

Figure-S1 Enders

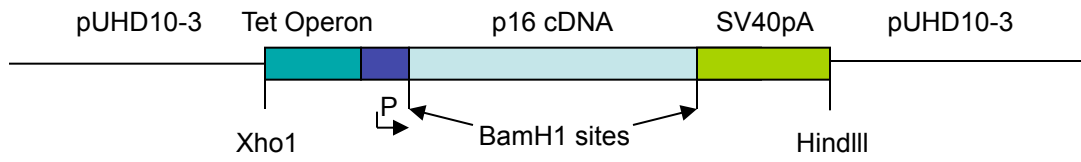
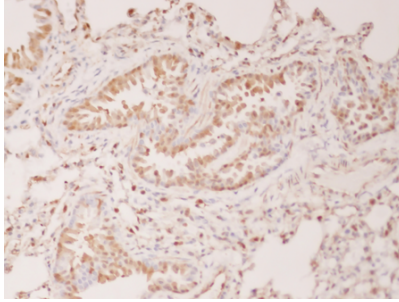
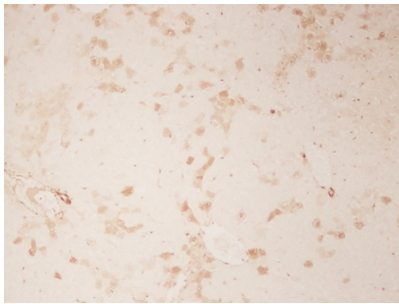


Figure-S2 Enders

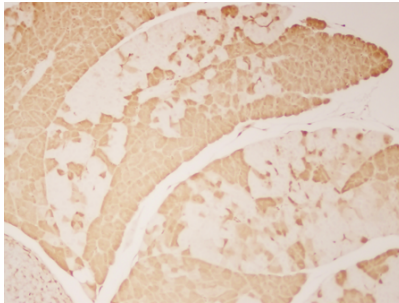
Lung



Liver



Pancreas



Kidney

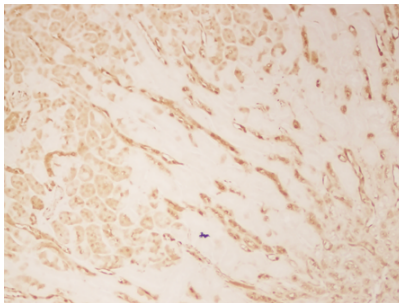


Figure-S3 Enders

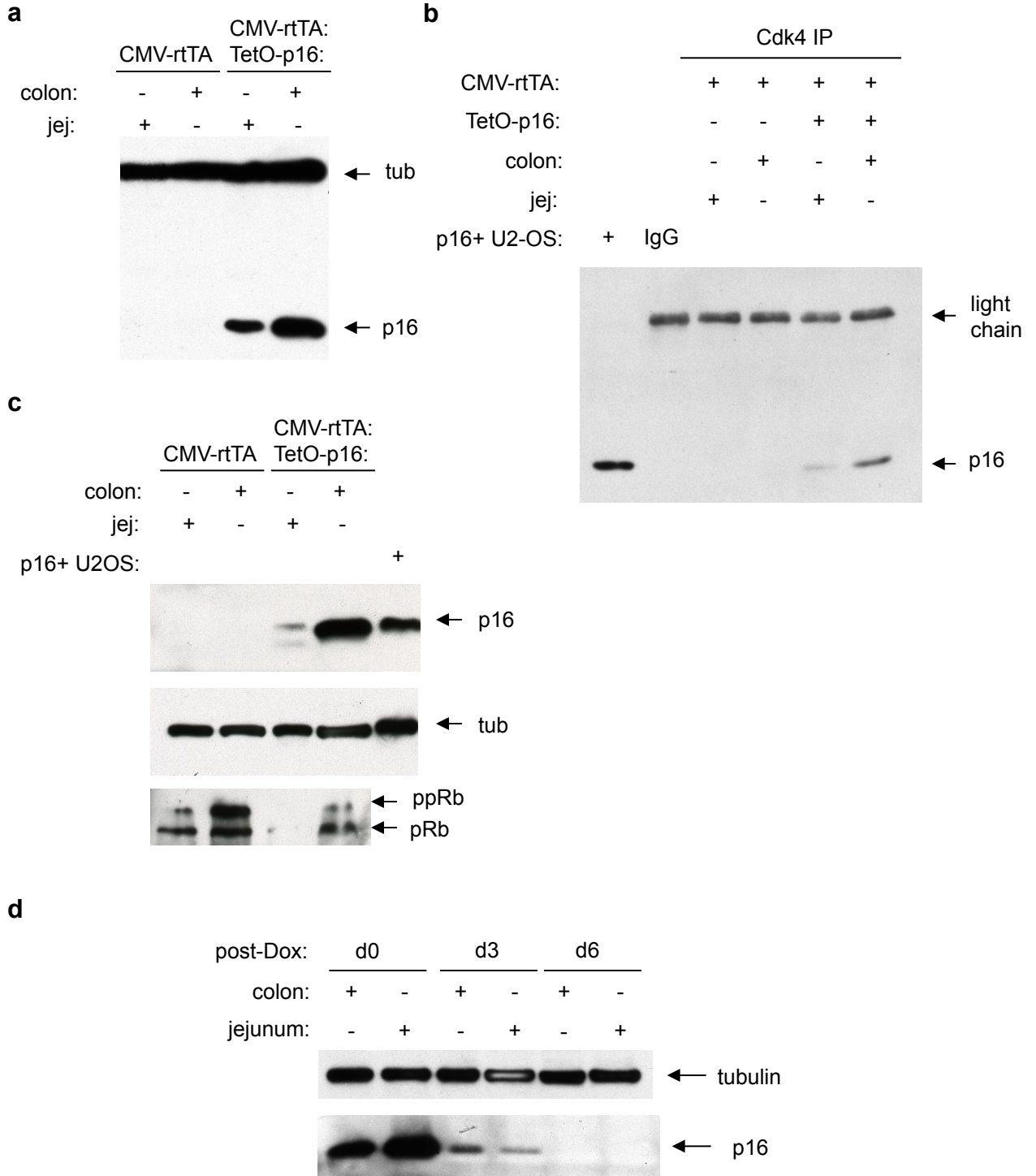


Figure-S4 Enders

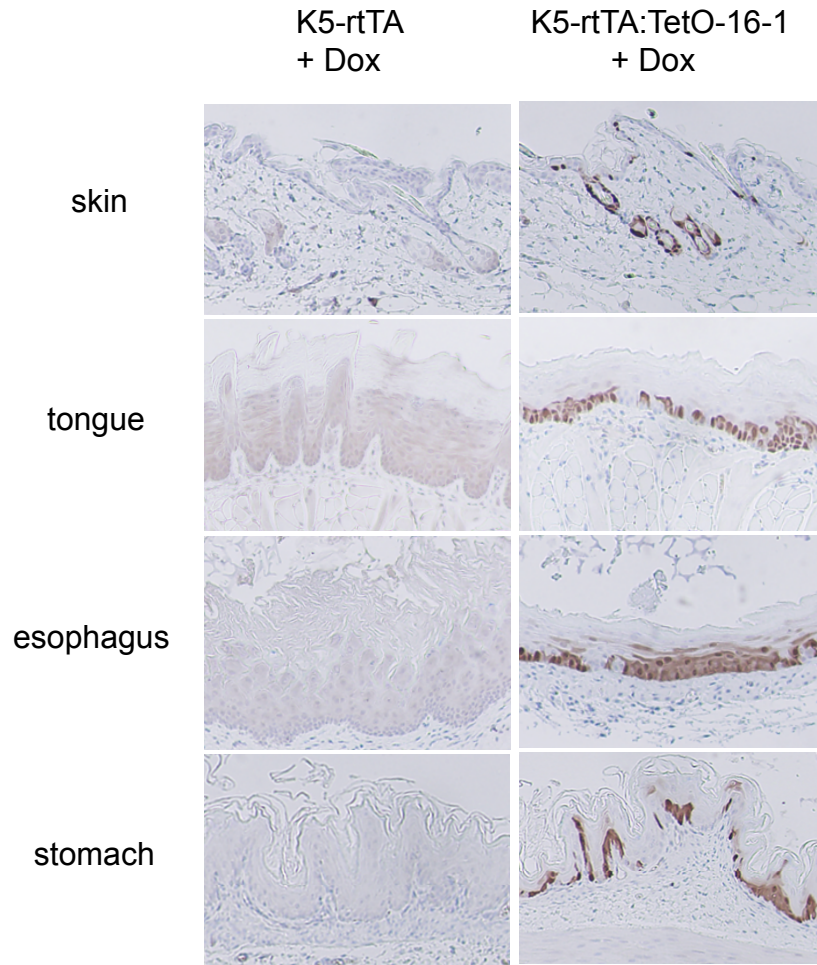


Figure-S5 Enders

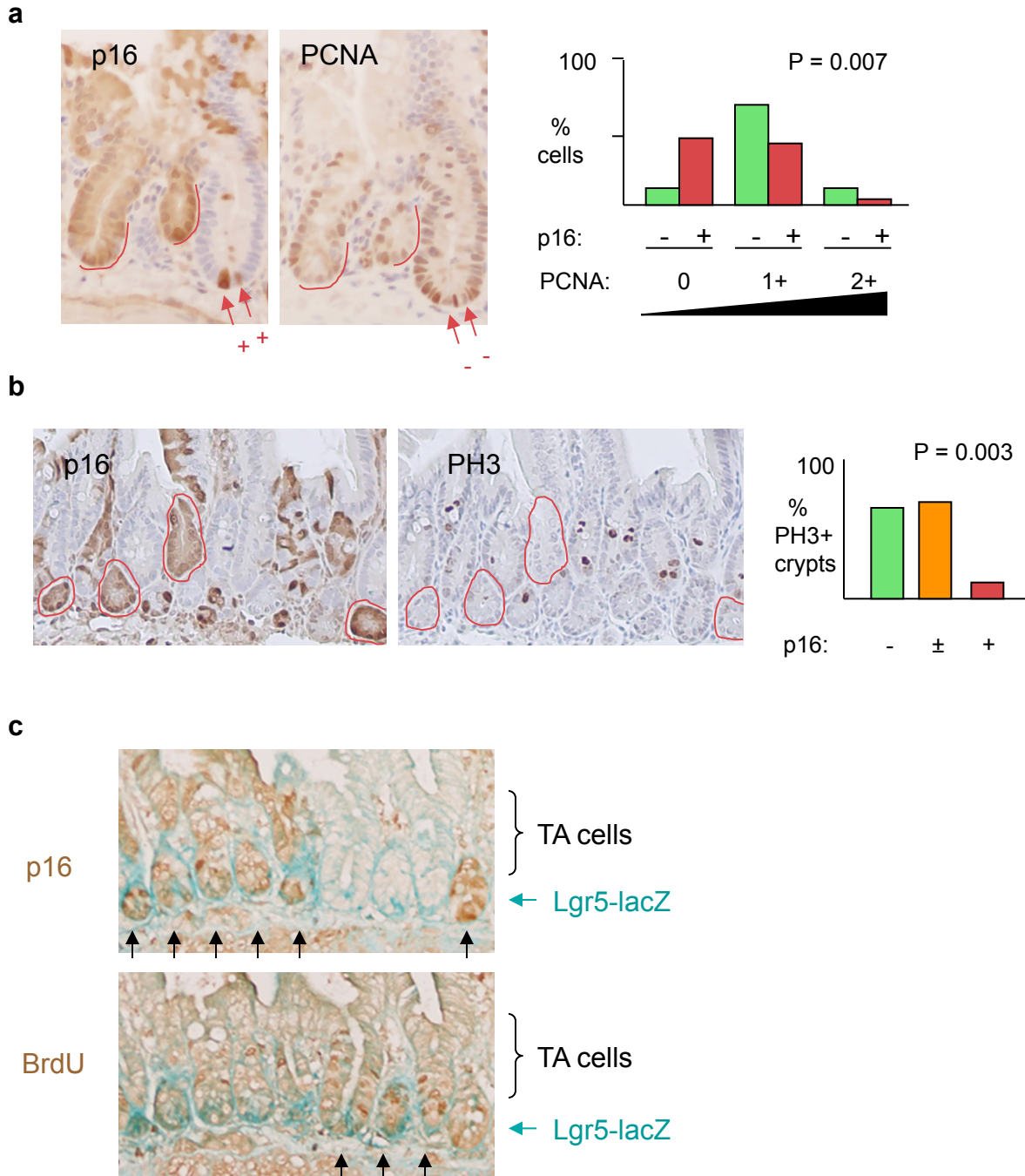
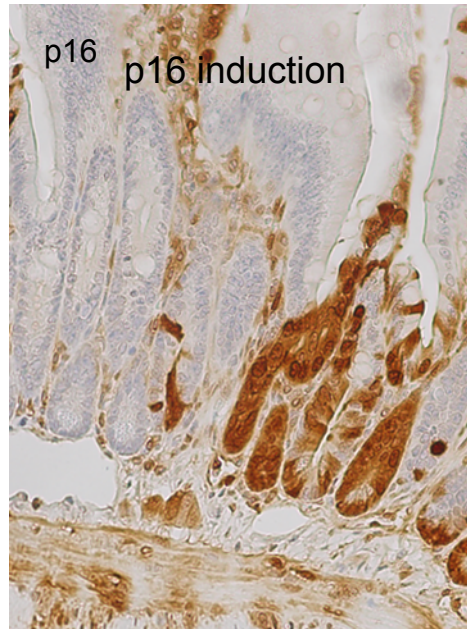
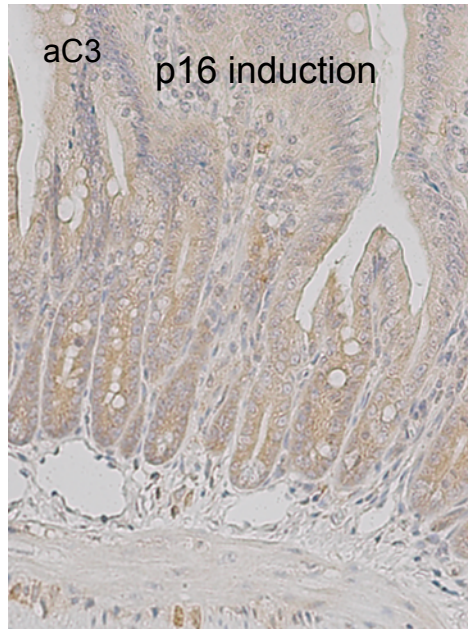
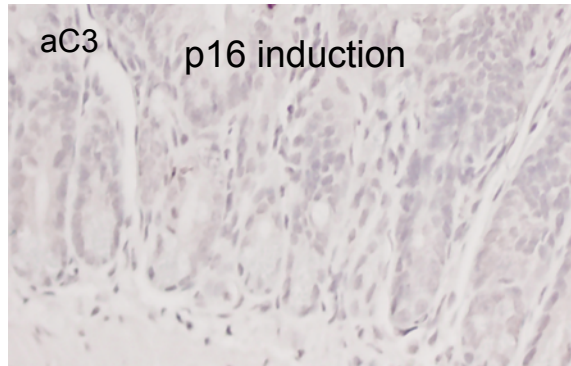
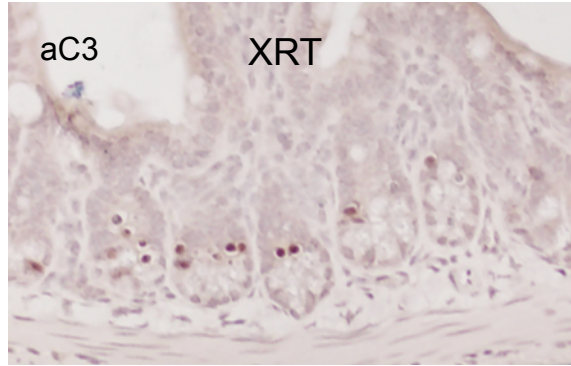


Figure-S6 Enders



Serial sections:

Figure-S7 Enders

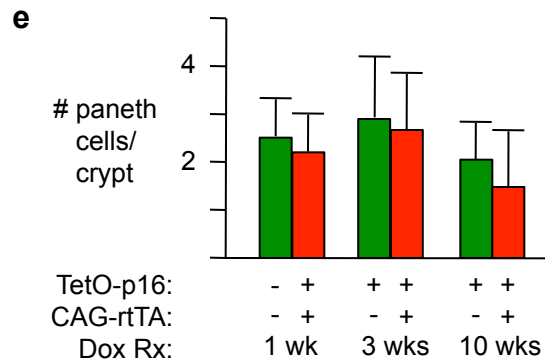
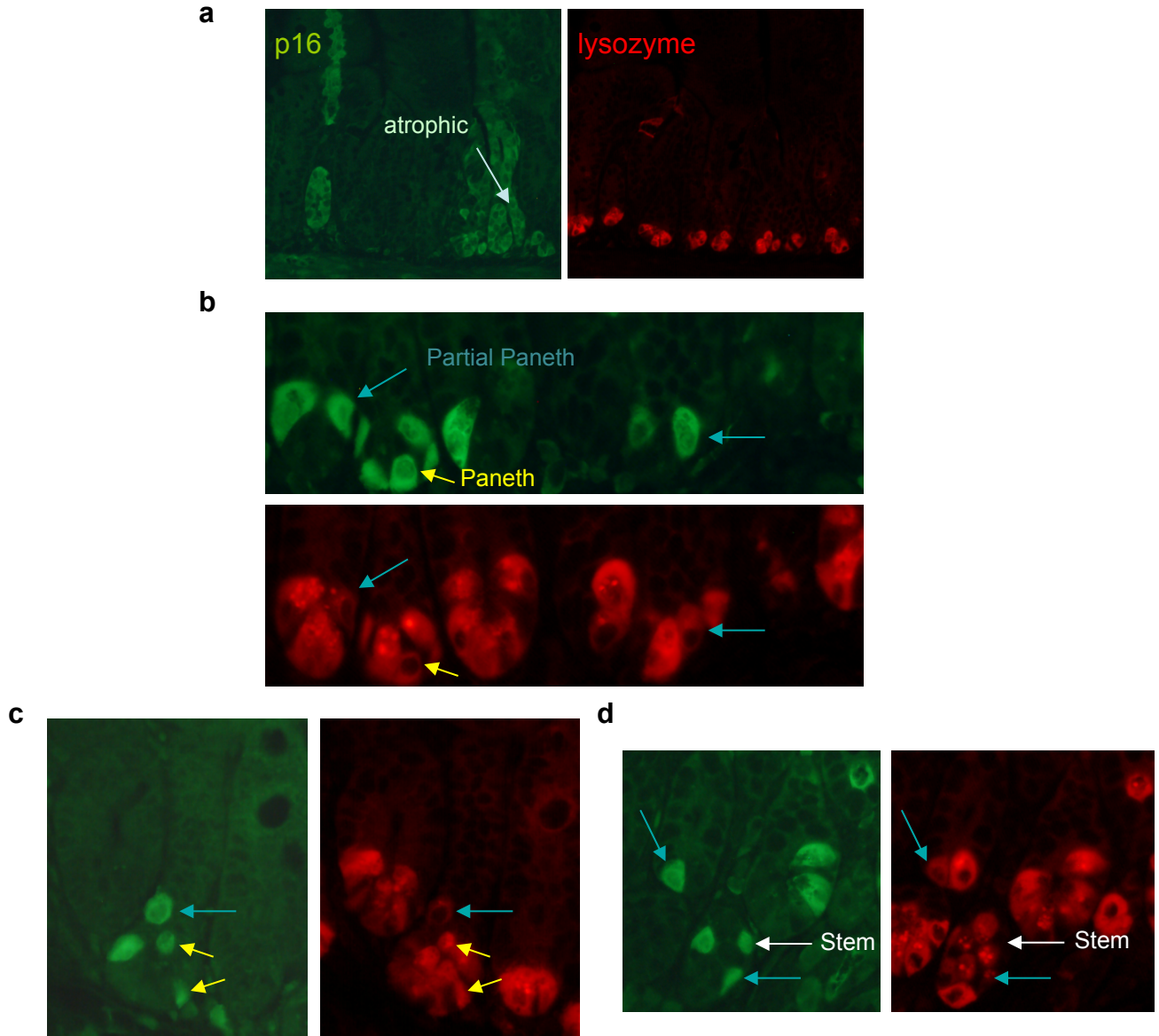
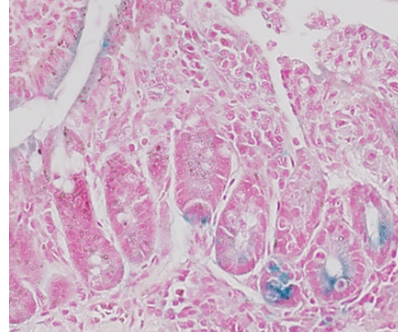
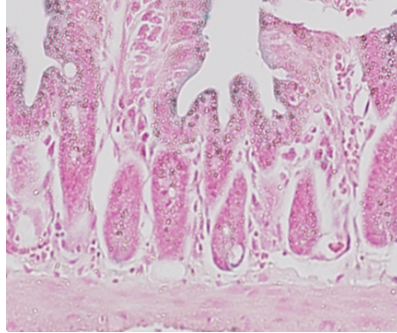


Figure-S8 Enders

CAGrtTA3:
TetOp16



DBZ Rx

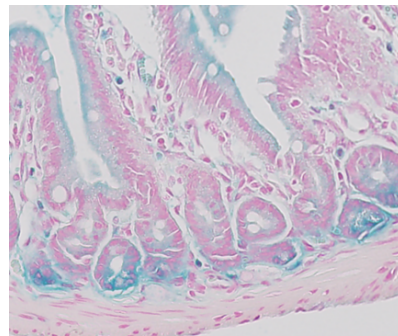
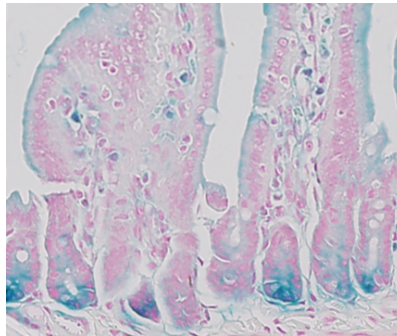


Figure-S9 Enders

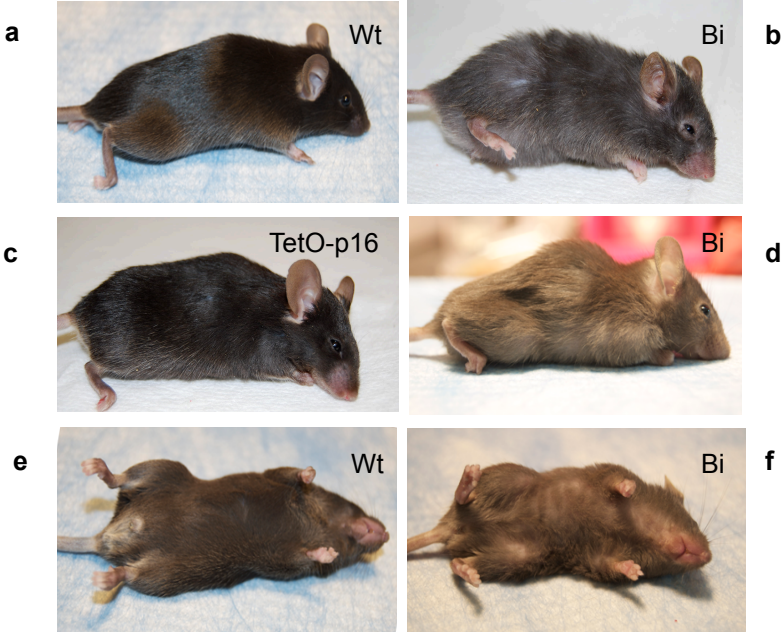


Figure-S10 Enders

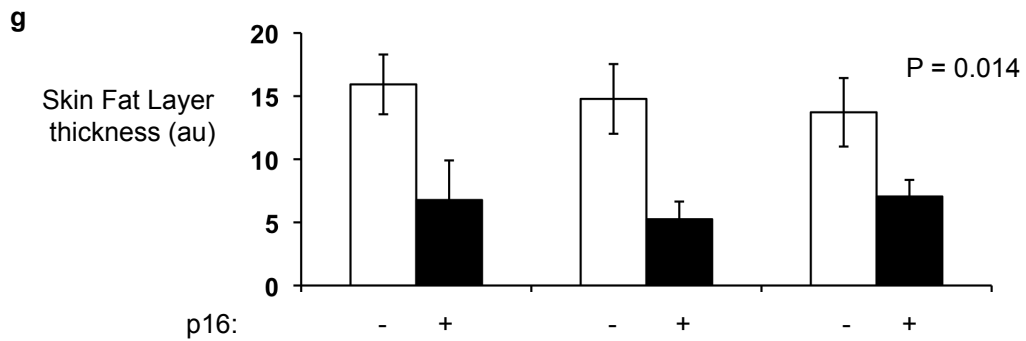
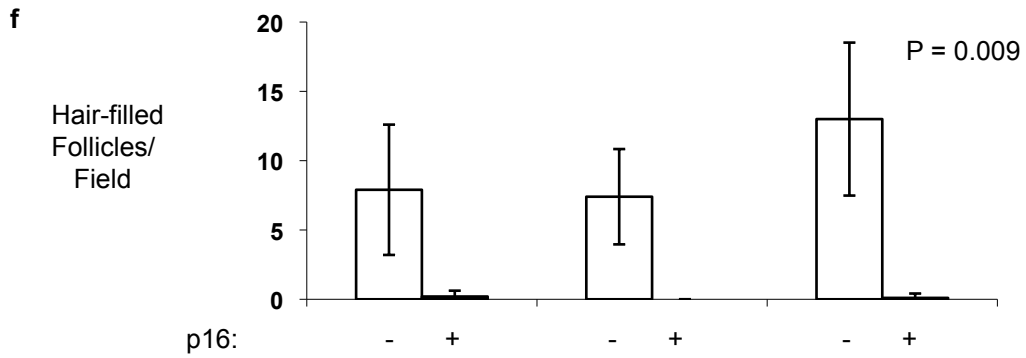
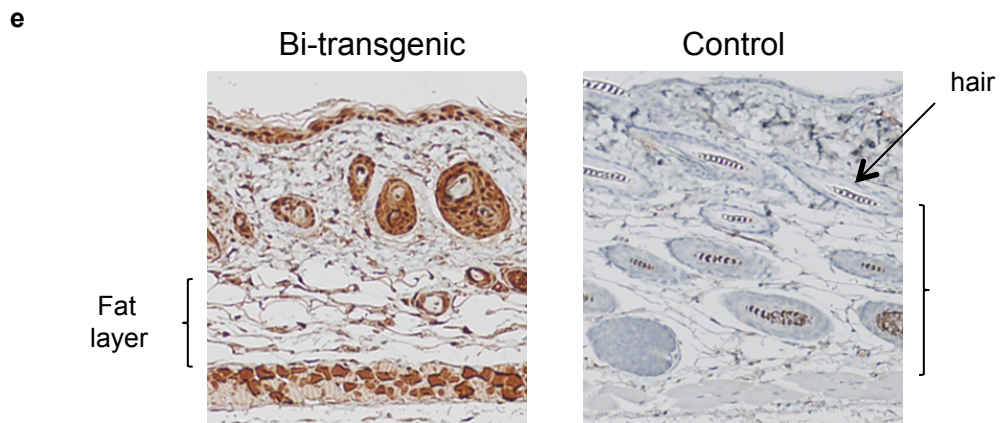
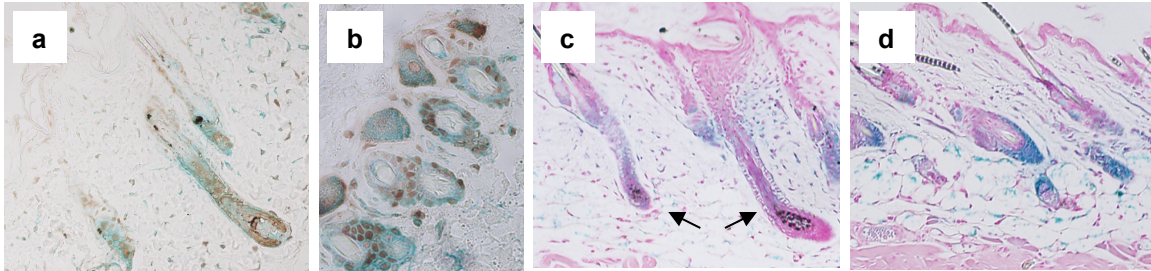


Figure-S11 Enders

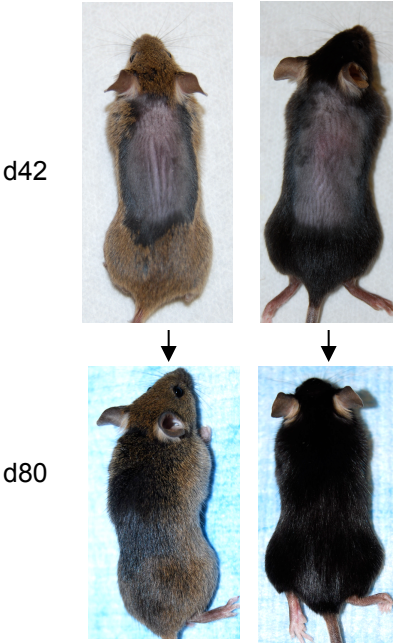


Figure-S12 Enders

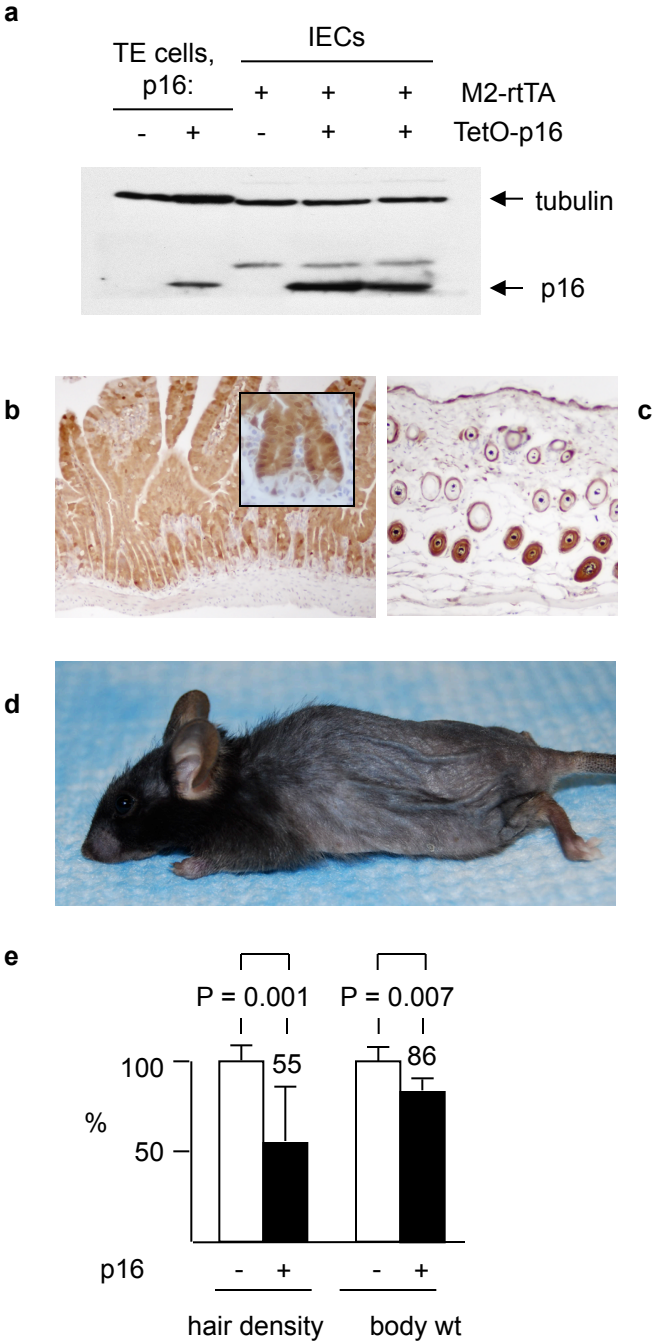


Figure-S13 Enders

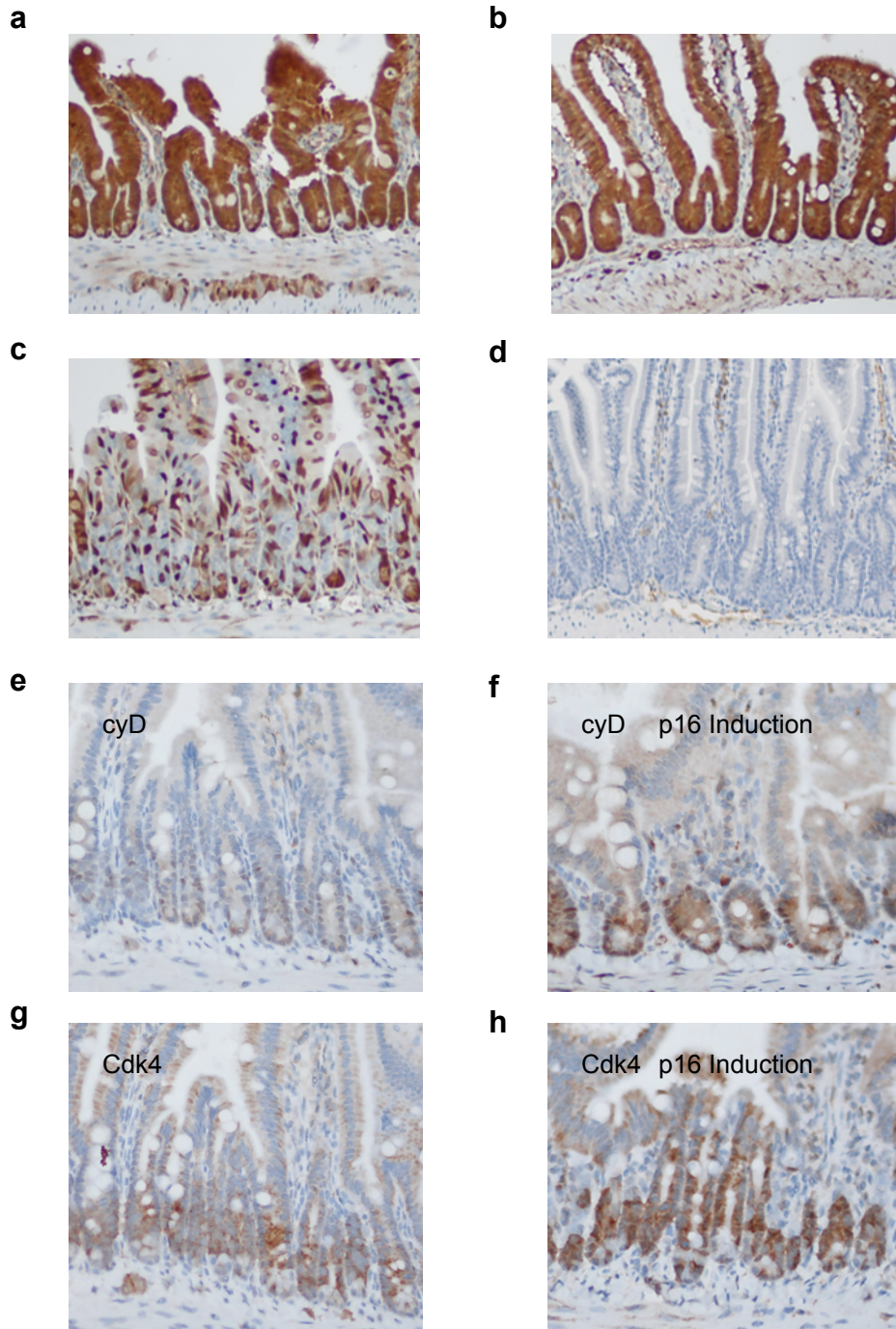


Figure-S14 Enders

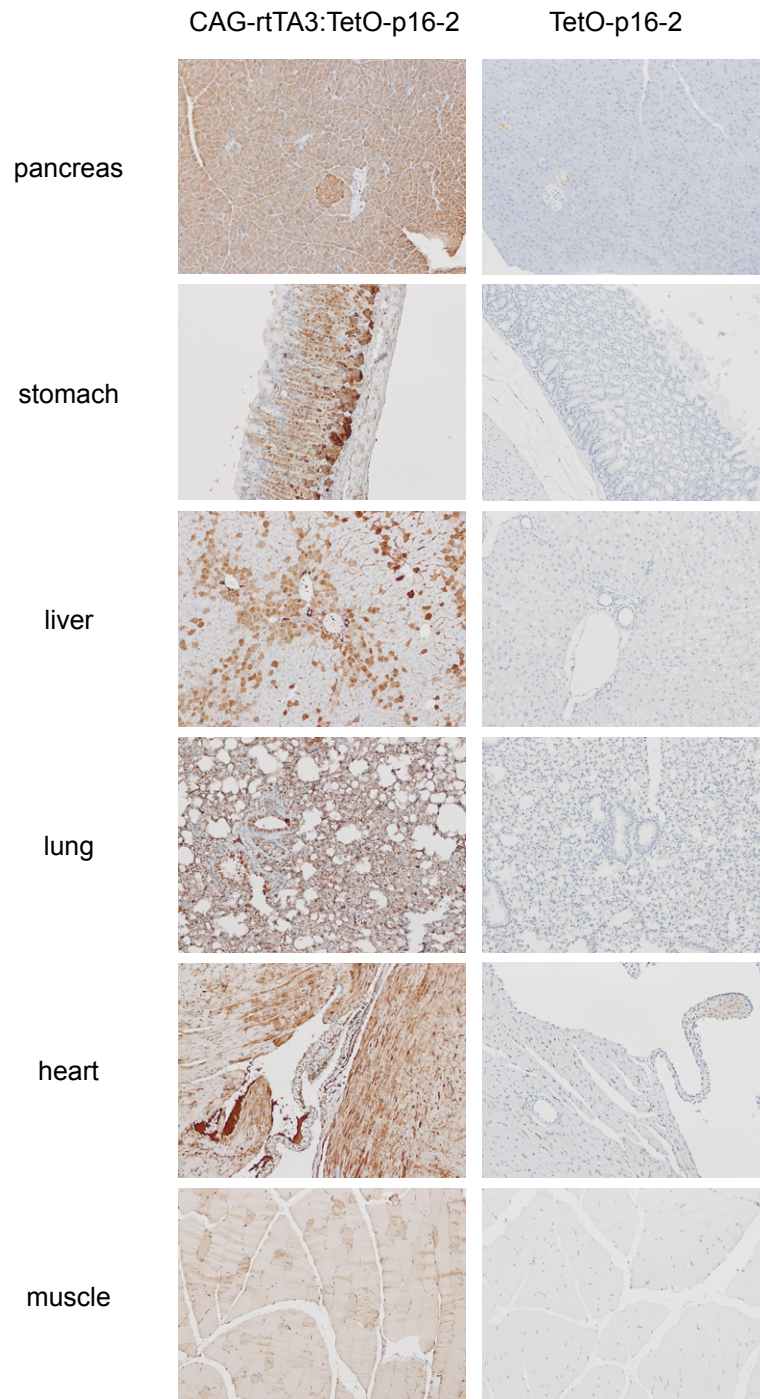


Figure-S15 Enders

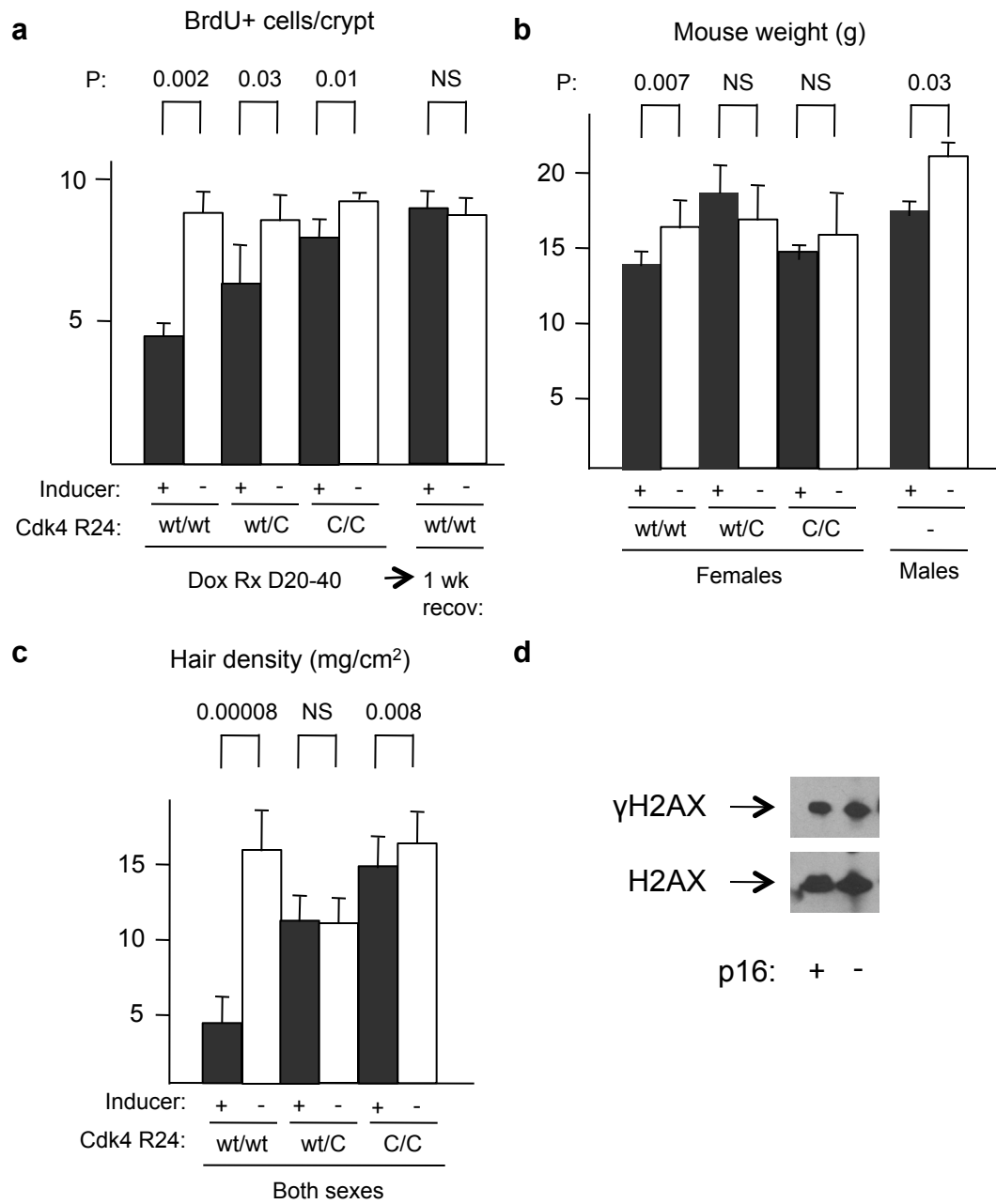


Figure-S16 Enders

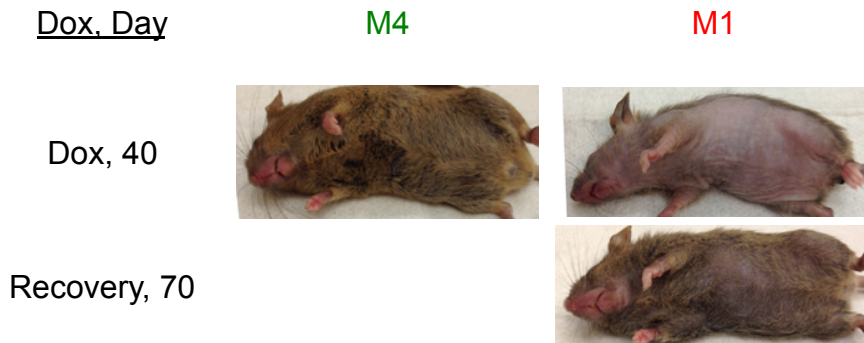
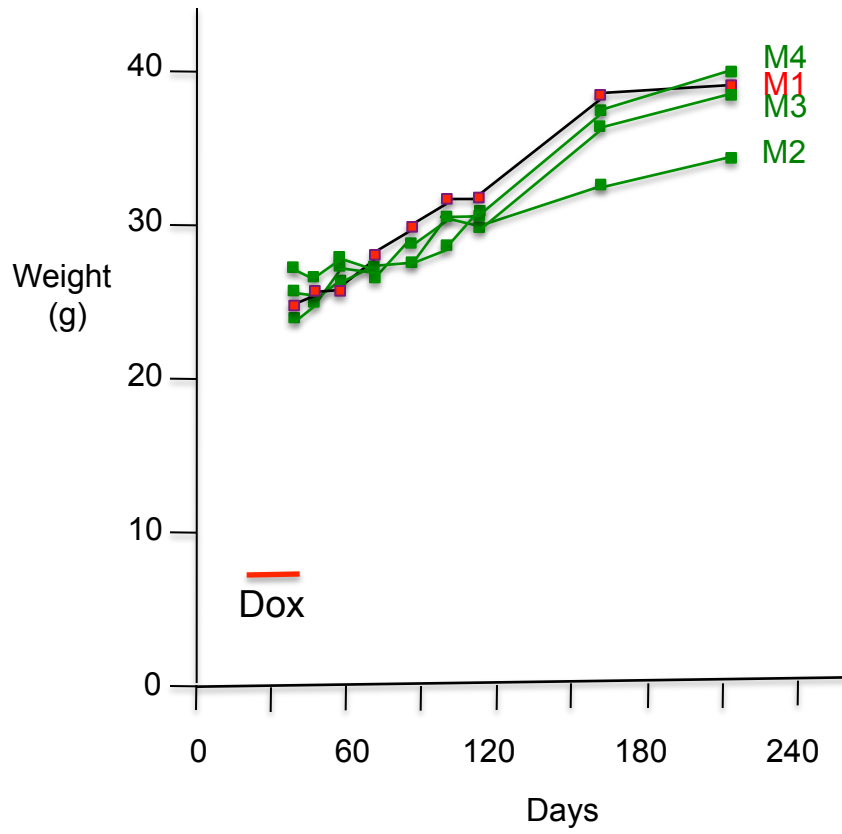
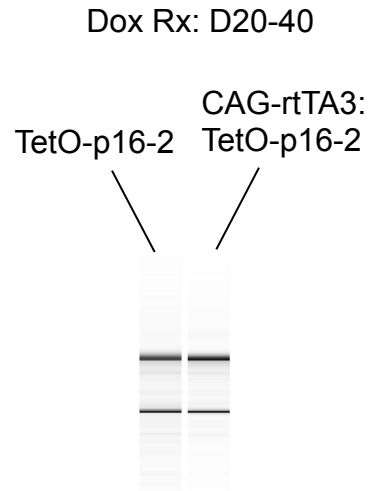


Figure S17-Enders



Gene	TetO-p16	CAG-rtTA3:TetO-p16
CCND2	9.65	11.55
Cdk4	7.6	8.6
GM-CSF	5.31	5.35
Gro-a/CXCI1	4.8	4.98
Gro-b/CXCL-2	5.44	5.2
Gro-c/CXCL-3	4.08	2.88
ICAM1	6.22	5.88
HCP-1/CCL-2	4.82	4.79
HCP-2/CCL-8	4	3.98
HCP-3/CCL-7	5.89	5.5
HCP-4	6.86	6.77
DcR2/Tnfrsf10b	7.88	7.96
PAI-1/SERPINE-1	5.59	5.26
IL-8	4.61	4.45
IL-6	2.62	2.92
OPG	5.58	5.77

Log2 scale