

Figure S1.

Normal BM (CD45-1+2 mix):

Leukemia:

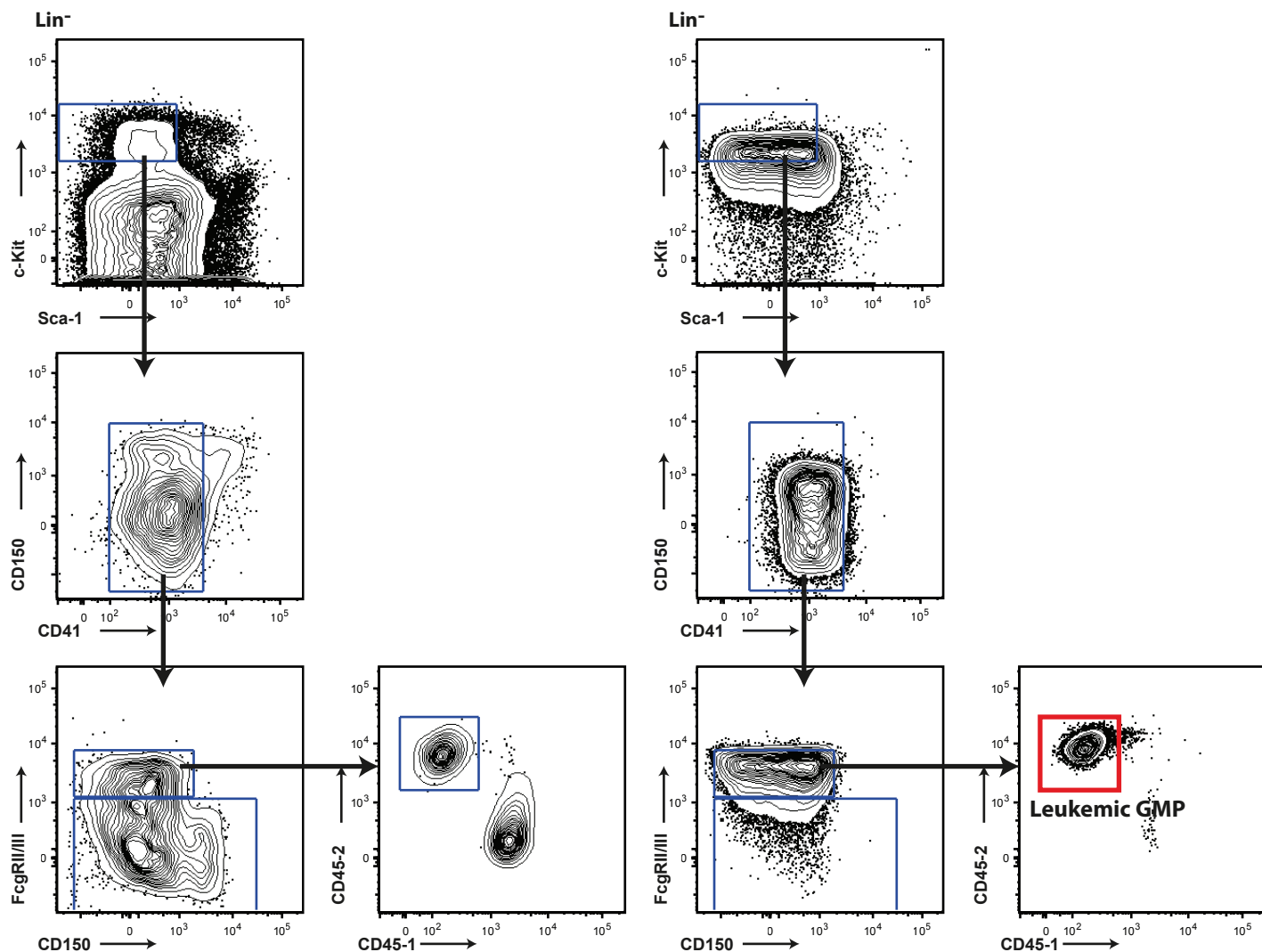


Figure S1 Schematic representation of fluorescence activated cell sorting strategy. Leukemic GMPs (right hand panels, red squares) were isolated using gates defined from normal BM populations (left hand panels, blue squares) as shown, and used for CHIP-seq experiments. Details on phenotypic markers used can be found in Materials and methods.