

Figure S2.

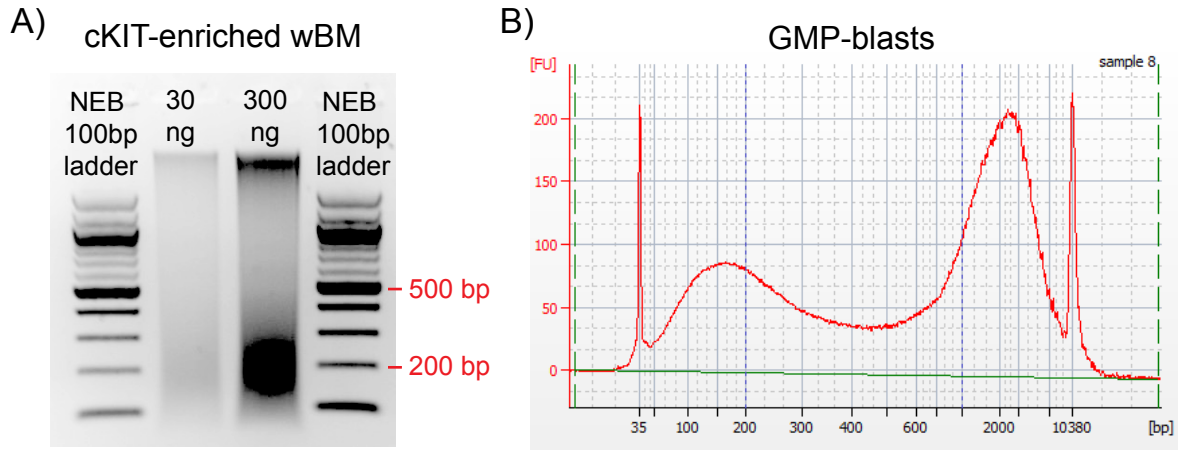


Figure S2 Validation of sonicated input chromatin. (A) Purified DNA from c-KIT enriched whole bone marrow (wBM) cells, prepared in parallel with FACS-isolated populations, subjected to standard agarose electrophoresis. (B) Purified DNA aliquot from isolated GMP-blast population chromatin assessed by Agilent Bioanalyzer High Sensitivity assay.