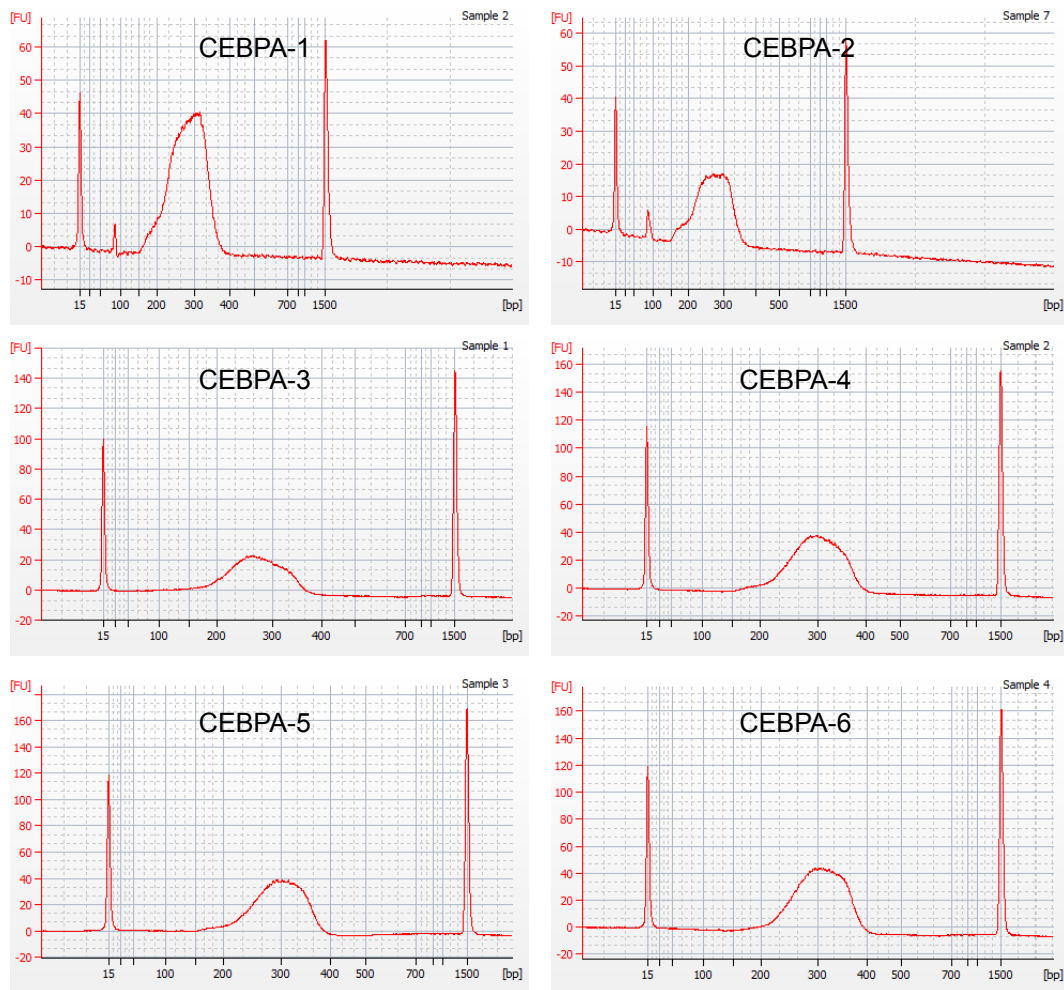


Figure S5.



**Figure S5 Size distributions of amplified ChIP-DNA libraries.** 1/2 dilutions of CEBPA-1 and -2 libraries (two upper panels) and 1/5 dilutions of CEBPA-3 through -6 libraries (four lower panels) inspected by the Agilent Bioanalyzer DNA 1000 assay .