

Figure S6.

GMP-blasts

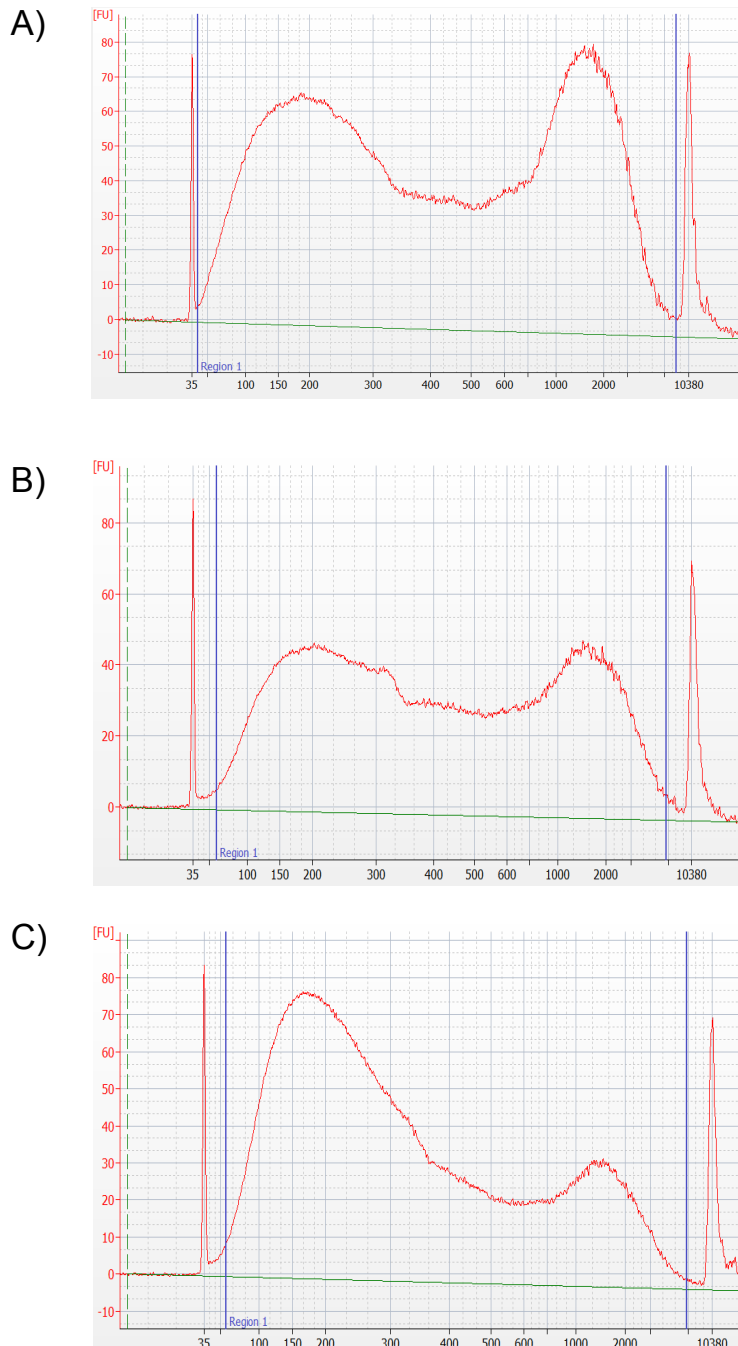


Figure S6 Validation of sonicated input chromatin size distribution from limited cell numbers. (A) 10,000 cells (B) 50,000 cells. (C) 125,000 cells. All sonicated in 0.5 ml siliconized tubes with 0.5 ml tube adaptor and resulting isolated DNA sizes inspected by the Agilent Bioanalyzer DNA high sensitivity assay (all diluted to ca. 2 ng/ μ l).