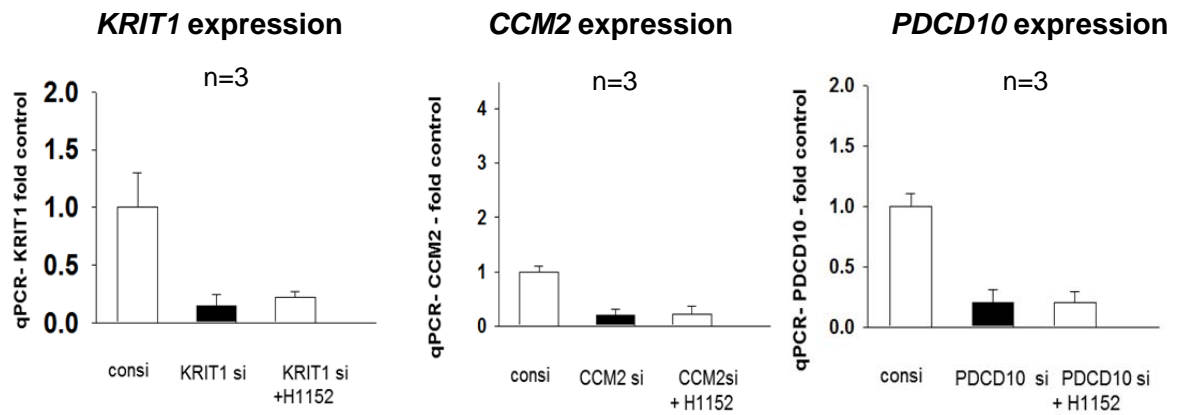


**Figure S1. The effect of knockdown of CCM genes and ROCK inhibitor H1152 in human brain microvascular endothelial cells.** (A) *KRIT1* (left), *CCM2* (center) and *PDCD10* (right) expression is reduced by *KRIT1* (left), *CCM2* (center) and *PDCD10* (right) siRNA treatment, respectively, as compared to control siRNA treatment (consi), with no effect by additional treatment with ROCK inhibitor H1152 on the reduced expression. Increased f-actin stress fibers by (B) *KRIT1*, (C) *CCM2* or (D) *PDCD10* depletion are blunted by H-1152. Bar, 100  $\mu$ m.

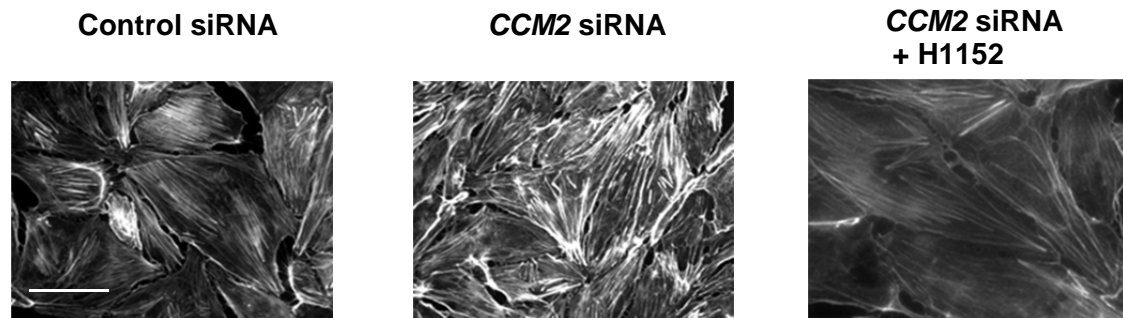
**A.**



**B.**



**C.**



**D.**

