

Supporting Information

Mastaitis et al. 10.1073/pnas.1424968112

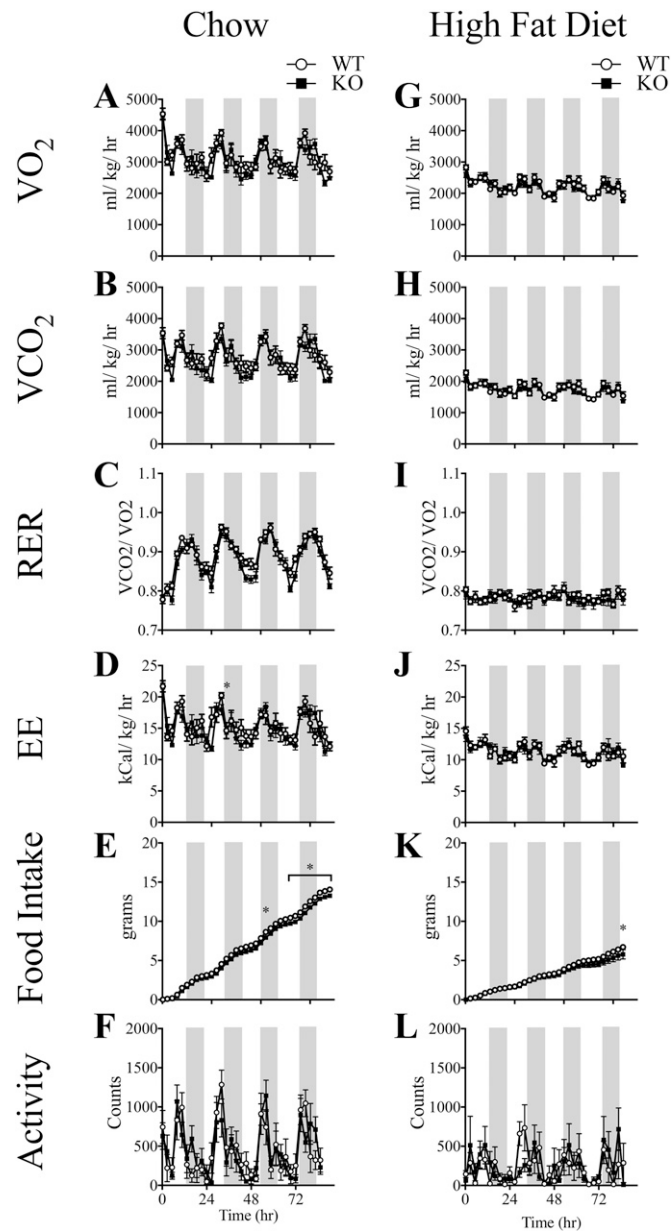


Fig. S1. Additional metabolic parameters of wild-type (WT) and *Gpr17*^{-/-} (KO) mice. Data are presented as continuous measurements over 96 h and average values during the light and dark phases of the light cycles for VO₂ (chow, A; HFD, G), VCO₂ (chow, B; HFD, H), respiratory quotient (RER) (chow, C; HFD, I), energy expenditure (EE) (chow, D; HFD, J), locomotor activity (activity) (chow, E; HFD, K), and food intake (chow, F; HFD, L). All groups had eight animals. Values are mean ± SEM. *P < 0.05.

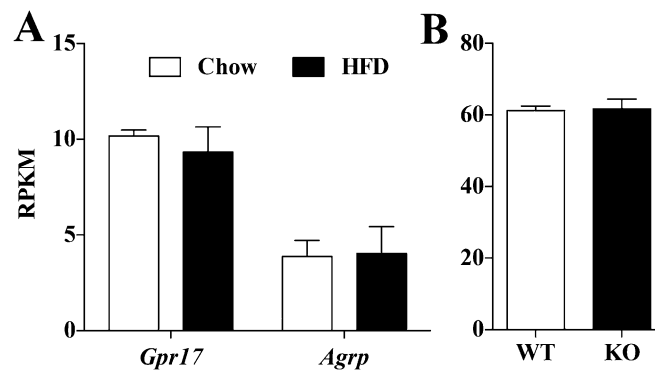


Fig. S2. *Gpr17* and *Agrp* mRNA and AGRP plasma levels in *Gpr17*^{-/-} and wild-type mice. (A) Hypothalamic *Gpr17* and *Agrp* mRNA levels in wild-type mice on chow or high-fat diet (HFD) for 9 wk. (B) AGRP plasma levels in fasted (4 h) *Gpr17*^{-/-} (KO) and wild-type (WT) mice on a high-fat diet for 9 wk. All groups had seven animals. Values are mean \pm SEM.