

SUPPLEMENTARY DATA

Fig. S1. Maximum likelihood tree based on the two chloroplast markers (*atpB-rbcL* spacer and *rpL32-trnL* spacer) and 42 accessions of *Sarcocornia* (Sa.) and *Salicornia* (Sl.). The tree was rooted with *Arthrocnemum* (= Ar.), other abbreviations Mi. = *Microcnemum*, Te. = *Tecticornia*. Numbers above branches are ML and parsimony bootstrap values, respectively. Numbers at the end of each taxon name refer to the lab code.

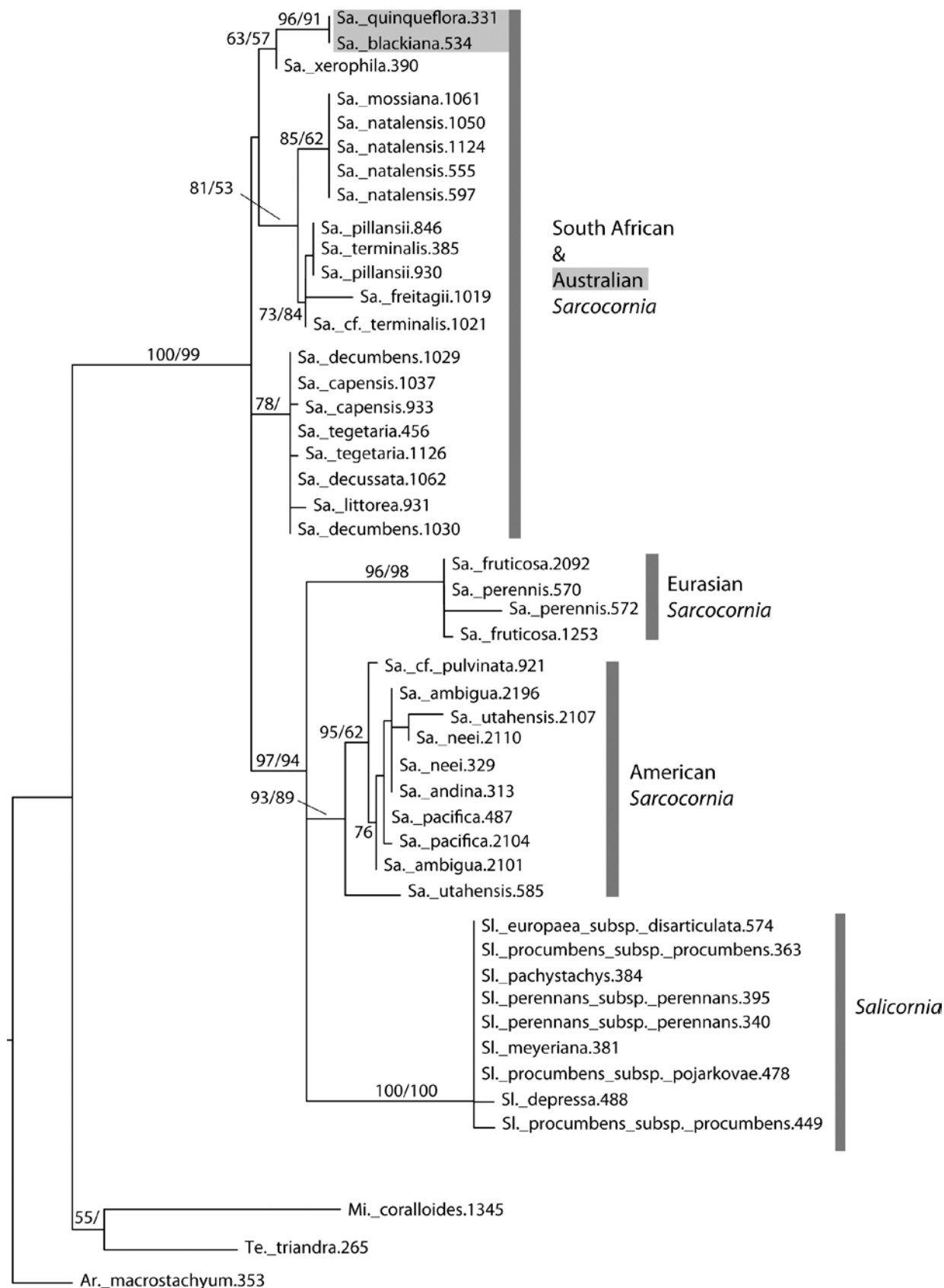


Fig. S2. Distribution of American accessions of *Sarcocornia* included in the phylogenetic analysis. Color coding: *S. ambigua* clade = green, *S. utahensis* clade = red, *S. andina* clade = yellow, *S. pacifica*/*S. neei*/*S. pulvinata*/*S. magellanica* clade = blue.



[Table S1 is supplied as a separate Excel file, and gives species and accessions included in the molecular analysis.]