

# Single Mass Analysis

Tolerance = 10.0 PPM / DBE: min = -1.5, max = 50.0

Element prediction: Off

Number of isotope peaks used for i-FIT = 3

Monoisotopic Mass, Even Electron Ions

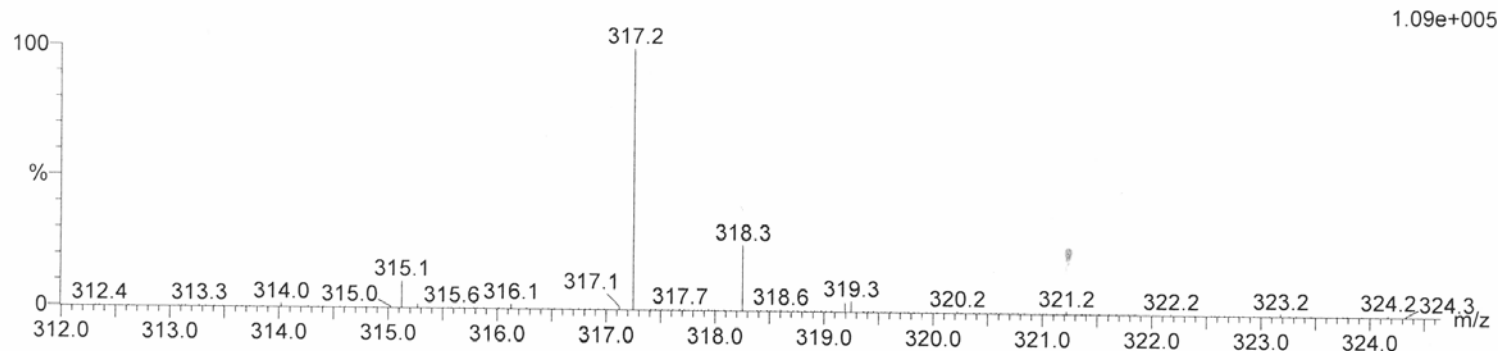
682 formula(e) evaluated with 4 results within limits (all results (up to 1000) for each mass)

Elements Used:

C: 0-100 H: 0-100 N: 0-20 O: 0-20

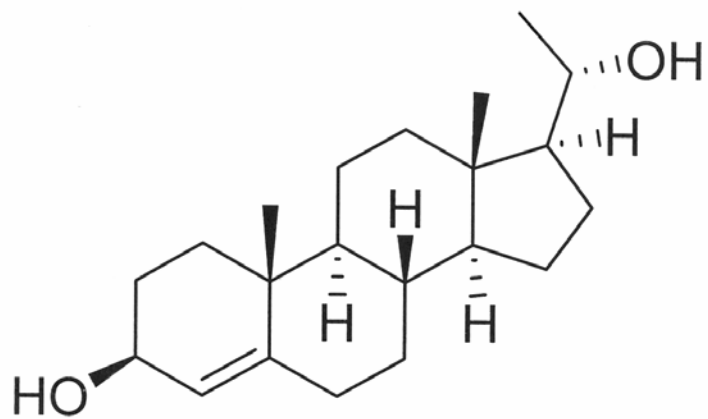
JC\_Sl-P4 3beta 20alpha 10 (0.461) Cm (7:11-27:31)

1: TOF MS ES+



Minimum: -1.5  
Maximum: 5.0 10.0 50.0

| Mass     | Calc. Mass | mDa  | PPM  | DBE  | i-FIT | i-FIT (Norm) | Formula       |
|----------|------------|------|------|------|-------|--------------|---------------|
| 317.2484 | 317.2481   | 0.3  | 0.9  | 5.5  | 436.8 | 0.0          | C21 H33 O2    |
|          | 317.2454   | 3.0  | 9.5  | 6.5  | 440.4 | 3.6          | C17 H29 N6    |
|          | 317.2486   | -0.2 | -0.6 | -1.5 | 444.8 | 8.0          | C6 H29 N12 O3 |
|          | 317.2459   | 2.5  | 7.9  | -0.5 | 446.9 | 10.1         | C2 H25 N18 O  |



3β,20α-P4