

Sample Name: peak 1

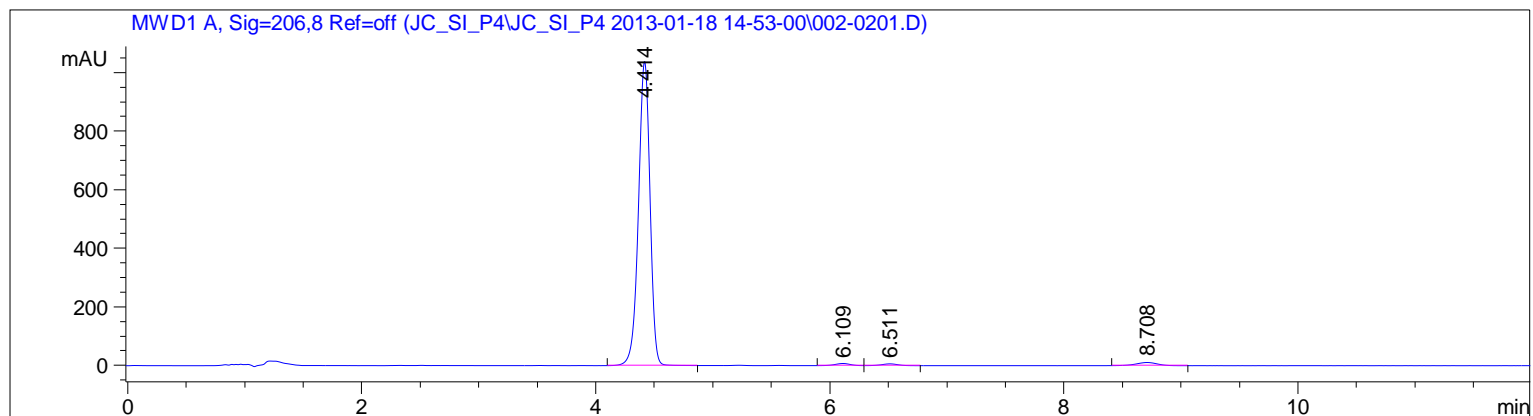
```

=====
Acq. Operator   : Jozko                               Seq. Line :    2
Acq. Instrument : HPLC                               Location  : Vial 2
Injection Date  : 1/18/2013 3:08:56 PM              Inj       :    1
                                                    Inj Volume: 10 µl

Acq. Method     : C:\Chem32\1\DATA\JC_SI_P4\JC_SI_P4 2013-01-18 14-53-00\JC_SI_P4_MECN.M
Last changed    : 1/17/2013 6:29:42 PM by Jozko
Analysis Method  : C:\CHEM32\1\DATA\JC_SI_P4\JC_SI_P4 2013-01-18 14-53-00\002-0201.D\DA.M (JC_
SI_P4_MECN.M)
Last changed    : 1/17/2013 6:29:42 PM by Jozko
Method Info     : Analiza derivatov po redukciji progesterona
                  Voda / MeCN = 45 /55
                  Kolona: Agilent Eclipse Plus C16 150 x 4.6 mm, 5 µm
                  pretok 1.2 ml/min, 25 °C, V = 10 µl, 206 nm + 240 nm, 12 min

```

Sample Info : P4-3beta, 20alpha



```

=====
                          Area Percent Report
=====

```

```

Sorted By           :      Signal
Multiplier          :      1.0000
Dilution            :      1.0000
Do not use Multiplier & Dilution Factor with ISTDs

```

Signal 1: MWD1 A, Sig=206,8 Ref=off

Peak #	RetTime [min]	Type	Width [min]	Area [mAU*s]	Height [mAU]	Area %
1	4.414	BB	0.1060	7115.73145	1038.00623	96.4377
2	6.109	BV	0.1421	66.88280	7.35368	0.9064
3	6.511	VB	0.1484	58.62856	6.08552	0.7946
4	8.708	BB	0.1980	137.33667	10.82822	1.8613

```
Totals :                      7378.57948 1062.27365
```

```

=====
*** End of Report ***

```