

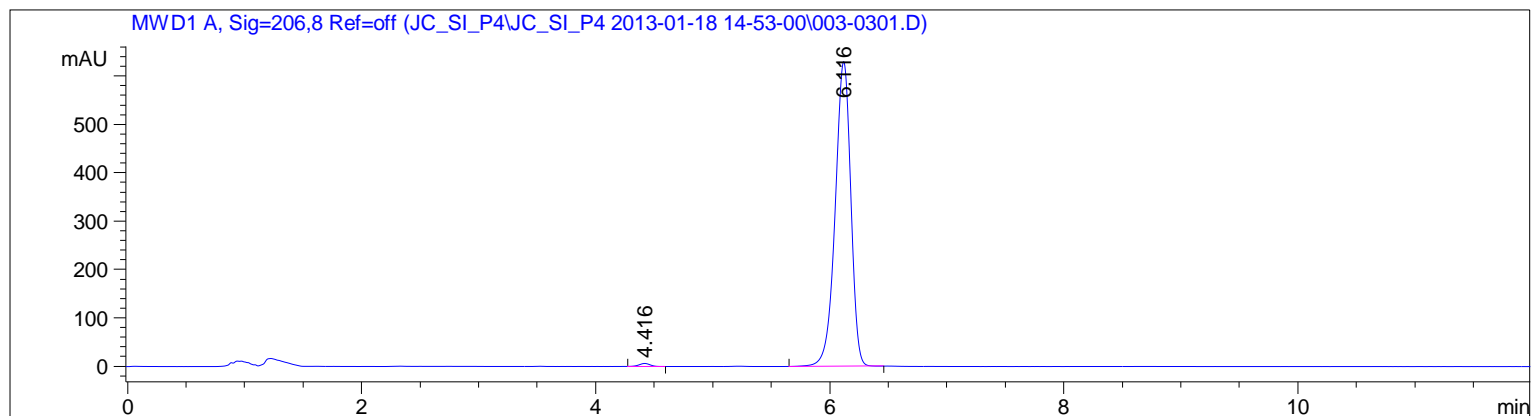
Sample Name: peak 2

```

=====
Acq. Operator   : Jozko                               Seq. Line :    3
Acq. Instrument : HPLC                               Location  : Vial 3
Injection Date  : 1/18/2013 3:23:01 PM                Inj       :    1
                                                    Inj Volume: 10 µl

Acq. Method     : C:\Chem32\1\DATA\JC_SI_P4\JC_SI_P4 2013-01-18 14-53-00\JC_SI_P4_MECN.M
Last changed    : 1/17/2013 6:29:42 PM by Jozko
Analysis Method : C:\CHEM32\1\DATA\JC_SI_P4\JC_SI_P4 2013-01-18 14-53-00\003-0301.D\DA.M (JC_
SI_P4_MECN.M)
Last changed    : 1/17/2013 6:29:42 PM by Jozko
Method Info     : Analiza derivatov po redukciji progesterona
                  Voda / MeCN = 45 /55
                  Kolona: Agilent Eclipse Plus C16 150 x 4.6 mm, 5 µm
                  pretok 1.2 ml/min, 25 °C, V = 10 µl, 206 nm + 240 nm, 12 min
    
```

Sample Info : P4-3alpha, 20alpha



Area Percent Report

```

Sorted By      :      Signal
Multiplier     :      1.0000
Dilution       :      1.0000
Do not use Multiplier & Dilution Factor with ISTDs
    
```

Signal 1: MWD1 A, Sig=206,8 Ref=off

Peak #	RetTime [min]	Type	Width [min]	Area [mAU*s]	Height [mAU]	Area %
1	4.416	BB	0.1013	41.42162	6.24817	0.7030
2	6.116	BB	0.1444	5850.99707	629.91925	99.2970

Totals : 5892.41869 636.16742

*** End of Report ***