

# Single Mass Analysis

Tolerance = 10.0 PPM / DBE: min = -1.5, max = 50.0

Element prediction: Off

Number of isotope peaks used for i-FIT = 3

Monoisotopic Mass, Even Electron Ions

682 formula(e) evaluated with 4 results within limits (all results (up to 1000) for each mass)

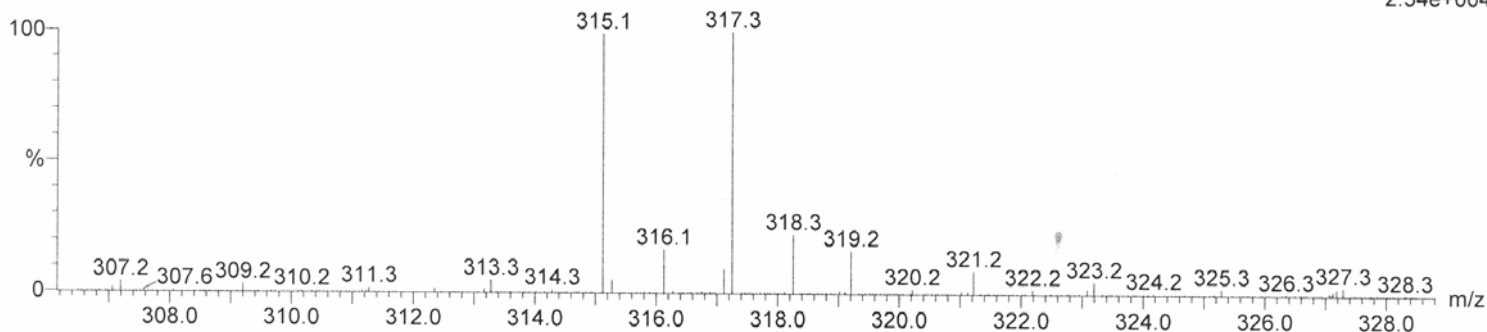
Elements Used:

C: 0-100 H: 0-100 N: 0-20 O: 0-20

JC\_SI-P4 3beta 20beta 25 (1.161) Cm (22:27)

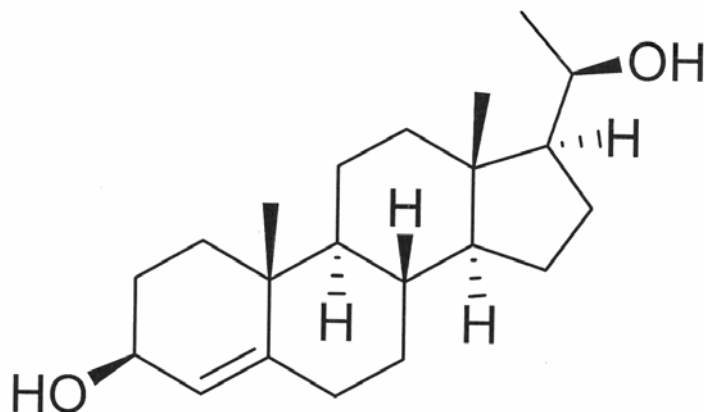
1: TOF MS ES+

2.34e+004



Minimum: -1.5  
Maximum: 5.0 10.0 50.0

Mass	Calc. Mass	mDa	PPM	DBE	i-FIT	i-FIT (Norm)	Formula
317.2485	317.2481	0.4	1.3	5.5	302.7	0.9	C21 H33 O2
	317.2454	3.1	9.8	6.5	302.9	1.1	C17 H29 N6
	317.2486	-0.1	-0.3	-1.5	303.6	1.9	C6 H29 N12 O3
	317.2459	2.6	8.2	-0.5	303.8	2.0	C2 H25 N18 O



3β,20β-P4