

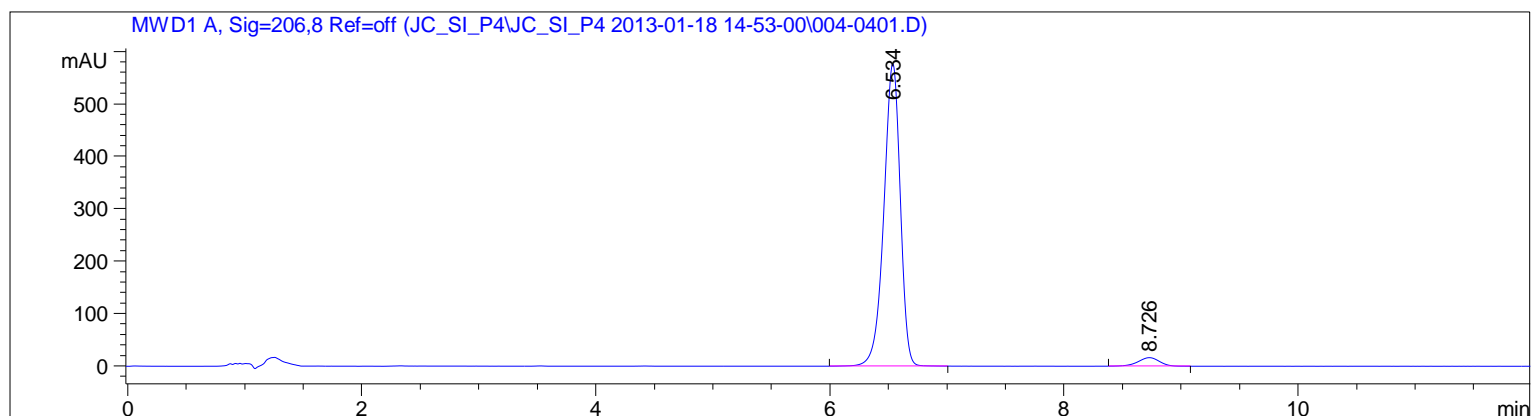
Sample Name: peak 3

```

=====
Acq. Operator   : Jozko                               Seq. Line :    4
Acq. Instrument : HPLC                               Location  : Vial 4
Injection Date  : 1/18/2013 3:37:08 PM                Inj       :    1
                                                    Inj Volume: 10 µl

Acq. Method     : C:\Chem32\1\DATA\JC_SI_P4\JC_SI_P4 2013-01-18 14-53-00\JC_SI_P4_MECN.M
Last changed    : 1/17/2013 6:29:42 PM by Jozko
Analysis Method : C:\CHEM32\1\DATA\JC_SI_P4\JC_SI_P4 2013-01-18 14-53-00\004-0401.D\DA.M (JC_
SI_P4_MECN.M)
Last changed    : 1/17/2013 6:29:42 PM by Jozko
Method Info     : Analiza derivatov po redukciji progesterona
                  Voda / MeCN = 45 /55
                  Kolona: Agilent Eclipse Plus C16 150 x 4.6 mm, 5 µm
                  pretok 1.2 ml/min, 25 °C, V = 10 µl, 206 nm + 240 nm, 12 min

Sample Info     : P4-3beta, 20beta
    
```



Area Percent Report

```

Sorted By      :      Signal
Multiplier     :      1.0000
Dilution       :      1.0000
Do not use Multiplier & Dilution Factor with ISTDs
    
```

Signal 1: MWD1 A, Sig=206,8 Ref=off

Peak #	RetTime [min]	Type	Width [min]	Area [mAU*s]	Height [mAU]	Area %
1	6.534	BB	0.1517	5622.65771	576.86383	96.4201
2	8.726	BB	0.2014	208.75832	16.30374	3.5799

Totals : 5831.41603 593.16757

*** End of Report ***