

Single Mass Analysis

Tolerance = 10.0 PPM / DBE: min = -1.5, max = 50.0

Element prediction: Off

Number of isotope peaks used for i-FIT = 3

Monoisotopic Mass, Even Electron Ions

682 formula(e) evaluated with 3 results within limits (all results (up to 1000) for each mass)

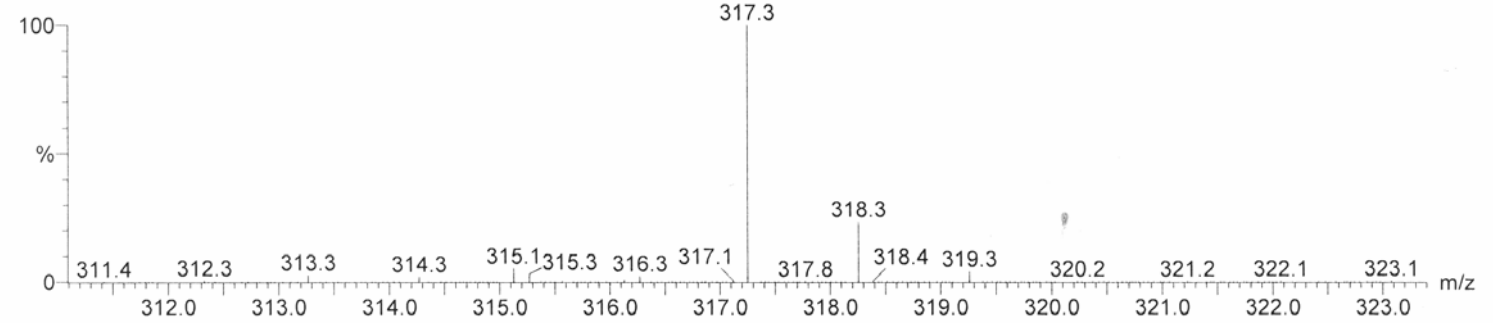
Elements Used:

C: 0-100 H: 0-100 N: 0-20 O: 0-20

JC_SI-P4 3 α 20 β 5 (0.240) Cm (2:12)

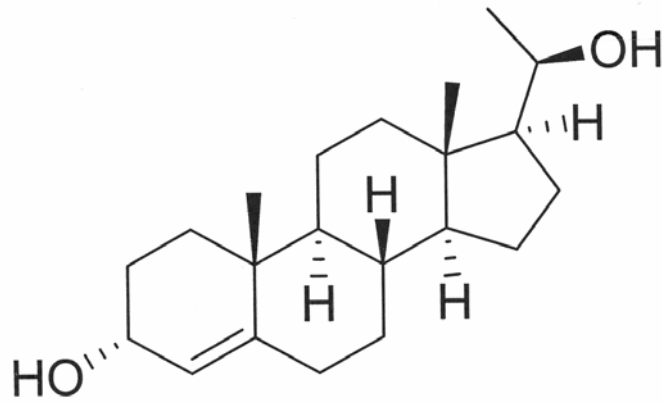
1: TOF MS ES+

1.82e+005



Minimum: -1.5
Maximum: 5.0 10.0 50.0

Mass	Calc. Mass	mDa	PPM	DBE	i-FIT	i-FIT (Norm)	Formula
317.2489	317.2481	0.9	2.8	5.5	390.4	0.0	C21 H33 O2
	317.2486	0.4	1.3	-1.5	400.4	10.1	C6 H29 N12 O3
	317.2459	3.1	9.8	-0.5	402.9	12.6	C2 H25 N18 O



3 α ,20 β -P4