

Sample Name: peak 4

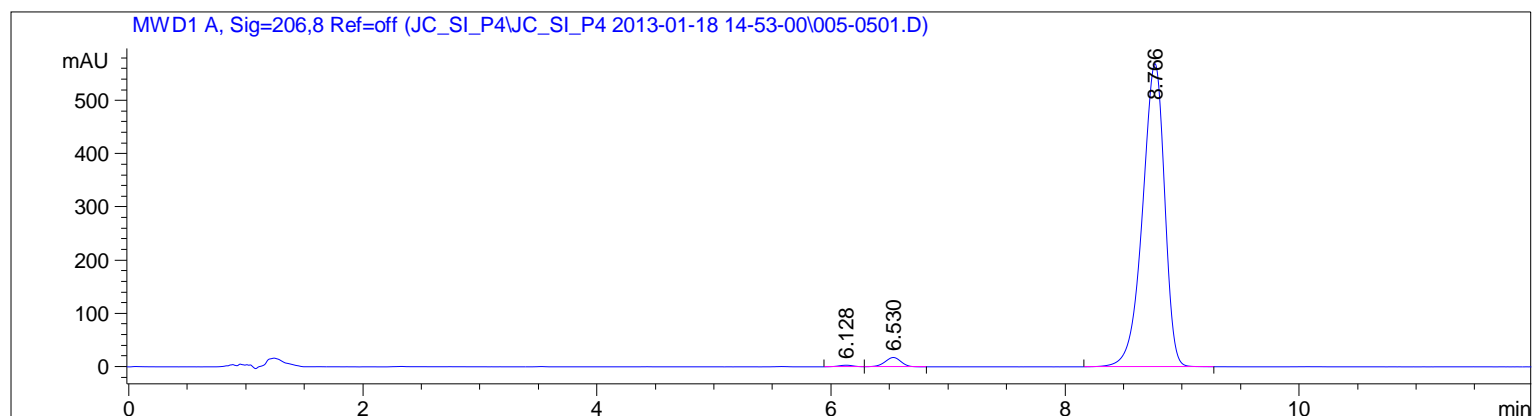
```

=====
Acq. Operator   : Jozko                               Seq. Line :    5
Acq. Instrument : HPLC                               Location  : Vial 5
Injection Date  : 1/18/2013 3:51:13 PM                Inj       :    1
                                                    Inj Volume: 10 µl

Acq. Method     : C:\Chem32\1\DATA\JC_SI_P4\JC_SI_P4 2013-01-18 14-53-00\JC_SI_P4_MECN.M
Last changed    : 1/17/2013 6:29:42 PM by Jozko
Analysis Method : C:\CHEM32\1\DATA\JC_SI_P4\JC_SI_P4 2013-01-18 14-53-00\005-0501.D\DA.M (JC_
SI_P4_MECN.M)
Last changed    : 1/17/2013 6:29:42 PM by Jozko
Method Info     : Analiza derivatov po redukciji progesterona
                  Voda / MeCN = 45 /55
                  Kolona: Agilent Eclipse Plus C16 150 x 4.6 mm, 5 µm
                  pretok 1.2 ml/min, 25 °C, V = 10 µl, 206 nm + 240 nm, 12 min

```

Sample Info : P4-3alpha, 20abeta



```

=====
                          Area Percent Report
=====

```

```

Sorted By           :      Signal
Multiplier          :      1.0000
Dilution           :      1.0000
Do not use Multiplier & Dilution Factor with ISTDs

```

Signal 1: MWD1 A, Sig=206,8 Ref=off

Peak #	RetTime [min]	Type	Width [min]	Area [mAU*s]	Height [mAU]	Area %
1	6.128	BV	0.1452	28.11866	3.05937	0.3667
2	6.530	VB	0.1486	169.58022	17.57164	2.2118
3	8.766	BB	0.2030	7469.30615	569.59607	97.4214

```
Totals :                      7667.00503  590.22708
```

```

=====
*** End of Report ***

```