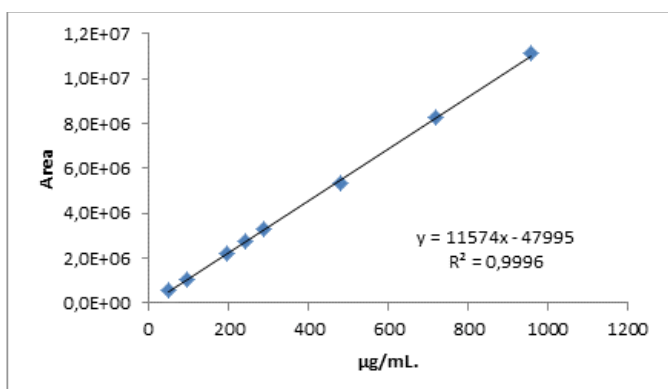


## Supplementary information section

A.

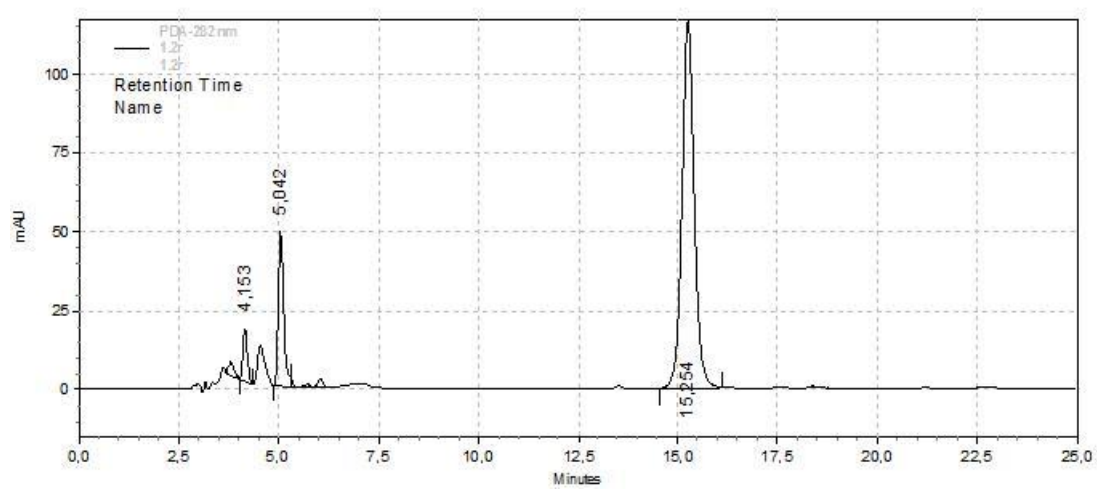
concentration ( $\mu\text{g/mL}$ )	area
48	570203
96	1068015
193	2188404
240	2745412
288	3290756
479	5340609
719	8258301
957	11108126

B.



**Figure S1.** Analytical curve of 4-nerolidylcatechol. A. Stock solutions of DCE (2396  $\mu\text{g/mL}$ ) were prepared in methanol and successively diluted in the range of 48 to 957  $\mu\text{g/mL}$ , two replicates each, in methanol. All samples were analyzed by HPLC. B. Correlation area under the curve (AUC) with the respective concentration of DCE.

## Supplementary information section



**Figure S2:** HPLC/DAD chromatogram of the dichloromethane crude extract from *P. umbellatum* leaves.