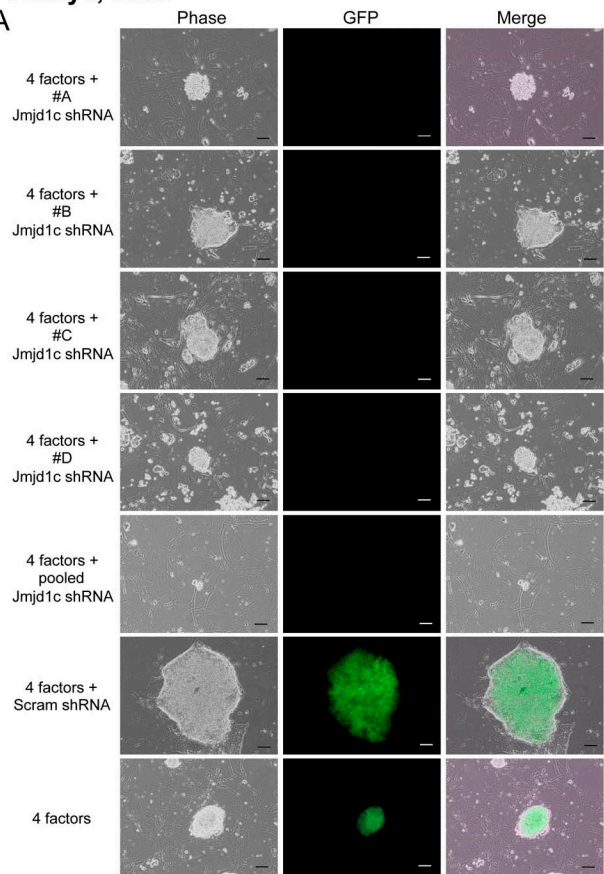


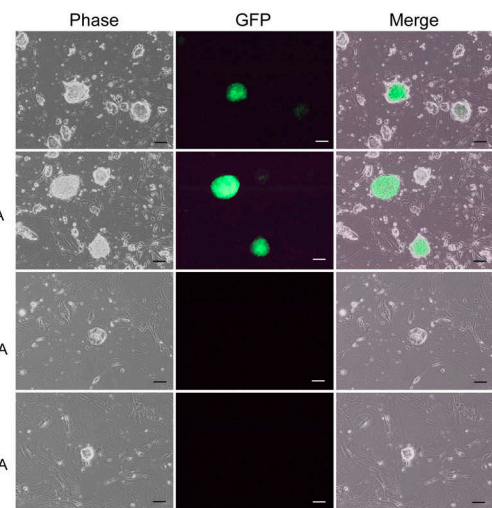
Shakya, et al.

A

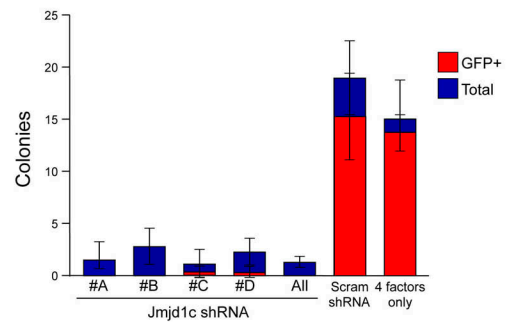


Supplemental Figure 4

B



C



Supplemental Fig. S4. Jmjd1c ablation inhibits iPSC formation.

A. Additional images similar to Fig. 5A. Example images from all four Jmjd1c shRNA knockdowns, and the pooled shRNA, are shown. B. Similar experiment was performed using murine reprogramming factors. Scale bars=100 μ m. C. Similar to Fig.5B except iPSC colonies using the murine reprogramming factors are shown. Quantification of total colonies and GFP+ colonies observed in individual wells of a 6-well plate. Averages were taken from four biological replicates. Error bars indicate \pm standard deviation.