

Sequence	-log q-...	-log PEP	Search Engi...	Score	Delta Score	z	Theo...	Meas...	Mass...	Fixed...	Varia...	Project	Exper...
MS ² R.MRAVLRS	2.2393	0.1	Mascot	24.63	9.46	2	760.4...	760.4...	7.67		Oxidat...	Par1_...	batch_1

> Reference spectrum

> Fragments

Select All Deselect All

a: 1+ 2+ 3+

b: 1+ 2+ 3+

c: 1+ 2+ 3+

x: 1+ 2+ 3+

y: 1+ 2+ 3+

z: 1+ 2+ 3+

yb:

IM:

M[H]:

Neutral loss:

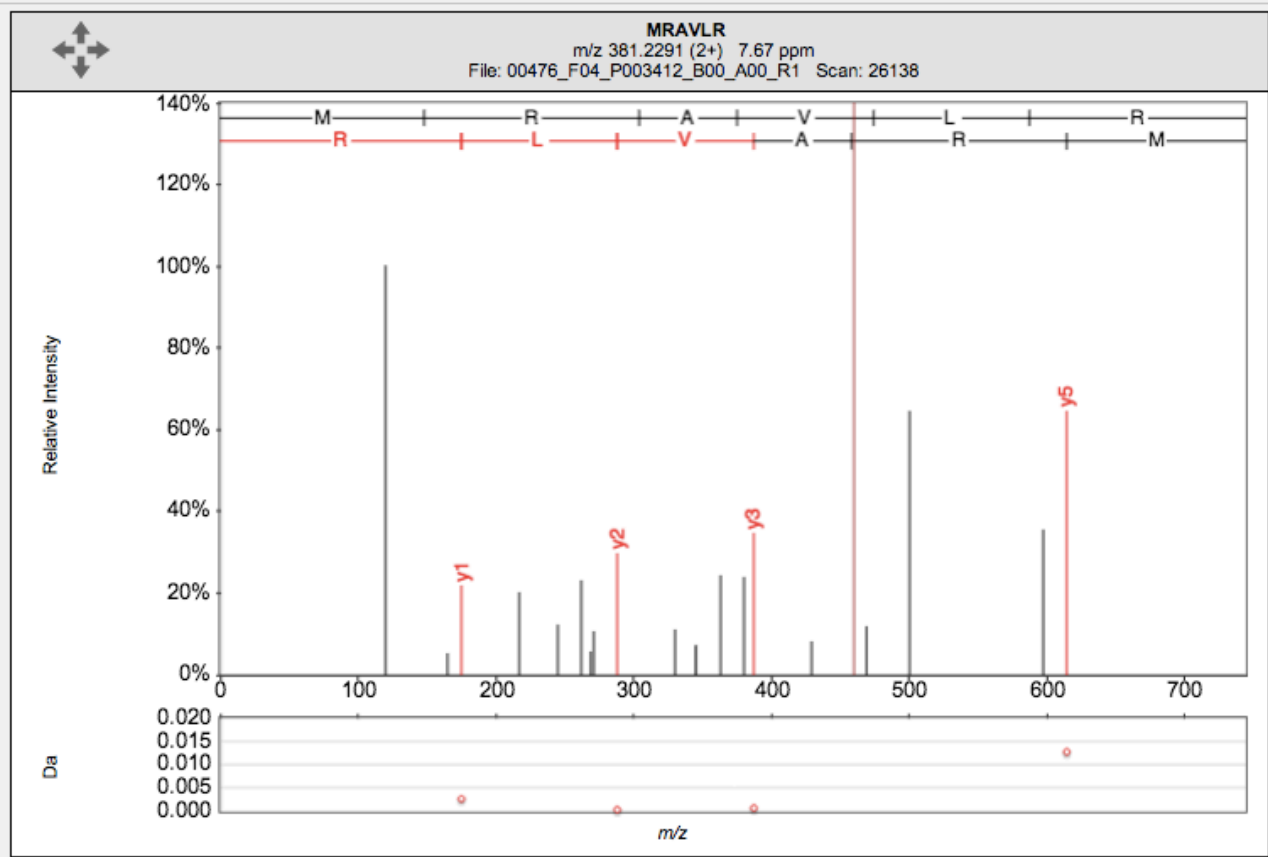
NH3 CH2N2 C3H6

Max neutral loss count: 3

Mass tolerance: 0.4 Da

Expert Mode: on off

> Configuration



#	Seq #	y1+
1	M 6	
2	R 5	614.4097
3	A 4	458.3085
4	V 3	387.2714
5	L 2	288.203
6	R 1	175.119

Sequence	-log q-...	-log PEP	Search Engi...	Score	Delta Score	z	Theo...	Meas...	Mass...	Fixed...	Varia...	Project	Exper...
MS ² R.MRAVLRSR.L	2.2997	0.21	Andromeda	90.66	34.65	2	1003....	1003....	0.01		Oxidat...	Cutler...	Roche...

> Reference spectrum

> Fragments

Select All Deselect All

a: 1+ 2+ 3+

b: 1+ 2+ 3+

c: 1+ 2+ 3+

x: 1+ 2+ 3+

y: 1+ 2+ 3+

z: 1+ 2+ 3+

yb:

IM:

M[H]:

Neutral loss:

C3H9N3 H2O NH3

CO CH4O CH2N2

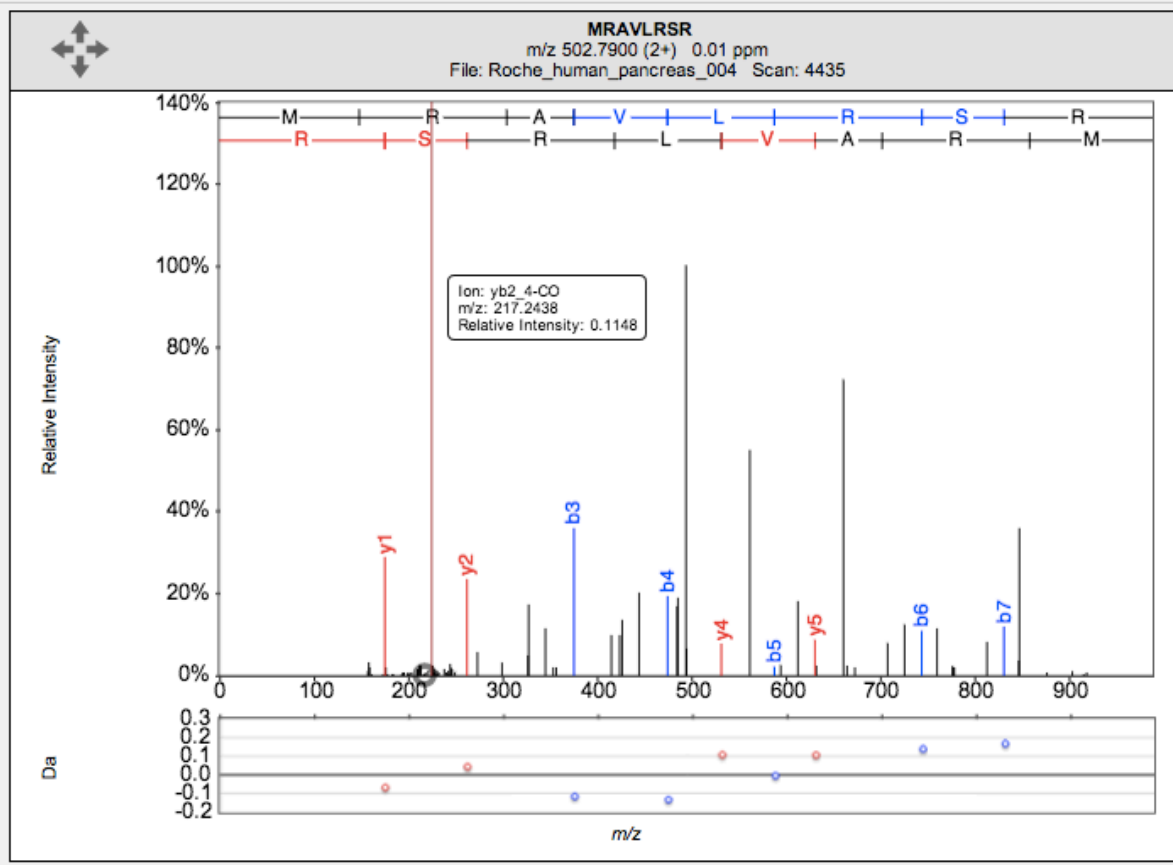
C4H6N2

Max neutral loss count: 3

Mass tolerance: 0.4 Da

Expert Mode: on off

> Configuration



b1+	#	Seq	#	y1+
148.0427	1	M	8	
304.1438	2	R	7	857.5428
375.1809	3	A	6	701.4417
474.2493	4	V	5	630.4046
587.3334	5	L	4	531.3362
743.4345	6	R	3	418.2521
830.4665	7	S	2	262.151
	8	R	1	175.119

Sequence	-log q-...	-log PEP	Search Engl...	Score	Delta Score	z	Theo...	Meas...	Mass...	Fixed...	Varia...	Project	Exper...
MS² K.EYLEINK.I	2.9425	1.49	Andromeda	114.19	28.92	2	907.4...	907.4...	0.01			Geige...	MFM
MS² K.EYLEINK.I	2.9425	1.49	Andromeda	114.19	28.92	2	907.4...	907.4...	0.01			Geige...	MFM
MS² K.EYLEINK.I	2.3255	0.93	Andromeda	81.3	12.88	2	907.4...	907.4...	0.01			Geige...	HCC1...
MS² K.EYLEINK.I	2.3255	0.93	Andromeda	81.3	12.88	2	907.4...	907.4...	0.01			Geige...	HCC1...
MS² K.EYLEINK.I	2.2642	0.82	Andromeda	47.92	15.96	2	907.4...	907.4...	0.01			Nagar...	Deep ...

< 1 2 >

> Reference spectrum

> Fragments

Select All Deselect All

a: 1+ 2+ 3+

b: 1+ 2+ 3+

c: 1+ 2+ 3+

x: 1+ 2+ 3+

y: 1+ 2+ 3+

z: 1+ 2+ 3+

yb:

IM:

M[H]:

Neutral loss:

NH3 H2O C4H11N

CH3NO C2H4 C4H8

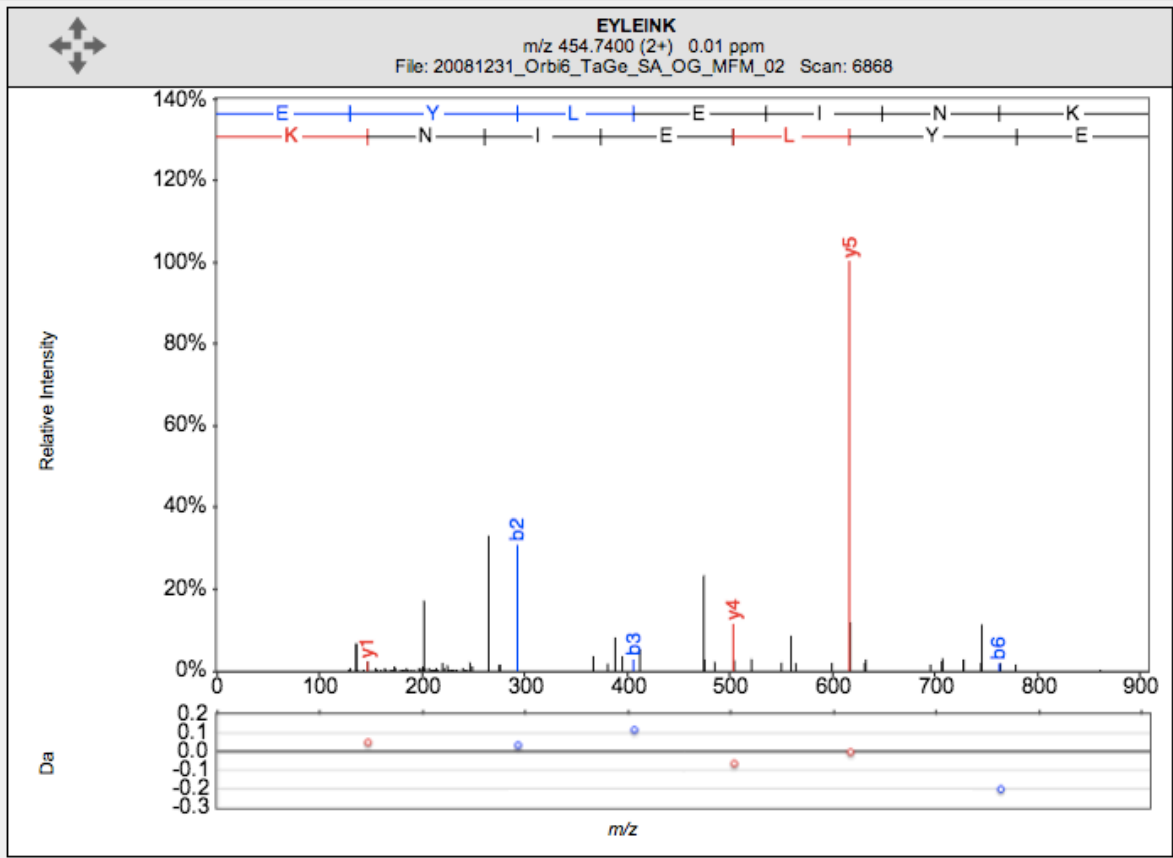
C2H4O2

Max neutral loss count: 3

Mass tolerance: 0.4 Da

Expert Mode: on off

> Configuration



b1+	#	Seq	#	y1+
130.0499	1	E	7	
293.1132	2	Y	6	779.4298
406.1973	3	L	5	616.3665
535.2399	4	E	4	503.2824
648.3239	5	I	3	374.2398
762.3668	6	N	2	261.1557
	7	K	1	147.1128

Sequence	-log q...	-log PEP	Search Engl...	Score	Delta Score	z	Theo...	Meas...	Mass...	Fixed...	Varia...	Project	Exper...
MS² R.YATICPLR.Y	2.2871	1.69	Andromeda	48.28	12.77	2	1152...	1152...	0	Carba...		Pirmor...	Full pr...
MS² R.YATICPLR.Y	2.0744	0.91	Andromeda	43.08	11.59	2	1152...	1152...	0	Carba...		Pirmor...	Full pr...

> Reference spectrum

> Fragments

Select All Deselect All

a: 1+ 2+ 3+

b: 1+ 2+ 3+

c: 1+ 2+ 3+

x: 1+ 2+ 3+

y: 1+ 2+ 3+

z: 1+ 2+ 3+

yb:

IM:

M[H]:

Neutral loss:

H₂O NH₃ C₄H₆N₂

C₃H₉N₃ C₄H₈ CH₂N₂

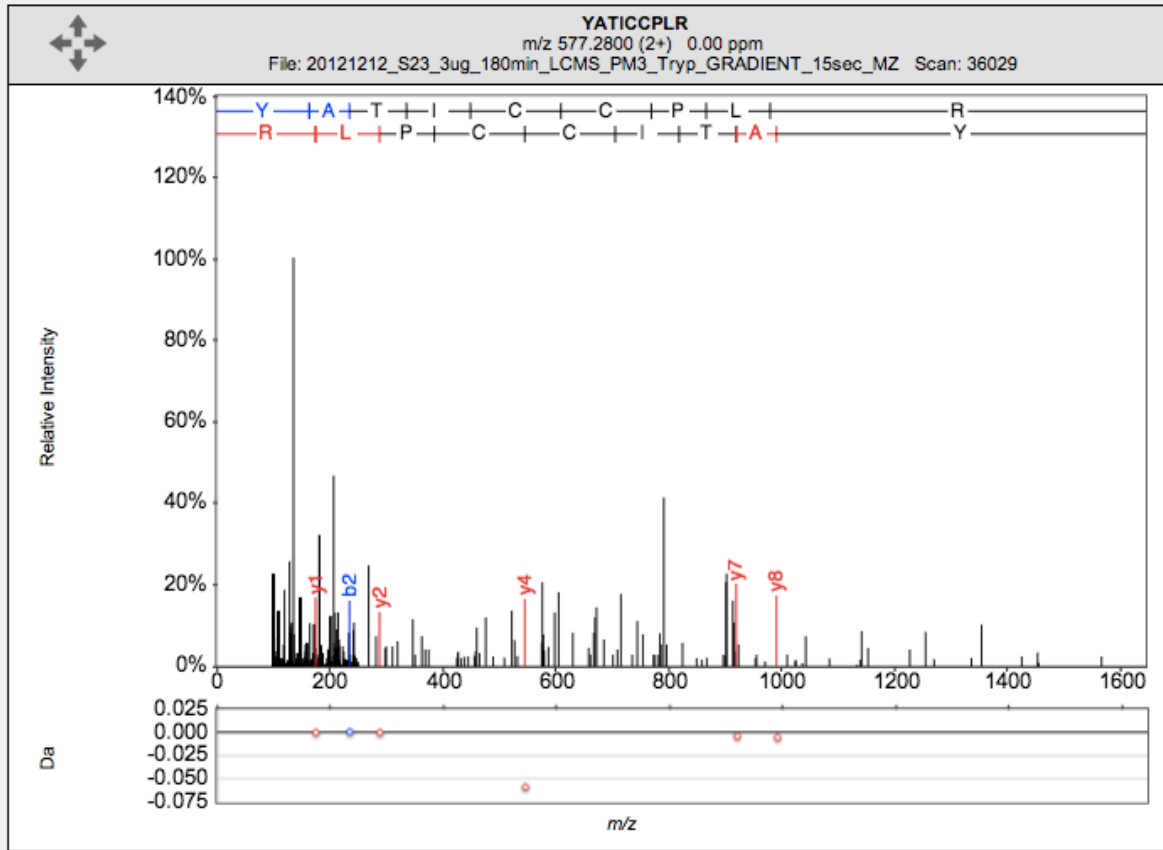
C₃H₆ CO C₂H₄O

Max neutral loss count: 3

Mass tolerance: 0.4 Da

Expert Mode: on off

> Configuration



b1+	#	Seq	#	y1+
164.0706	1	Y	9	
235.1077	2	A	8	990.4859
336.1554	3	T	7	919.4488
449.2395	4	I	6	818.4011
609.2701	5	C	5	705.3171
769.3008	6	C	4	545.2864
866.3535	7	P	3	385.2558
979.4376	8	L	2	288.203
	9	R	1	175.119

Sequence	-log q-...	-log PEP	Search Engl...	Score	Delta Score	z	Theo...	Meas...	Mass...	Fixed...	Varia...	Project	Exper...
MS² K.VLANLGSR.D	2.2639	0.04	Mascot	8.17	1.76	2	828.4...	828.4...	1.52			Geige...	Prote...

> Reference spectrum

> Fragments

Select All Deselect All

a: 1+ 2+ 3+

b: 1+ 2+ 3+

c: 1+ 2+ 3+

x: 1+ 2+ 3+

y: 1+ 2+ 3+

z: 1+ 2+ 3+

yb:

IM:

M[H]:

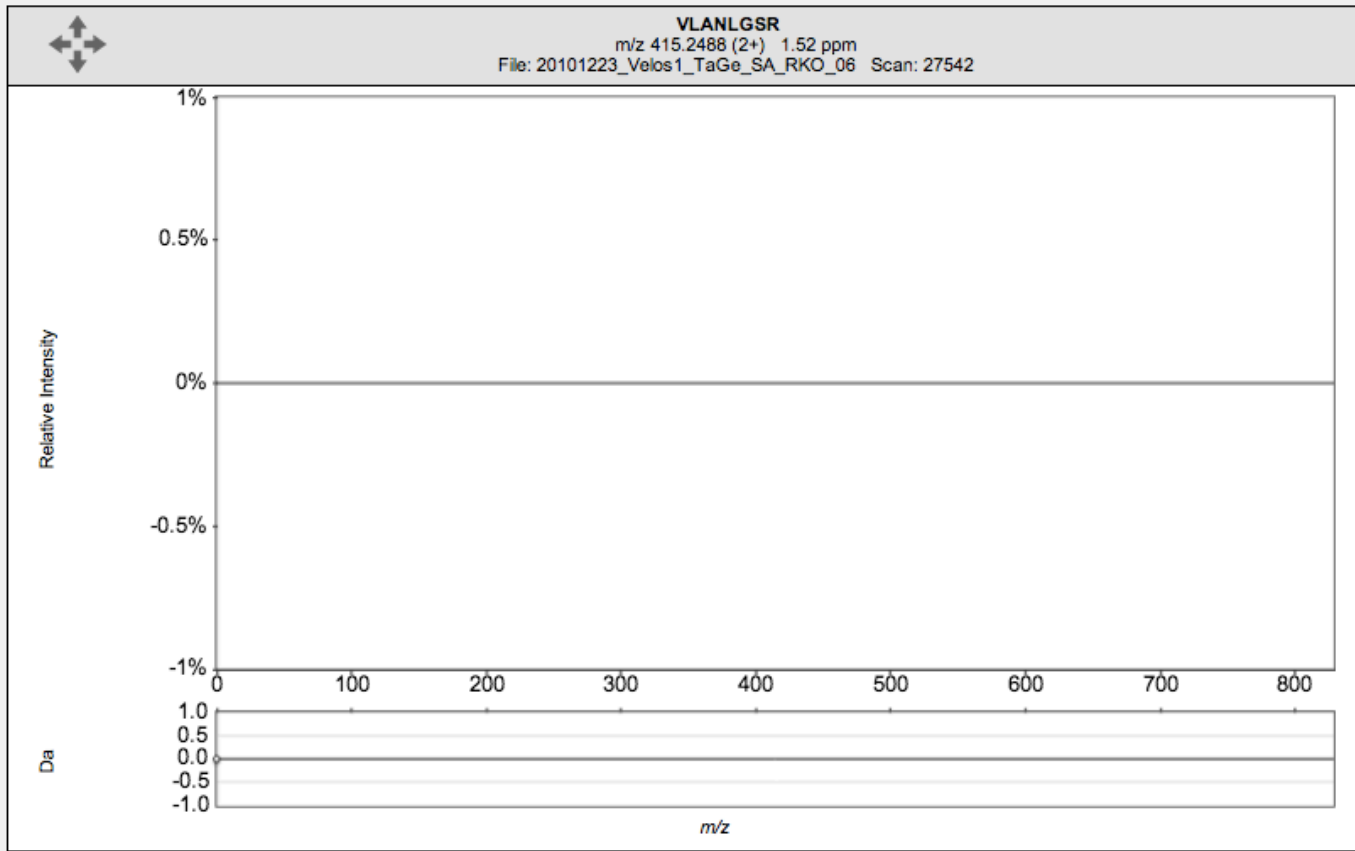
Neutral loss:

Max neutral loss count: 3

Mass tolerance: 0.4 Da

Expert Mode: on off

> Configuration



#	Seq	#
1	V	8
2	L	7
3	A	6
4	N	5
5	L	4
6	G	3
7	S	2
8	R	1

Sequence	-log q-...	-log PEP	Search Engi...	Score	Delta Score	z	Theo...	Meas...	Mass...	Fixed...	Varia...	Project	Exper...
MS² K.RMRAVLR.S	2.4405	1.03	Mascot	22.78	1.77	2	900.5...	900.5...	6.99			Geige...	MCF10a
MS² K.RMRAVLR.S	2.4405	1.03	Mascot	22.78	1.77	2	900.5...	900.5...	6.99			Geige...	MCF10a
MS² K.RMRAVLR.S	2.0027	0.02	Mascot	23.97	n/a	2	900.5...	900.5...	4.92			CPTA...	Clinic...

> Reference spectrum

> Fragments

Select All Deselect All

a: 1+ 2+ 3+

b: 1+ 2+ 3+

c: 1+ 2+ 3+

x: 1+ 2+ 3+

y: 1+ 2+ 3+

z: 1+ 2+ 3+

yb:

IM:

M[H]:

Neutral loss:

C4H6N2 C3H6S C3H9N3

H2O C3H6 CH2N2

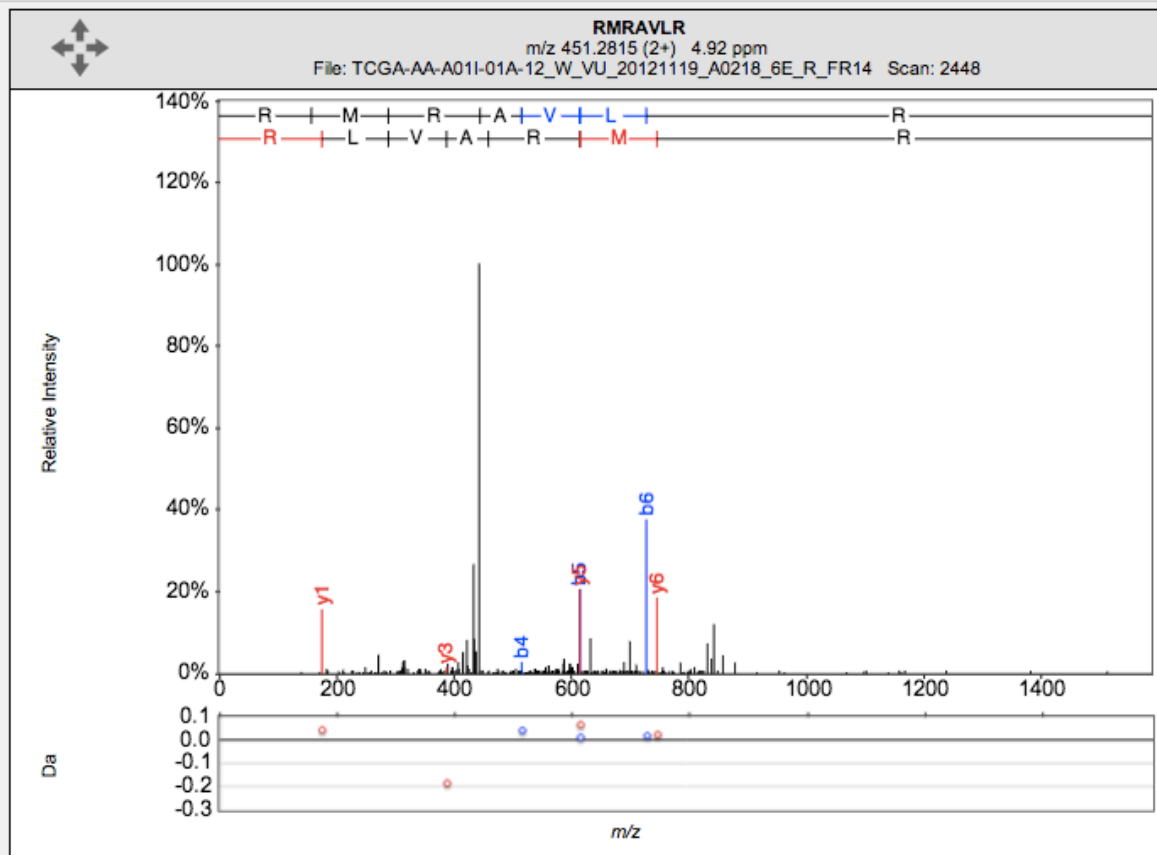
C4H8 NH3 C2H4S

Max neutral loss count:

Mass tolerance: Da

Expert Mode: on off

> Configuration



b1+	#	Seq	#	y1+
157.1084	1	R	7	
288.1489	2	M	6	745.4501
444.25	3	R	5	614.4097
515.2871	4	A	4	458.3085
614.3555	5	V	3	387.2714
727.4396	6	L	2	288.203
	7	R	1	175.119

Sequence	-log q...	-log PEP	Search Engl...	Score	Delta Score	z	Theo...	Meas...	Mass...	Fixed...	Varia...	Project	Exper...
MS² K.EYLEINK.I	2.9425	1.49	Andromeda	114.19	28.92	2	907.4...	907.4...	0.01			Geige...	MFM
MS² K.EYLEINK.I	2.9425	1.49	Andromeda	114.19	28.92	2	907.4...	907.4...	0.01			Geige...	MFM
MS² K.EYLEINK.I	2.3255	0.93	Andromeda	81.3	12.88	2	907.4...	907.4...	0.01			Geige...	HCC1...
MS² K.EYLEINK.I	2.3255	0.93	Andromeda	81.3	12.88	2	907.4...	907.4...	0.01			Geige...	HCC1...
MS² K.EYLEINK.I	2.2642	0.82	Andromeda	47.92	15.96	2	907.4...	907.4...	0.01			Nagar...	Deep ...

< 1 2 >

> Reference spectrum

> Fragments

Select All Deselect All

a: 1+ 2+ 3+

b: 1+ 2+ 3+

c: 1+ 2+ 3+

x: 1+ 2+ 3+

y: 1+ 2+ 3+

z: 1+ 2+ 3+

yb:

IM:

M[H]:

Neutral loss:

NH3 H2O C4H11N

CH3NO C2H4 C4H8

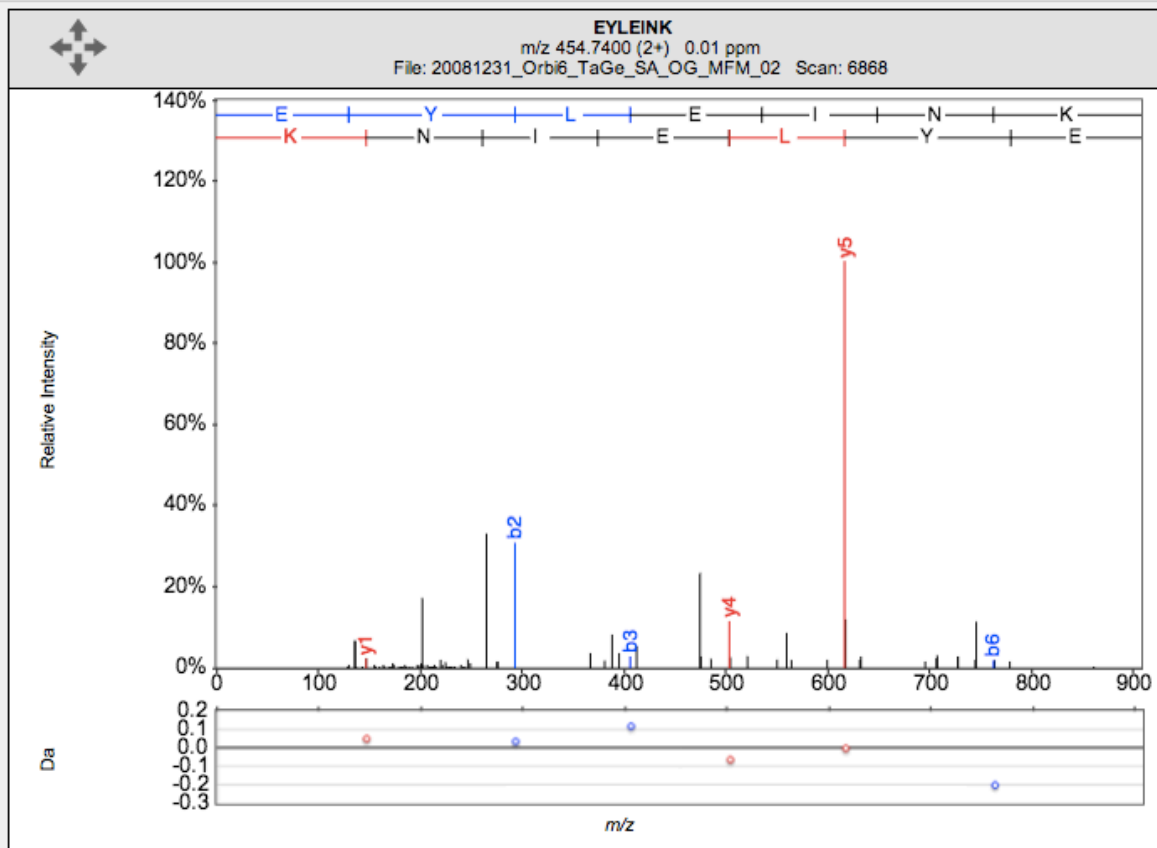
C2H4O2

Max neutral loss count: 3

Mass tolerance: 0.4 Da

Expert Mode: on off

> Configuration



b1+	#	Seq	#	y1+
130.0499	1	E	7	
293.1132	2	Y	6	779.4298
406.1973	3	L	5	616.3665
535.2399	4	E	4	503.2824
648.3239	5	I	3	374.2398
762.3668	6	N	2	261.1557
	7	K	1	147.1128

Sequence	$-\log q\text{-}...$	$-\log \text{PEP}$	Search Engl...	Score	Delta Score	z	Theo...	Meas...	Mass...	Fixed...	Varia...	Project	Exper...
MS² R.NDTVQGVL RDVWVR.V	2.3816	2.45	Andromeda	98.9	38.35	2	1655....	1655....	0			CPTA...	Clinic...

> Reference spectrum

> Fragments

Select All Deselect All

a: 1+ 2+ 3+

b: 1+ 2+ 3+

c: 1+ 2+ 3+

x: 1+ 2+ 3+

y: 1+ 2+ 3+

z: 1+ 2+ 3+

yb:

IM:

M[H]:

Neutral loss:

C2H5NO CO2 C2H4O

C4H8 C2O C2H4O2

C4H6N2 NH3 C3H5NO

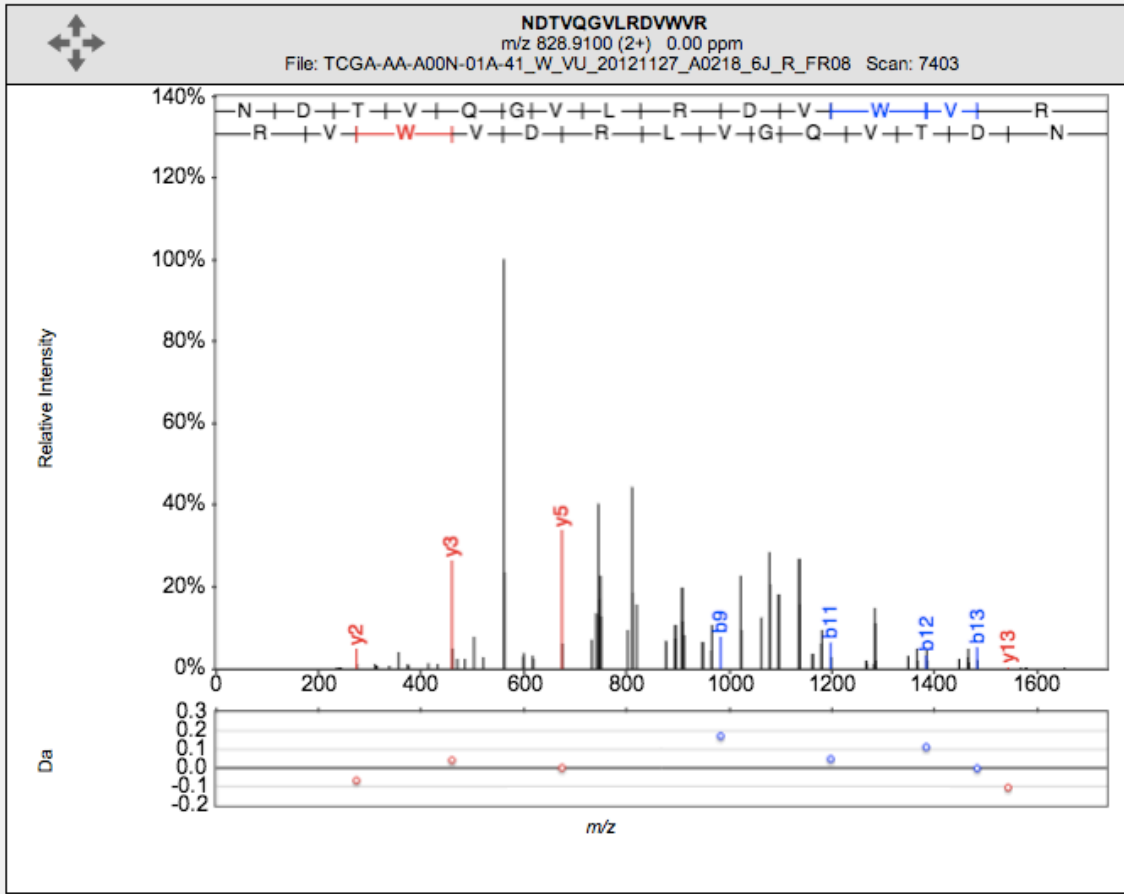
H2O

Max neutral loss count: 3

Mass tolerance: 0.4 Da

Expert Mode: on off

> Configuration



b1+	#	Seq	#	y1+
115.0502	1	N	14	
230.0771	2	D	13	1542.8387
331.1248	3	T	12	1427.8118
430.1932	4	V	11	1326.7641
558.2518	5	Q	10	1227.6957
615.2733	6	G	9	1099.6371
714.3417	7	V	8	1042.6156
827.4258	8	L	7	943.5472
983.5269	9	R	6	830.4631
1098.5538	10	D	5	674.362
1197.6222	11	V	4	559.3351
1383.7015	12	W	3	460.2667
1482.77	13	V	2	274.1874
	14	R	1	175.119