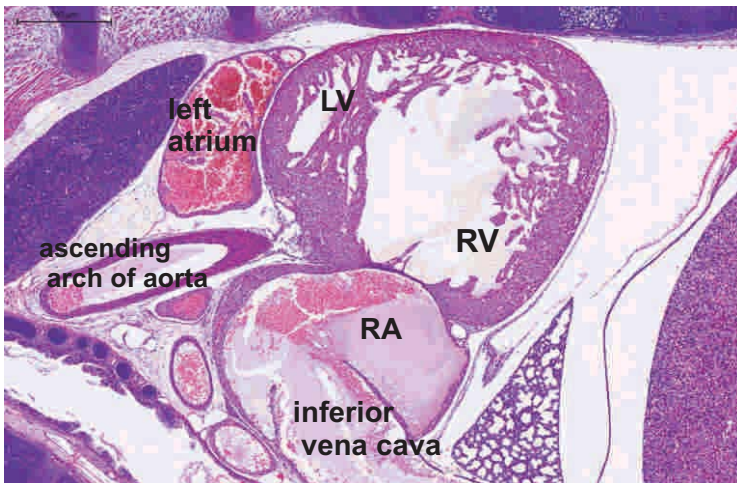


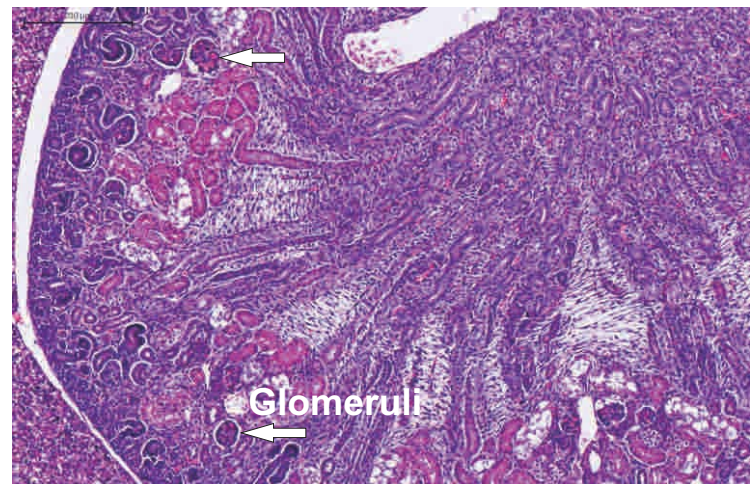
#1 control Liver x20 29612



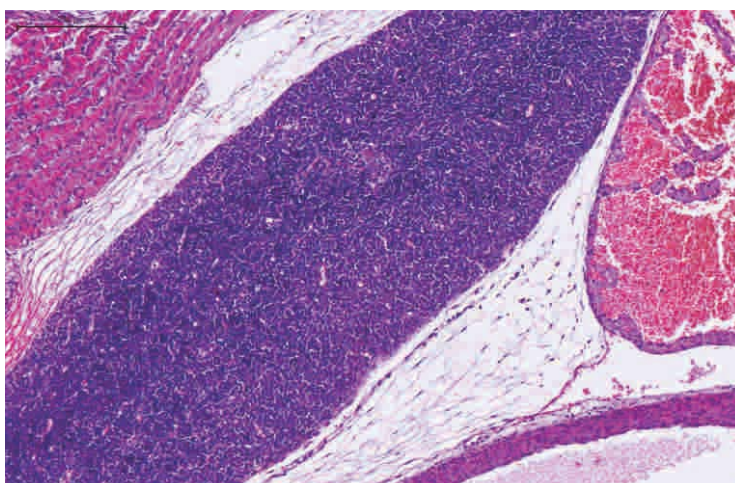
#1 control pancreas x20 29612



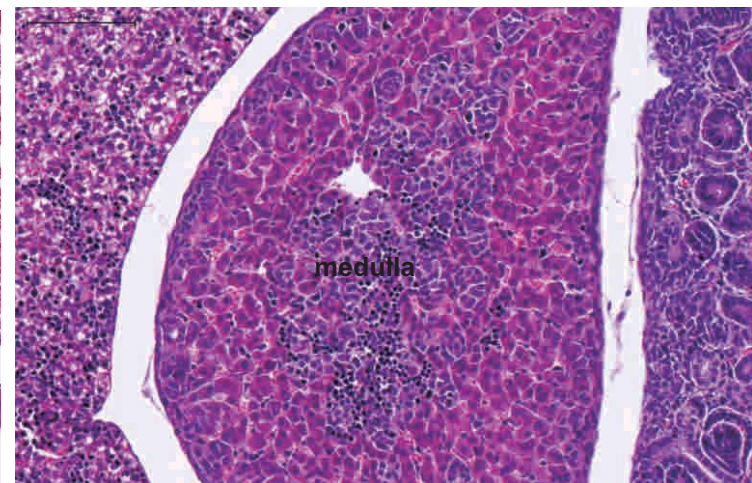
#1 control heart x5 29612



#1 control kidney x10 29612

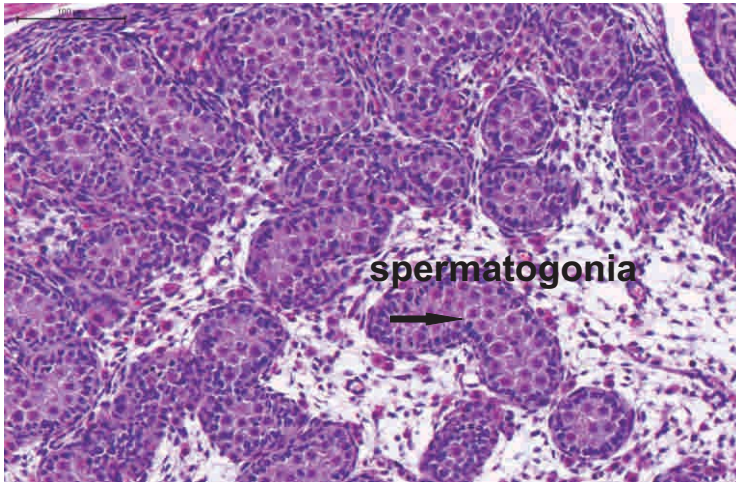


#1 control thymus x10 29612

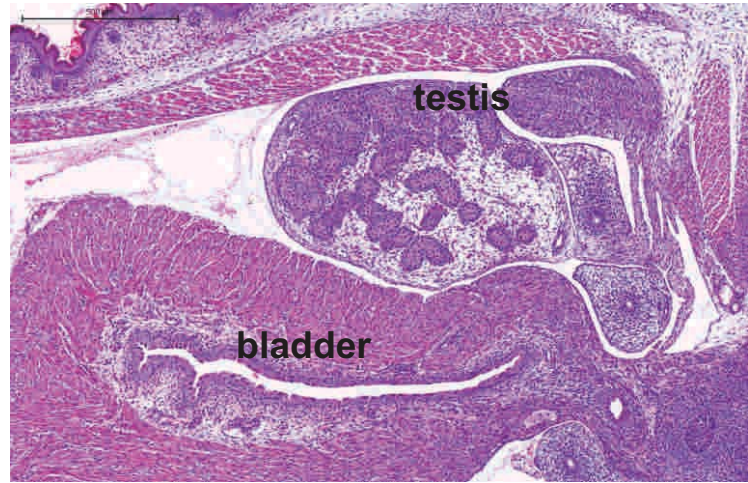


#1 control adrenal gland x20 29615

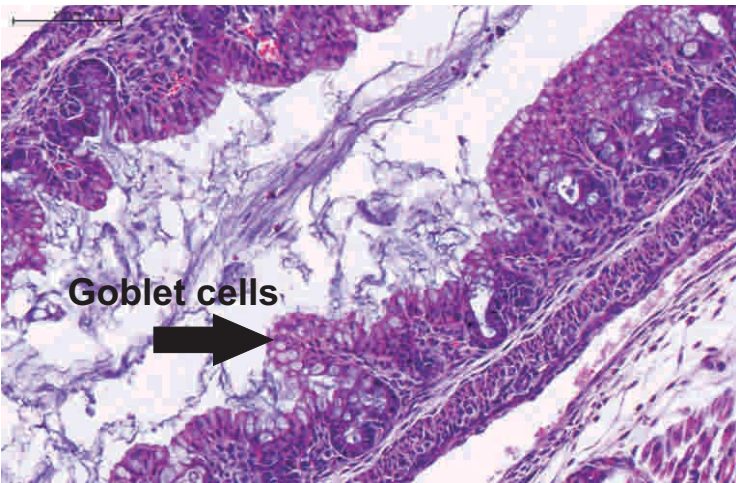
APN13/052MCRI



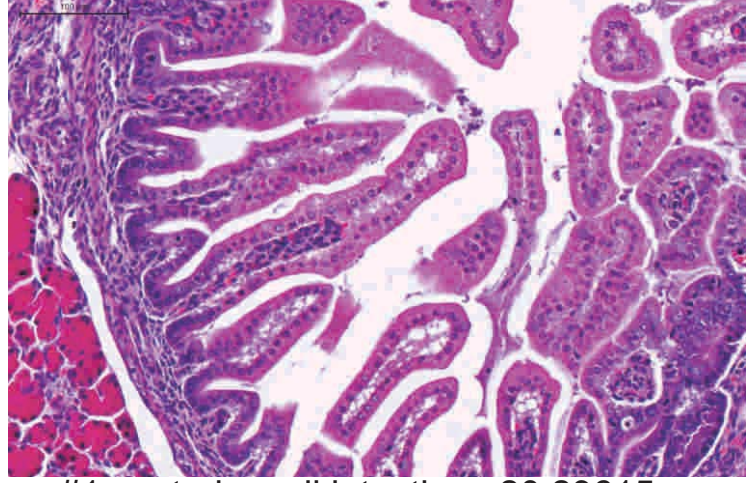
#1 control testis x20 29615



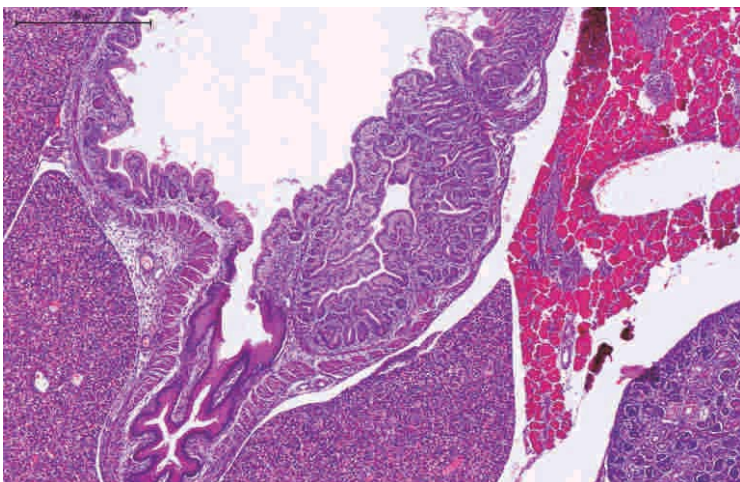
#1 control bladder & testis x5 29615



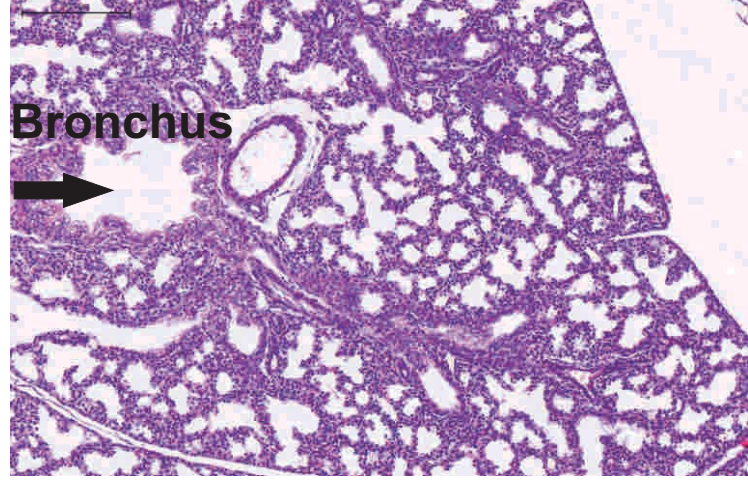
#1 control colon x20 29615



#1 control small intestine x20 29615

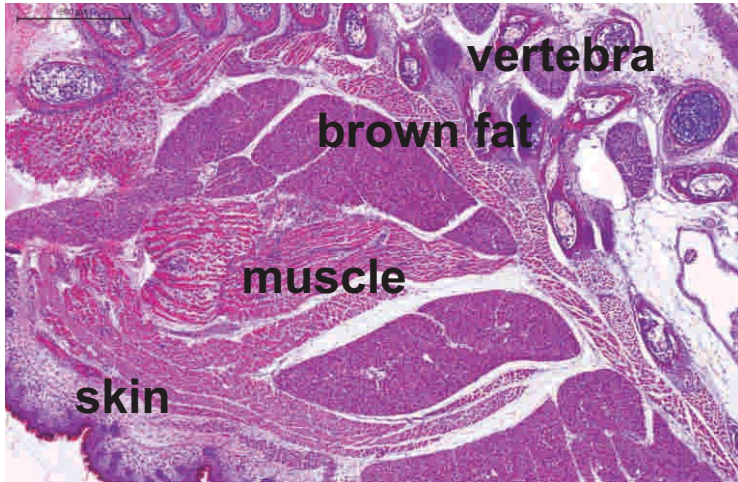


#1 control stomach x5 29624

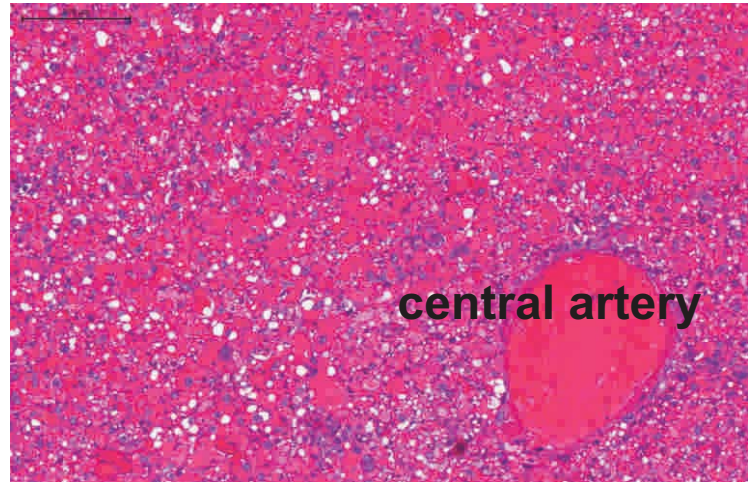


#1 control lung x10 29615

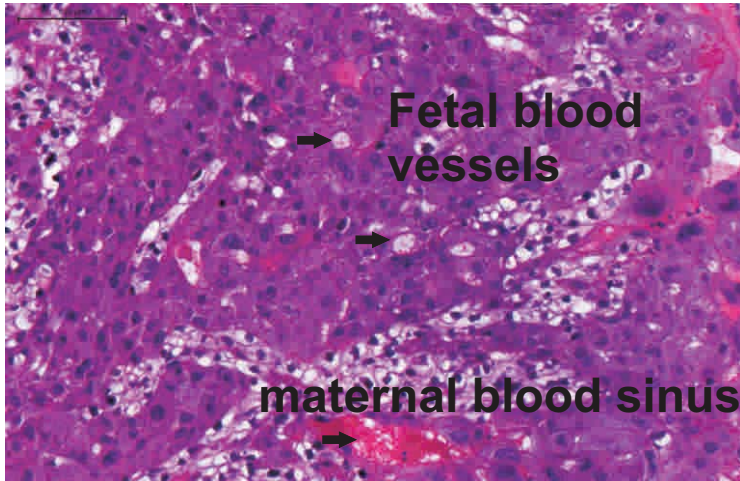
APN13/052MCRI



#1 control skin brown fat & vertebra x5 29621



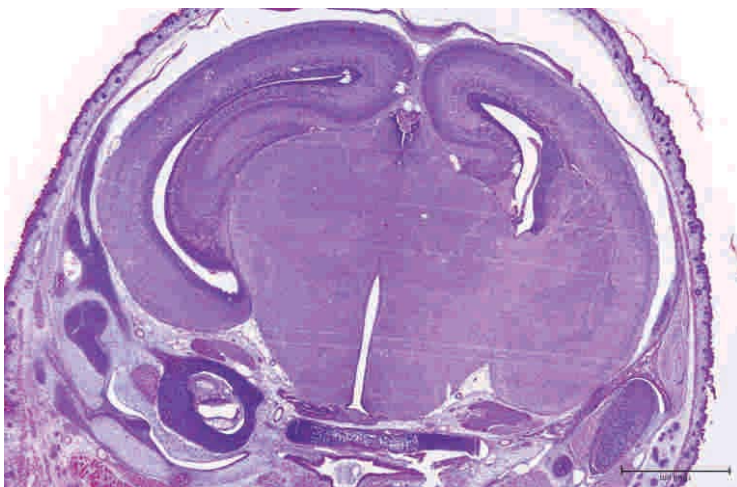
#1 cont placenta-decidua x10 29620



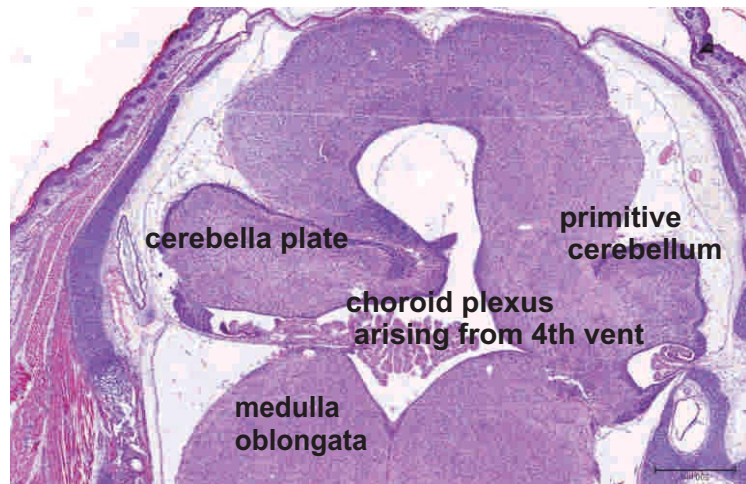
#1 control placenta- labyrinth x20 29614



#1 cont forebrain x2 29632

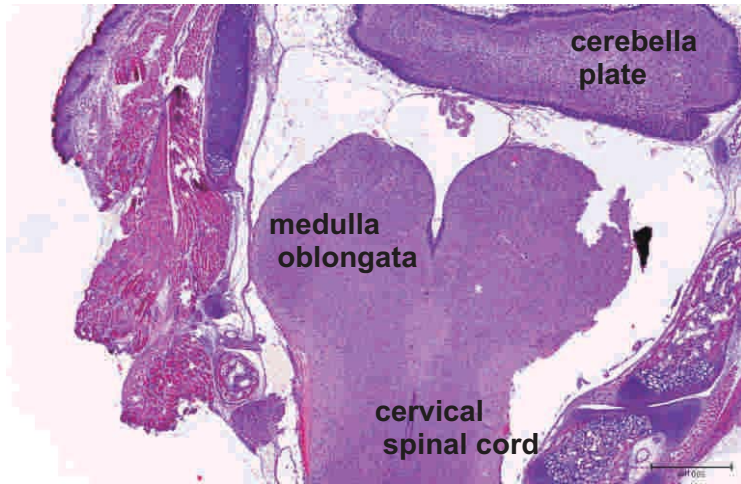


#1 cont mid brain x2 29635
Note: oblique plane

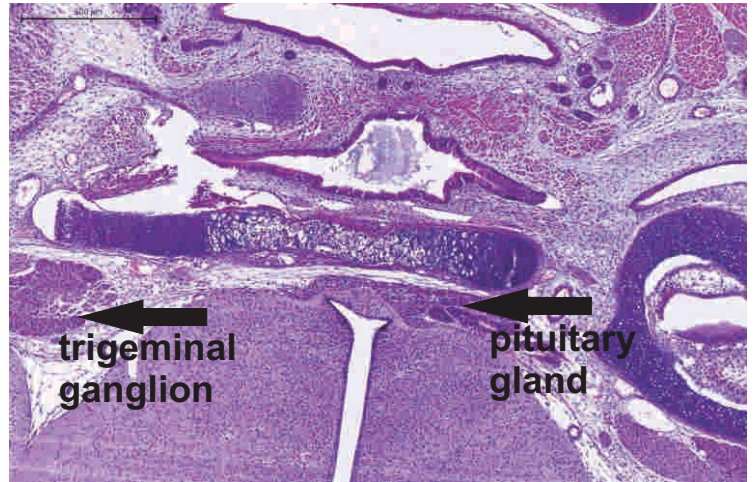


#1 cont developing cerebellum
x3 29642

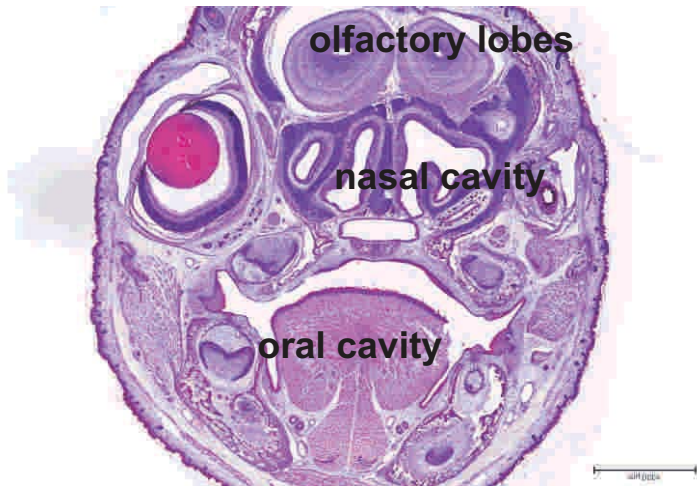
APN13/052MCRI



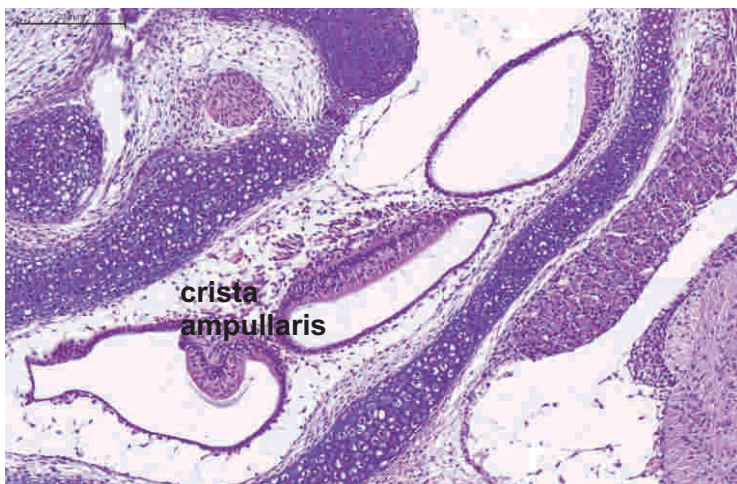
#1 cont hind brain x3 29644



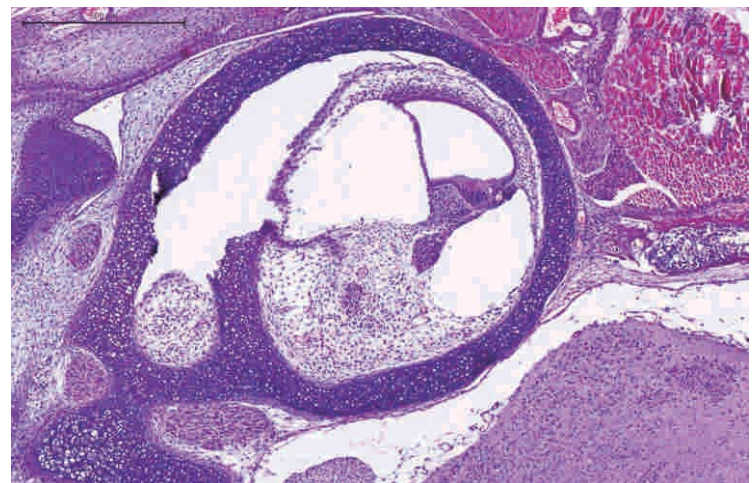
#1 control pituitary gland x10 29635



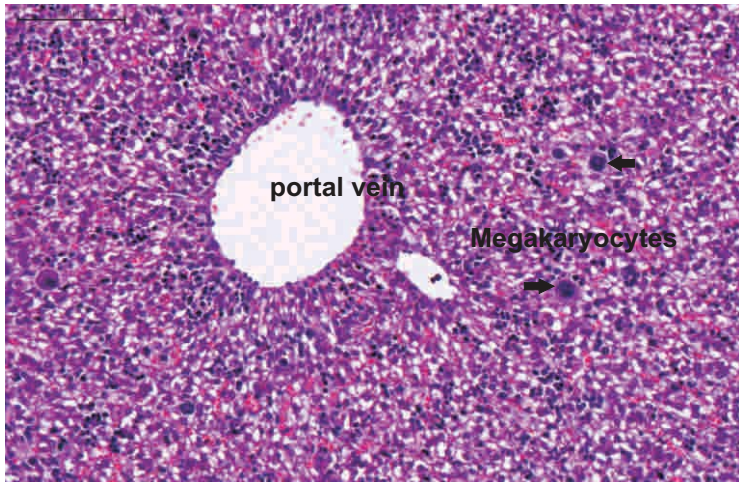
#1 olfactory lobes & eye x2 29628



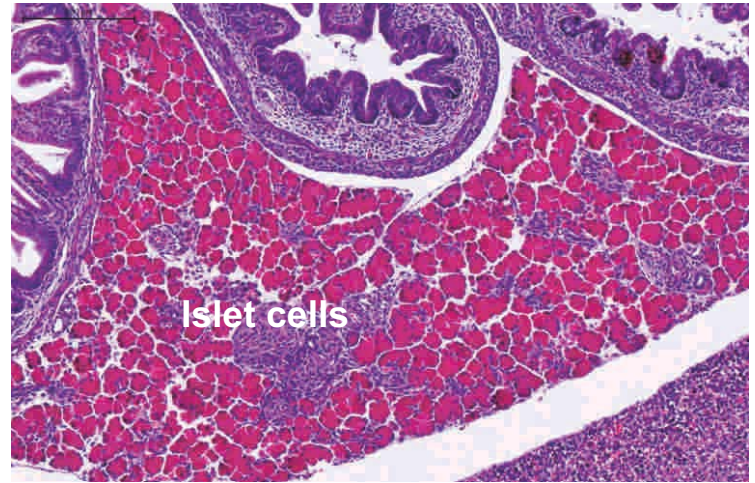
#1 cont semicircular canals
x10 29639



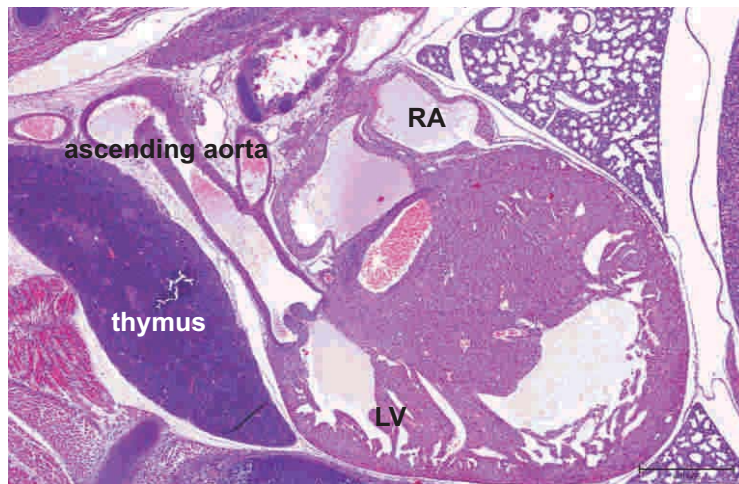
#1 cont developing
cochlea x10 29638



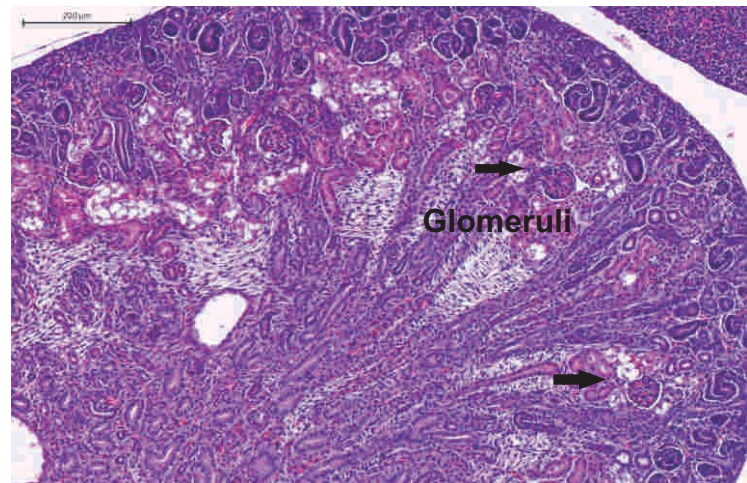
#2 Liver x20 29648



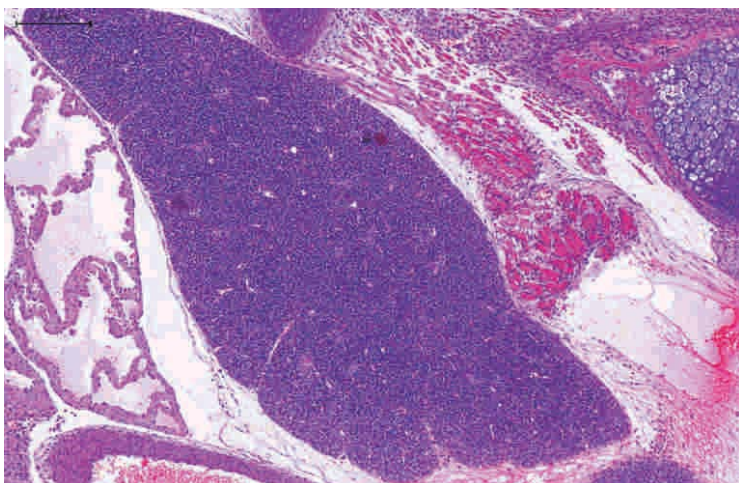
#2 Pancreas x10 29657



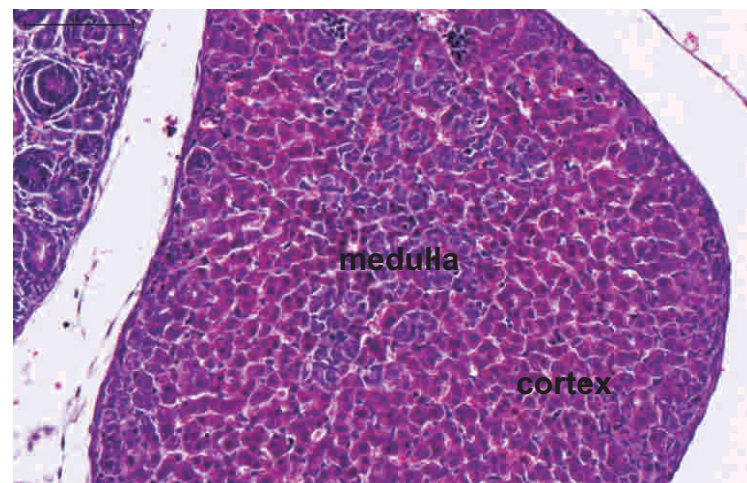
#2 Heart x5 29645



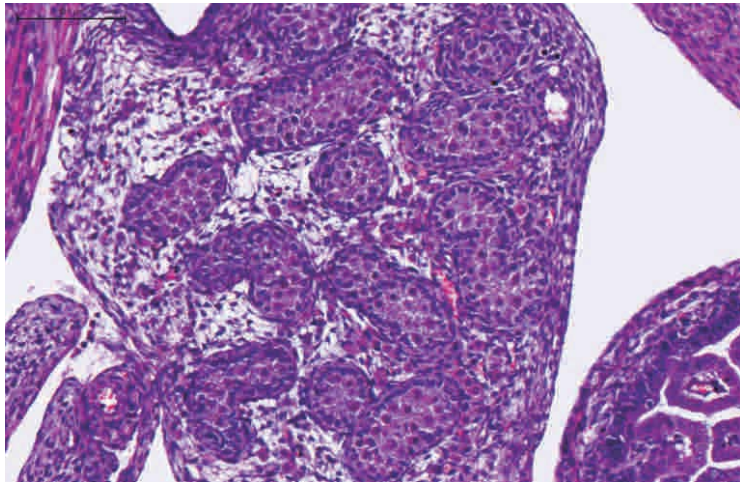
#2 Kidney x10 29648



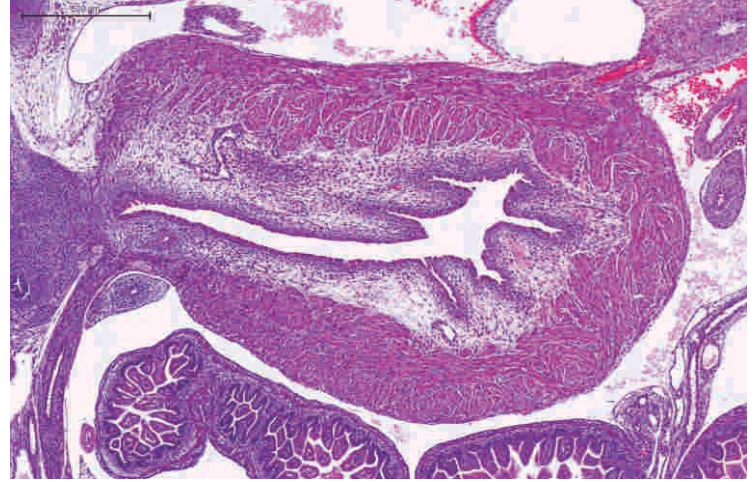
#2 Thymus x5 29649



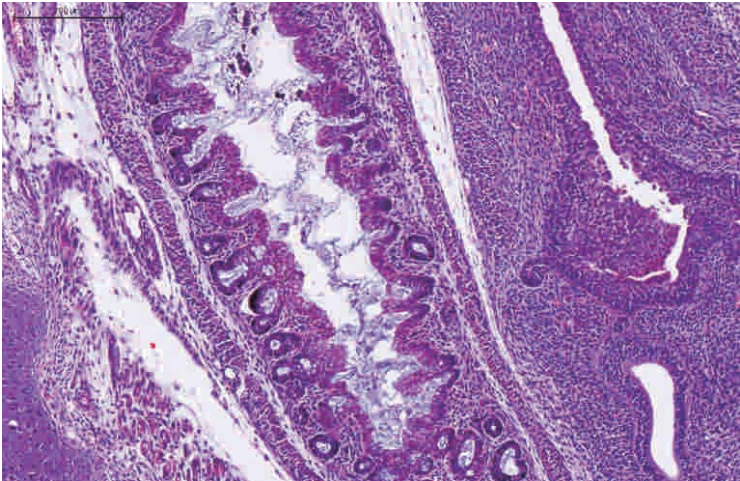
#2 Adrenal gland x10 29647



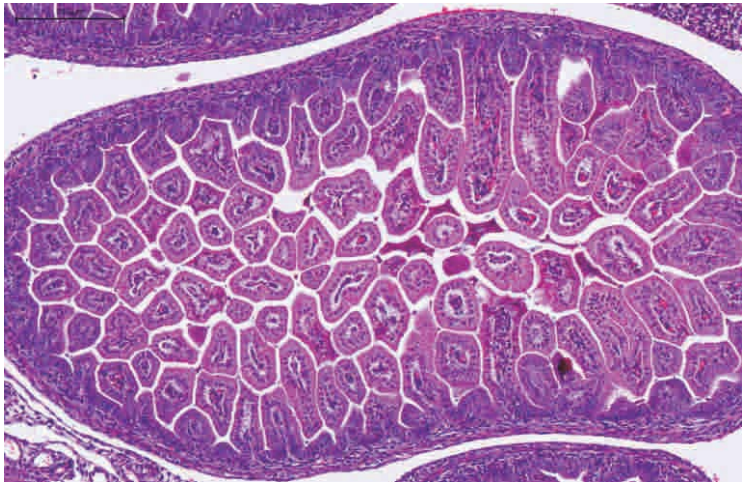
#2 Testis x20 29645



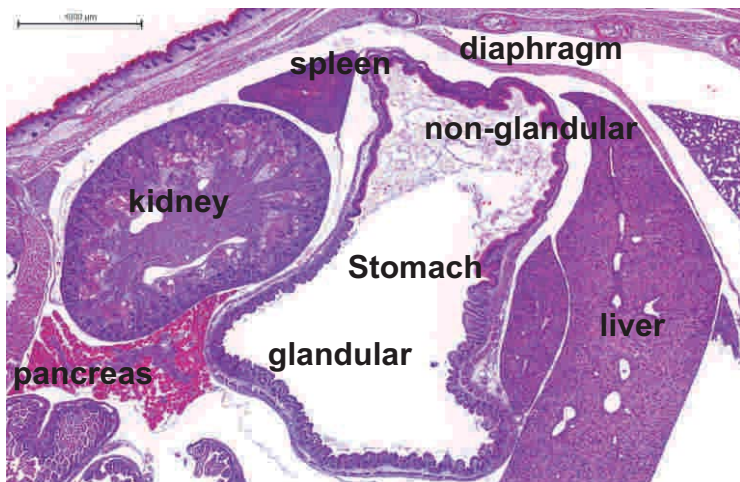
#2 Bladder x10 29648



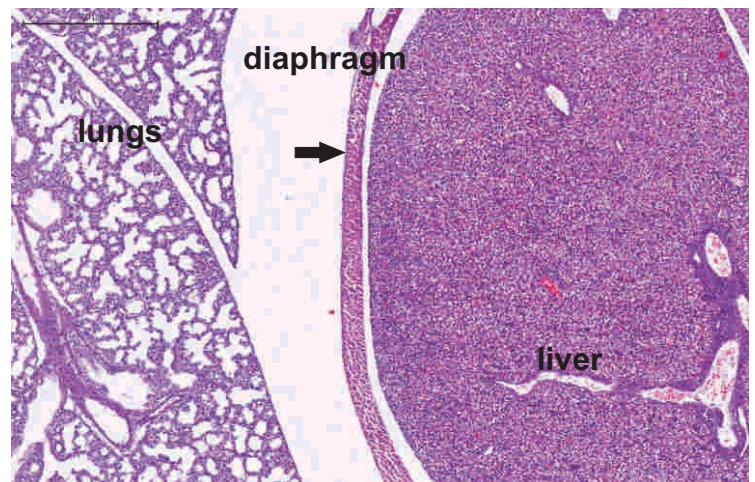
#2 Colon x10 29649



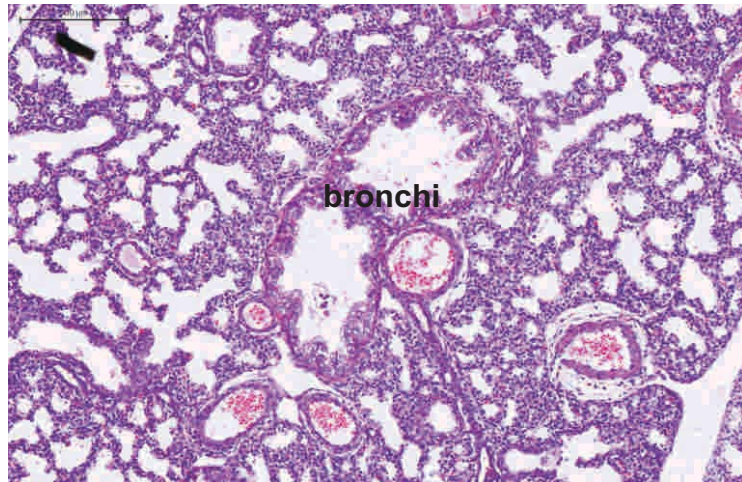
#2 Small intestine x10 29649



#2 Stomach 29648

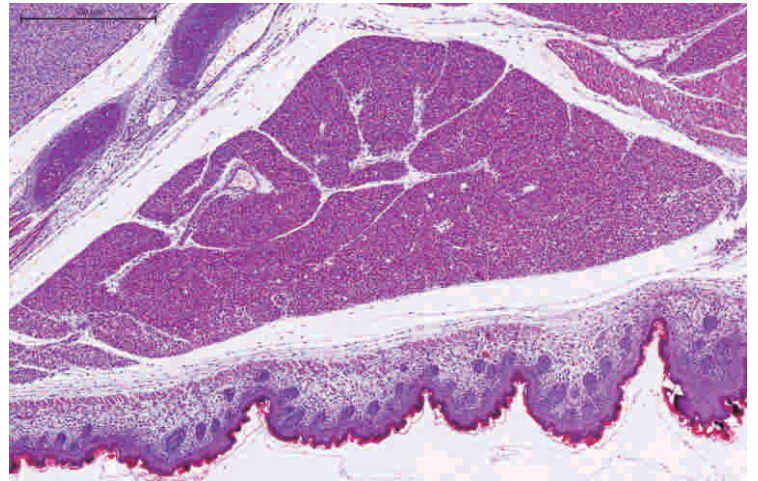


#2 Diaphragm x5 29656

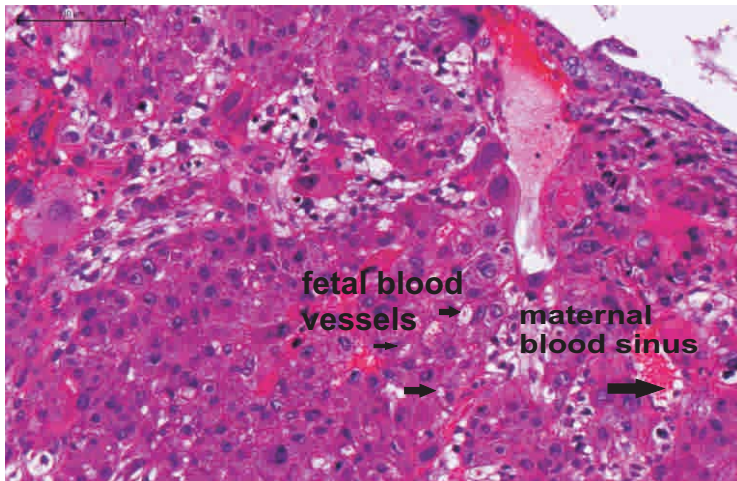


bronchi

#2 lung x10 29656

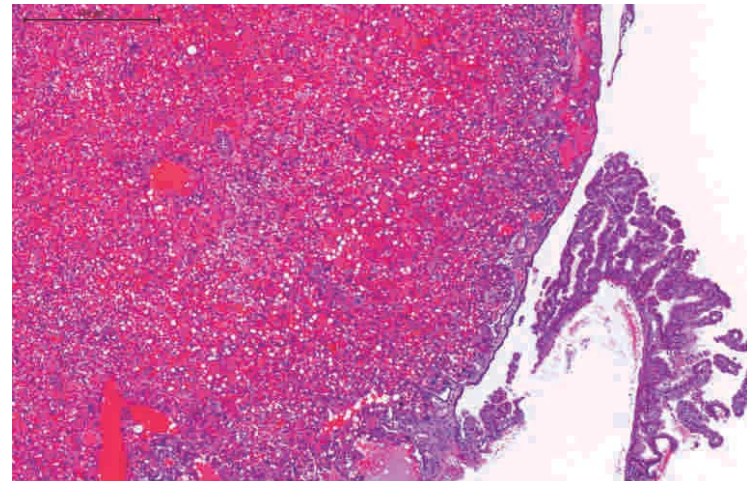


#2 skin and brown fat x5 29649

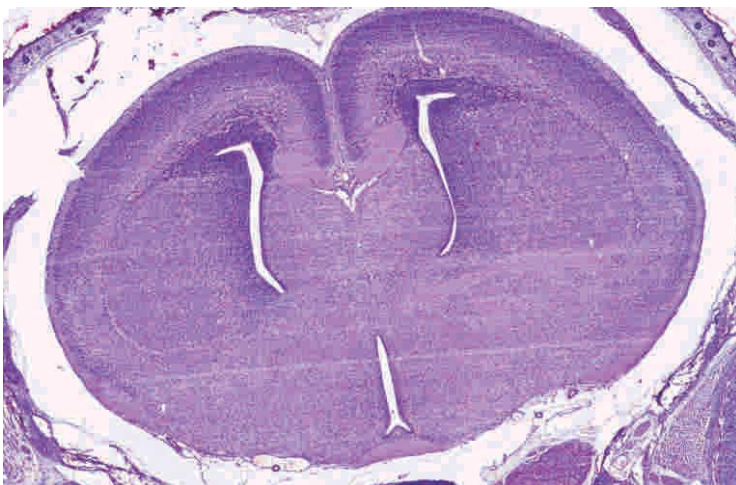


fetal blood vessels
maternal blood sinus

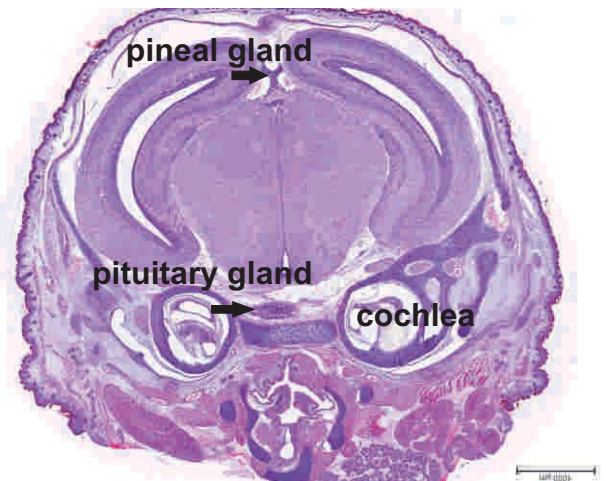
#2 placenta labyrinth x20 29655



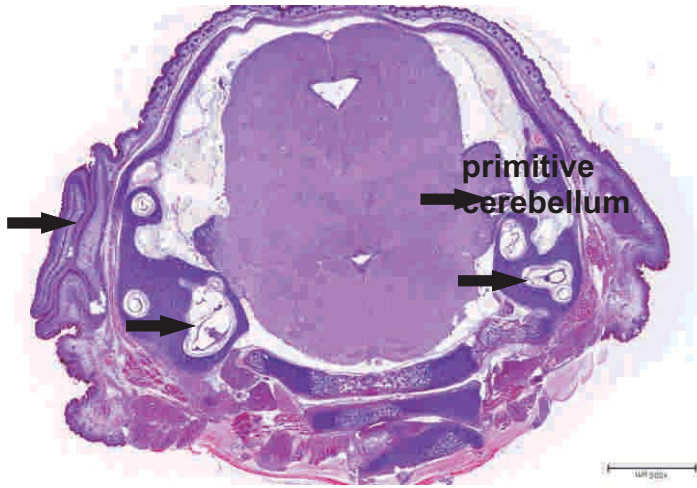
#2 placenta-deciduax5 29648



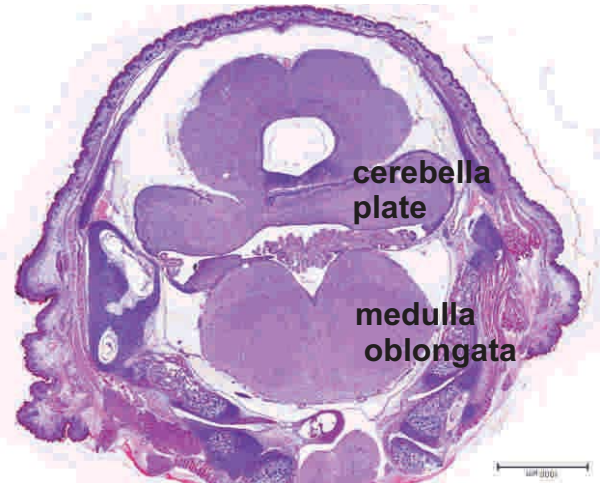
#2 forebrain x3 29667



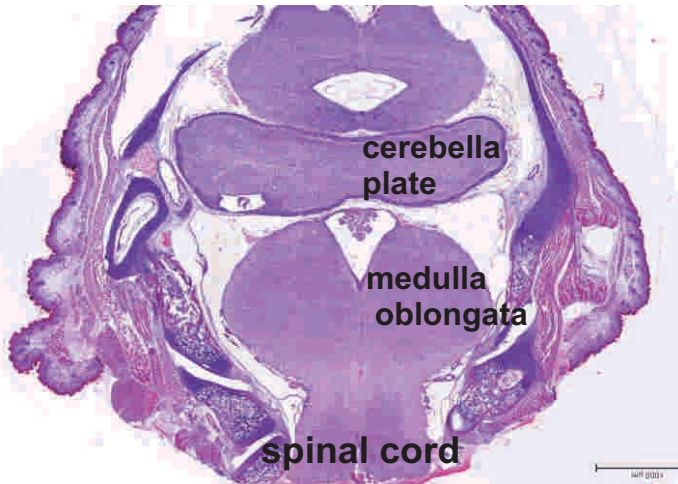
#2 midbrain x2 29671



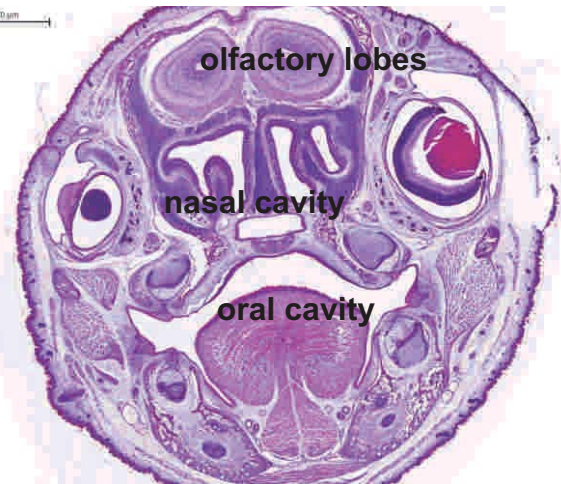
#2 semicircular canal & pina x2 29677



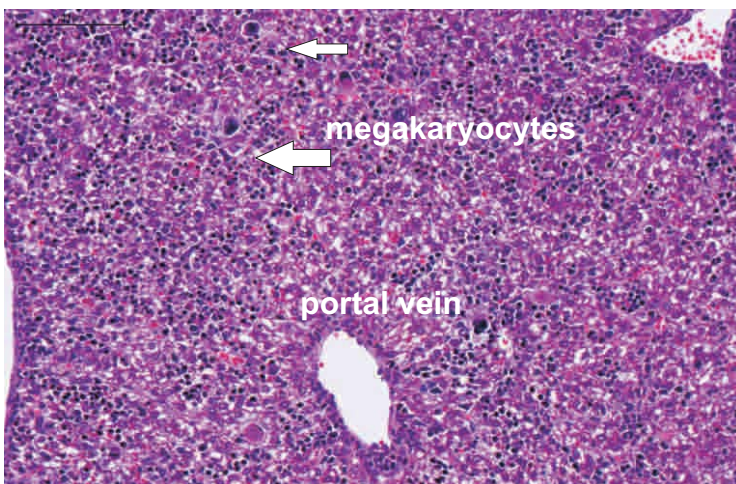
#2 cerebellum x2 29677



#2 hindbrain x2 29678



#2 nasal & oral cavity
x2 29663

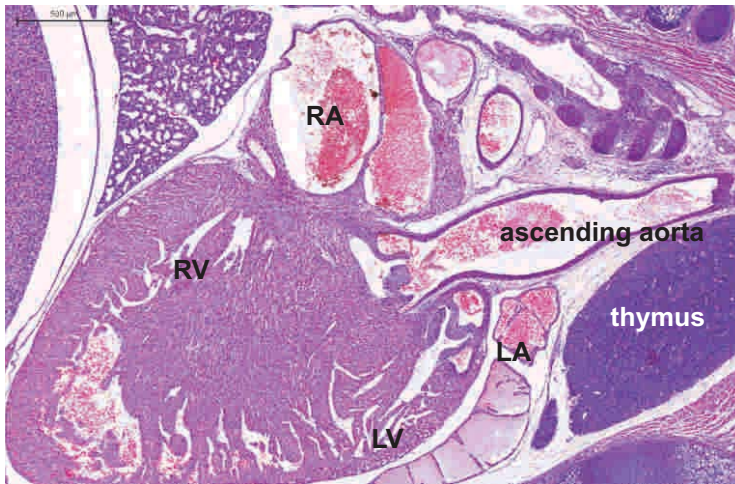


#3 liver x20 29701

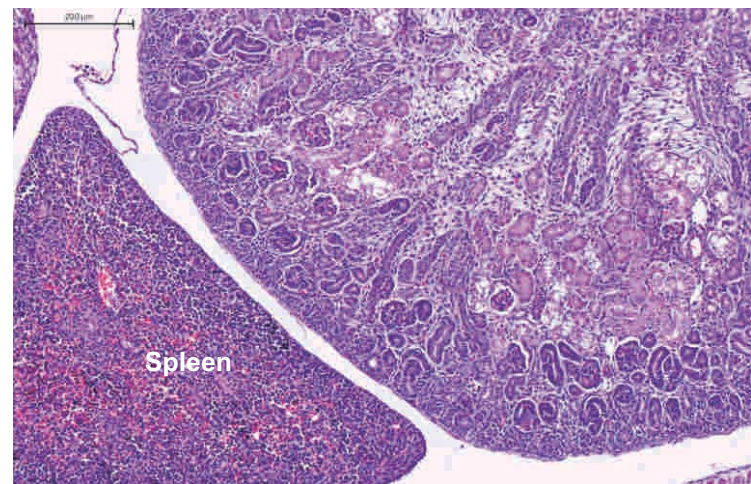


#3 pancreas x20 29685

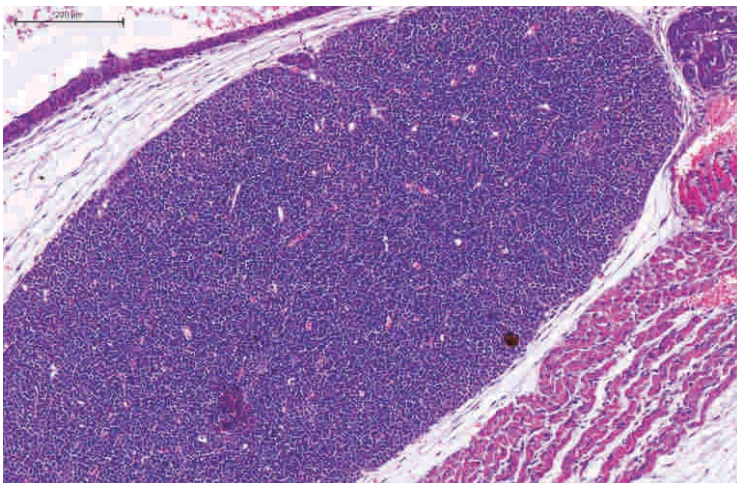
APN13/052MCRI



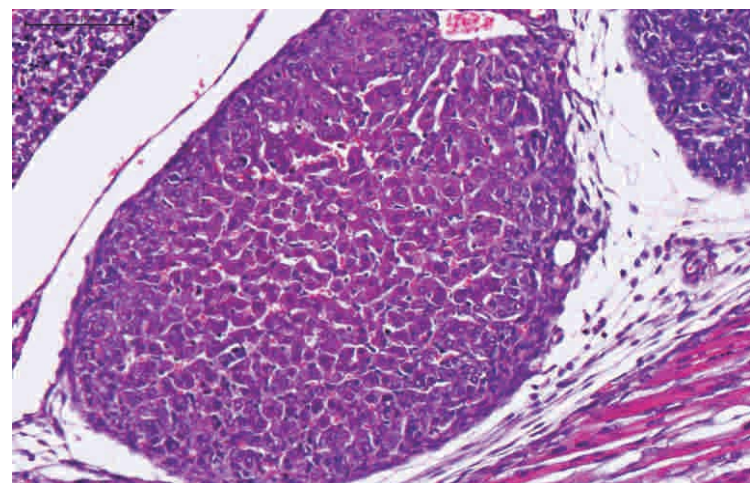
#3 Heart x5 29689



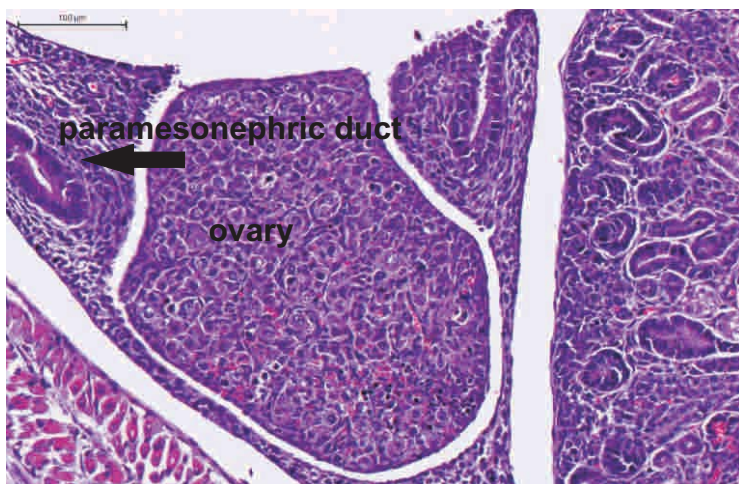
#3 Kidney & Spleen x10 29703



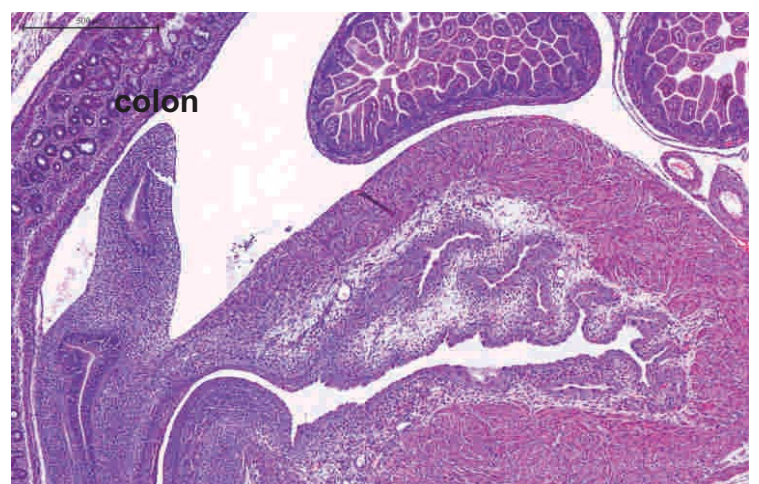
#3 Thymus x10 29687



#3 Adrenal gland x20

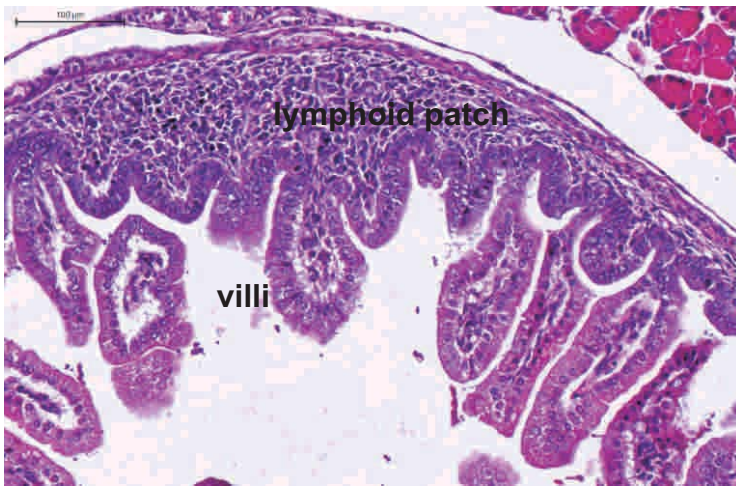


#3 ovary with
typical "dotted" morphology x20 29687

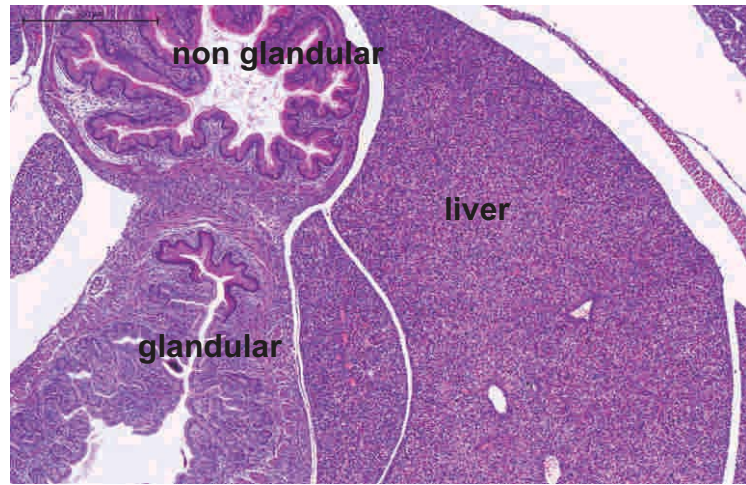


#3 bladder & colon x5 29681

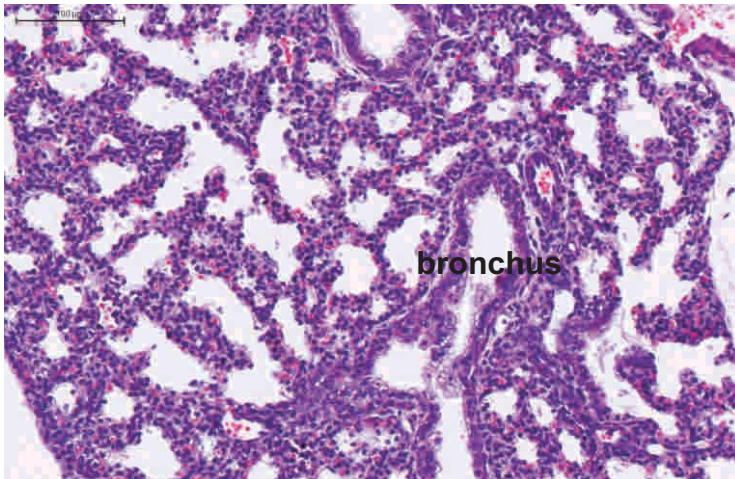
APN13/052MCRI



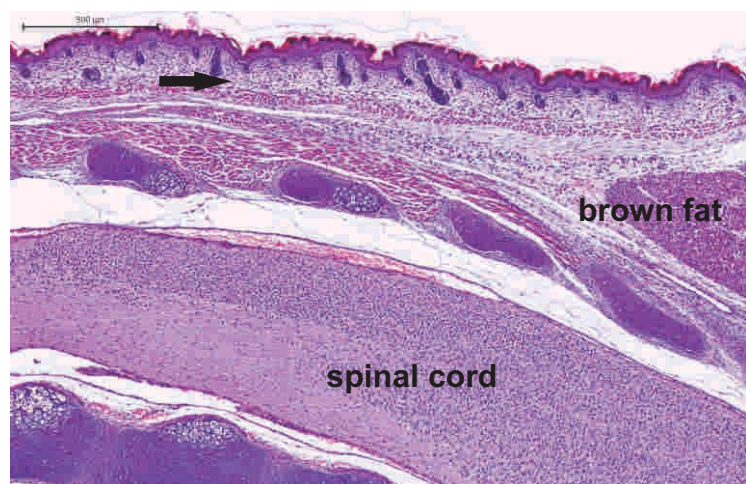
#3 small intestine x20 29693



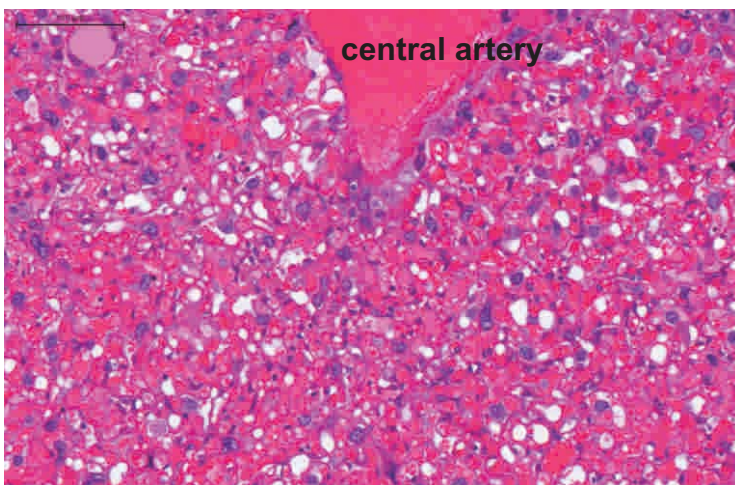
#3 stomach x5 29701



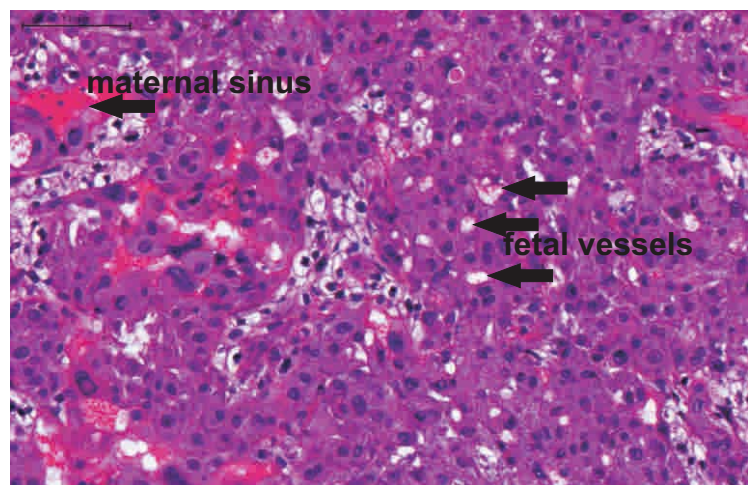
#3 lung x20 29701



#3 skin & brown fat x5 29693

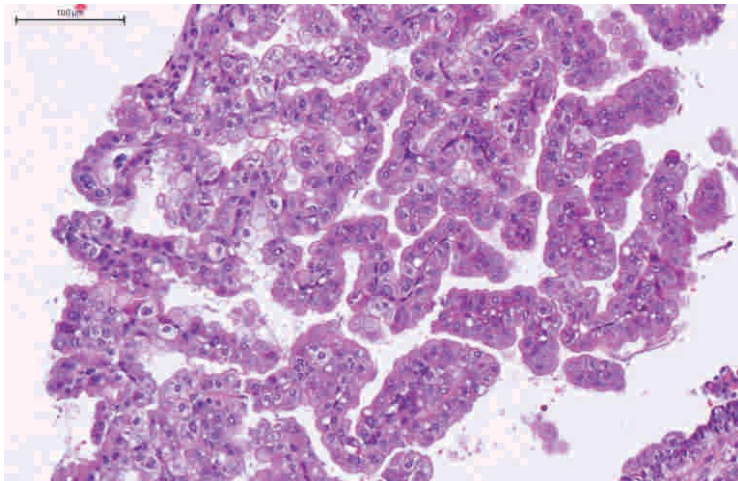


#3 placenta-decidua x20 29701

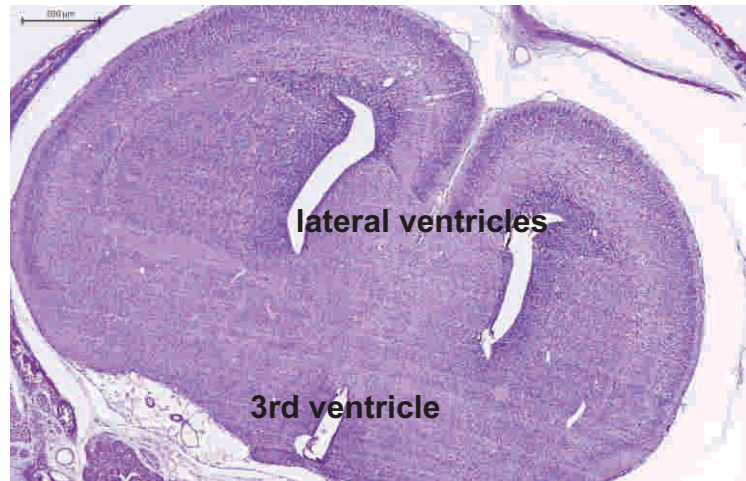


#3 placenta-labyrinth x20 29681

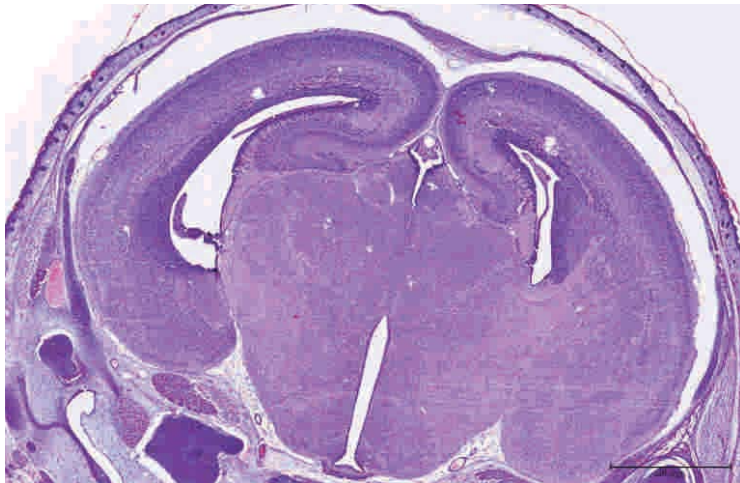
APN13/052MCRI



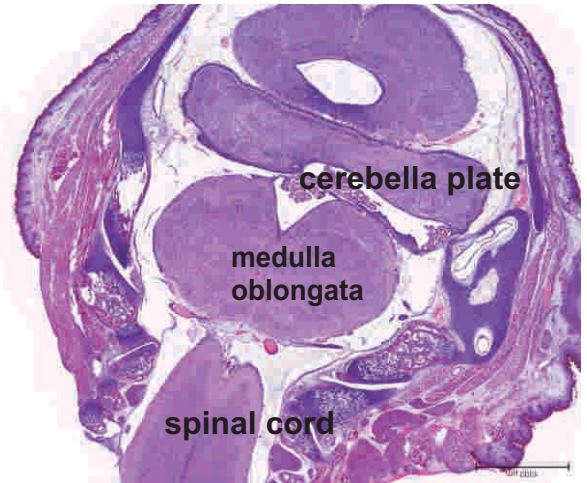
#3 yolk sac x20 29701



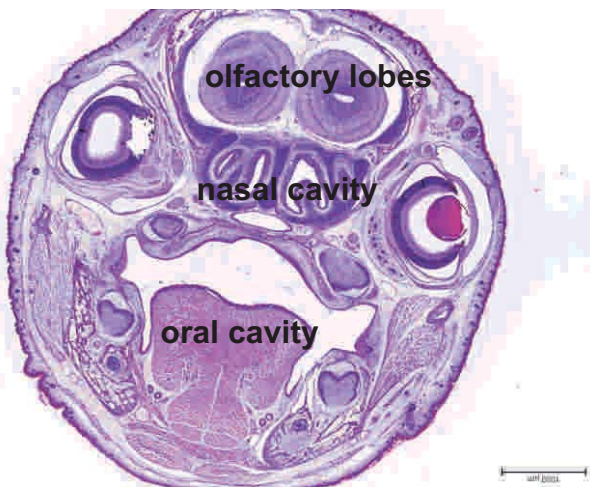
#3 forebrain x3 29696



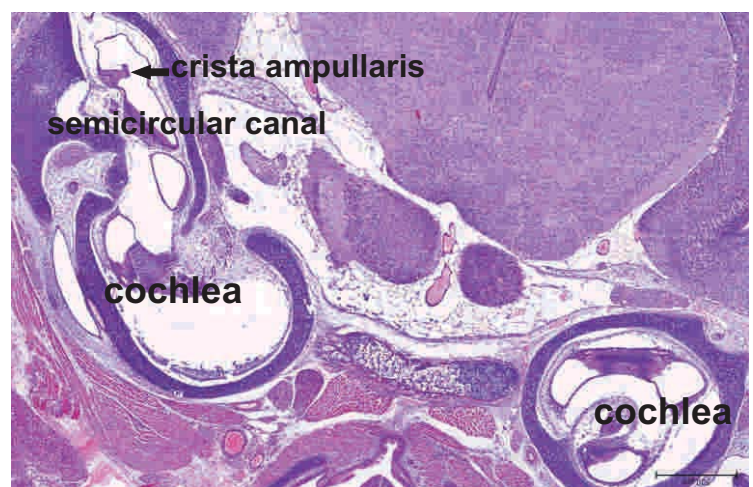
#3 midbrain x2 29702



#3 hindbrain x2 29714

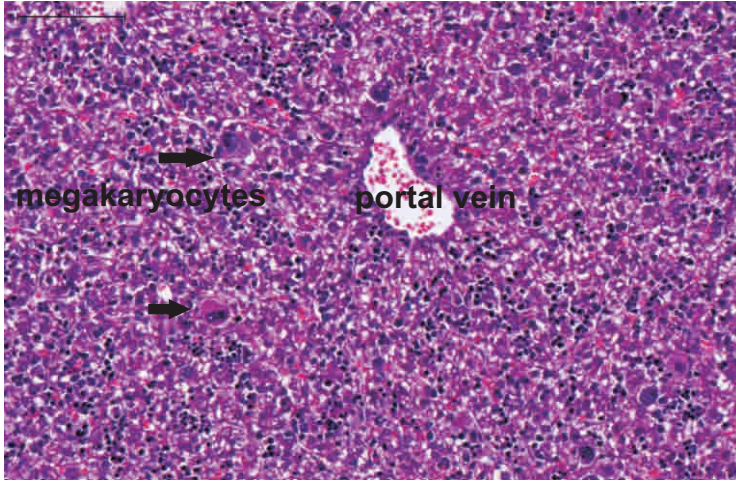


#3 Head(rostral) x2 29690

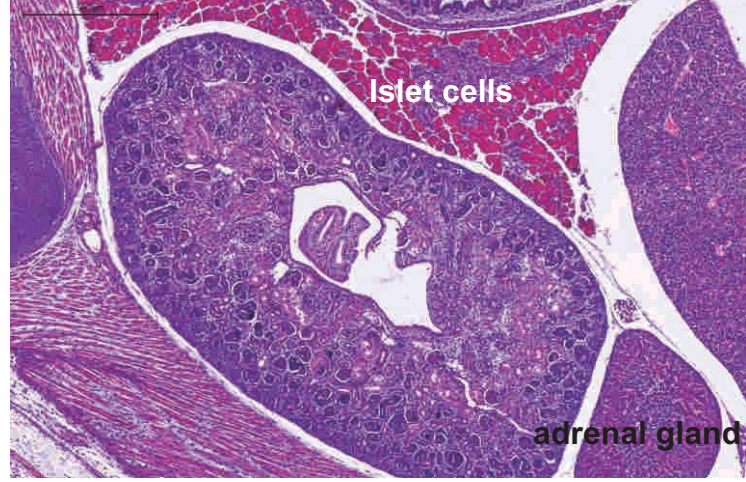


#3 inner ear x3 29706

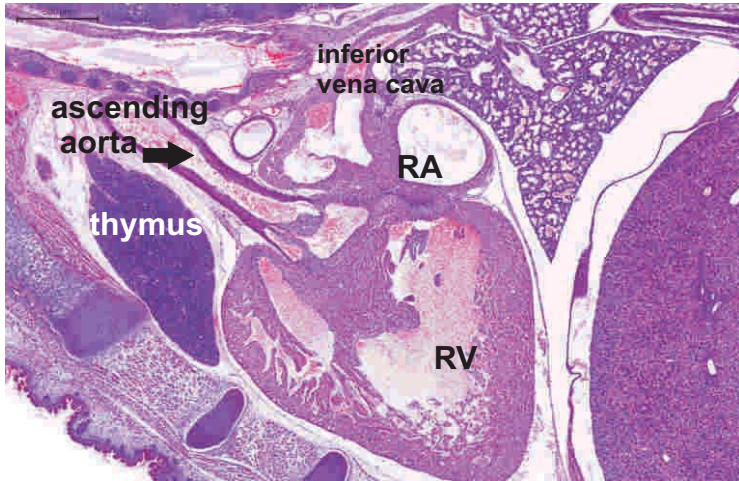
APN13/052MCRI



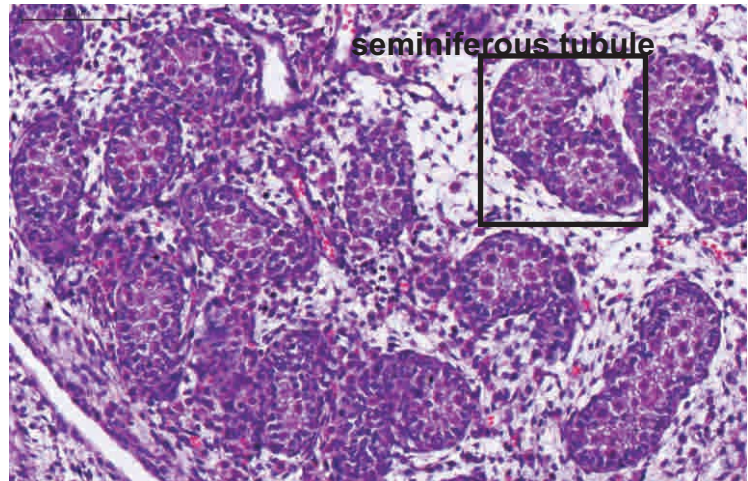
#4 Liver x20 29715



#4 kidney, adrenal gland
& pancreas x5 29715



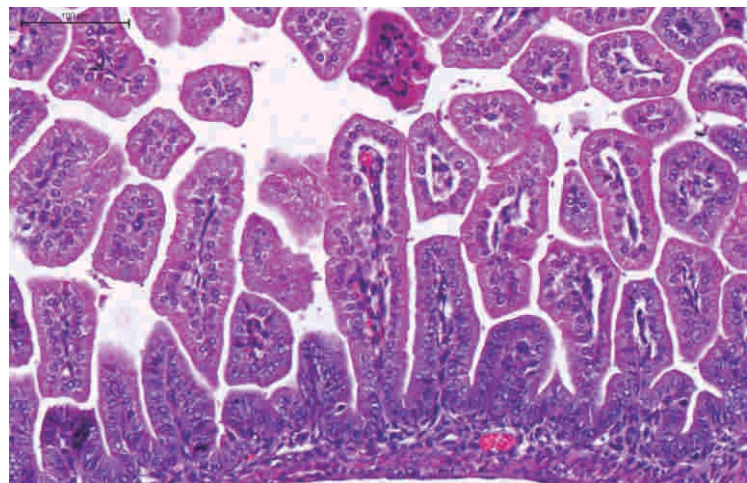
#4 Heart x2 29725



#4 Testis x20 29715

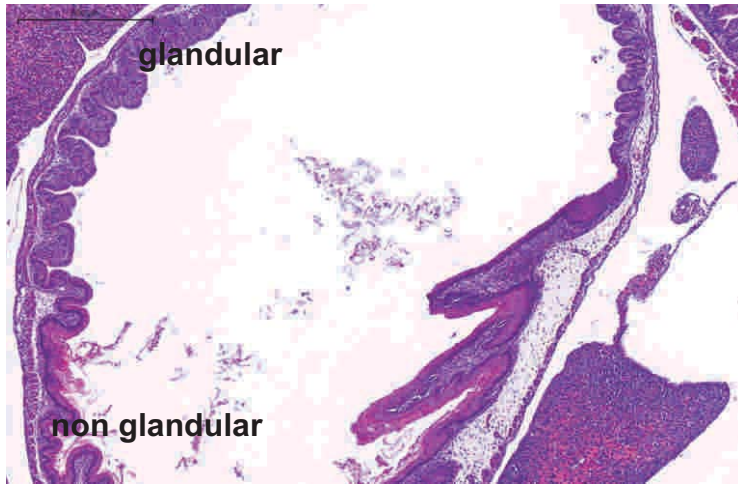


#4 Bladder & colon x5 29725

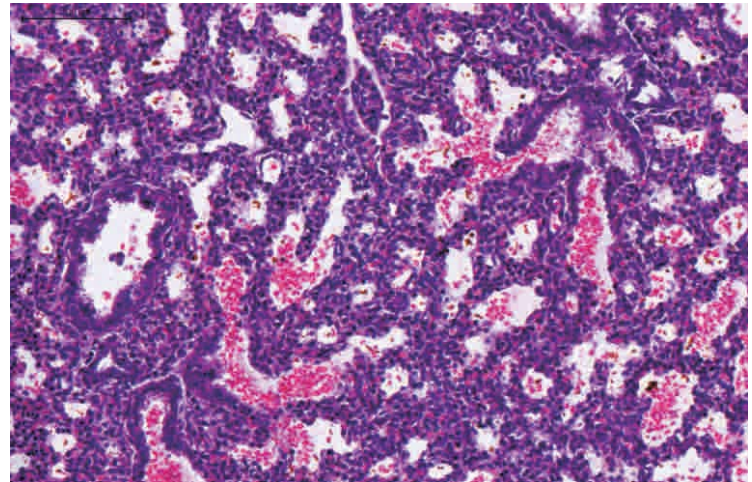


#4 Small intestine x20 29725

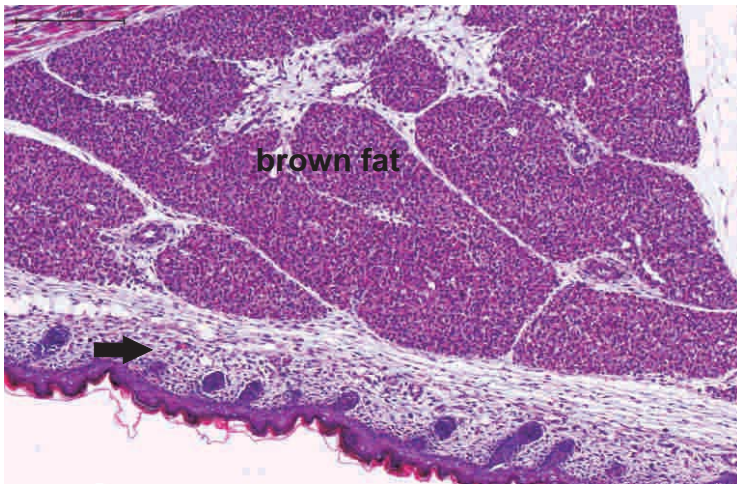
APN13/052MCRI



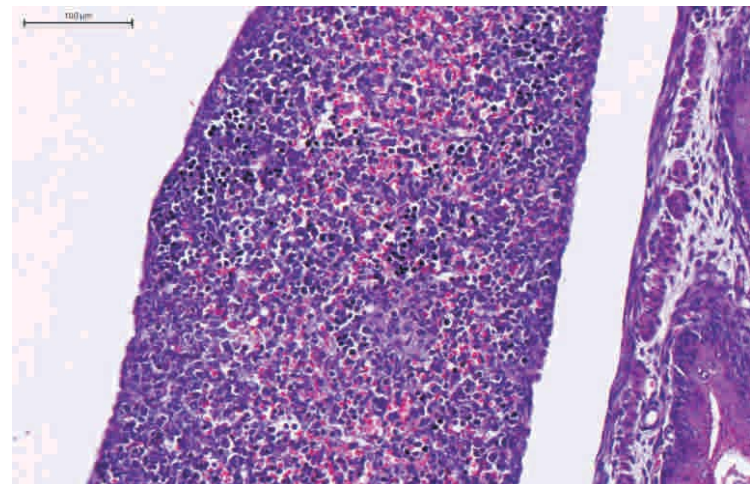
#4 Stomach x5 29725



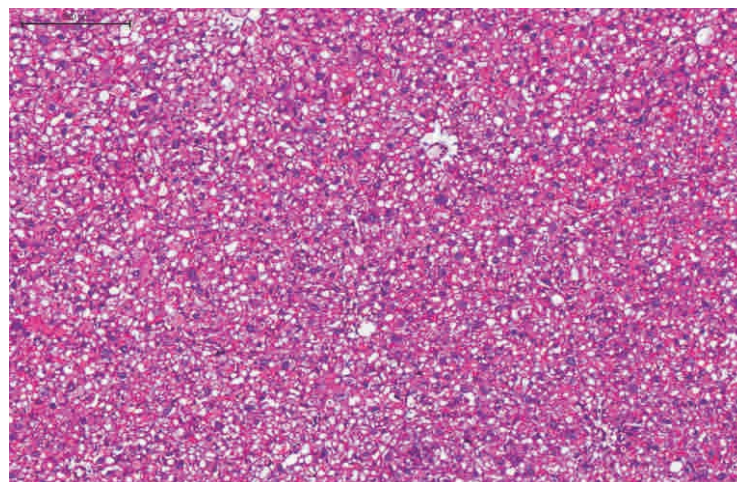
#4 lung x20 29715



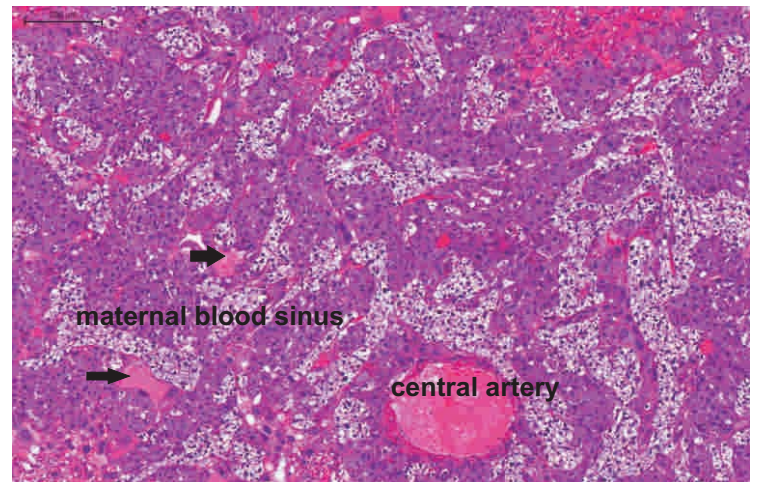
#4 Skin & brown fat x10 29731



#4 Spleen x20 29731

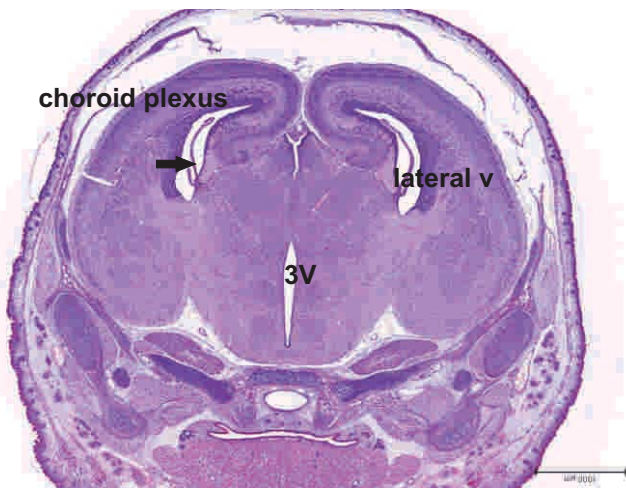


#4 Placenta- decidua x10 29731

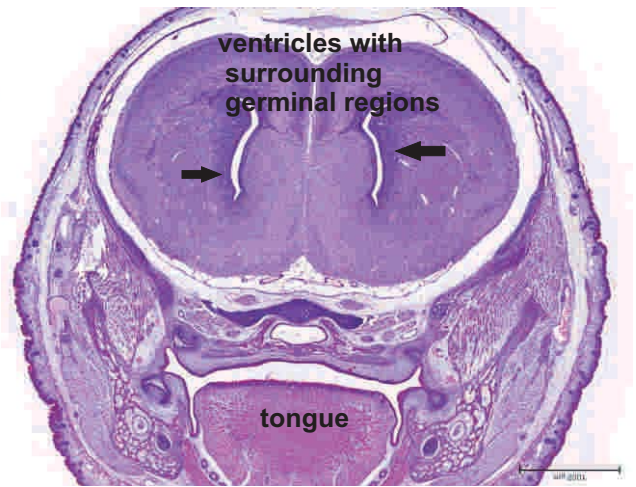


#4 Placenta-labyrinth x7 29725

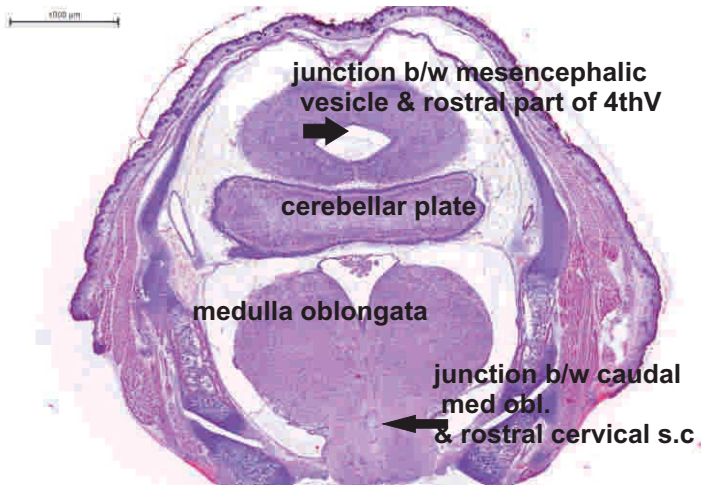
APN13/052MCRI



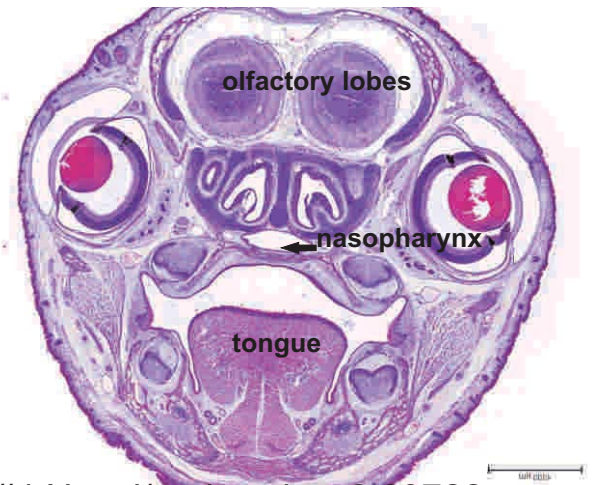
#4 Midbrain x2 29732



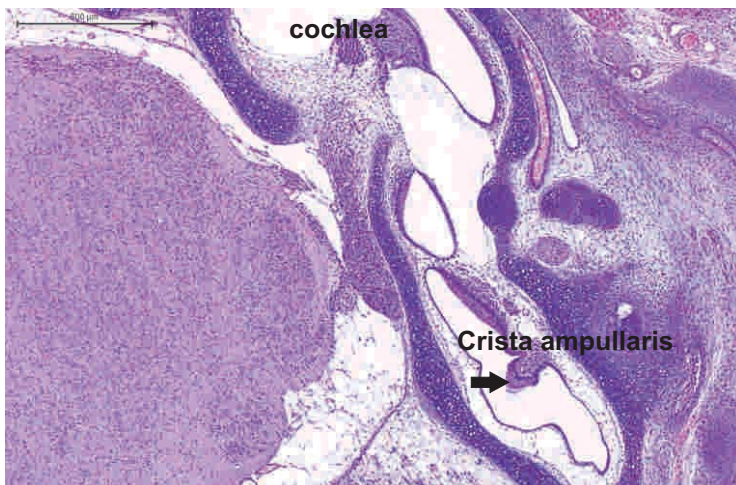
#4 Forebrain x2 29726



#4 hindbrain x2 29747



#4 Nasal/oral cavity x2 29722



#4 Inner ear x10 29740