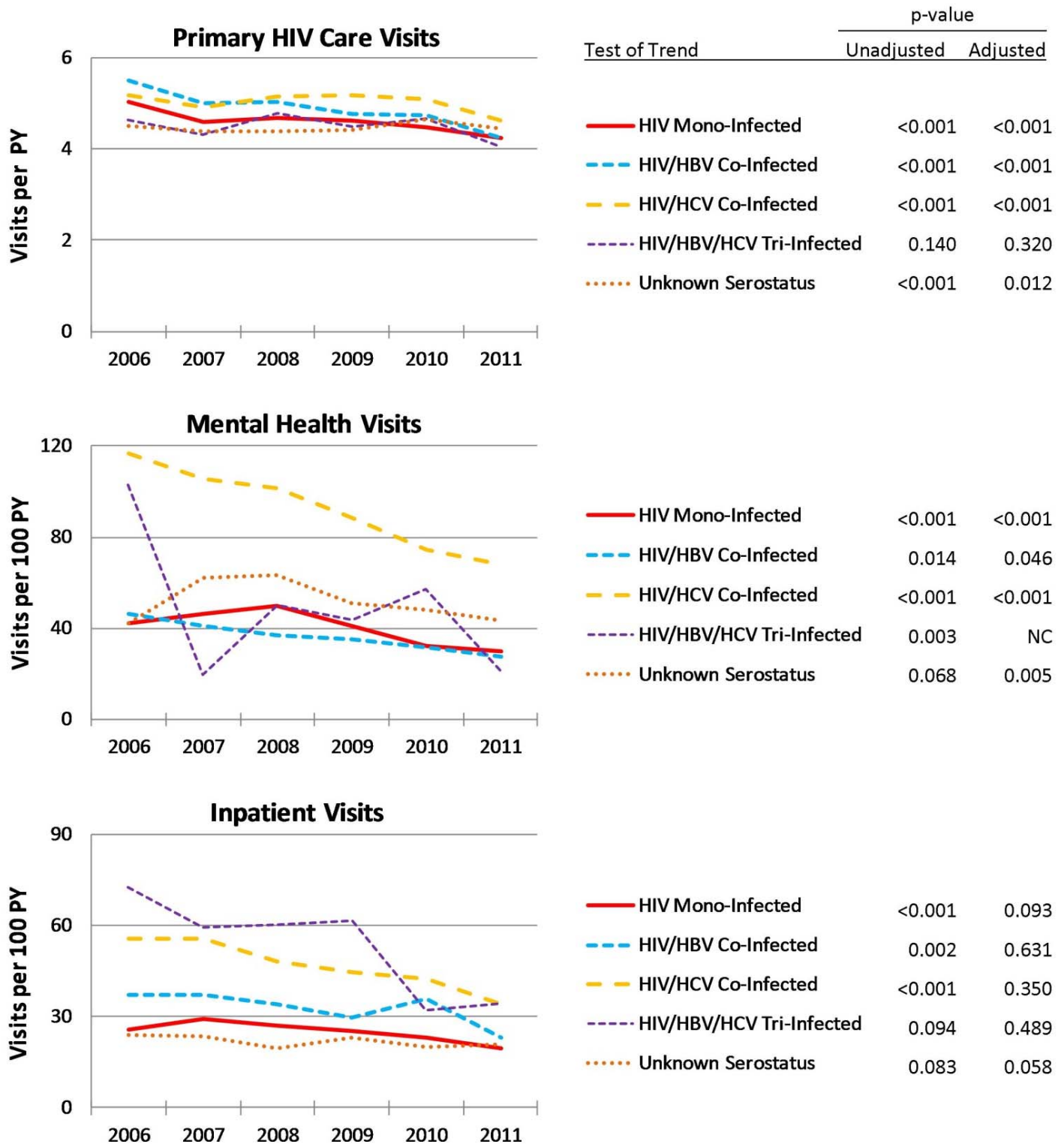


Supplemental Digital Content Figure 1. Healthcare Utilization Rates by Hepatitis Serostatus.



Rates are standardized as hospitalizations per person-year of follow-up for primary HIV care visits and per 100 person-years of follow-up for mental health and inpatient visits. Tests of trend were performed using negative binomial regression with categorical calendar year indicators to detect differences in utilization between start of study in 2006 and end of study in 2011. "NC" indicates that model was non-convergent due to the small number of events in the HIV/HBV/HCV tri-infected group.

**Supplemental Digital Content Table 1.** Healthcare Utilization Rates by Hepatitis Serostatus.

Hepatitis Serostatus	Utilization Rate (Standard Error)						
	2006	2007	2008	2009	2010	2011	Overall
<b>HIV Primary Care (Visits/PY)</b>							
HIV mono-infection	5.03 (0.06) [4500]	4.60 (0.06) [4612]	4.69 (0.05) [5038]	4.63 (0.05) [5435]	4.48 (0.05) [5956]	4.23 (0.05) [6010]	4.59 (0.03) [9146]
HIV/HBV co-infection	5.51 (0.30) [235]	4.99 (0.26) [292]	5.02 (0.24) [323]	4.76 (0.23) [346]	4.74 (0.22) [388]	4.23 (0.20) [385]	4.82 (0.12) [636]
HIV/HCV co-infection	5.18 (0.13) [1110]	4.90 (0.12) [1251]	5.14 (0.11) [1380]	5.18 (0.11) [1468]	5.10 (0.11) [1512]	4.63 (0.10) [1430]	5.02 (0.06) [2445]
HIV/HBV/HCV tri-infection	4.63 (0.36) [66]	4.32 (0.33) [77]	4.79 (0.33) [85]	4.48 (0.32) [84]	4.68 (0.32) [88]	4.06 (0.30) [80]	4.49 (0.23) [150]
Unknown serostatus	4.50 (0.08) [2000]	4.39 (0.09) [1740]	4.37 (0.10) [1540]	4.43 (0.10) [1464]	4.66 (0.10) [1704]	4.45 (0.09) [2110]	4.47 (0.05) [4074]
<b>Mental Health (Visits/100 PY)</b>							
HIV mono-infection	42.15 (2.53) [4500]	46.26 (2.61) [4612]	50.04 (2.61) [5038]	40.72 (2.27) [5435]	32.33 (1.93) [5956]	29.76 (1.82) [6010]	39.51 (1.60) [9146]
HIV/HBV co-infection	46.36 (9.53) [235]	41.11 (8.10) [292]	36.82 (7.22) [323]	35.29 (6.83) [346]	31.40 (6.13) [388]	27.26 (5.61) [385]	35.33 (5.58) [636]
HIV/HCV co-infection	116.74 (9.43) [1110]	105.33 (8.39) [1251]	101.56 (7.89) [1380]	88.22 (7.07) [1468]	74.36 (6.36) [1512]	67.72 (6.19) [1430]	90.57 (4.46) [2445]
HIV/HBV/HCV tri-infection	102.9 (26.78) [66]	19.34 (10.76) [77]	50.20 (16.52) [85]	43.52 (15.53) [84]	57.26 (17.20) [88]	21.49 (10.85) [80]	47.7 (12.76) [150]
Unknown serostatus	42.29 (5.85) [2000]	61.96 (7.78) [1740]	63.26 (8.20) [1540]	51.21 (7.59) [1464]	48.31 (7.00) [1704]	43.63 (6.14) [2110]	51.16 (2.96) [4074]
<b>Inpatient (Visits/100 PY)</b>							
HIV mono-infection	25.53 (1.54) [4500]	29.34 (1.63) [4612]	26.86 (1.50) [5038]	25.49 (1.40) [5435]	22.94 (1.27) [5956]	19.76 (1.16) [6010]	24.69 (0.80) [9146]
HIV/HBV co-infection	37.09 (7.86) [235]	37.34 (7.11) [292]	34.14 (6.41) [323]	29.67 (5.77) [346]	35.93 (6.04) [388]	22.90 (4.74) [385]	32.25 (3.58) [636]
HIV/HCV co-infection	55.46 (4.16) [1110]	55.76 (3.91) [1251]	48.09 (3.48) [1380]	44.65 (3.22) [1468]	42.58 (3.08) [1512]	34.11 (2.81) [1430]	46.08 (2.01) [2445]
HIV/HBV/HCV tri-infection	72.36 (19.20) [66]	59.41 (16.12) [77]	60.24 (15.47) [85]	61.44 (15.78) [84]	32.21 (11.03) [88]	34.13 (11.69) [80]	52.27 (8.43) [150]
Unknown serostatus	24.17 (2.42) [2000]	23.36 (2.61) [1740]	19.69 (2.50) [1540]	22.96 (2.78) [1464]	20.10 (2.47) [1704]	20.90 (2.32) [2110]	21.94 (1.26) [4074]

Mean utilization rate was calculated by dividing the aggregate number of visits by the aggregate person-time for each hepatitis serostatus and year combination. These rates were multiplied by 100 for mental health and inpatient visits. Poisson regression was used to estimate standard errors of the mean, modeling utilization rate as a function of time, stratified by hepatitis serostatus. Standard errors were scaled using square root of Pearson chi-squared-based dispersion.

**Supplemental Digital Content Table 2.** Percentage of Patients Utilizing Healthcare Services, by Hepatitis Serostatus.

**(A) Mental Health**

Hepatitis Serostatus	Percentage of Patients With At Least 1 Mental Health Visit (95% Confidence Interval)						
	2006	2007	2008	2009	2010	2011	Ever
HIV mono-infection	12.4 (11.5-13.4)	12.6 (11.6-13.5)	13.7 (12.7-14.6)	12.7 (11.8-13.5)	11.1 (10.3-11.9)	10.7 (9.9-11.5)	21.2 (20.3-22.0)
HIV/HBV co-infection	12.3 (8.1-16.6)	13.0 (9.1-16.9)	13.9 (10.1-17.7)	13.0 (9.4-16.6)	10.8 (7.7-13.9)	11.9 (8.7-15.2)	21.2 (18.0-24.4)
HIV/HCV co-infection	23.8 (21.3-26.3)	24.1 (21.7-26.4)	25.7 (23.4-28.0)	23.4 (21.2-25.5)	20.6 (18.6-22.7)	20.3 (18.3-22.4)	34.9 (33.0-36.8)
HIV/HBV/HCV tri-infection	22.7 (12.5-32.9)	13.0 (5.4-20.6)	22.4 (13.4-31.3)	16.7 (8.6-24.7)	15.9 (8.2-23.6)	12.5 (5.2-19.8)	30.7 (23.2-38.1)
Unknown serostatus	13.8 (12.2-15.2)	14.2 (12.6-15.9)	14.7 (13.0-16.5)	14.2 (12.4-16.0)	13.1 (11.5-14.8)	12.2 (10.8-13.6)	18.3 (17.1-19.5)

**(B) Inpatient**

Hepatitis Serostatus	Percentage of Patients With At Least 1 Inpatient Visit (95% Confidence Interval)						
	2006	2007	2008	2009	2010	2011	Ever
HIV mono-infection	13.5 (12.5-14.5)	15.0 (13.9-16.0)	14.1 (13.2-15.1)	13.8 (12.9-14.7)	12.7 (11.9-13.6)	11.1 (10.3-11.8)	31.6 (30.6-32.5)
HIV/HBV co-infection	20.8 (15.6-26.0)	17.5 (13.1-21.8)	18.6 (14.3-22.8)	15.3 (11.5-19.1)	18.8 (14.9-22.7)	14.3 (10.8-17.8)	37.7 (34.0-41.5)
HIV/HCV co-infection	25.5 (22.9-28.1)	28.4 (25.9-30.9)	25.4 (23.1-27.7)	22.3 (20.2-24.5)	22.0 (19.9-24.0)	18.2 (16.2-20.2)	46.2 (44.2-48.2)
HIV/HBV/HCV tri-infection	28.8 (17.8-39.8)	29.9 (19.6-40.2)	25.9 (18.8-38.3)	28.6 (18.8-38.3)	22.7 (13.9-31.6)	18.8 (10.1-27.4)	49.3 (41.2-57.4)
Unknown serostatus	14.4 (12.9-16.0)	12.7 (11.1-14.3)	11.7 (10.1-13.3)	11.9 (10.2-13.5)	11.0 (9.5-12.4)	11.2 (9.8-12.5)	24.6 (23.3-25.9)

All study participants had at least one HIV primary care visit during each year of observation. For each hepatitis serostatus group, annual percentages were calculated by dividing the number of participants with at least one visit by the total number of participants categorized into that hepatitis serostatus group during the calendar year. For each hepatitis serostatus group, percentage of patients ever utilizing each healthcare service was calculated by dividing the number of participants with at least one visit while contributing person-time to that hepatitis serostatus group by the total number of participants ever categorized in that hepatitis serostatus group.