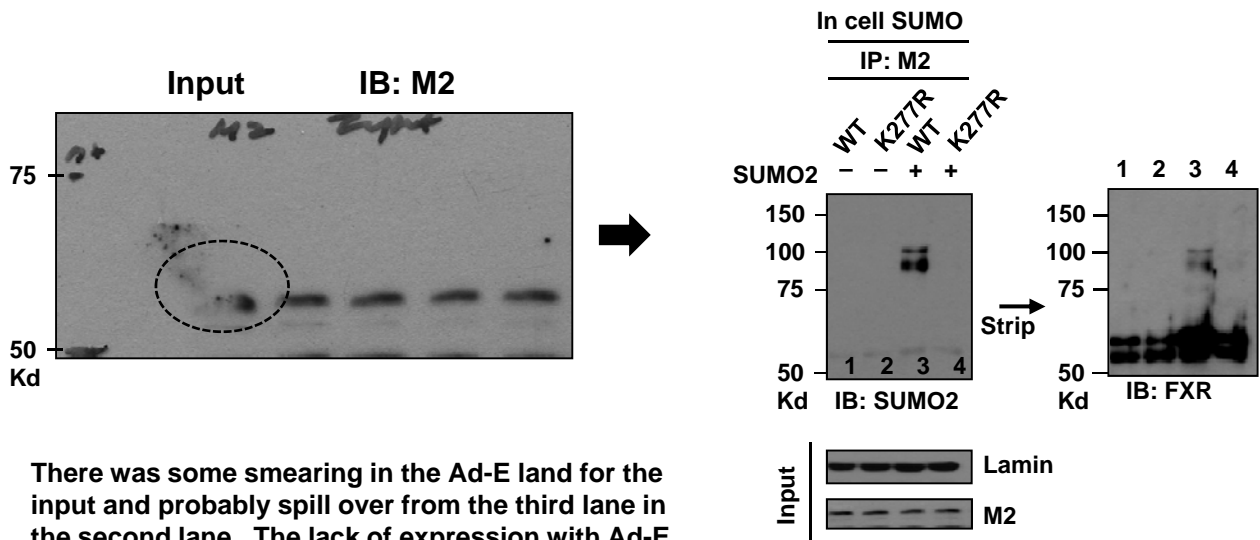


3I



There was some smearing in the Ad-E land for the input and probably spill over from the third lane in the second lane. The lack of expression with Ad-E has been shown in multiple experiments, including others presented in the paper, see Fig. 6 F and G. Since the Ad-E lanes were not essential for the experiment in Fig. 3I, we have decided to delete the Ad-E lanes in the figure.