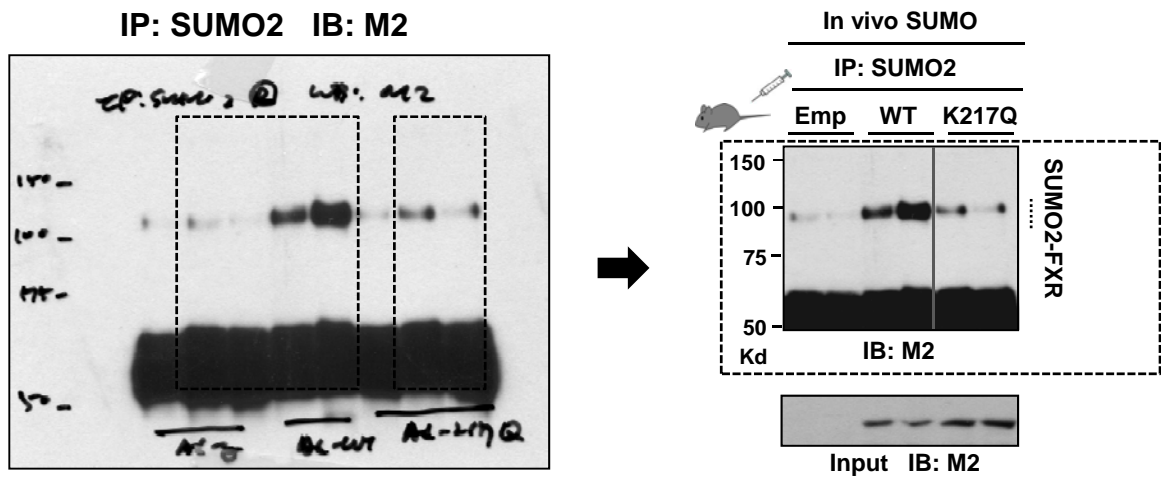


5C



(IP with SUMO2 Ab and then, IB with M2 to detect SUMO2 modification), Ad-FXR WT was done in duplicate while Ad-Empty and Ad-K217Q were done in triplicate. The idea of splicing was for consistency to show duplicates of each. The two most similar lanes for K217Q were selected which required the splice. Note that the bands in the selected lanes for K217Q are darker than the one deleted which therefore understates, if anything, the conclusion that the SUMOylation was decreased in the K217Q sample.