

Figure S1 - Histopathology

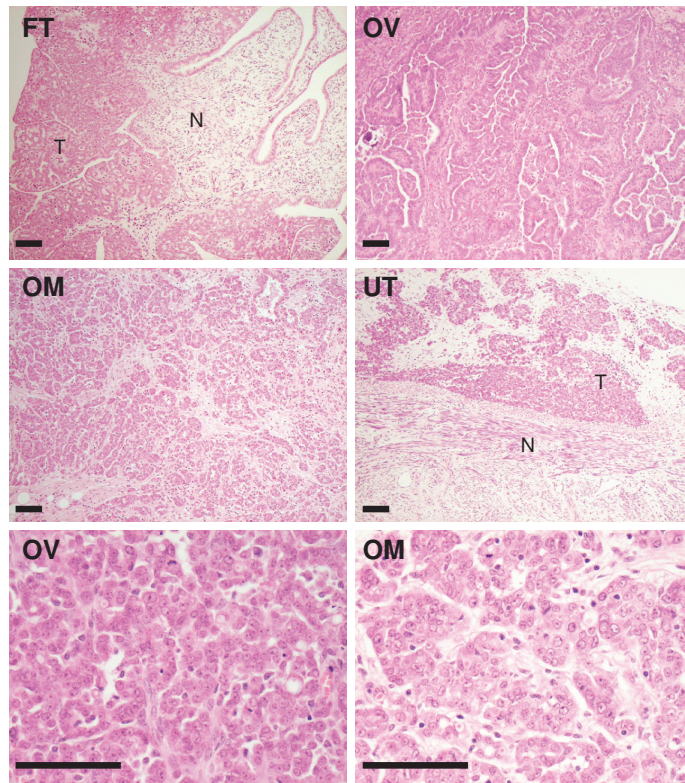


Figure 1: **Histopathology for case 8** showing uniform cellular architecture of high-grade serous ovarian carcinoma (HGSOC). H&E stained sections from interval debulking surgery specimens are shown, including right distal fallopian tube, right ovarian mass, omental metastasis and a serosal deposit on the uterus. The fallopian tube shows an invasive high-grade serous tubal carcinoma which is the presumed primary site for this case. A representative image of the omental metastases is shown as similar morphology and growth pattern was seen in the 3 blocks sampled. High-power fields are shown at bottom for ovarian and omental metastases showing conserved cellular architecture. FT, fallopian tube; OV, ovarian mass; OM, omental metastasis; UT, metastasis to uterine serosa; T, tumor; N, normal. Bars indicate 100 μ m.