

## Figure S17 - Tree shapes and evolutionary patterns in resistant and sensitive cases

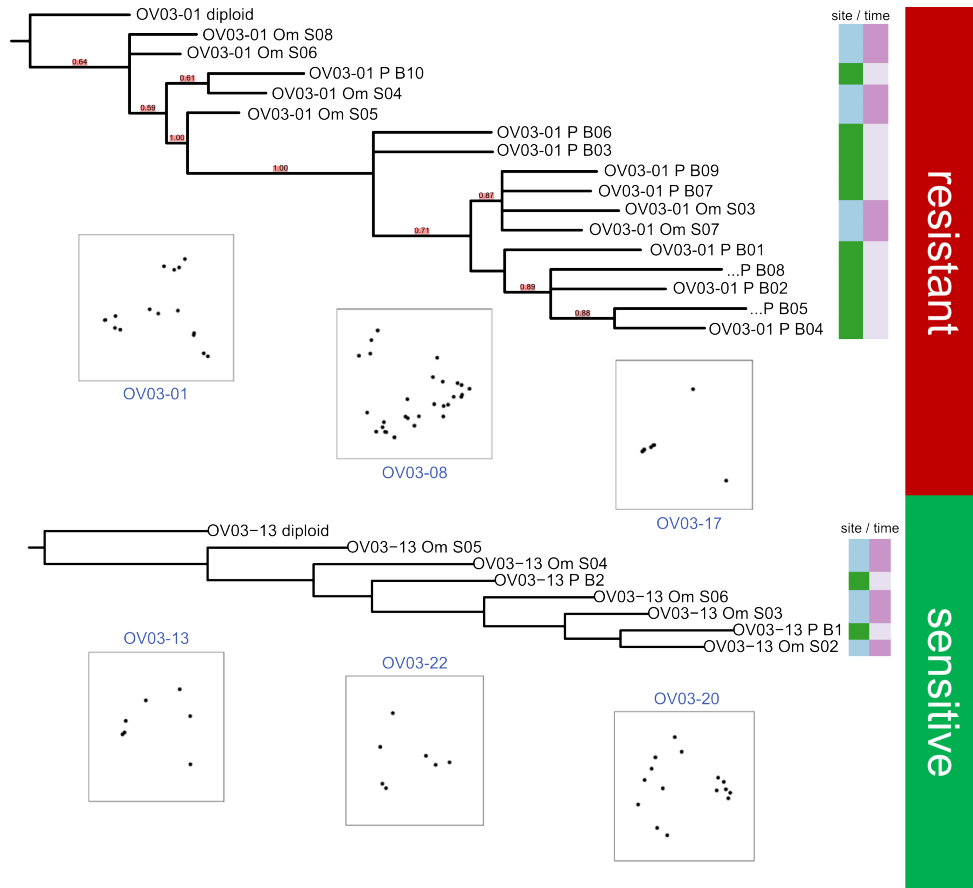


Figure 17: **Tree shapes and evolutionary patterns in resistant and sensitive cases.** Heavy clonal expansion, visible in clear clusters of samples in the scatterplots and high confidence support at multi-furcating internal branches (top), together with many changes in the course of chemotherapy (TD index, not shown) indicate poor outcome. In contrast, neutral-like evolutionary changes, indicated by constant branch lengths and few clonal expansions are indicative of better prognosis (bottom).