

Supplemental Table S1.

Patient and Tumor Characteristics of the Tissue Microarrays.

Neoplasms	Subtype	n	Age median (range)	Gender M / F	pT*(n)	pN*(n)
Lung	Adenocarcinoma	5	68 (43-76)	1 / 4	pT1(1), pT2(4)	pN0(4), pN2(1)
Lung	Squamous cell carcinoma	5	66 (43-75)	2 / 3	pT1(1), pT2 (3), pT3 (1)	pN0(4), pN1(1)
Esophagus	Squamous cell carcinoma	5	75 (50-77)	5 / 0	pT3(5)	pN0(2), pN1(2), pN2(1)
Stomach	Adenocarcinoma	5	61 (54-67)	2 / 3	pT2(4), pT4(1)	pN0(2), pN1(2), pN2(1)
Colon	Adenocarcinoma	5	64 (57-77)	3 / 2	pT2(2), pT3(3)	pN0(3), pN2(2)
Liver	Hepatocellular carcinoma	5	58 (52-71)	4 / 1	pT1(2), pT3(2)	pN0(2),
Liver	Intrahepatic cholangiocarcinoma	5	59 (46-67)	4 / 1	pT1(2), pT2(2), pT4(1)	pN0(4), pN1(1)
Bile duct	Adenocarcinoma	5	64 (50-72)	3 / 2	pT1(1), pT3(3), pT4(1)	pN1(3), pN2(2)

Pancreas	Adenocarcinoma	5	54 (51-64)	3 / 2	pT3(1), pT4(4)	pN0(1), pN1(1), pN2(3)
Prostate	Adenocarcinoma	5	70 (53-74)	5 / 0	pT2a(2), pT2c(2), pT3a(1)	pN0(5)
Kidney	Renal cell carcinoma	5	52 (43-66)	1 / 4	pT1a(3), pT2(2)	pN0(2)
Renal pelvis	Urothelial carcinoma	5	73 (57-87)	4 / 1	pT3(3), pT4(2)	pN0(4), pN1(1)
Breast	Ductal carcinoma	5	57 (43-59)	0 / 5	pT2(4), pT3(1)	pN0(1), pN1(3)
Uterine cervix	Squamous cell carcinoma	5	34 (31-54)	0 / 5	pT1b(4), pT2b	pN0(4), pN1(1)
Uterine corpus	Adenocarcinoma	5	50 (45-68)	0 / 5	pT1a(4), pT2(1)	pN0(2), pN1(1)
Thyroid	Papillary carcinoma	5	54 (42-70)	1 / 4	pT2(1), pT3(1), pT4a(2)	pN1a(3), pN1b(1)
Thyroid	Follicular carcinoma	3	70 (56-71)	1 / 2	pT2(3)	
Tongue	Squamous cell carcinoma	5	66 (48-86)	2 / 3	pT1(1), pT2(1), pT3(1), pT4(2)	pN2(1)
Larynx	Squamous cell carcinoma	5	60 (54-79)	5 / 0	pT3(2), pT4(3)	pN0(2), pN1(1), pN2c(1)
Skin	Squamous cell carcinoma	5	59 (15-92)	3 / 2	pT2(5)	

\* International Union Against Cancer (UICC). TNM Classification of Malignant Tumours, 7th ed. Sobin LH, Gospodarowicz MK, Wittekind Ch., eds. New York: Wiley; 2010.

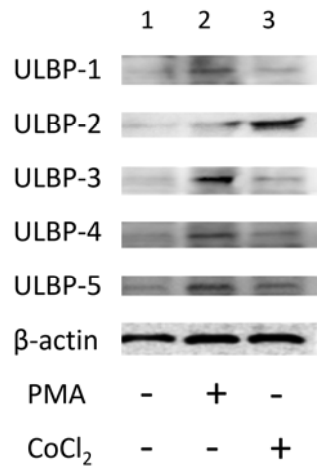


Figure S1

Western blot analysis of NKG2D ligands in HeLa cells. Lane 1: control, Lane 2: 40 ng/mL phorbol myristate acetate (PMA), Lane 3: 75 ng/mL cobalt chloride (CoCl<sub>2</sub>).

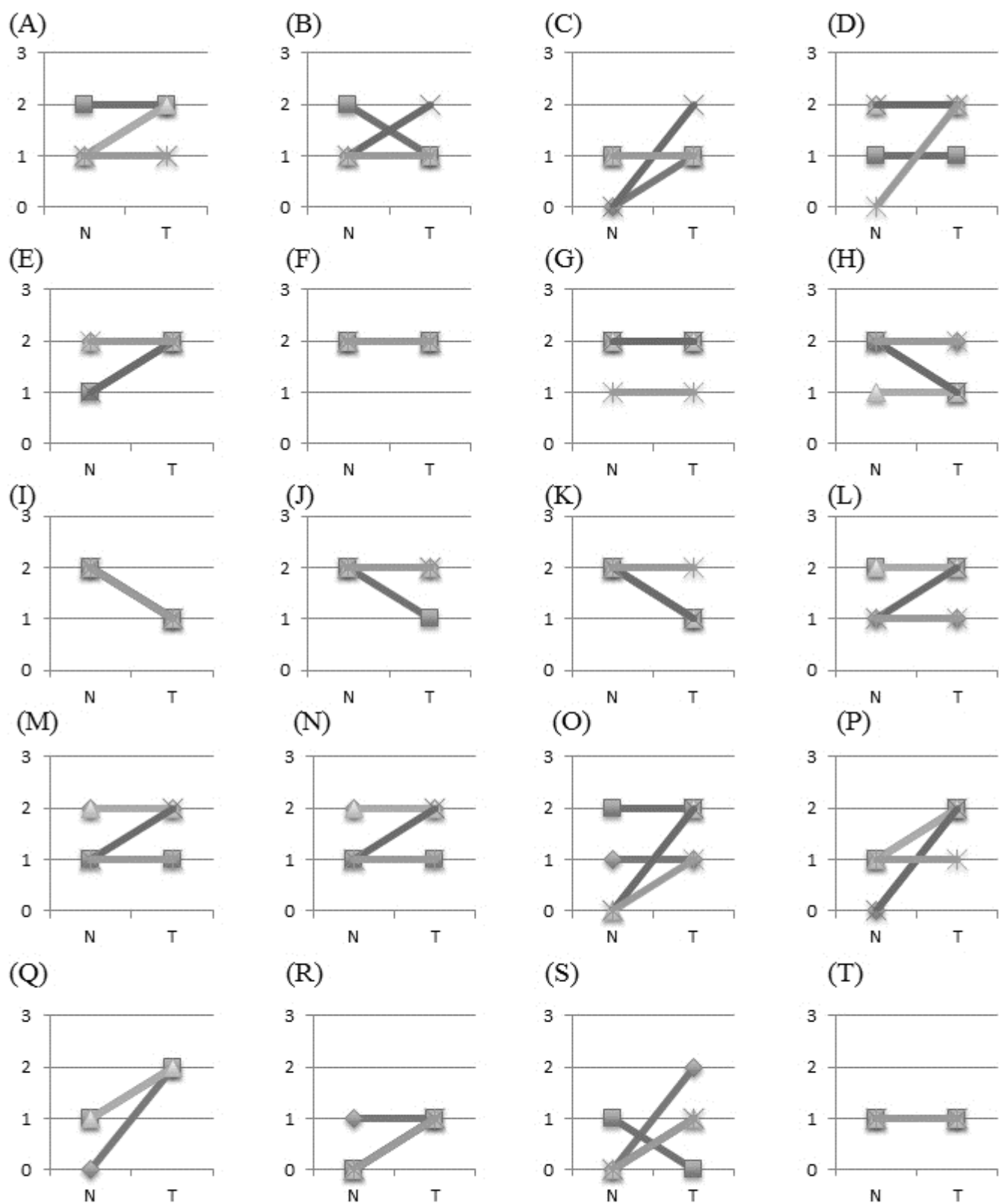


Figure S2-1

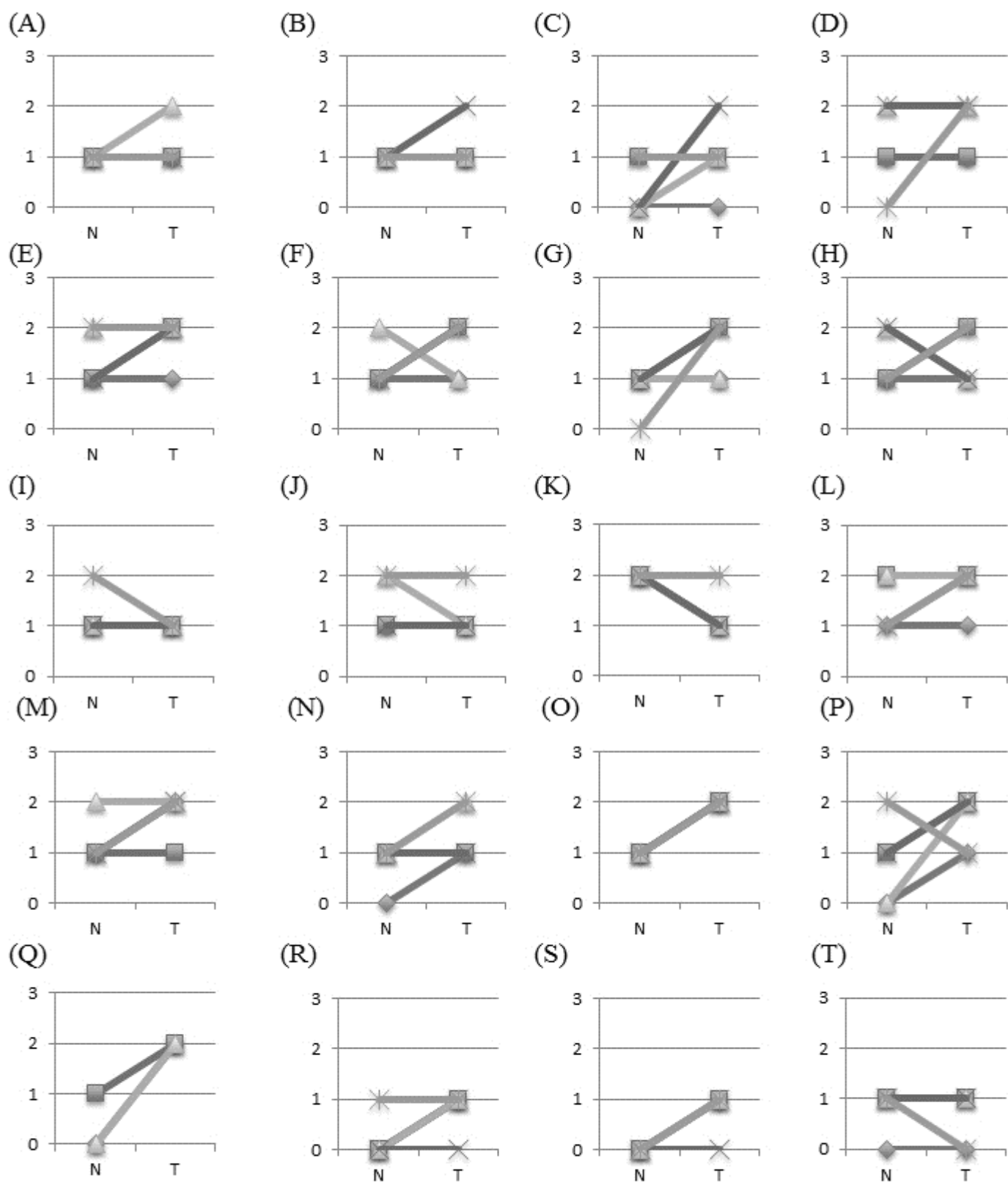


Figure S2-2

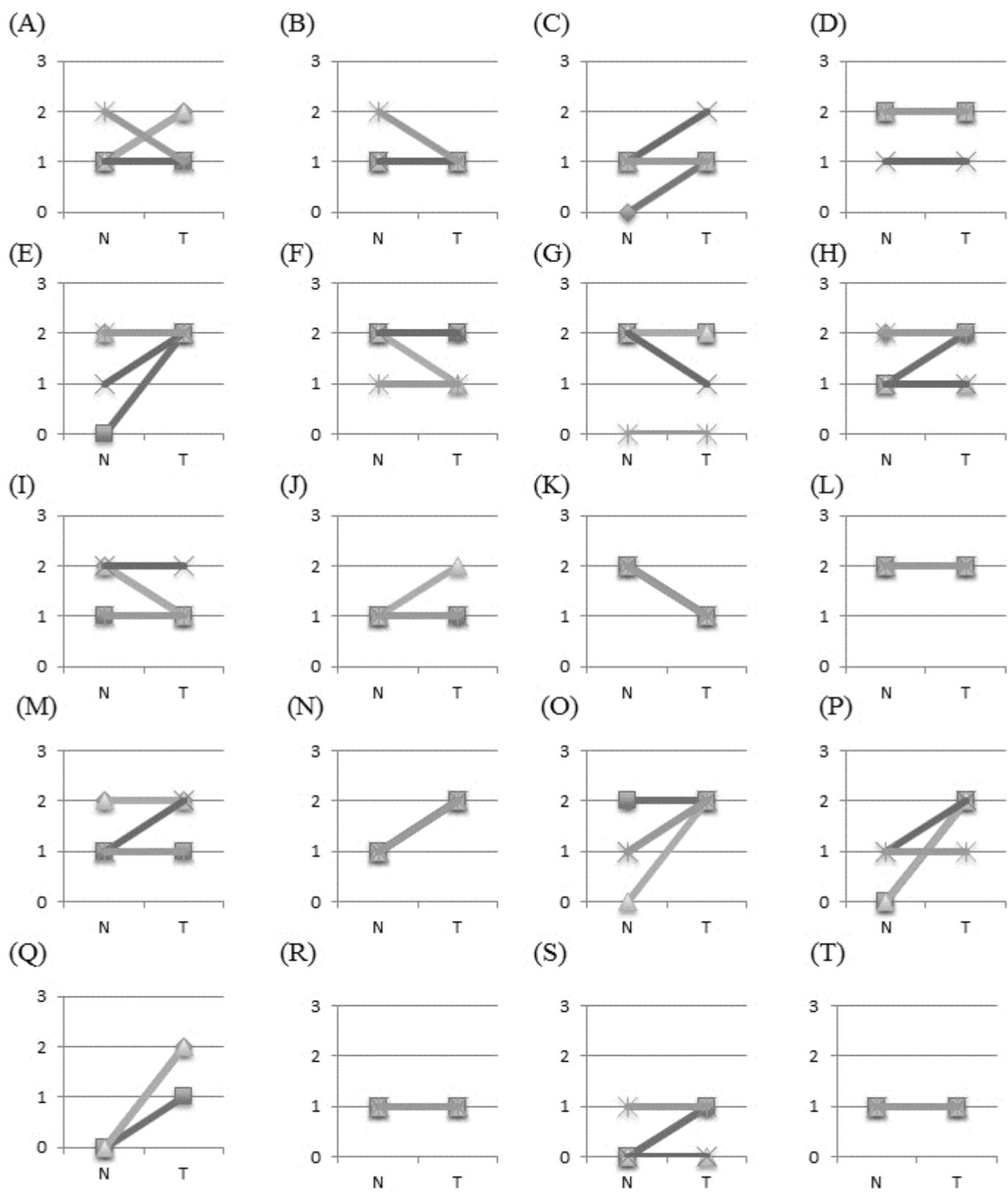


Figure S2-3

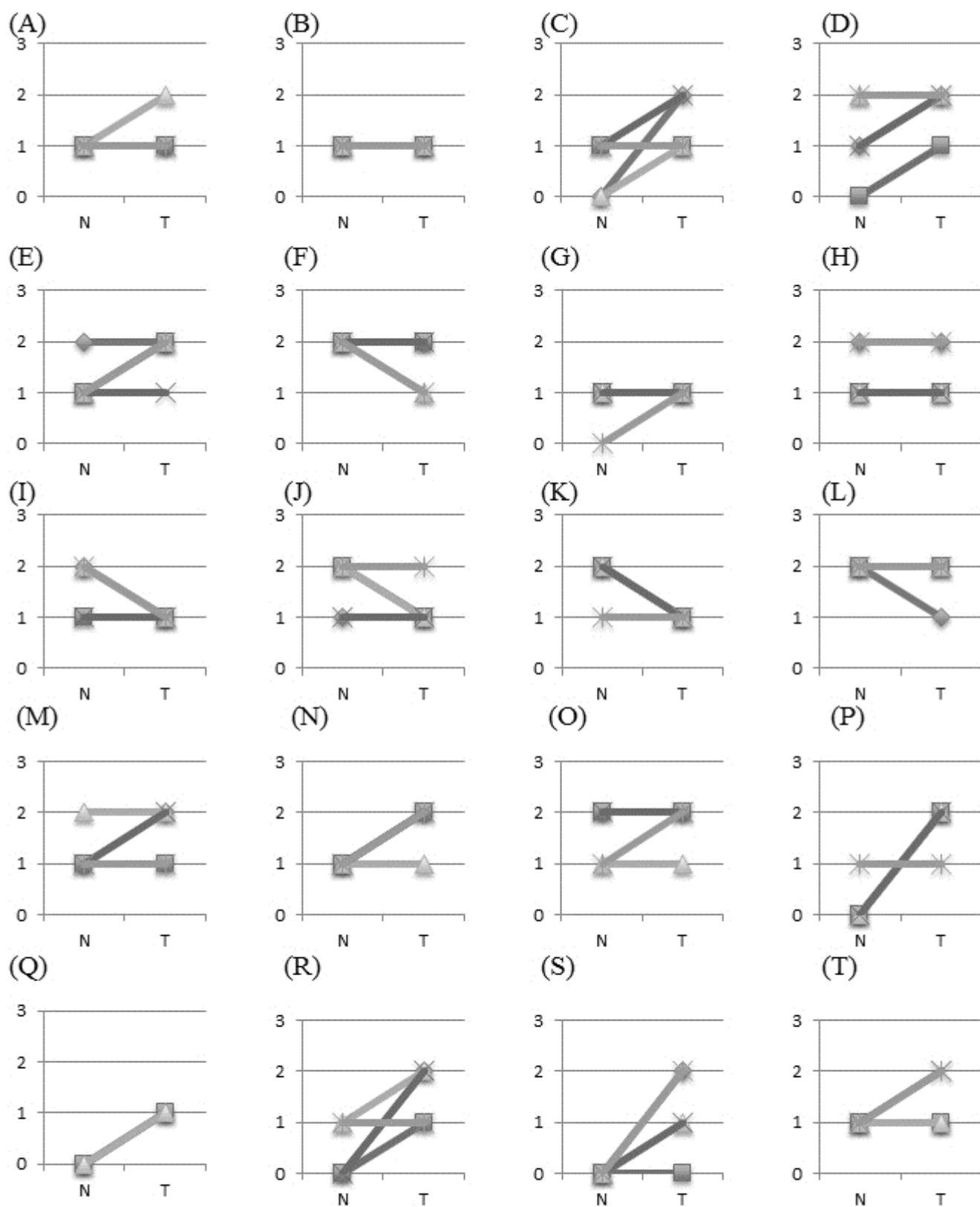


Figure S2-4

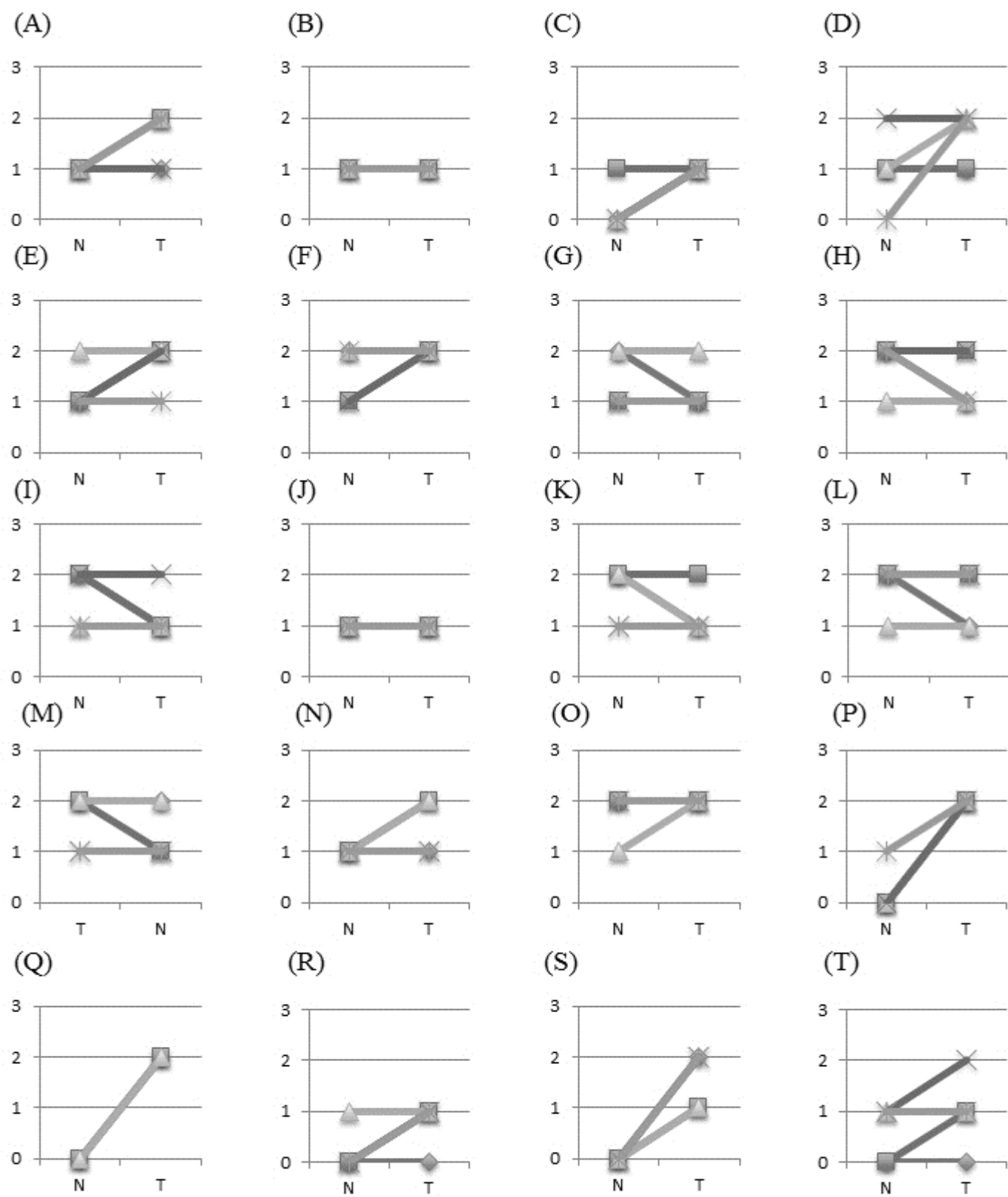


Figure S2-5



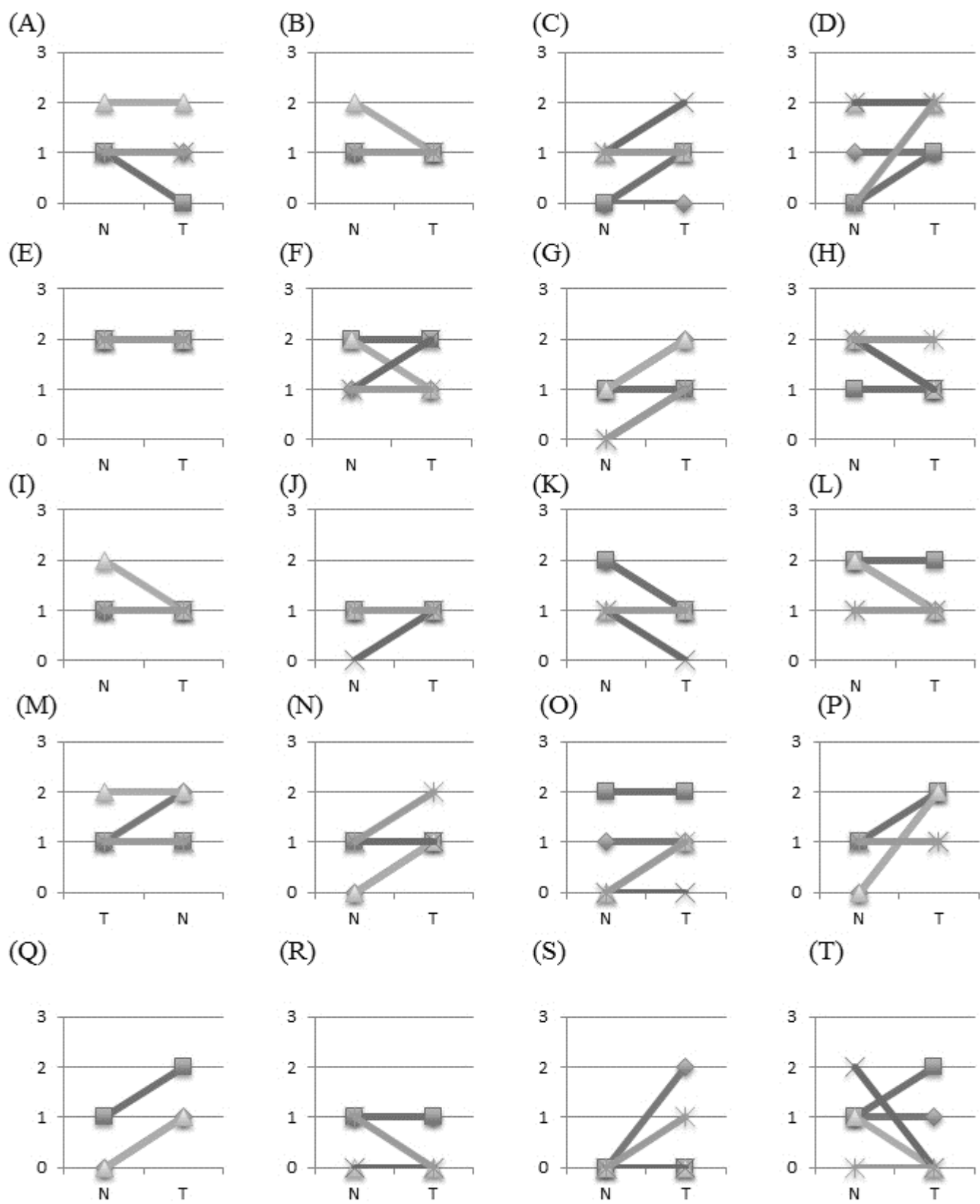


Figure S2-6

**Figure S2-1 (ULBP1), S2-2(ULBP2/6), S2-3(ULBP3), S2-4(ULBP4), S2-5(ULBP5), S2-6(MICA/B)**

NKG2DLs expression score for single pairs of non-neoplastic/neoplastic tissue for each tumor. (A) Lung (Adenocarcinoma), (B) Lung (Squamous cell carcinoma), (C) Esophagus (Squamous cell carcinoma), (D) Stomach (Adenocarcinoma), (E) Colon (Adenocarcinoma), (F) Liver (Hepatocellular carcinoma), (G) Liver (Intrahepatic cholangiocarcinoma), (H) Bile duct (Adenocarcinoma), (I) Pancreas (Adenocarcinoma), (J) Prostate (Adenocarcinoma), (K) Kidney (Renal cell carcinoma), (L) Renal plevis (Urothelial carcinoma), (M) Breast (Ductal carcinoma), (N) Uterine cervix (Squamous cell carcinoma), (O) Uterine corpus (Adenocarcinoma), (P) Thyroid (Papillary carcinoma), (Q) Thyroid (Follicular carcinoma), (R) Tongue (Squamous cell carcinoma), (S) Larynx (Squamous cell carcinoma), (T) Skin (Squamous cell carcinoma). N: Normal counterpart, T: Tumor.