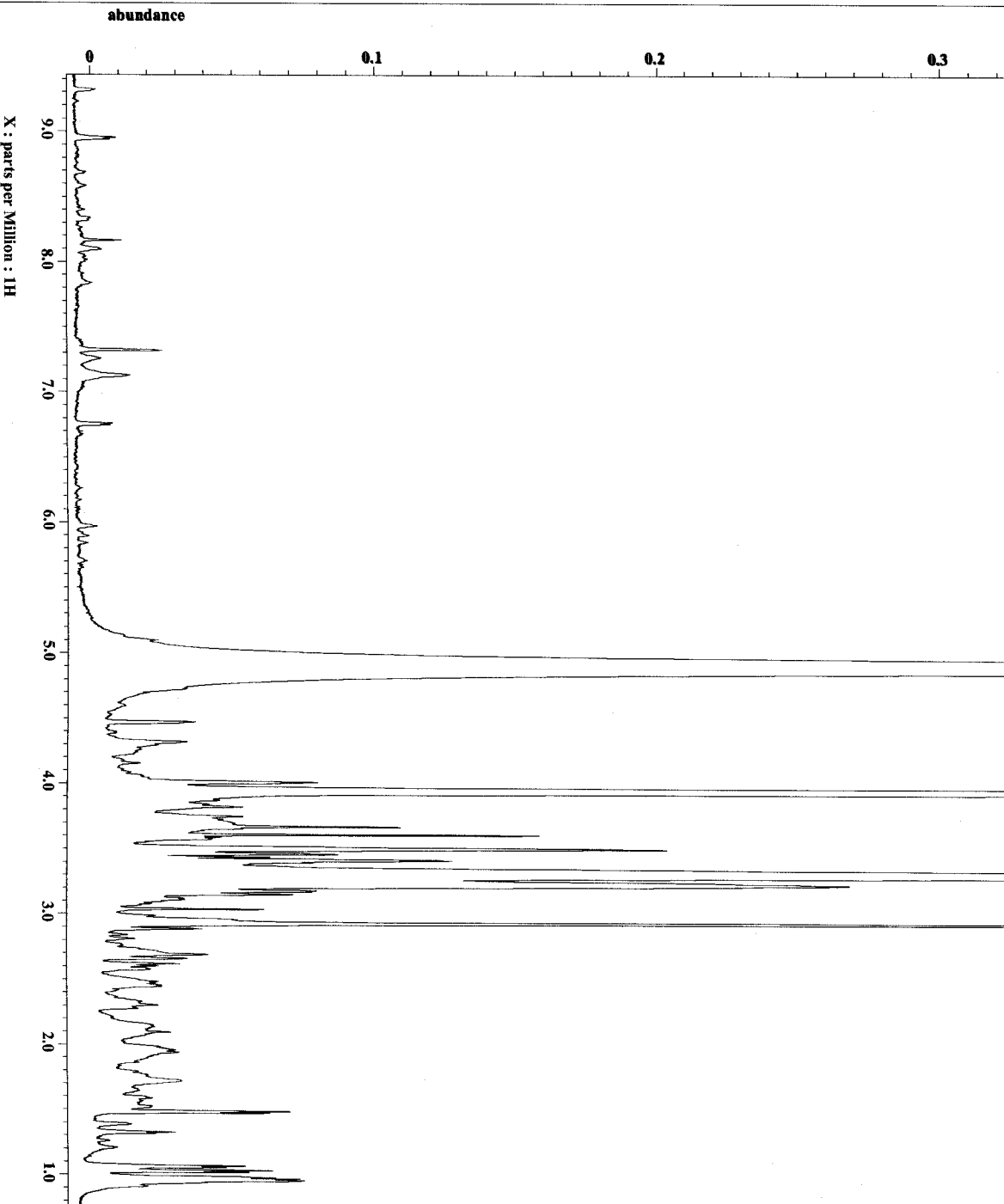


Water-soluble polar fraction



----- PROCESSING PARAMETERS -----
 dc_balance : 0 : FALSE
 serp : 0.2 [Hz] : 0.0 [s]
 trapezoid3 : 0 [%] : 80 [%] : 100 [%]
 zerofill : 1
 fit : 1 : TRUE : TRUE
 machinephase
 ppm
 phase : 2 : 0 : 50 [%]

Filename = 3sg87-3-cd3od-single_
 Author = Smithsonian
 Experiment = single_pulse.ex2
 Sample_id = 3sg87-3-cd3od
 Solvent = METHANOL-D3
 Creation_time = 9-FEB-2012 16:32:13
 Revision_time = 18-NOV-2014 09:33:40
 Current_time = 18-NOV-2014 09:36:22

Comment = single_pulse
 Data_format = 1D COMPLEX
 Dim_size = 13107
 Dim_title = 1H
 Dim_units = [ppm]
 Dimensions = X
 Site = ECA 600
 Spectrometer = ECA600-AID

Field_strength = 14.09636926 [T] (600 [Mk
 X_acq_duration = 1.4548992 [s]
 X_domain = 1H
 X_freq = 600.1723046 [MHz]
 X_offset = 51 [ppm]
 X_points = 16384
 X_prescans = 1
 X_resolution = 0.68733284 [Hz]
 X_sweep = 11.26126126 [kHz]

Irr_domain = 1H
 Irr_freq = 600.1723046 [MHz]
 Irr_offset = 51 [ppm]
 Irr_domain = 1H
 Tri_freq = 600.1723046 [MHz]
 Tri_offset = 51 [ppm]
 Clipped = FALSE
 Mod_return = 1
 Scans = 8
 Total_scans = 8

X_90_width = 6.6 [us]
 X_acq_time = 1.4548992 [s]
 X_angle = 45 [deg]
 X_atn = 3 [dB]
 X_pulse = 3.3 [us]
 Irr_mode = Off
 Tri_mode = Off
 Dante_preset = FAULT
 Initial_wait = 1 [s]
 Recvr_gain = 34
 Relaxation_delay = 5 [s]
 Repetition_time = 6.4548992 [s]
 Temp_get = 23.1 [dC]

