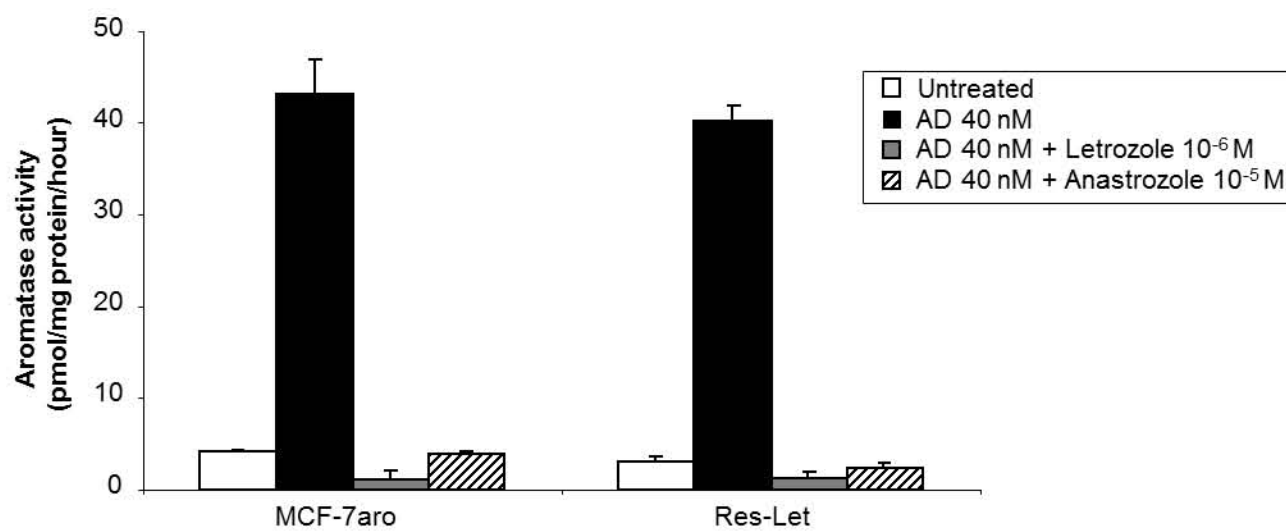
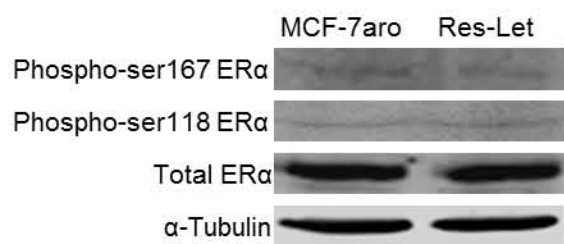
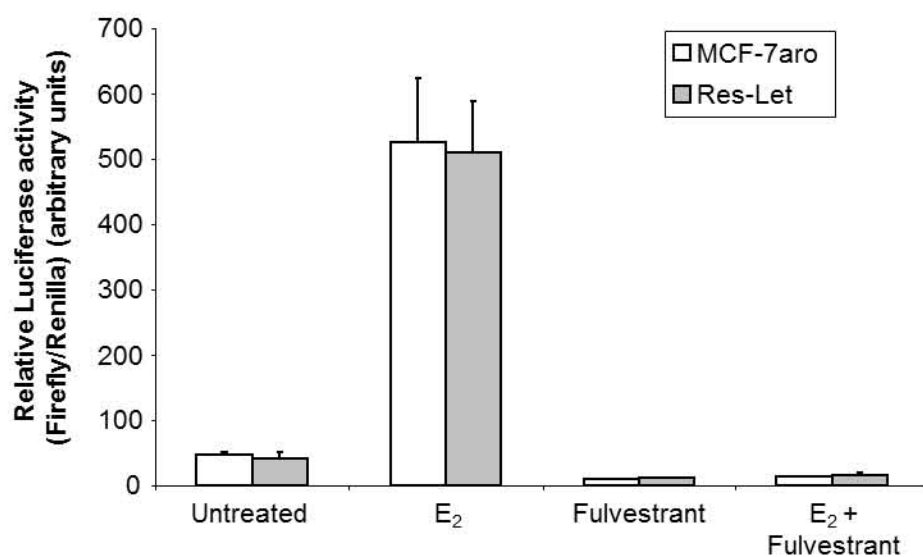


**A****B****C**

**Figure S1 Aromatase inhibitor resistance acquired by the Res-Let is not due to an impaired activity of the aromatase or to an altered ERα expression or functionality.** (A) Aromatase activity in MCF-7aro and Res-Let cell lines. AD, 4-androstenedione. (B) Western-blot analysis of Phospho-ser167 ERα, phospho-ser118 ERα and total ERα protein expression in MCF-7aro and Res-Let cells. Representative image from three independent cell lysates. (C) Relative luciferase activity of MCF-7aro and Res-Let cell lines in response to 17β-estradiol (E<sub>2</sub>, 10<sup>-9</sup> M), fulvestrant (10<sup>-7</sup> M) or a combination of E<sub>2</sub> + fulvestrant. Histograms represent the ratio of firefly value normalized to renilla value (mean ± SD of three independent experiments).