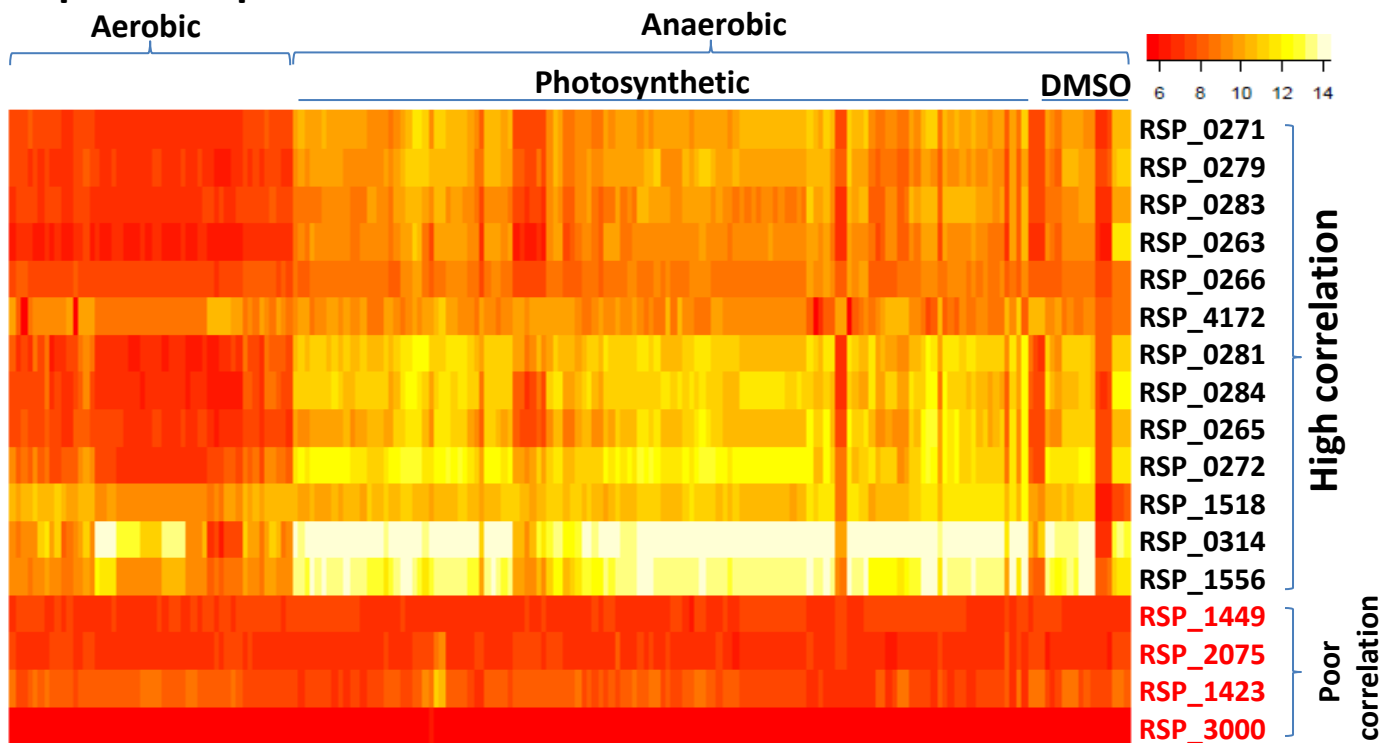


A. Expression profiles for Cluster 60



B. Predictions for Cluster 60

Phylogenetic footprinting

ID	Annotation	Verified*
RSP_0263	<i>bchC</i>	✓
RSP_0265	<i>crtE</i>	✓
RSP_0266	<i>crtD</i>	✓
RSP_0271	<i>crtI</i>	✓
RSP_0272	<i>crtA</i>	✓
RSP_0279	<i>bchG</i>	✓
RSP_0281	<i>bchE</i>	✓
RSP_0283	<i>ppaA</i>	✓
RSP_0284	<i>bchF</i>	✓
RSP_0314	<i>pucB</i>	✓
RSP_1518	<i>prrA</i>	✓
RSP_1556	<i>puc2B</i>	✓
RSP_4172	Hypothetical	✗
RSP_1423	ParA family ATPase	✗
RSP_1449	Transcriptional regulator	✗
RSP_2075	Transcriptional regulator	✗
RSP_3000	Hypothetical	✗
RSP_7374	<i>mvpT</i>	✗

Phylogenetic footprinting

+

Bi-clustering

ID	Annotation	Verified*
RSP_0263	<i>bchC</i>	✓
RSP_0265	<i>crtE</i>	✓
RSP_0266	<i>crtD</i>	✓
RSP_0271	<i>crtI</i>	✓
RSP_0272	<i>crtA</i>	✓
RSP_0279	<i>bchG</i>	✓
RSP_0281	<i>bchE</i>	✓
RSP_0283	<i>ppaA</i>	✓
RSP_0284	<i>bchF</i>	✓
RSP_0314	<i>pucB</i>	✓
RSP_1518	<i>prrA</i>	✓
RSP_1556	<i>puc2B</i>	✓
RSP_4172	Hypothetical	✗

*Verified by ChIP-seq and gene expression analysis