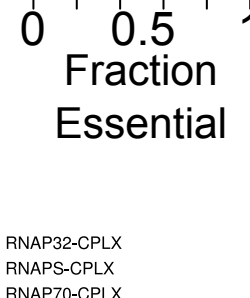
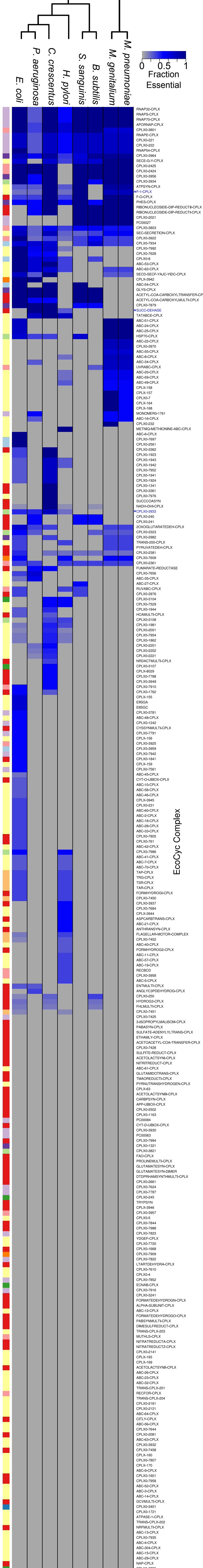


# Figure S2

- Cell Division
- Cell Structure
- Chaperone, Protein Assembly, or Modification
- Defense/Survival/Stress Response
- DNA Replication, Repair, or Modification
- Metabolism
- Motility/Chemotaxis
- RNA Modification
- Transcription or Transcriptional Regulation
- Translation or Translational Regulation
- Transport



EcoCyc Complex