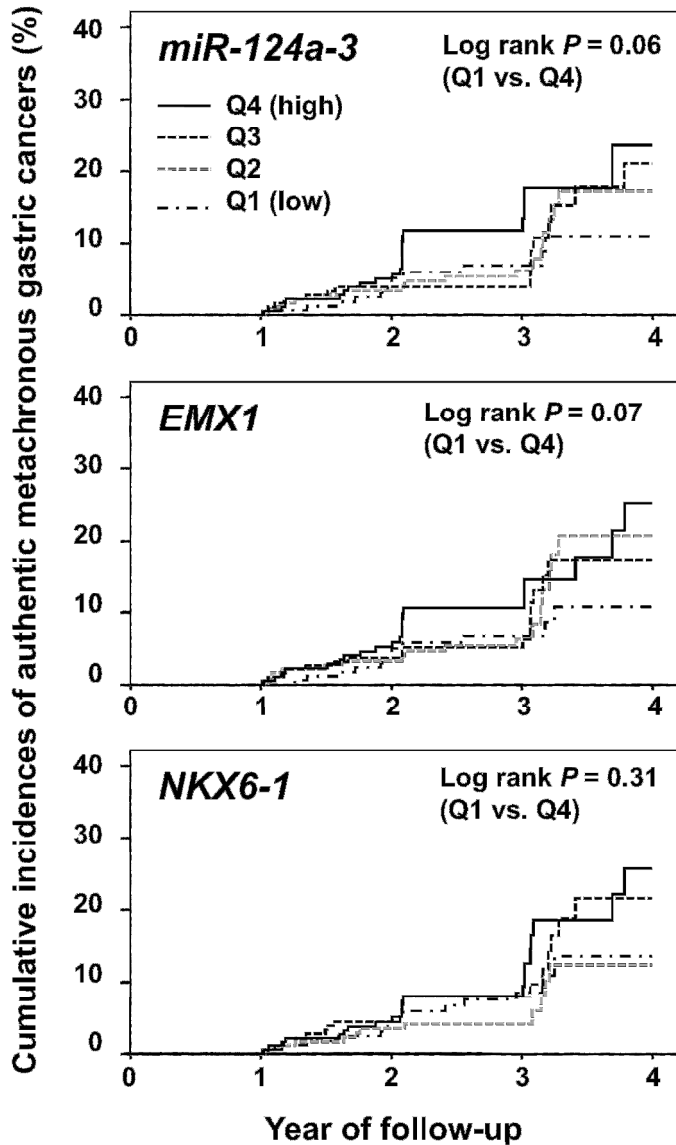


Supplementary Figure 1

Cumulative incidence of authentic metachronous gastric cancers for patients in quartile (Q1-Q4) of methylation levels of miR-124a-3, EMX1, and NKX6-1. The Q4 methylation had higher incidences of a metachronous gastric cancer compared with the Q1 methylation with P values of 0.06, 0.07, and 0.31 for miR-124a-3, EMX1, and NKX6-1, respectively, by the log-rank test.



Supplementary Figure 1