

Additional file 5 Variations in phylogenetic distribution of 16S rDNA sequences following fecal infusion. The diagrammatic phylogenetic tree presents a summary of the rRNA sequences obtained from DGGE bands in this study. Phyla are named to the left of the tree and lower taxonomic levels to the right. The number of taxa in a clade is designated as the relative proportion (%) in the whole fecal microbiota. Donor, -1 day, 1 day, 7 days, 14 days, and 21 days indicate the samples of the donor, 1 day before fecal transplantation, and 1, 7, 14 as well as 21 days after the treatment, respectively.

Donor

-1 day

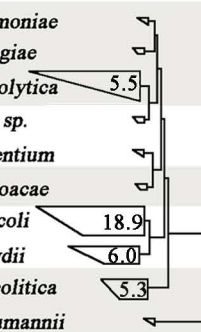
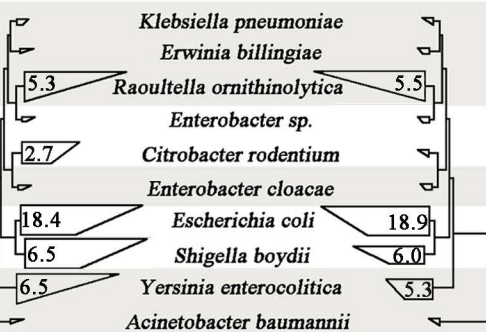
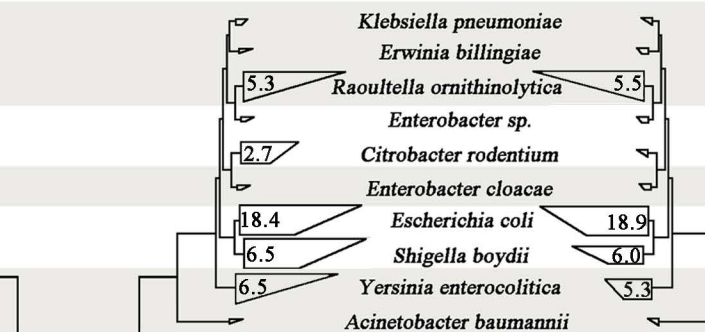
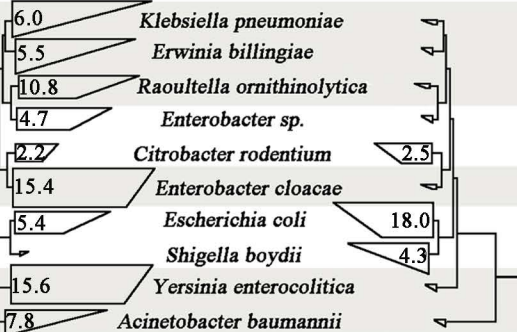
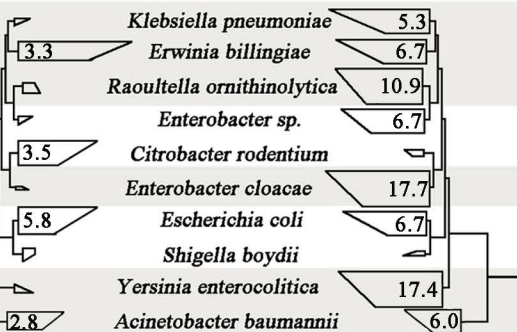
1 day

7 days

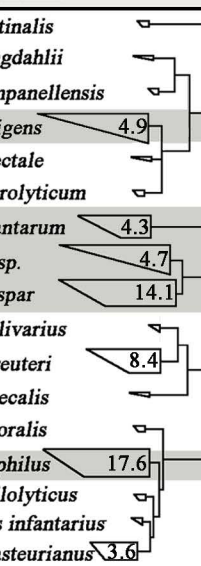
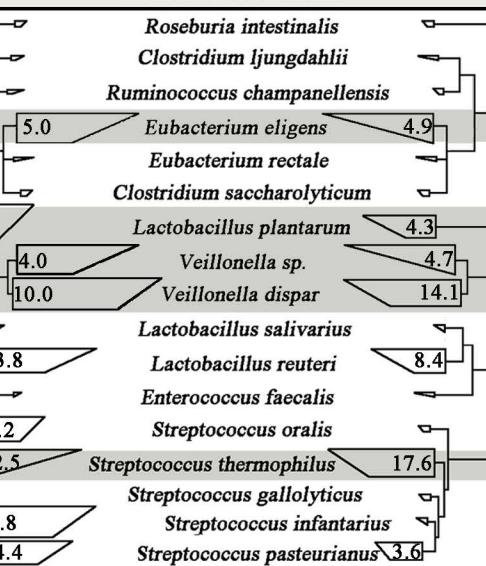
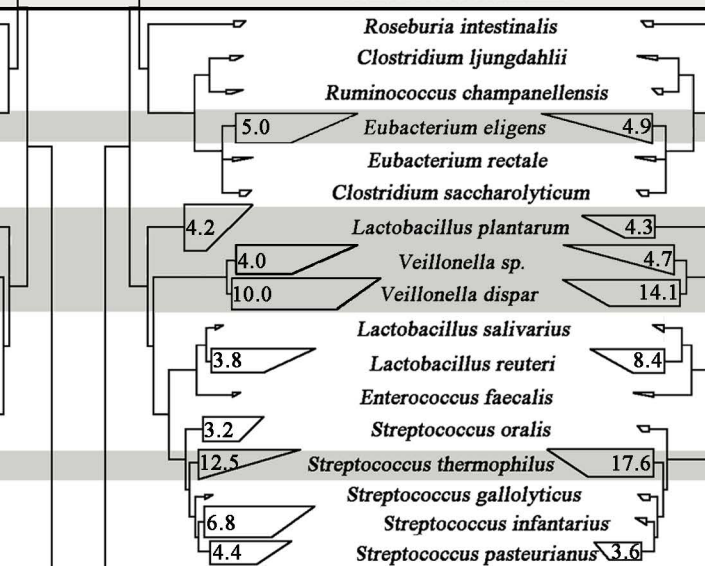
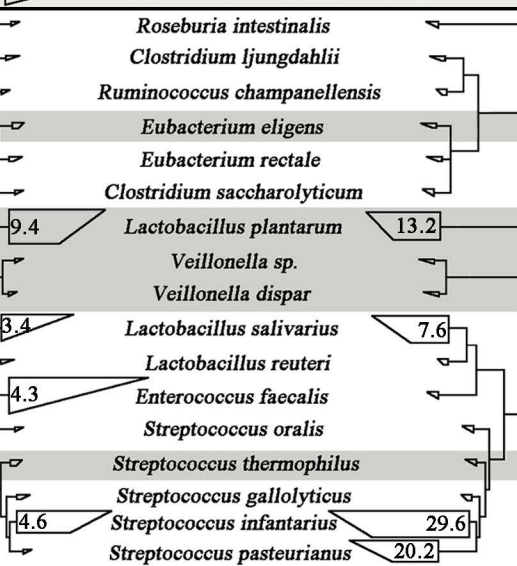
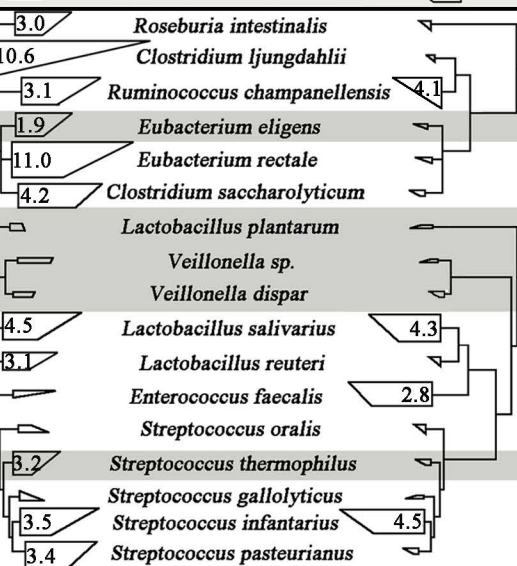
14 days

21 days

Proteobacteria



Firmicutes



Bacteroidetes

