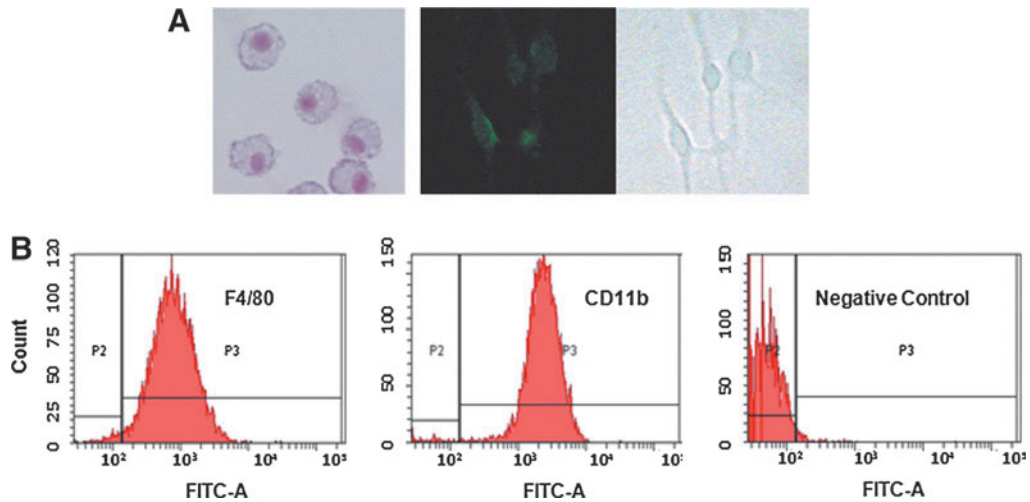


Supplementary Data



SUPPLEMENTARY FIG. S1. Isolation of bone marrow-derived macrophages (BMM). (A) Morphological examination of isolated BMM cells. *Left Panel:* Representative photomicrograph of cytopsin stained with May-Grünwald-Giemsa to visualize nuclei and granules (Mag. $\times 60$). *Middle and right panels:* Immunofluorescence staining. BMMs were stained with FITC Anti-Mouse CD11b Monoclonal antibody. Macrophages are positive for CD11b (*green*, Mag. $\times 60$). (B) Phenotypic characterization of BMMs by flow cytometry. BMMs were stained with FITC Rat IgG2b Isotypic Control antibody (#CLCR2B01) and FITC Anti-Mouse CD11b Monoclonal antibody (#CL8941F) or FITC Anti-Mouse Macrophage (F4/80) monoclonal antibody (#CL8940F). On day 7, 98% of Macrophages are double positive for CD11b and F4/80.