

Supplemental Figure Legends

Figure S1.

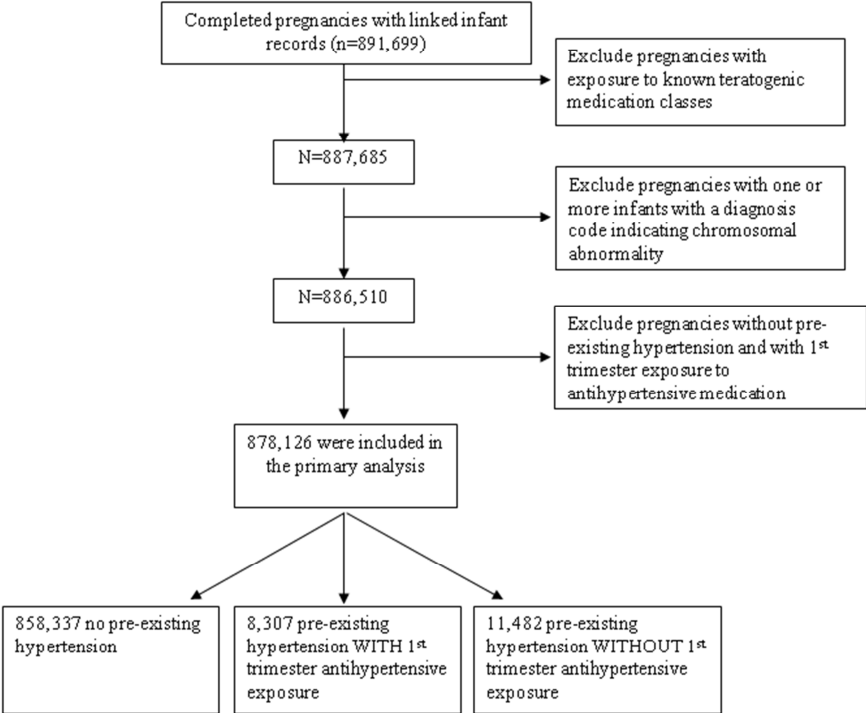
Heading: Patient flow chart

Figure S2.

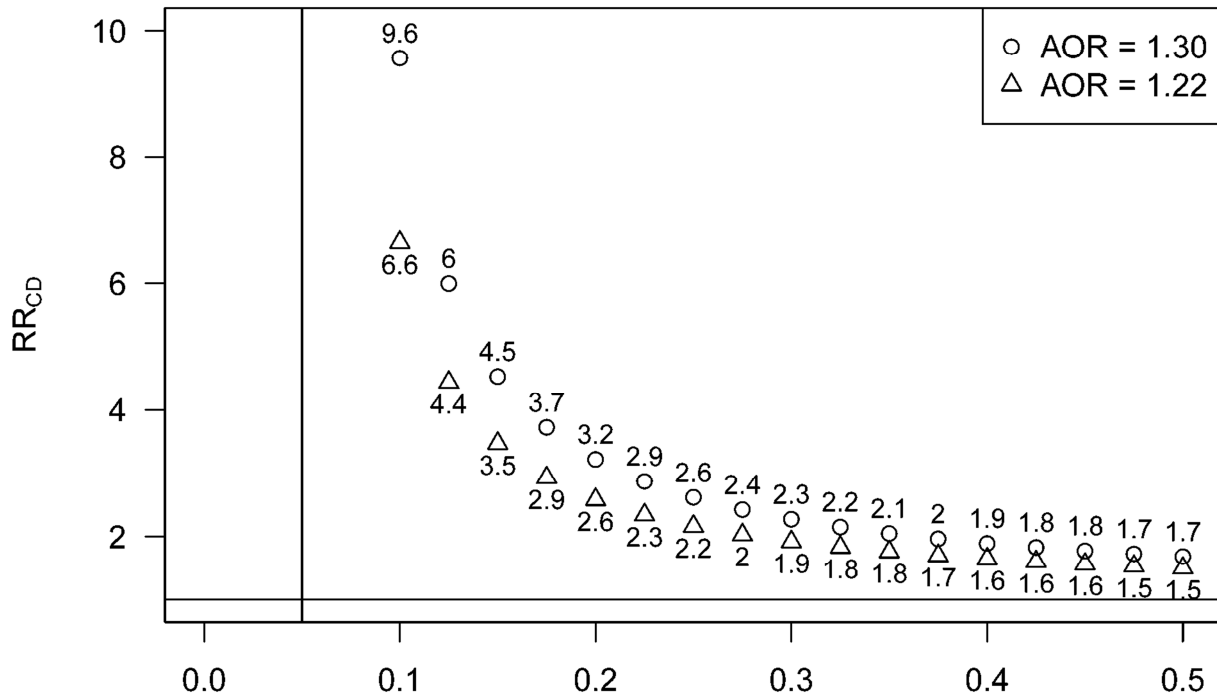
Heading: Confounder-outcome relative risk required to produce observed treatment effects.

Legend: AOR = 1.30 for treated chronic hypertension, AOR = 1.22 for untreated chronic hypertension. The prevalence of the hypothetical confounder (“C”) in the unexposed population is 5%. AOR indicates adjusted odds ratio.

Figure 1. Patient flow chart



Confounder-outcome RR required to produce observed treatment effects



Prevalence of C among exposed
 Prevalence of C among unexposed = 0.05