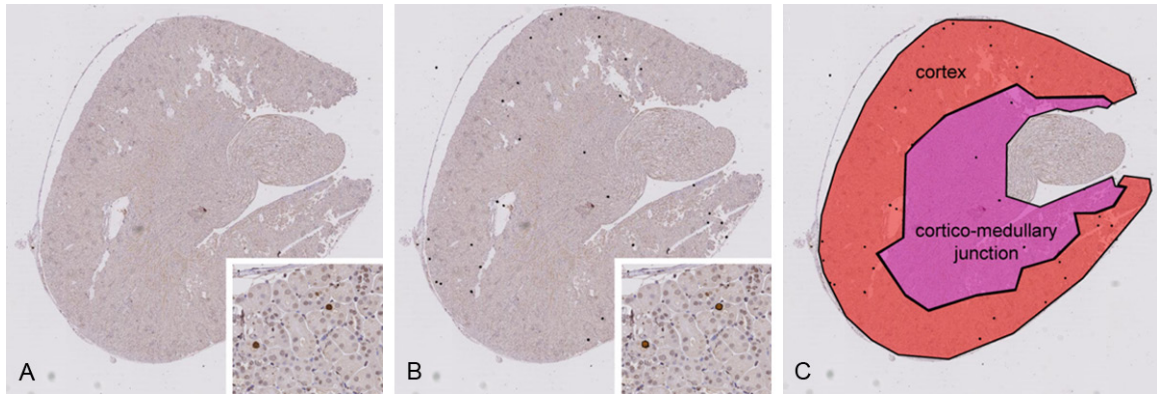


Impact of CaSR activation before renal I/R



Supplementary Figure 1. Hybrid human-computer approach to count immunoreactive cells on kidney slides using the Cytomine software. A. Immunostaining is performed using antibodies directed against Proliferative Cell Nuclear Antigen (PCNA). Whole kidney sections are scanned using the NanoZoomer 2.0 HT (Hamamatsu®). B. Examples of PCNA-positive cells are manually encircled. C. Regions of interests, i.e. cortex (red zone) and cortico-medullary junction (purple zone), are manually delineated. Then a tree-based machine learning algorithm is used to build a positive pixel segmentation model further combined with connected-component analysis and filtering operations based on size and circularity criteria.