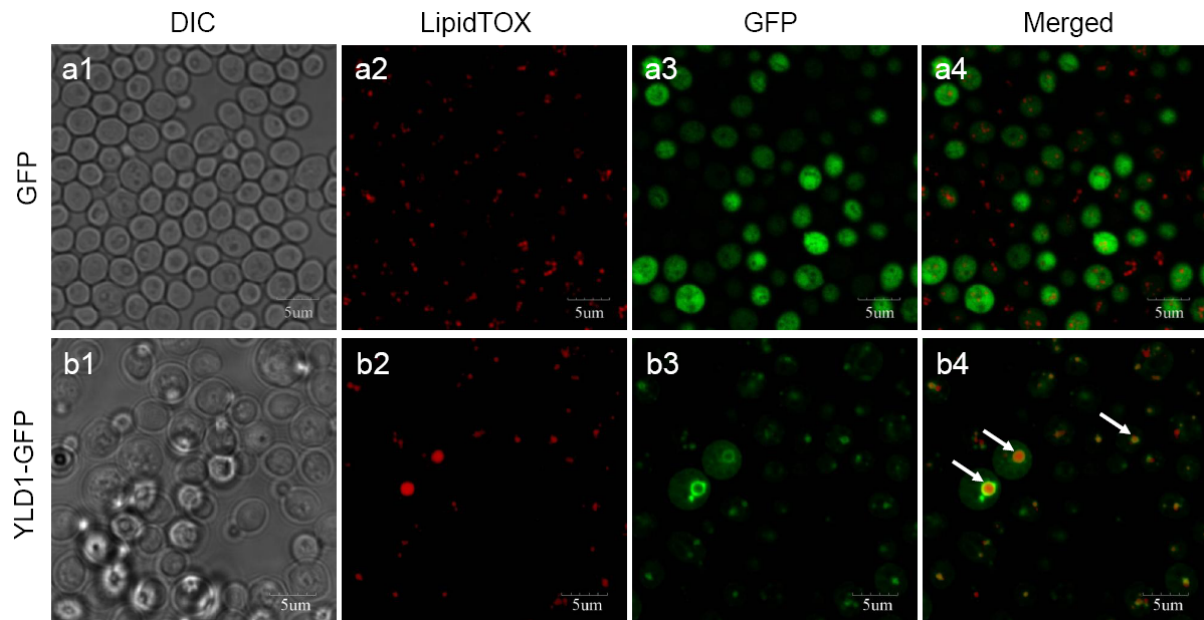


Fig S1. Localization of Ldp1 in *S. cerevisiae* cells cultured in the absence of exogenous oleic acid. The culture condition was similar to that described in Materials and Methods. The arrows indicated the LD localization of Ldp1 and large LDs in cells overexpressing YLDP1-GFP. Bar = 5 μm .



Supplemental Table 1. Oligonucleotide primers used for RT-qPCR analysis.

Target gene	Oligonucleotides (5' - 3')	Exon spanning ¹	Size of product (bp)	Efficiency %	R ²
<i>RHTO_07686</i>	F: ctcgctcgctccatccaa R: atcgggcggctggttctg		110	96.12	0.997
<i>RHTO_02004</i>	F: catcctcgcttagaccacg R: gaagacaaaggcaacgagaacc		99	96.99	0.999
<i>RHTO_02032</i>	F: atccgccaggtcgtcaaca R: cactcgcccgaaggtaagg		218	94.23	0.984
<i>RHTO_03915</i>	F: cggcaccttgaacggcttg R: cgtctactggcgtgctgg	Exons	166	95.89	0.998
<i>RHTO_04192</i>	F: catttgctcacctacgtacca R: tccacgtcctccatctgc	Junction	130	93.52	0.992
<i>RHTO_00856</i>	F: acatcacgggttatggtgtctgg R: tctactcgcgagtgaggcttacgg	Exons	174	90.20	0.999
<i>RHTO_05627</i>	F: ccacattcgcaaggaggtcac R: cgccgtcccttctccacac	Exons	204	95.65	0.998
<i>RHTO_03165</i>	F: gattttaccggagcgcaccac R: gcgagcgcgaatgttgacgata	Exons	230	97.57	0.988
<i>RHTO_01062</i>	F: cgagggatactgagataacgggtgc R: aagaaccaaagcgaagcgaaac		125	96.63	0.998
<i>RHTO_03560</i> ²	F: gctgtcttcccctcgattgt R: gggtcaggataccacgcttc	Junction	115	93.15	0.998
<i>RHTO_03746</i> ³	F: ggtatgcacctcaacgaca R: gacgagcaagtccacgacac	Exons	90	94.33	1.000

1. Exons: two primers are located in different exons; Junction: primer spans an exon-exon border.
2. Coding for the actin
3. Coding for glyceraldehyde 3-phosphate dehydrogenase