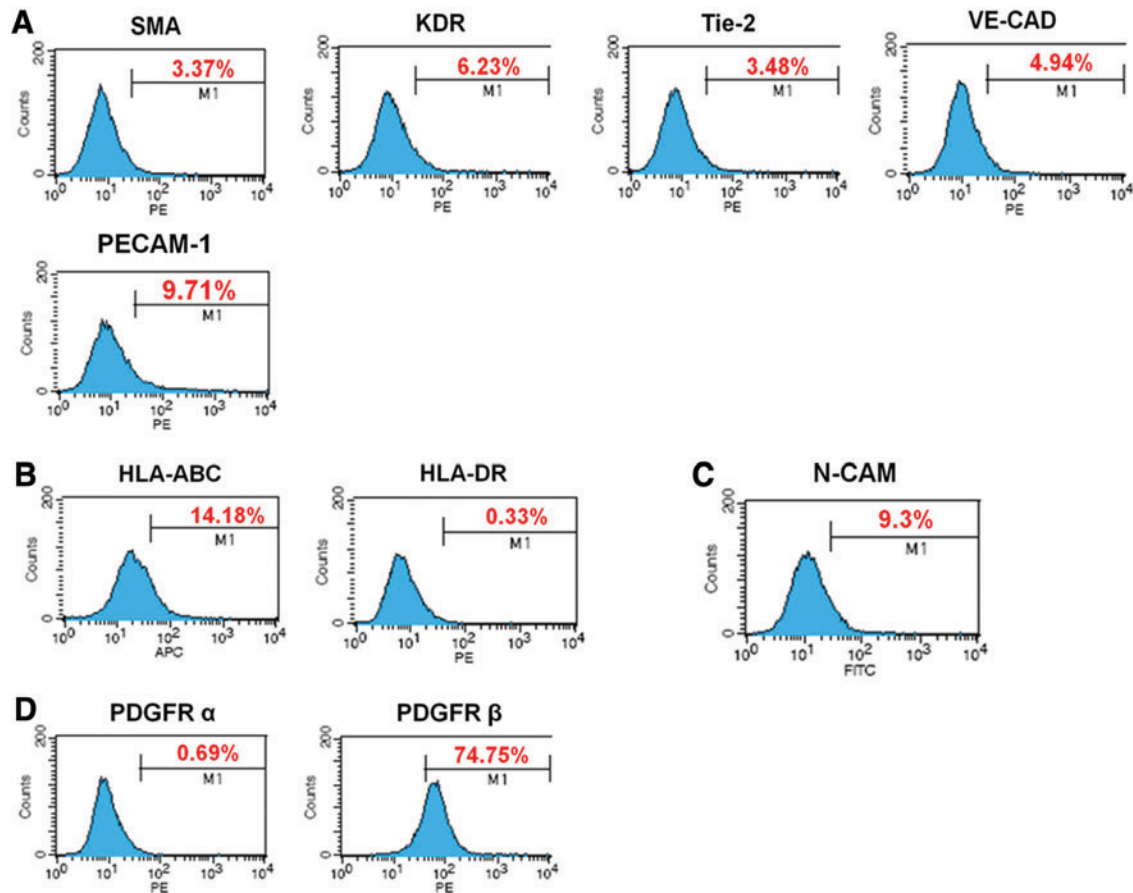


## Supplementary Data



**SUPPLEMENTARY FIG. S1.** Flow cytometry analysis of hESC-MSCs at passage 6. **(A)** P6 hESC-MSCs expressed a very low level of markers for endothelial cells (SMA, KDR, Tie-2, PDGFR- $\alpha$ , VE-CAD, and PECAM-1). **(B)** The expression of human leukocyte antigen (HLA) ABC, DR, and **(C)** N-CAM (neural cells) was low in hESC-MSC. **(D)** PDGFR- $\alpha$  and PDGFR- $\beta$ , two important factors regulating cell proliferation, cellular differentiation, and cell growth, were expressed at a low and high level, respectively. hESC, human embryonic stem cell; MSC, mesenchymal stem cell.