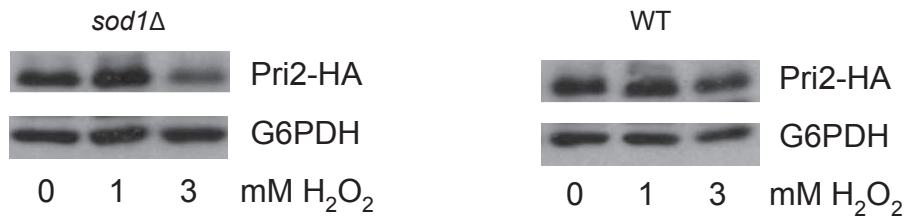
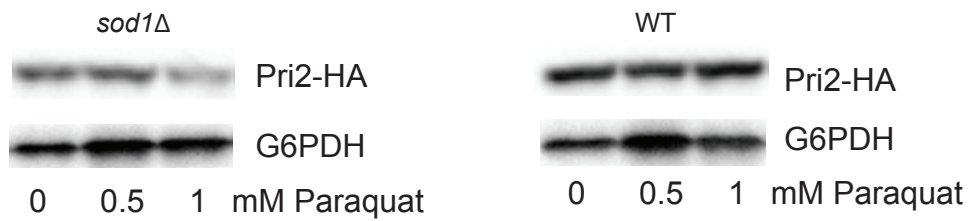


A



B



**Supplemental Figure S2. Decreased Pri2 protein levels in *sod1Δ* mutant treated with paraquat and H<sub>2</sub>O<sub>2</sub>**

Log-phase culture of *sod1Δ* and wild-type cells (both containing an integrated PRI2-HA) were treated with H<sub>2</sub>O<sub>2</sub> (A) and paraquat (B) of the indicated concentrations for 3 h at 30°C before being harvested for protein extraction. Protein extracts were resolved by SDS-PAGE and probed for Pri2 and G6PDH as a loading control.