

Figure S1. *Jasmonates regulate salicylic and abscisic acid in the roots of root herbivore attacked plants.* Phytohormone levels in wild type (WT) and jasmonate-deficient *asLOX* and *hebiba* plants are shown. Plants were infested with *Lissorhoptus oryzophilus* under flooded conditions for 20 days (+SE; n=12). Stars indicate significant differences between genotypes (p<0.05*; p<0.01**; p<0.001***).

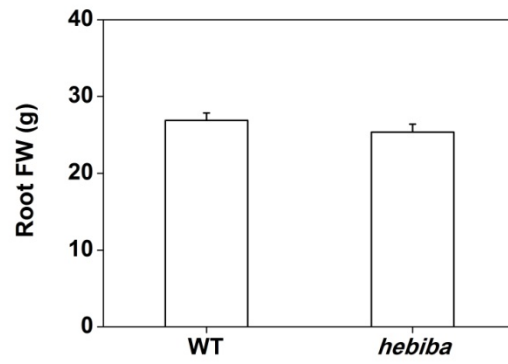


Figure S2. Comparison of root-biomass on wild type and JA deficient *hebiba* plants under flooded conditions. Mean values + SE are shown (n=10).

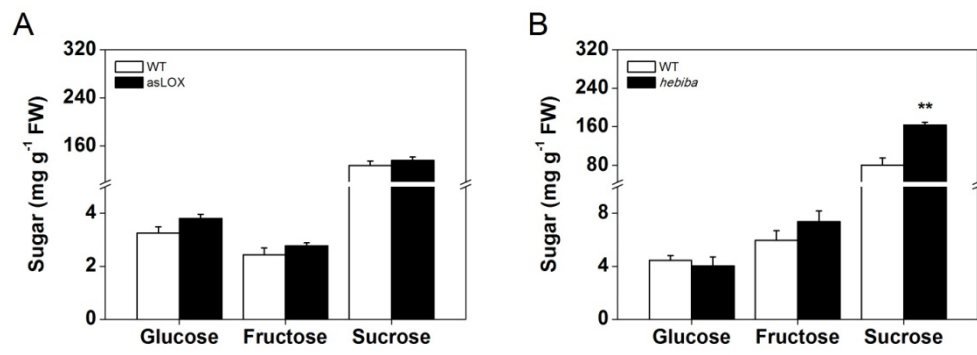


Figure S3. Constitutive soluble sugars in wild-type or *JA* deficient *asLOX* and *hebiba* plants under flooded conditions. Mean values + SE are shown (n=6).

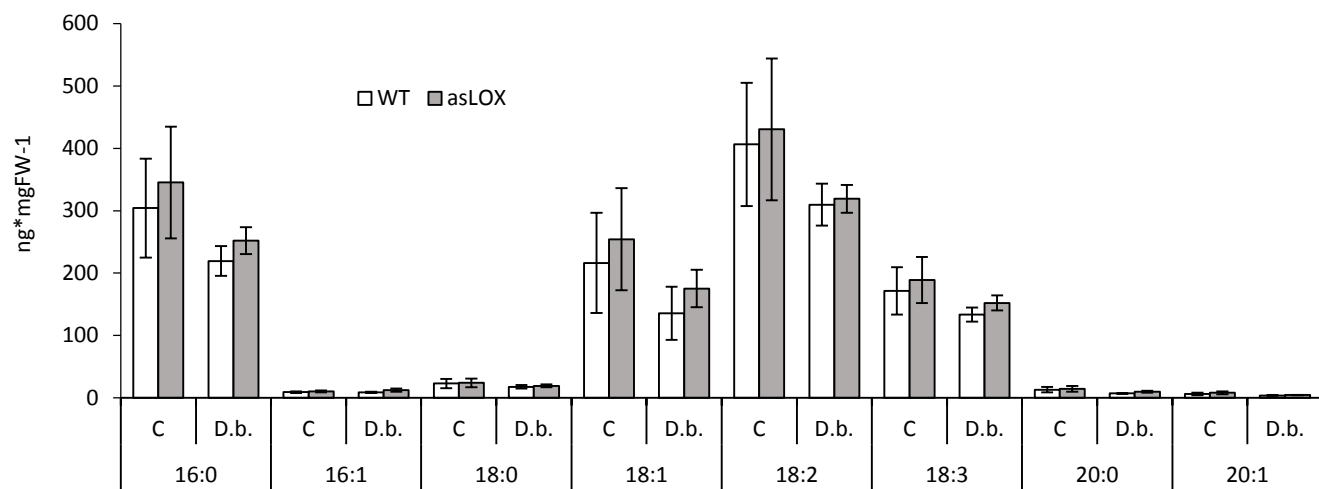


Figure S4. Fatty acid concentrations in control and *D. balteata* infested wild type and *asLOX* roots. Samples were analyzed 7 days post infestation (\pm SE; n=9-10). Two-Way ANOVAs did not detect any significant difference between genotypes and treatments ($p < 0.05$).