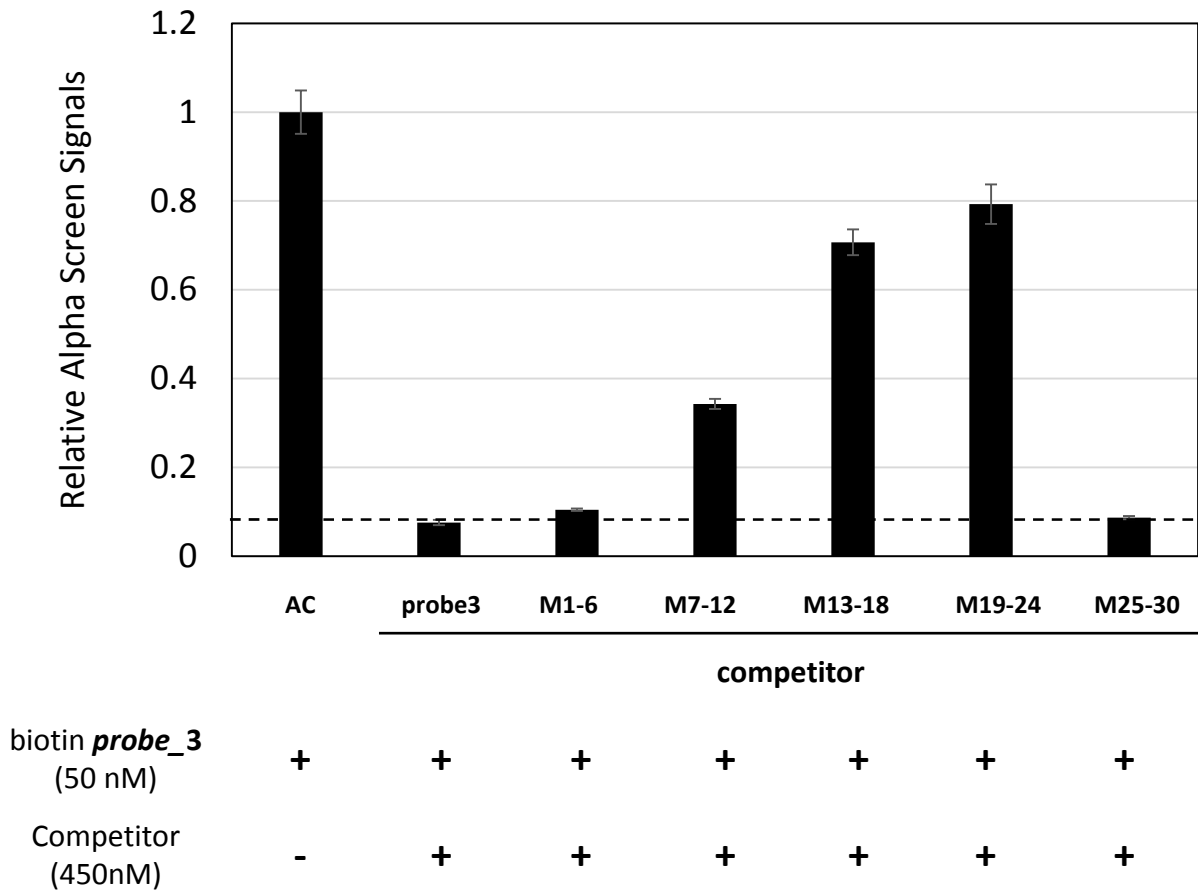


Supplemental Figure S3

A

probe_3	CTCCAATTAAGGGGAGGGCTTAACTAGTGC
<i>M</i> 1-6	tcttgg TTAAGGGGAGGGCTTAACTAGTGC
<i>M</i> 7-12	CTCCA accgga aGGAGGGCTTAACTAGTGC
<i>M</i> 13-18	CTCCAATTAAG Gaagaaa CTTAACTAGTGC
<i>M</i> 19-24	CTCCAATTAAGGGGAGGG tccggt TAGTGC
<i>M</i> 25-30	CTCCAATTAAGGGGAGGGCTTAA Ccgacat

B



Supplemental Figure S3. *In vitro* binding assay of STOP1 protein to the mutated dsDNA probe 3 (see Fig 5). Relative alpha screen signals of STOP1 protein to the biotinylated probe3 with absence (AC) or presence of non-biotinylated mutated dsDNA in panel A are shown in the panel B. Values \pm SD are shown ($n = 3$).