

Supplemental Information

SUPPLEMENTARY FIGURE LEGENDS

Supplemental Figure 1. *Characterization of $Tgr5^{bm+/+}$ and $Tgr5^{bm-/-}$ mice.*

(A) Quantitative real time analysis of *Tgr5* on genomic DNA extracted from peripheral blood. (B) Daily food and (C) water intake measured in HFD-fed *Tgr5^{bm+/+}* (white bar) and *Tgr5^{bm-/-}* (black bar) mice. n=12/group. Results represent the mean±SEM. P values were calculated by using two tailed Student's t test and one-way ANOVA test followed by Bonferroni's post hoc analysis when appropriate.

Supplemental Figure 2. *Comparable inflammation in gastrocnemius derived from $Tgr5^{bm-/-}$ and $Tgr5^{bm+/+}$ mice.*

(A) mRNA levels of macrophage markers in gastrocnemius of HFD-fed *Tgr5^{bm+/+}* (white bar) and *Tgr5^{bm-/-}* (black bar) mice. n=12/group. (B-C) mRNA levels of (B) pro-inflammatory M1 and (C) anti-inflammatory M2 markers in gastrocnemius of HFD-fed *Tgr5^{bm+/+}* and *Tgr5^{bm-/-}* mice. n=12/group. Results represent the mean±SEM. P values were calculated by using two tailed Student's t test. *statistically significant, p<0.05.

Supplemental Figure 3. *Glucose homeostasis and macrophage infiltration in eWAT of $LysM-Cre Tgr5^{fl/fl}$ mice.*

(A) mRNA levels of Tgr5 in primary bone marrow-derived macrophages (BMDMs) isolated from *Tgr5^{fl/fl}* or LysM-Cre *Tgr5^{fl/fl}* mice. n=4/group. (B) Blood glucose levels during insulin tolerance test (ITT) (insulin; 0.50 U/kg) in chow diet-fed *Tgr5^{fl/fl}* and LysM-Cre *Tgr5^{fl/fl}* mice. n=12/group. (C) Plasma levels of insulin during an oral glucose tolerance test (OGTT) in chow diet-fed *Tgr5^{fl/fl}* and LysM-Cre *Tgr5^{fl/fl}* mice. n=12/group. (D) Blood glucose levels during OGTT in chow diet-fed *Tgr5^{fl/fl}* and LysM-Cre *Tgr5^{fl/fl}* mice. n=12/group. (E) mRNA levels of macrophage markers in eWAT of chow diet-fed *Tgr5^{fl/fl}* and LysM-Cre *Tgr5^{fl/fl}* mice. n=12/group. Results represent the mean±SEM. P values were calculated by using two tailed Student's t test and two-way ANOVA test followed by Bonferroni's post hoc analysis when appropriate. ***p<0.001.

Supplemental Figure 4. Chemokine and chemokine receptor expression in *Tgr5^{+/+}* and *Tgr5^{-/-}* BMDMs.

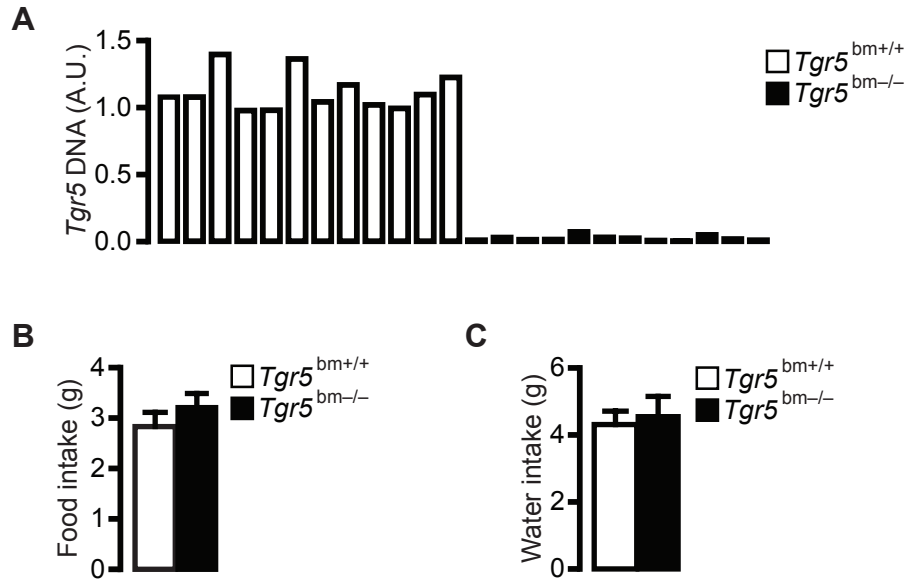
(A-E) mRNA levels of chemokines and their cognate receptors in primary bone marrow-derived macrophages (BMDMs) isolated from *Tgr5^{+/+}* or *Tgr5^{-/-}* mice and stimulated with LPS (10 ng/mL) for 24 hr, in presence or absence of the TGR5 agonist INT-777 (30µM). n=6/group. Results represent the mean±SEM. P values were calculated by using one-way ANOVA test followed by Bonferroni's post hoc analysis. *p<0.05 **p<0.01, ***p<0.001 versus genotype and #p<0.001 versus control.

Supplemental Figure 5. Expression of nuclear receptors and their target genes in *Tgr5^{+/+}* and *Tgr5^{-/-}* BMDMs.

(A-C) mRNA levels of **(A)** PPAR γ 1 and its target genes **(B)** CD36 and **(C)** Lpl in primary bone marrow-derived macrophages (BMDMs) isolated from *Tgr5*^{+/+} or *Tgr5*^{-/-} mice and stimulated with LPS (10 ng/mL) for 24 hr, in presence or absence of the TGR5 agonist INT-777 (30 μ M). n=6/group. **(D-I)** mRNA levels of **(D)** LXR α , **(E)** LXR β and their target genes **(F)** ApoE, **(G)** Abca1, **(H)** Abcg1 and **(I)** Srebp1c in primary bone marrow-derived macrophages (BMDMs) isolated from *Tgr5*^{+/+} or *Tgr5*^{-/-} mice and stimulated with LPS (10 ng/mL) for 24 hr, in presence or absence of the TGR5 agonist INT-777 (30 μ M). n=6/group. Results represent the mean \pm SEM. P values were calculated by using one-way ANOVA test followed by Bonferroni's post hoc analysis. *p<0.05 **p<0.01, ***p<0.001 versus genotype and #p<0.001 versus control.

Supplemental Table 1. Haematological parameters measured in *Tgr5*^{bm+/+} and *Tgr5*^{bm-/-} mice after 18 week of HFD (n=6/group).

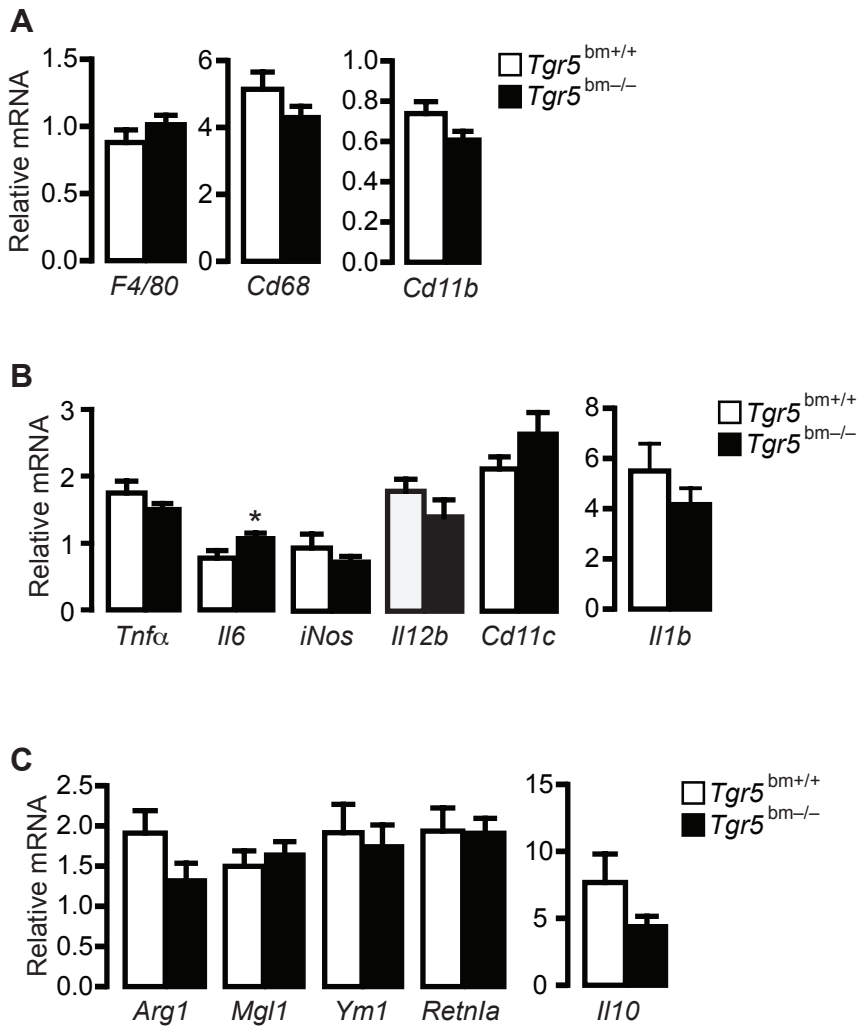
Supplemental Figure 1



Supplemental Figure 1.

Characterization of *Tgr5*^{bm+/+} and *Tgr5*^{bm-/-} mice. **(A)** Quantitative real time analysis of *Tgr5* on genomic DNA extracted from peripheral blood of *Tgr5*^{bm+/+} and *Tgr5*^{bm-/-} mice. n=12/group. **(B)** Daily food and **(C)** water intake measured in HFD-fed *Tgr5*^{bm+/+} (white bar) and *Tgr5*^{bm-/-} (black bar) mice. n=12/group. Results represent the mean±SEM. P values were calculated by using two tailed Student's t test and one-way ANOVA test followed by Bonferroni's post hoc analysis when appropriate.

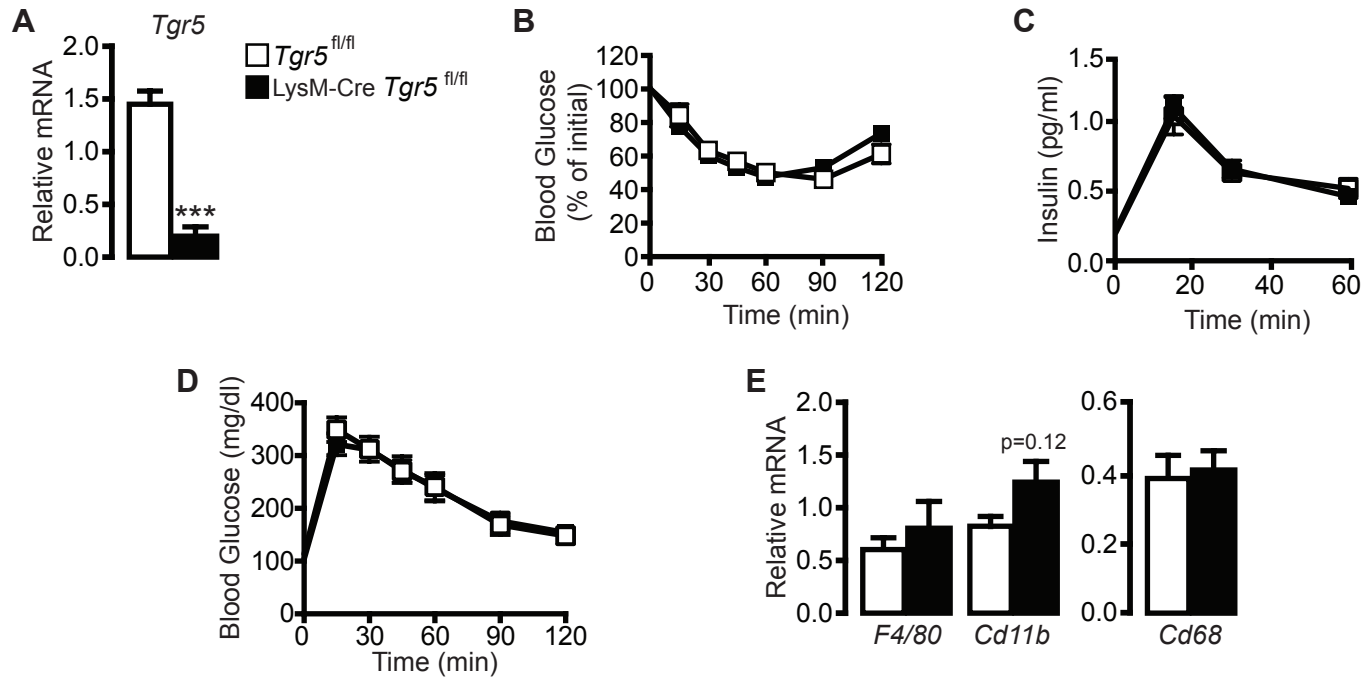
Supplemental Figure 2



Supplemental Figure 2.

Comparable inflammation in gastrocnemius derived from $Tgr5^{bm-/-}$ and $Tgr5^{bm+/+}$ mice. **(A)** mRNA levels of macrophage markers in gastrocnemius of HFD-fed $Tgr5^{bm+/+}$ (white bar) and $Tgr5^{bm-/-}$ (black bar) mice. $n=12$ /group. **(B-C)** mRNA levels of **(B)** pro-inflammatory M1 and **(C)** anti-inflammatory M2 markers in gastrocnemius of HFD-fed $Tgr5^{bm+/+}$ and $Tgr5^{bm-/-}$ mice. $n=12$ /group. Results represent the mean \pm SEM. P values were calculated by using two tailed Student's t test. *statistically significant, $p<0.05$.

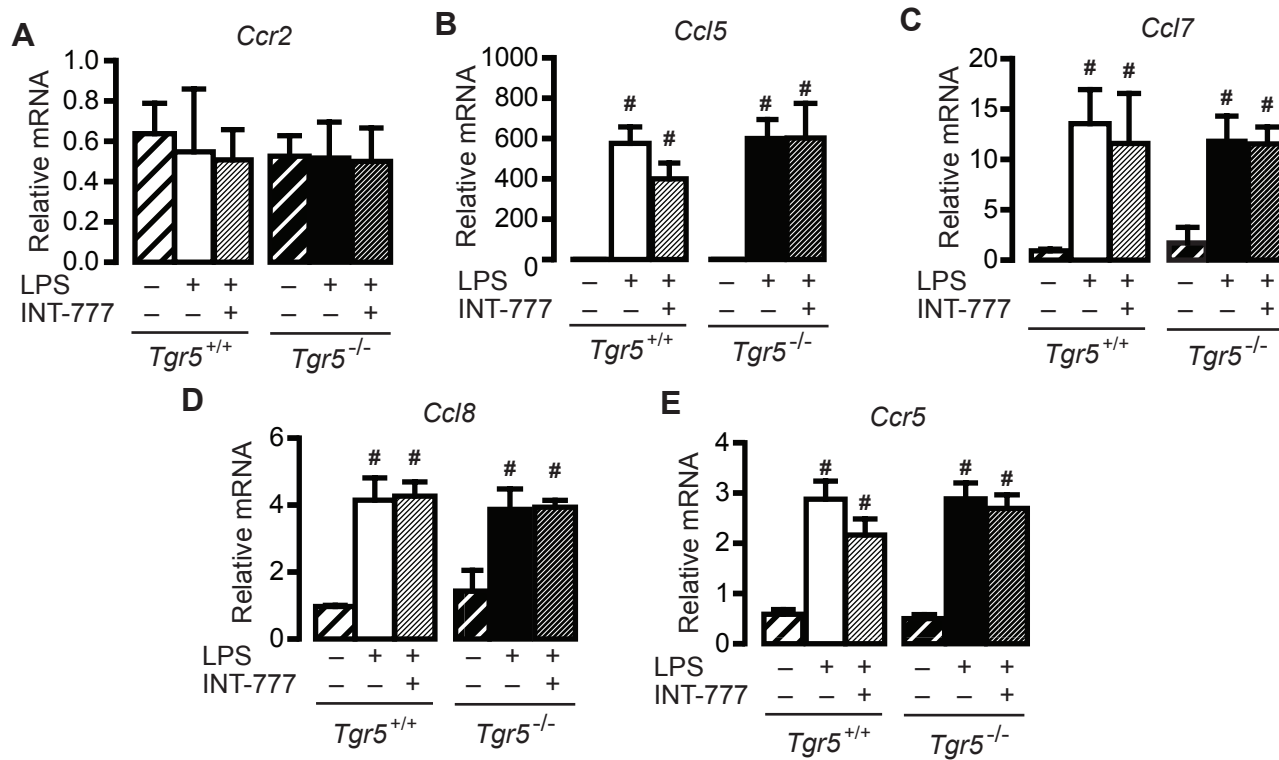
Supplemental Figure 3



Supplemental Figure 3.

Glucose homeostasis and macrophage infiltration in eWAT of LysM-Cre *Tgr5*^{fl/fl} mice. **(A)** mRNA levels of *Tgr5* in primary bone marrow-derived macrophages (BMDMs) isolated from *Tgr5*^{fl/fl} or LysM-Cre *Tgr5*^{fl/fl} mice. n=4/group. **(B)** Blood glucose levels during insulin tolerance test (ITT) (insulin; 0.50 U/kg) in chow diet-fed *Tgr5*^{fl/fl} and LysM-Cre *Tgr5*^{fl/fl} mice. n=12/group. **(C)** Plasma levels of insulin during an oral glucose tolerance test (OGTT) in chow diet-fed *Tgr5*^{fl/fl} and LysM-Cre *Tgr5*^{fl/fl} mice. n=12/group. **(D)** Blood glucose levels during OGTT in chow diet-fed *Tgr5*^{fl/fl} and LysM-Cre *Tgr5*^{fl/fl} mice. n=12/group. **(E)** mRNA levels of macrophage markers in eWAT of chow diet-fed *Tgr5*^{fl/fl} and LysM-Cre *Tgr5*^{fl/fl} mice. n=12/group. Results represent the mean±SEM. P values were calculated by using two tailed Student's t test and two-way ANOVA test followed by Bonferroni's post hoc analysis when appropriate. *** p<0.001.

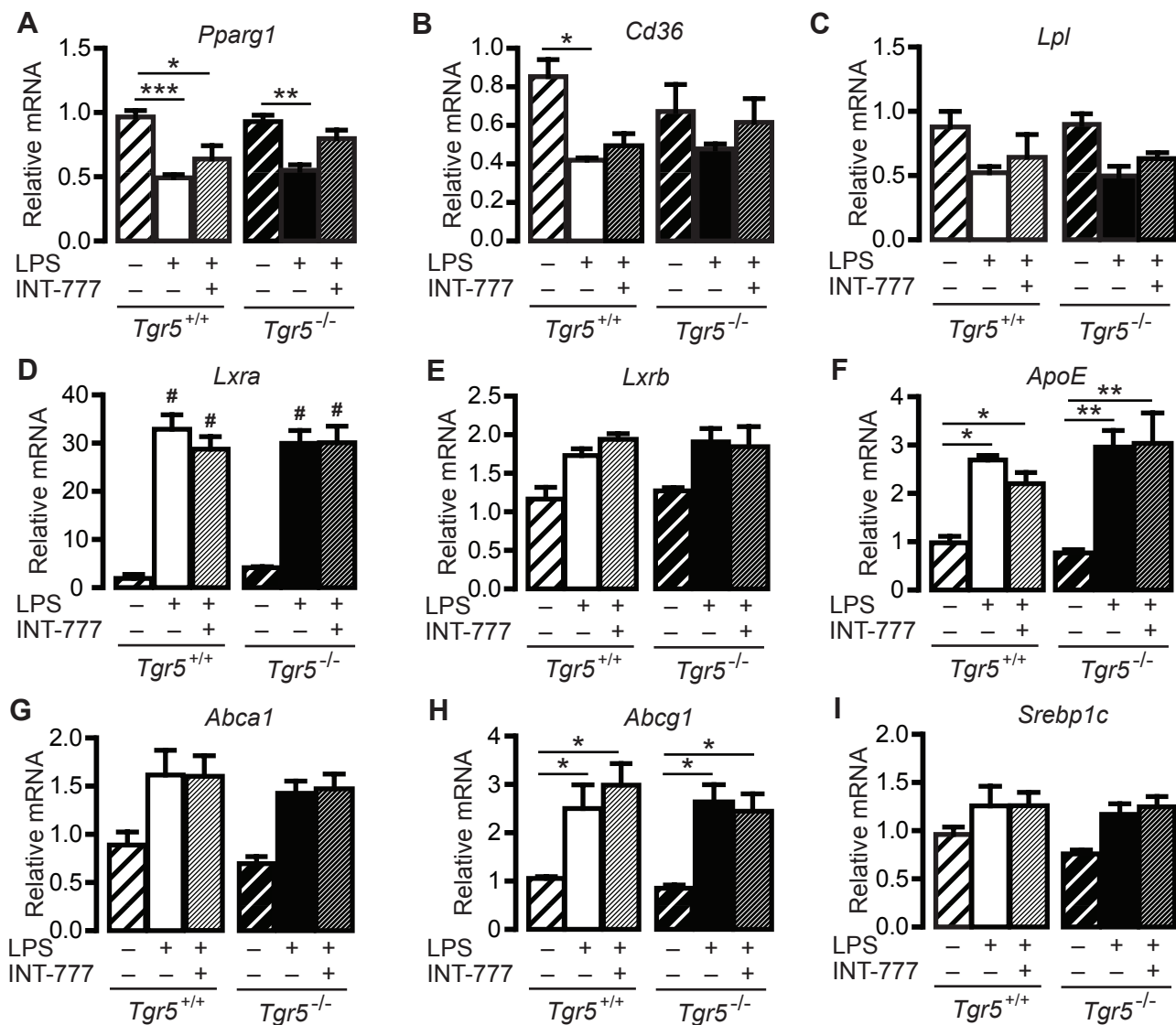
Supplemental Figure 4



Supplemental Figure 4.

Chemokine and chemokine receptor expression in *Tgr5*^{+/+} and *Tgr5*^{-/-} BMDMs. **(A-E)** mRNA levels of chemokines and their cognate receptors in primary bone marrow-derived macrophages (BMDMs) isolated from *Tgr5*^{+/+} or *Tgr5*^{-/-} mice and stimulated with LPS (10 ng/mL) for 24 hr, in presence or absence of the TGR5 agonist INT-777 (30 μM). n=6/group. Results represent the mean±SEM. P values were calculated by using one-way ANOVA test followed by Bonferroni's post hoc analysis. *p<0.05, **p<0.01, ***p<0.001 versus genotype and #p<0.001 versus control.

Supplemental Figure 5



Supplemental Figure 5.

Expression of nuclear receptors and their target genes in *Tgr5*^{+/+} and *Tgr5*^{-/-} BMDMs. **(A-C)** mRNA levels of **(A)** PPAR γ 1 and its target genes **(B)** CD36 and **(C)** Lpl in primary bone marrow-derived macrophages (BMDMs) isolated from *Tgr5*^{+/+} or *Tgr5*^{-/-} mice and stimulated with LPS (10 ng/mL) for 24 hr, in presence or absence of the TGR5 agonist INT-777 (30 μ M). n=6/group. **(D-I)** mRNA levels of **(D)** LXR α , **(E)** LXR β and their target genes **(F)** ApoE, **(G)** Abca1, **(H)** Abcg1 and **(I)** Srebp1c in primary bone marrow-derived macrophages (BMDMs) isolated from *Tgr5*^{+/+} or *Tgr5*^{-/-} mice and stimulated with LPS (10 ng/mL) for 24 hr, in presence or absence of the TGR5 agonist INT-777 (30 μ M). n=6/group. Results represent the mean \pm SEM. P values were calculated by using one-way ANOVA test followed by Bonferroni's post hoc analysis. *p<0.05, **p<0.01, ***p<0.001 versus genotype and #p<0.001 versus control.