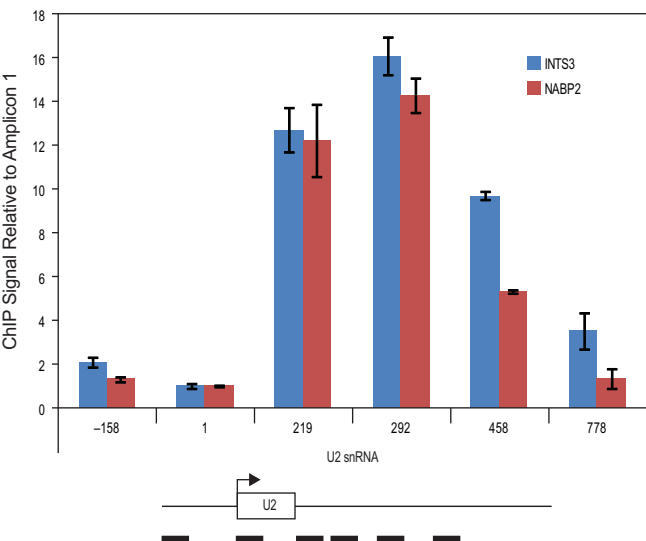
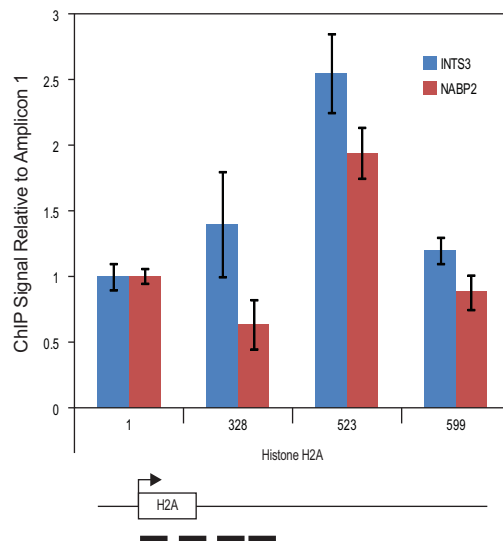


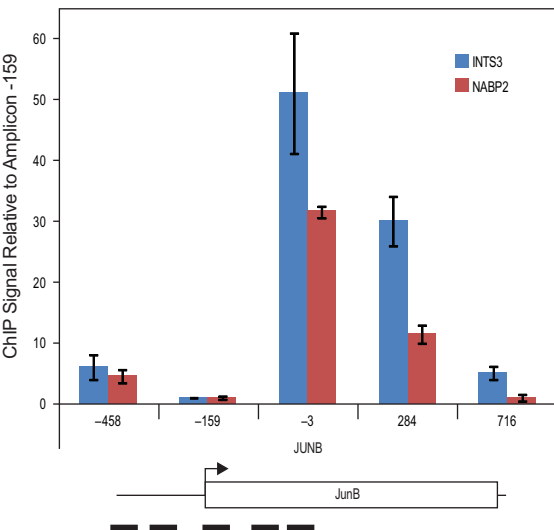
A)



B)



C)



Supplementary information, Figure S4 Integrator binds the 3' end of snRNAs and replication-dependent histones and the 5' end of genes with polyadenylated messages.

A) ChIP was performed from HeLa cells using the indicated antibodies and was analyzed by qPCR for the indicated amplicons at the U2 snRNA locus. All samples were normalized relative to the ChIP signal obtained for the amplicon beginning at +1. Error bars show the standard deviation of three PCR reactions.

B) ChIP was performed from T98G cells using the indicated antibodies and was analyzed by qPCR for the indicated amplicons at the histone H2A locus. All samples were normalized relative to the ChIP signal obtained for the amplicon beginning at +1. Error bars show the standard deviation of three PCR reactions.

C) ChIP was performed from HeLa cells using the indicated antibodies and was analyzed by qPCR for an amplicon at the *JUNB* transcriptional start site. All samples were normalized relative to the ChIP signal obtained for the amplicon beginning at -159. Error bars show the standard deviation of three PCR reactions.