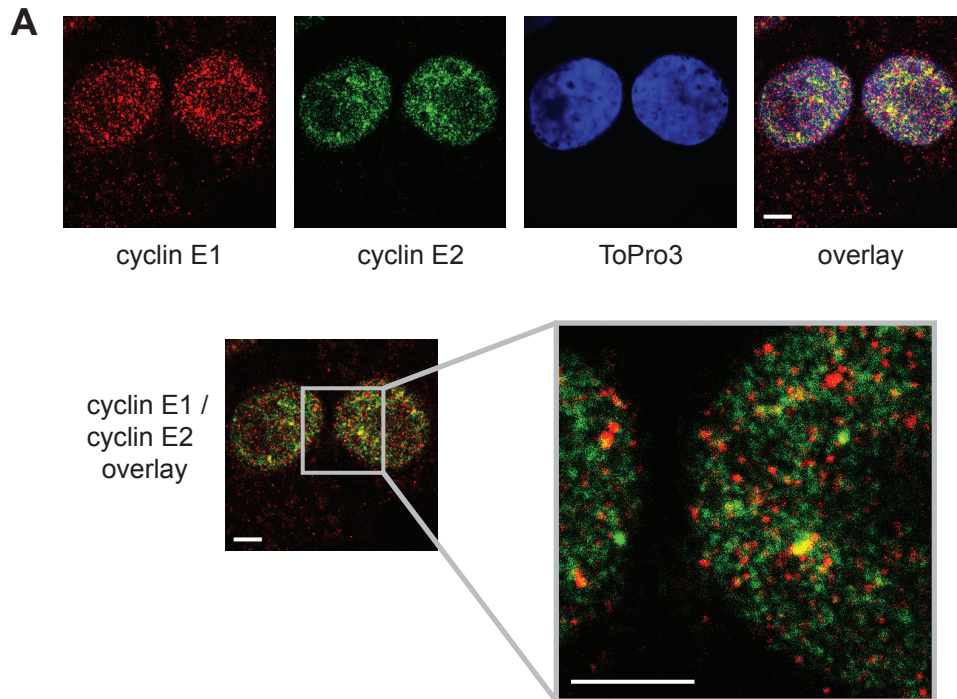


## Additional File 1: Cyclin E1 and cyclin E2 localise to distinct nuclear foci in MCF-7 cells



### Additional File 1 – Cyclins E1 and E2 localise to distinct nuclear foci in MCF-7 cells

A. Confocal images of MCF-7 breast cancer cells immunoprobed with cyclin E1 (red) or cyclin E2 (green), and counterstained with ToPro3 (blue, nuclei). Inset at higher magnification. Scale bars = 5  $\mu\text{m}$ . Experiments are performed in triplicate.