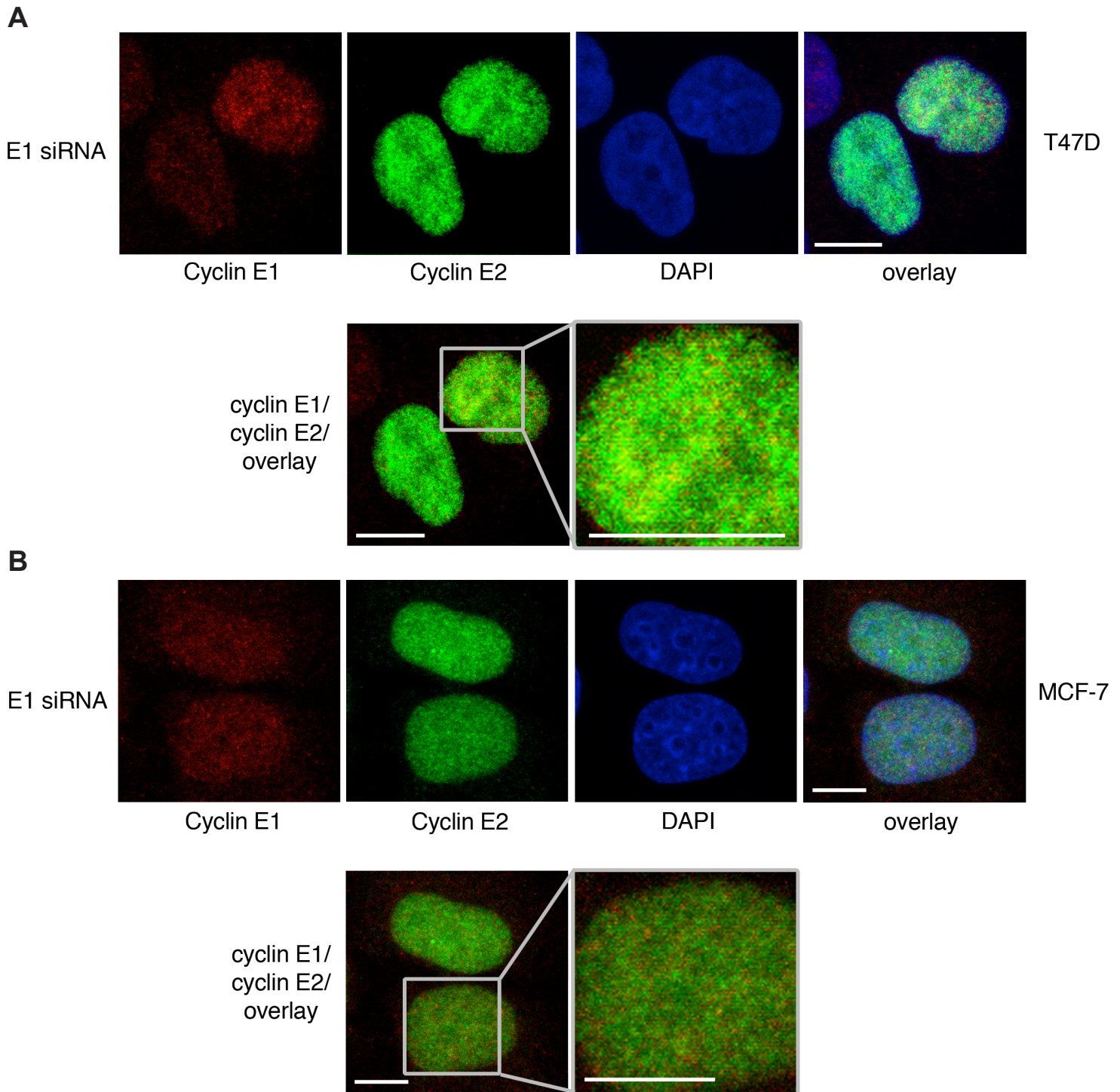


### Additional File 4: Specific immunostaining for cyclin E2 in the presence of cyclin E1 siRNA



#### Additional File 4 – Specific immunostaining for cyclin E2 in the presence of cyclin E1 siRNA

Breast cancer cells were transfected with 20nm cyclin E1 siRNA for 48h as described in [19]. Confocal images of MCF-7 cells (A.) and T-47D cells (B.) immunoprobed with cyclin E1 (red), cyclin E2 (green) and DAPI (blue). Inset at higher magnification. Experiments performed in duplicate. Scale bars = 10 $\mu$ m.