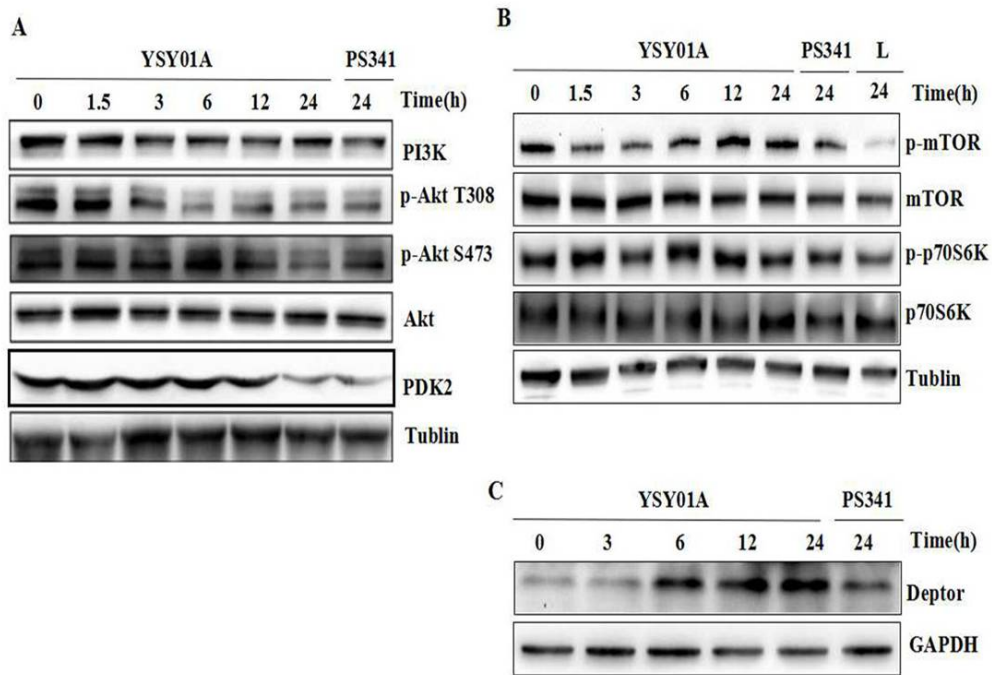


**S 1** YSY01A induces pivotal proteins involved in cell cycle transition and ER $\alpha$  in MCF-7 cells. After treatment of 40 nM YSY01A for 3, 6, 12 and 24 hrs or 40 nM PS341 for 24 hrs, expression of the cell cycle markers (A), cell cycle proteins (B) and ER $\alpha$  (C) were evaluated. Cell lysates were fractionated on SDS-polyacrylamide gels and analyzed by Western blotting with antibodies against cell cycle associated proteins. Tubulin was used as a loading control.



**S 2.** YSY01A modulates expression of PI3K pathway-related proteins. MCF-7 cells were treated with YSY01A at 40 nM for different hrs as directed and then subject for Western blotting analysis. L represented the positive control medicine rapamycin. Tubulin was used as a loading control.