

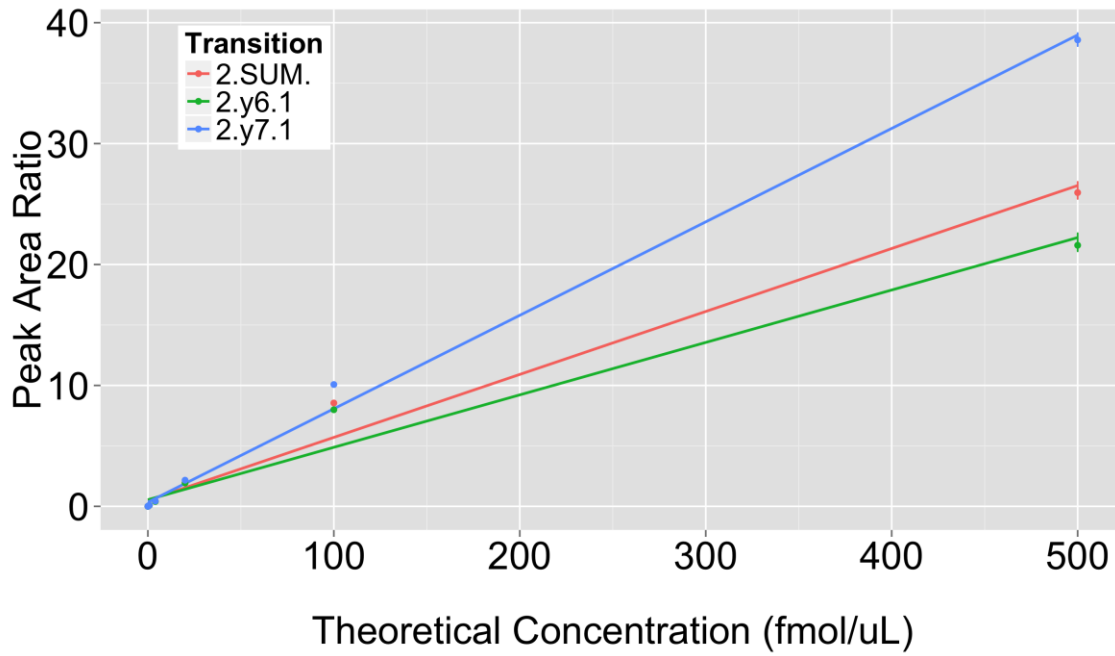
**Supplemental Figure 2. Immuno-MRM response curves plotted in linear and log space.** The heavy-to-light peak area ratios for the peptide's transitions are plotted vs. the heavy peptide's theoretical concentration. The abbreviations (e.g. 2.y6.1) refer to the precursor ion's charge state (+2), followed by the transition ion and the transition ion's charge state (+1); 2.SUM. refers to the response curve for which the peak areas of all transitions were summed before taking the peak area ratios; the error bars indicate the minimum and maximum (i.e., range) of the peak area ratios of the three capture and LC-MRM-MS replicates.

**Table of contents (giving the target peptide ID, the gene symbol, and the target peptide sequence):**

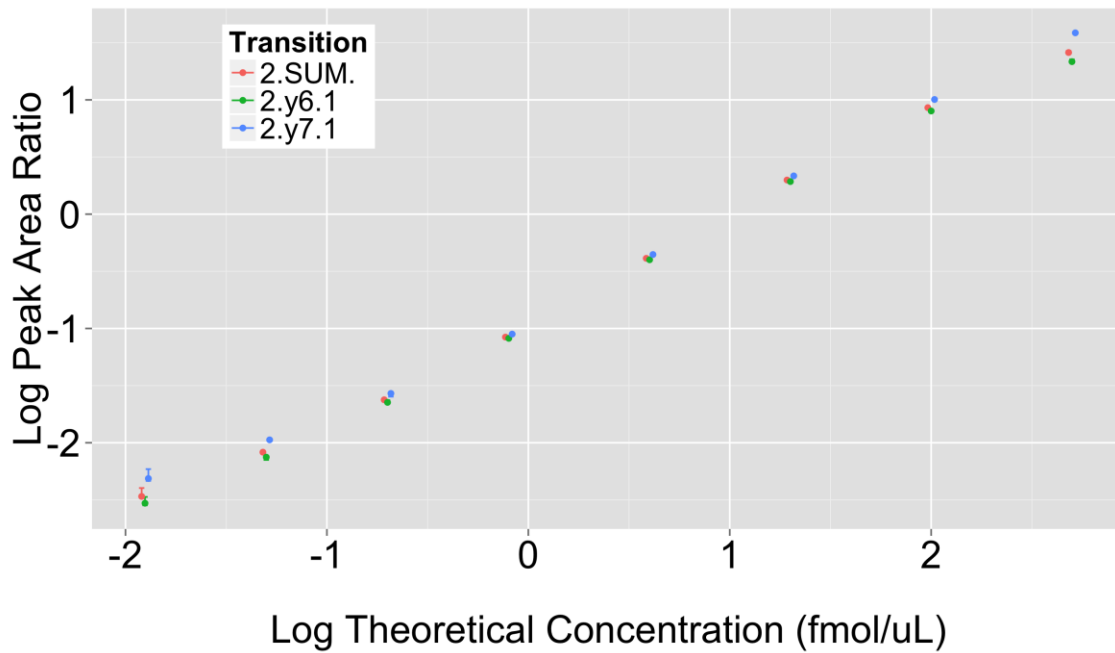
SAIC-01B, CD44, TFIPVTSAK.....	3
SAIC-02A, ERBB2, GLQSLPTHDPSPQLR.....	4
SAIC-07B, XPNPEP1, GSLTFEPLTLVPIQTK.....	5
SAIC-07E, XPNPEP1, TSLDEVYLIDSGAQYK.....	6
SAIC-13B, ANXA1, AAYLQETGKPLDETLK.....	7
SAIC-13C, ANXA1, GVDEATIIDILTK.....	8
SAIC-14C, ANXA4, DEGNYLDDALVR.....	9
SAIC-16D, CALR, GLQTSQDAR.....	10
SAIC-19D, GRB2, FGNDVQHFK.....	11
SAIC-21C, FEN1, SIEEIVR.....	12
SAIC-22D, GSTP1, YISLIYTNYEAGK.....	13
SAIC-23B, HSPB1, DGVVEITGK.....	14
SAIC-23C, HSPB1, VSLDVNHFAPDELTVK.....	15
SAIC-23E, HSPB1, LFDQAFGLPR.....	16
SAIC-24B, IL18, ISTLSCENK.....	17
SAIC-25B, LGALS1, SFVLNLGK.....	18
SAIC-26C, NFKB2, IEVDLVTHSDPPR.....	19
SAIC-27C, PCNA, LVQGSILK.....	20
SAIC-28A, RAD23B, ILNDDTALK.....	21
SAIC-28B, RAD23B, IDIDPEETVK.....	22
SAIC-30C, RRM2, IEQEFLTEALPVK.....	23
SAIC-30E, RRM2, DIQHWESLKPEER.....	24

SAIC-31A, SNCG, TVEEAENIAVTSGVVR.....	25
SAIC-32C, FSCN1, YLAPSGPSGTLK.....	26
SAIC-33B, TAGLN, AAEDYGVIK.....	27
SAIC-34B, PRDX2, LSEDYGVLK.....	28
SAIC-34D, PRDX2, GLFIIDGK.....	29
SAIC-36A, UBE2I, DHPFGFVAVPTK.....	30
SAIC-37C, EZR, SGYLSSER.....	31
SAIC-40A, PRDX4, QITLNDLPVGR.....	32
SAIC-40C, PRDX4, LVQAFQYTDK.....	33
SAIC-41A, UBE2C, GISAFPESDNLFK.....	34
SAIC-41C, UBE2C, LSLEFPSGYPYNAPTvk.....	35
SAIC-42B, SERPINA6, AQLLQGLGFNLTER.....	36
SAIC-43B, CLU, ASSIIDELFQDR.....	37
SAIC-101A, TSHB, YALSQDVCTYR.....	38
SAIC-101D, TSHB, SYLVGFSV.....	39
SAIC-102A, CGB, VLQGVLPALPQVVCNYR.....	40
SAIC-103A, MUC1, EGTINVHDVETQFNQYK.....	41
SAIC-103B, MUC1, NYGQLDIFPAR.....	42

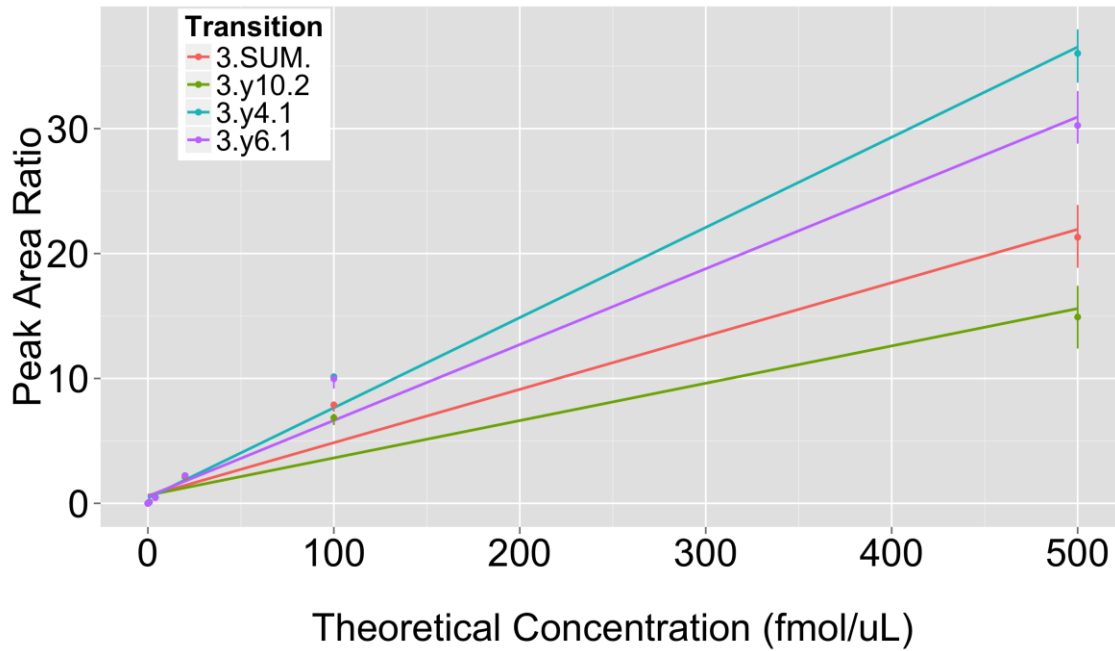
### Analyte: SAIC01B.TFIPVTSAK



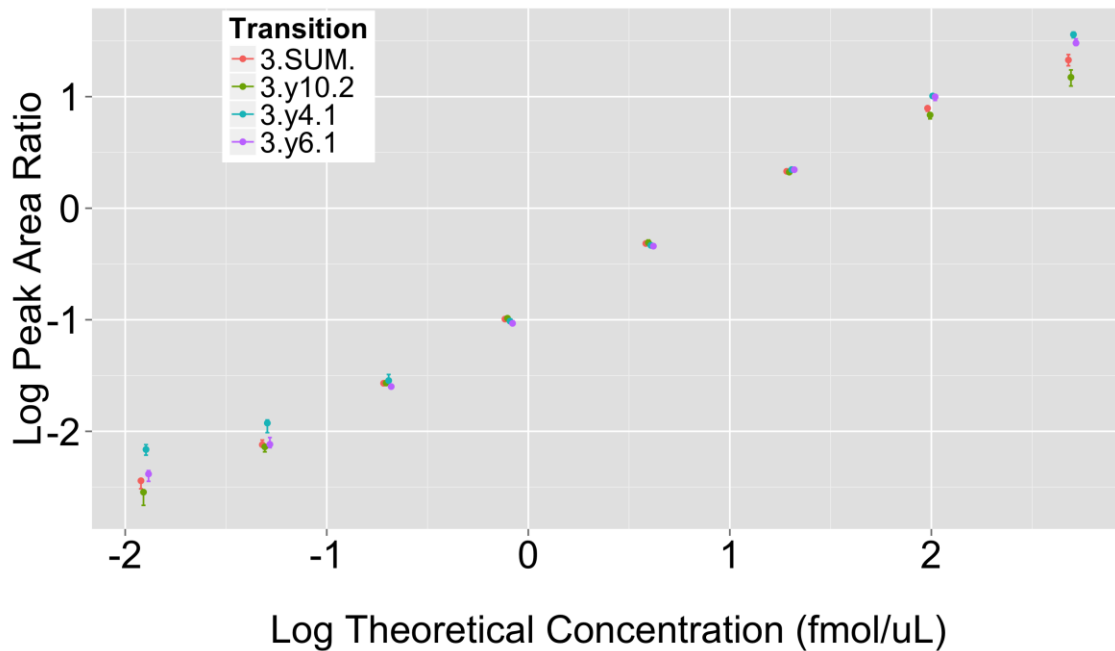
### Analyte: SAIC01B.TFIPVTSAK



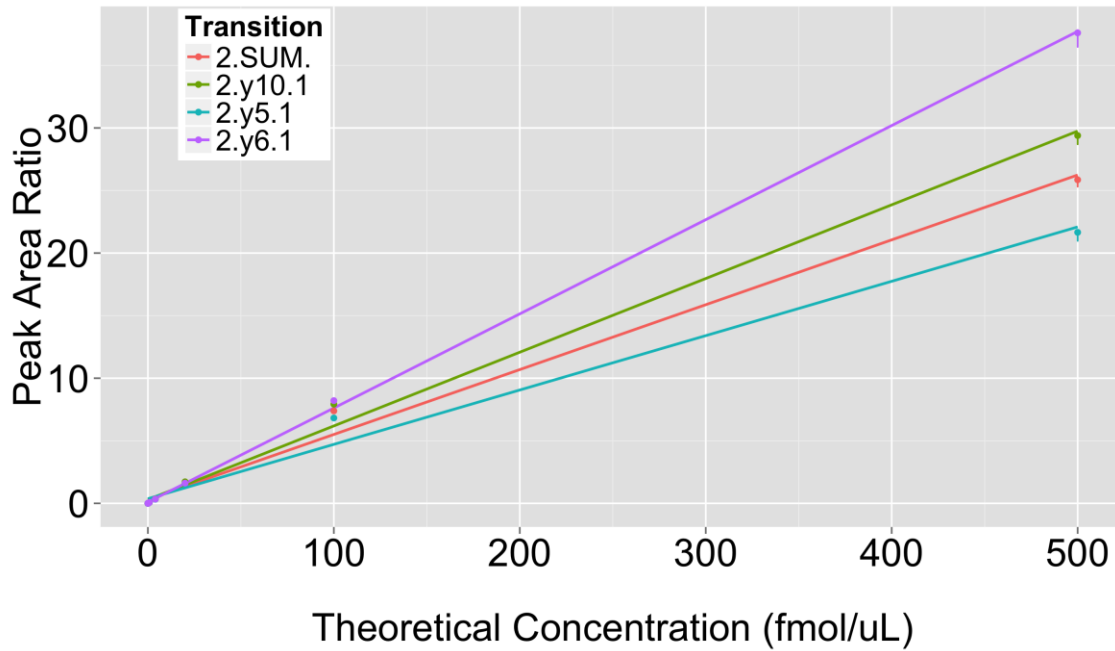
### Analyte: SAIC02A.GLQSLPTHDPSPQLQR



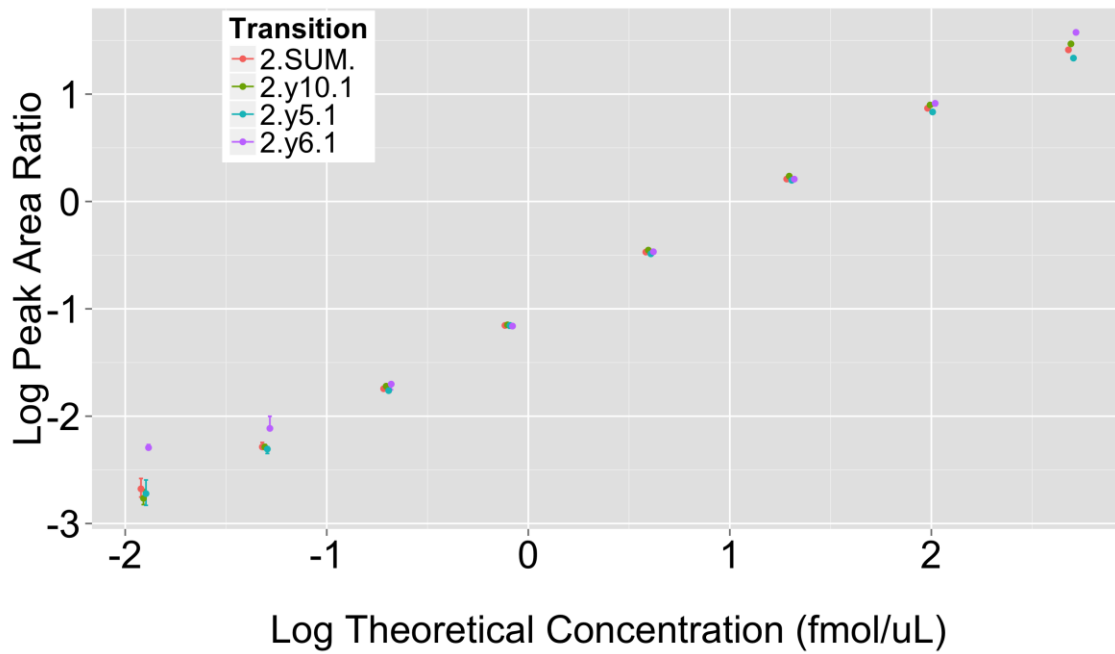
### Analyte: SAIC02A.GLQSLPTHDPSPQLQR



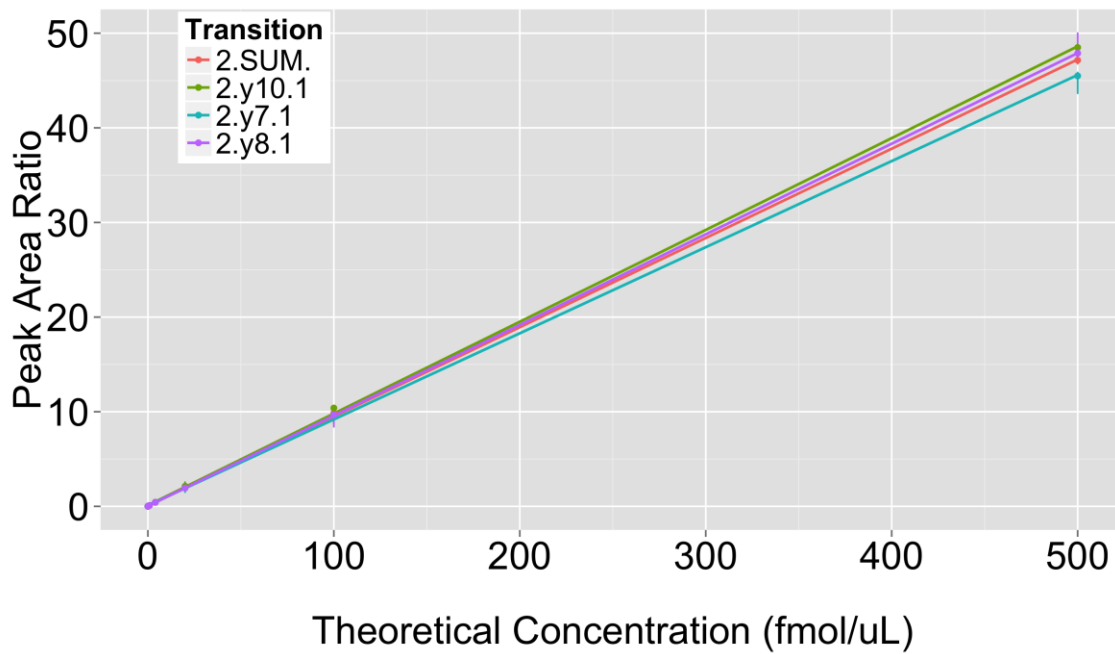
### Analyte: SAIC07B.GSLTFEPLTLVPIQTK



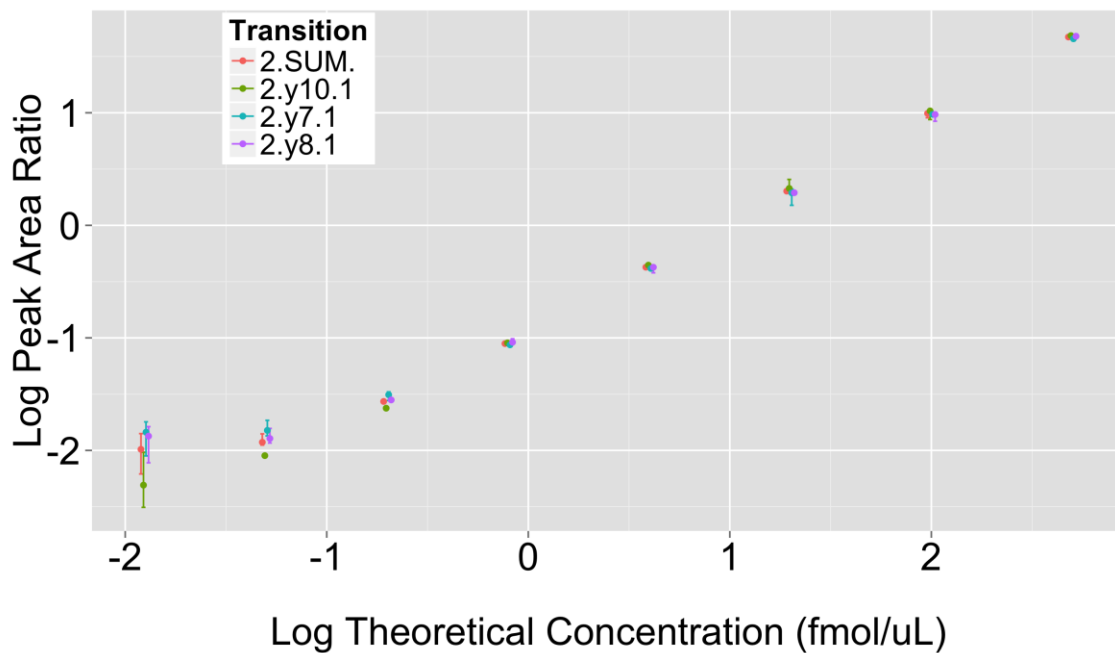
### Analyte: SAIC07B.GSLTFEPLTLVPIQTK



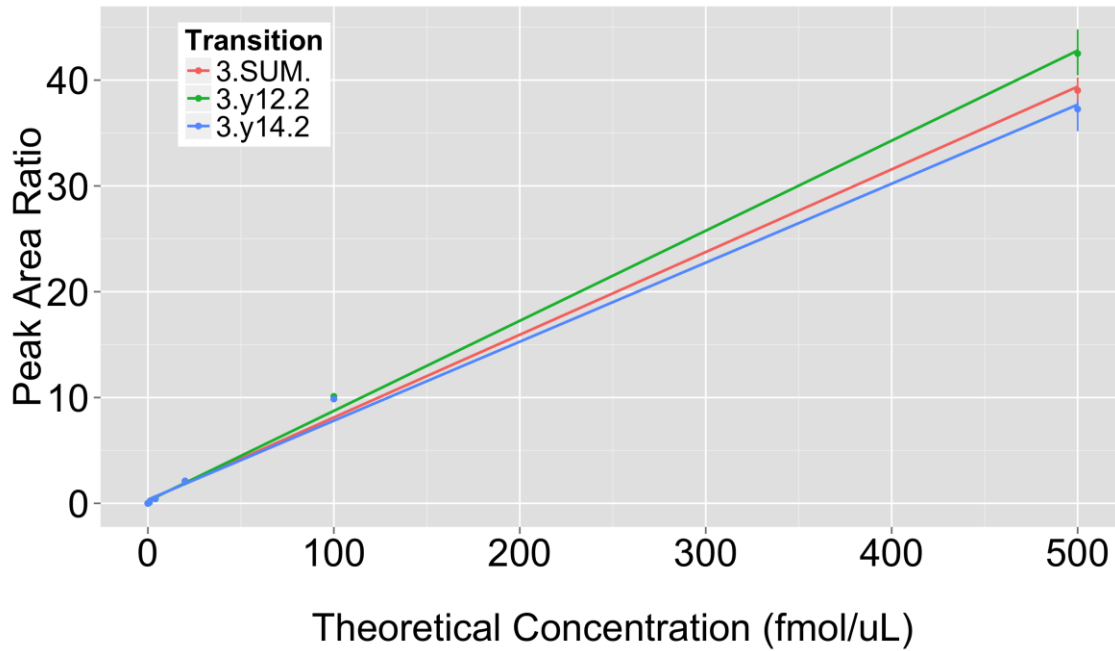
### Analyte: SAIC07E.TLSLDEVYLIDSGAQYK



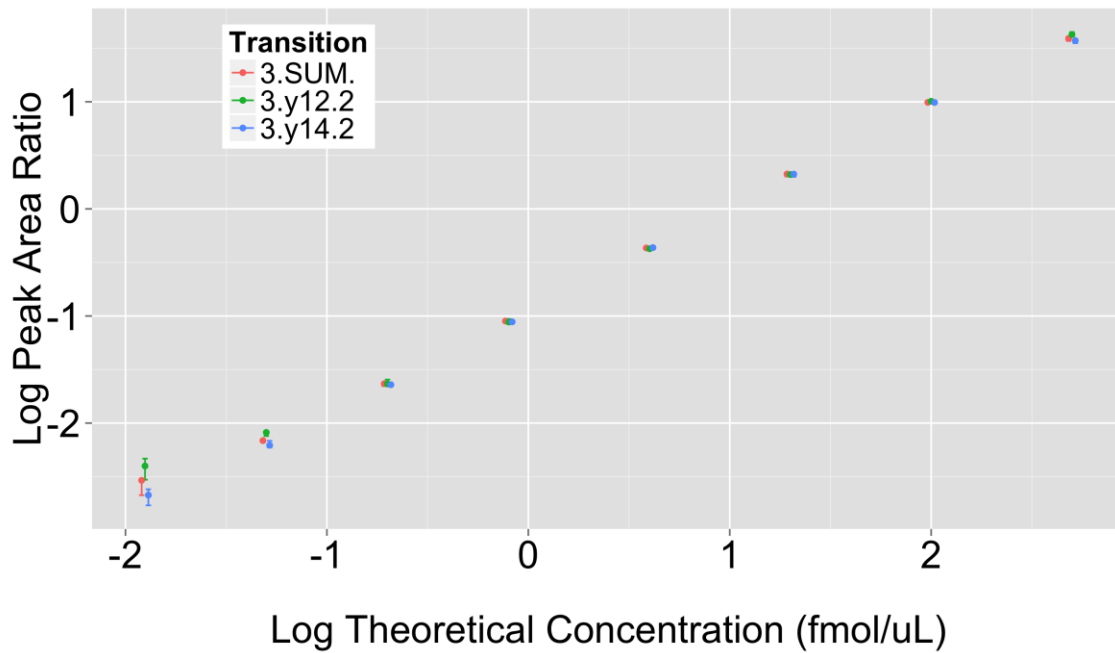
### Analyte: SAIC07E.TLSLDEVYLIDSGAQYK



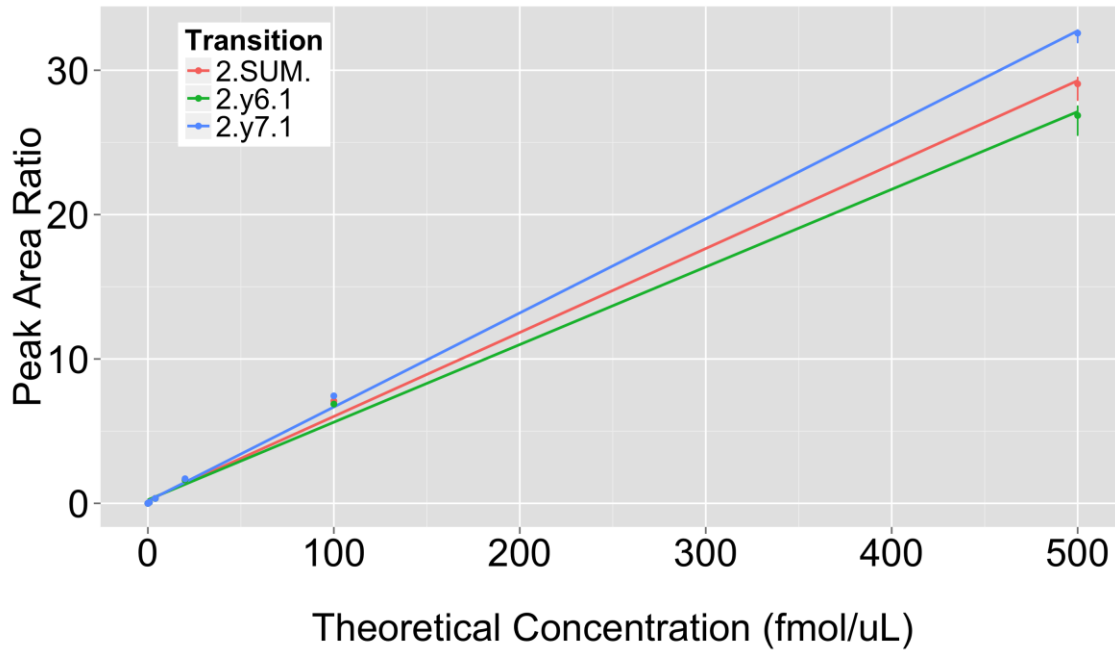
### Analyte: SAIC13B.AAYLQETGKPLDETLK



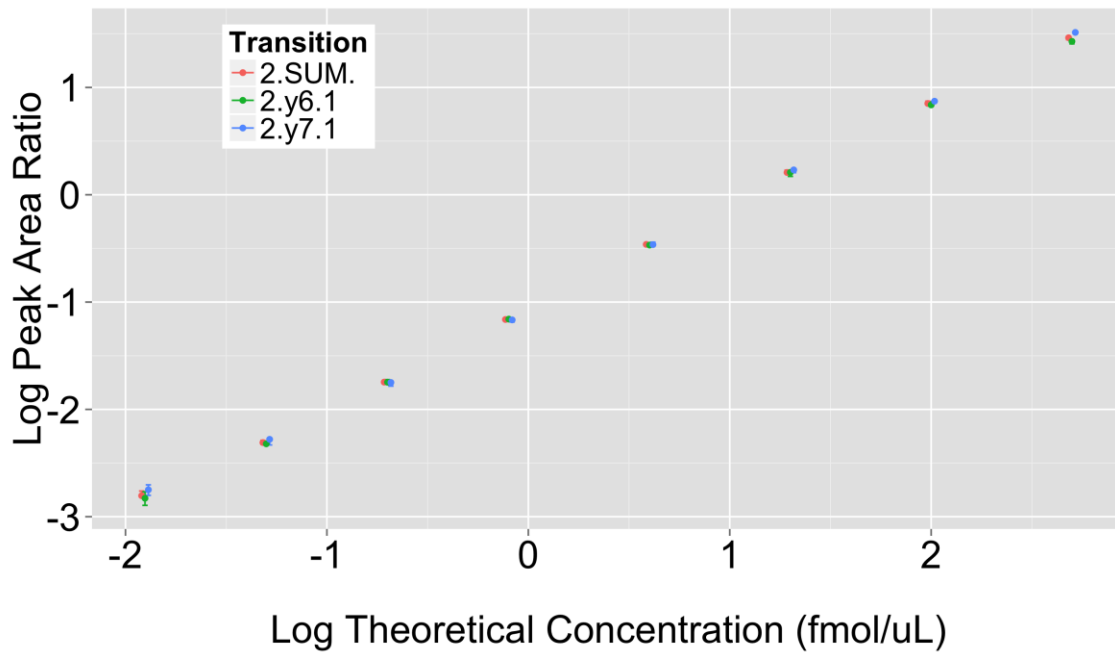
### Analyte: SAIC13B.AAYLQETGKPLDETLK



### Analyte: SAIC13C.GVDEATIIDILTK

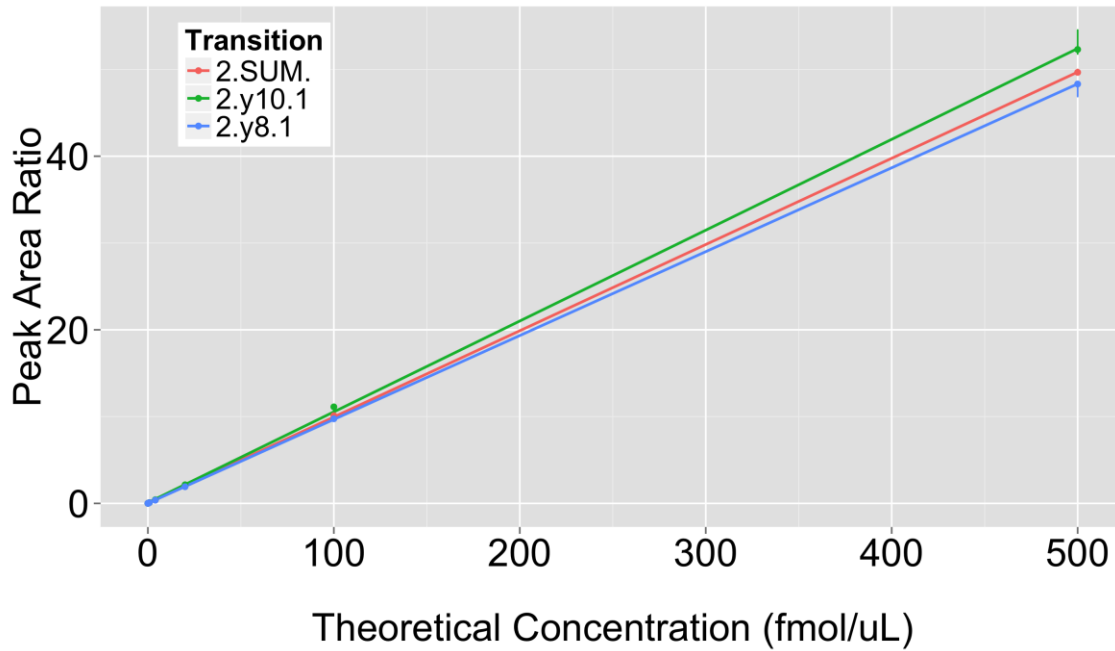


### Analyte: SAIC13C.GVDEATIIDILTK

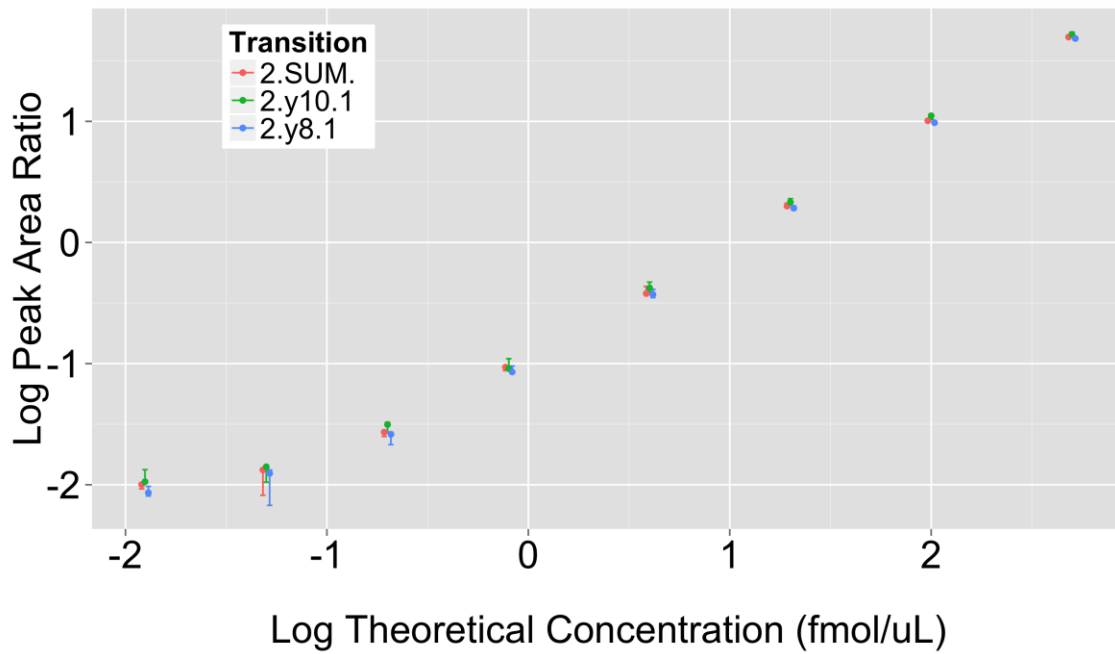




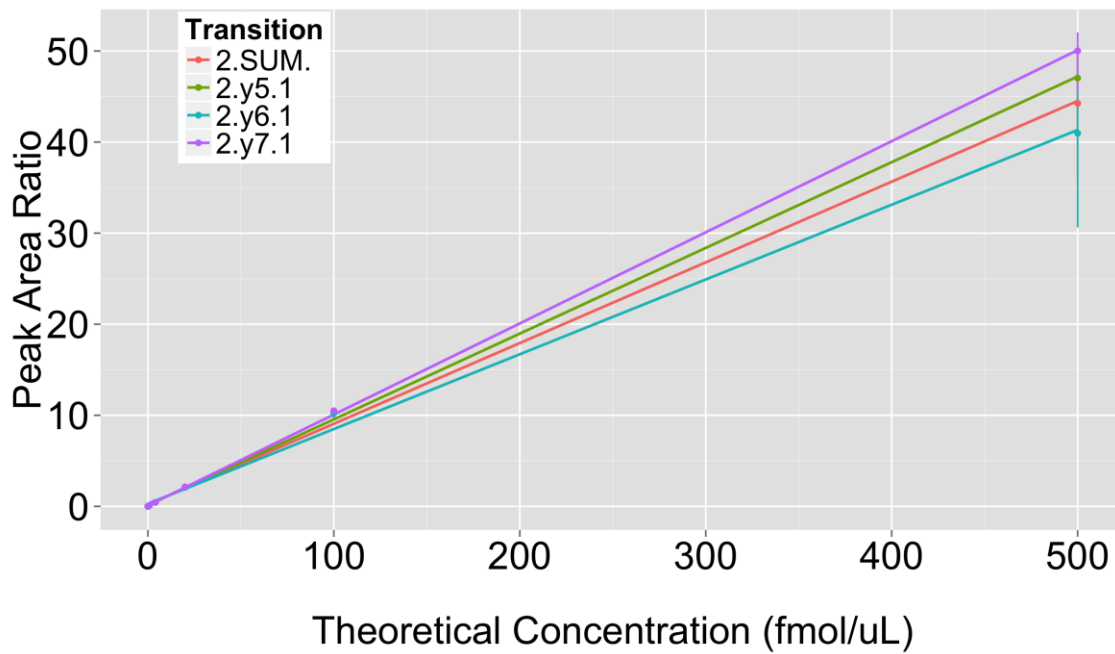
### Analyte: SAIC14C.DEGNYLDDALVR



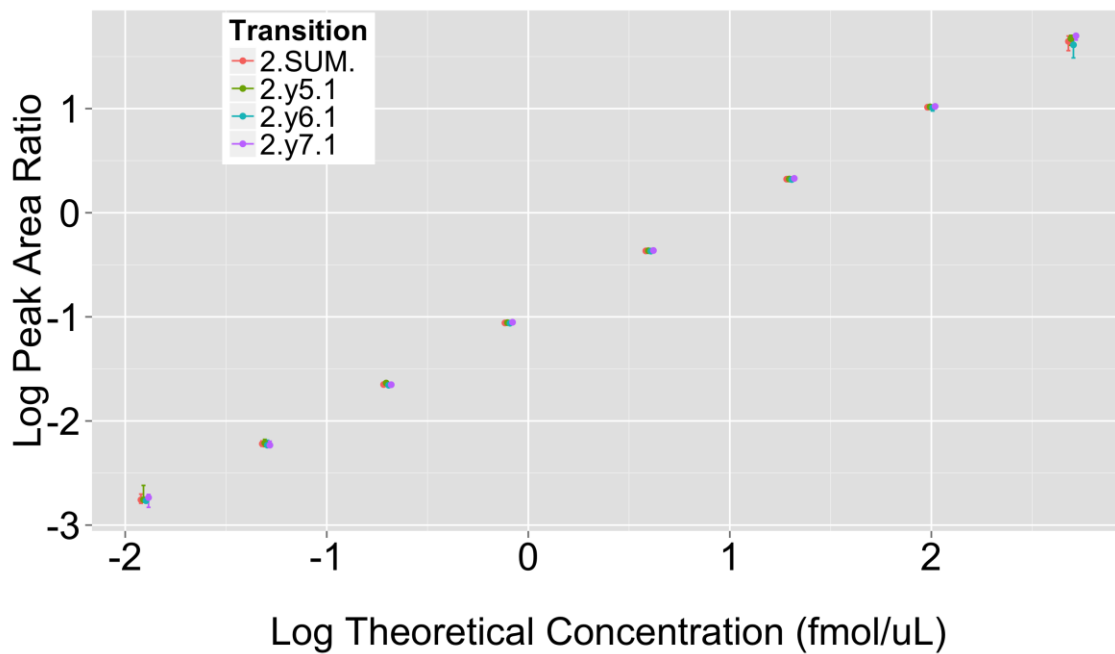
### Analyte: SAIC14C.DEGNYLDDALVR



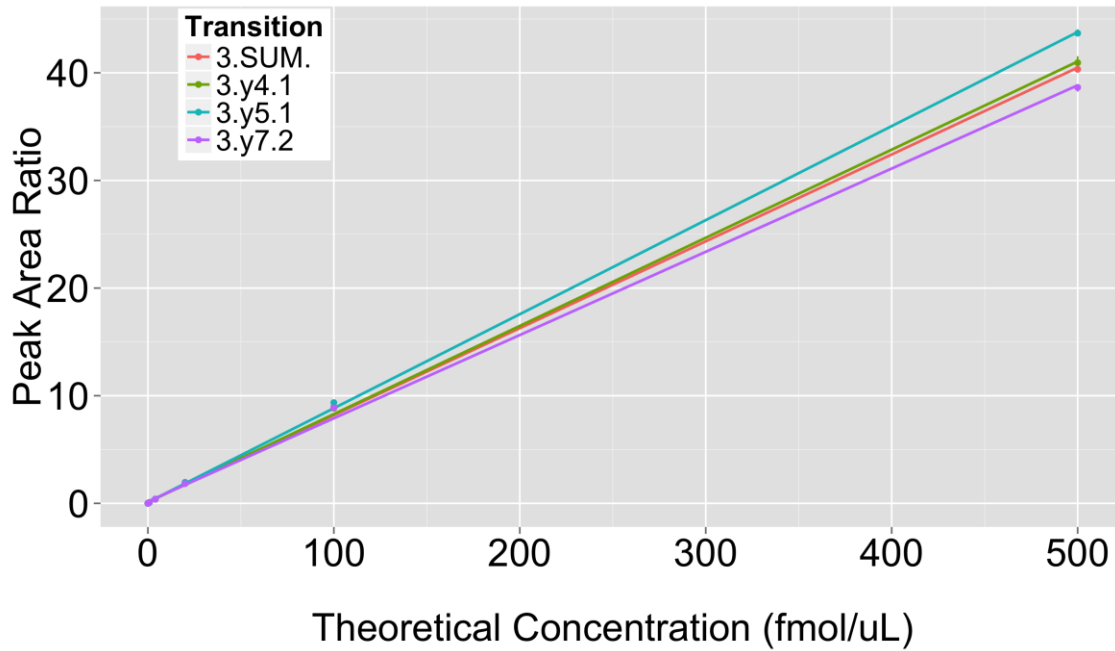
### Analyte: SAIC16D.GLQTSQDAR



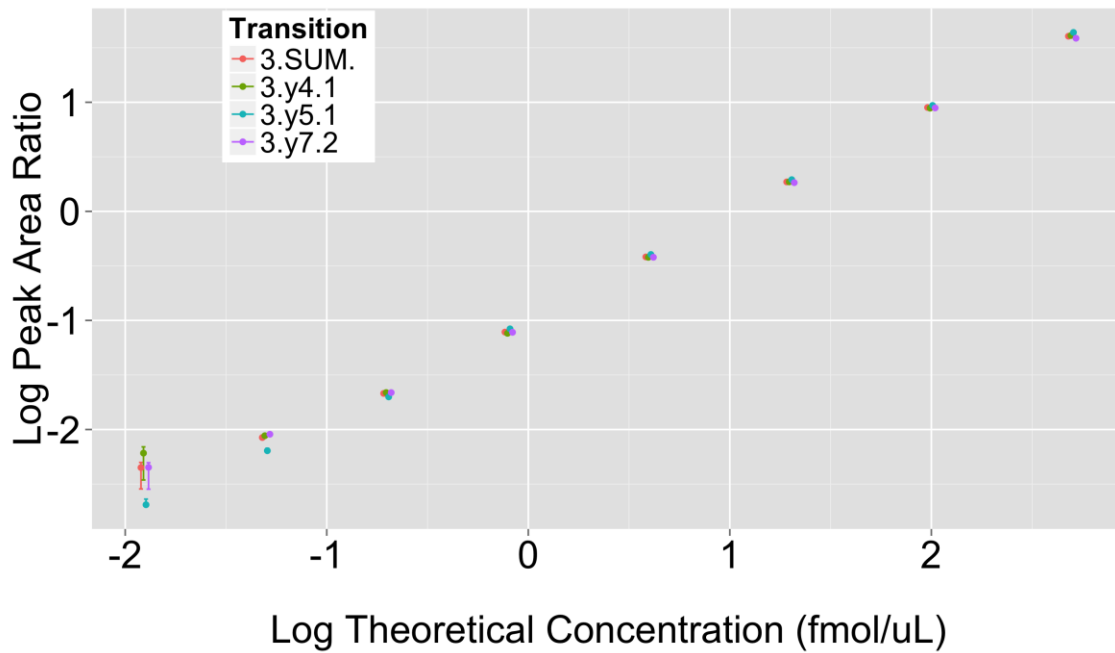
### Analyte: SAIC16D.GLQTSQDAR



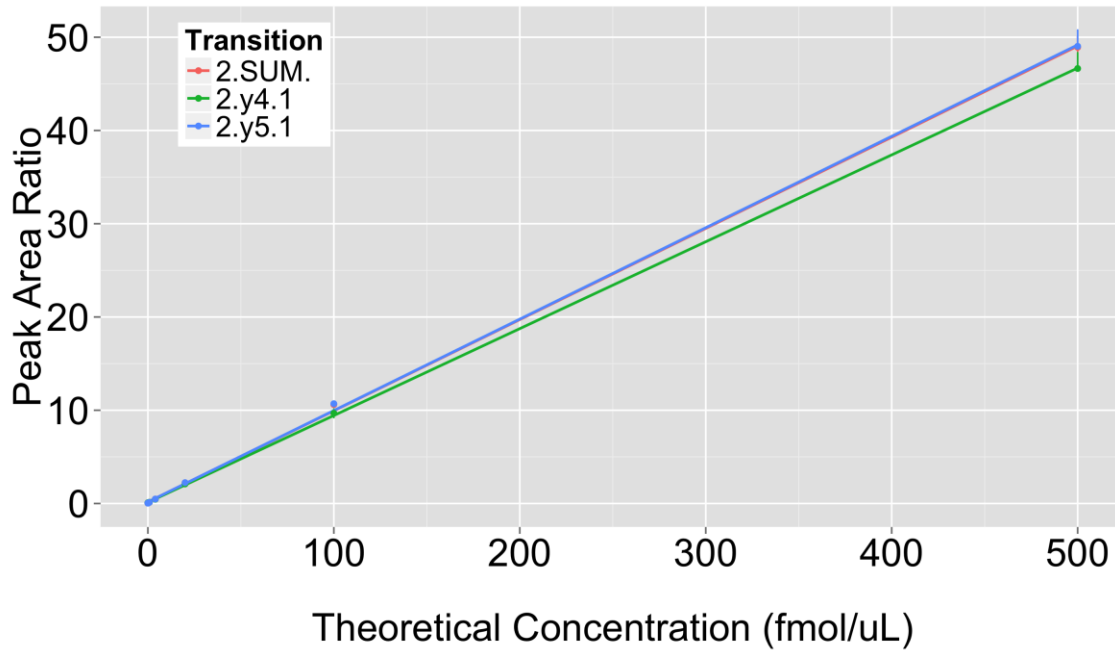
### Analyte: SAIC19D.FGNDVQHFK



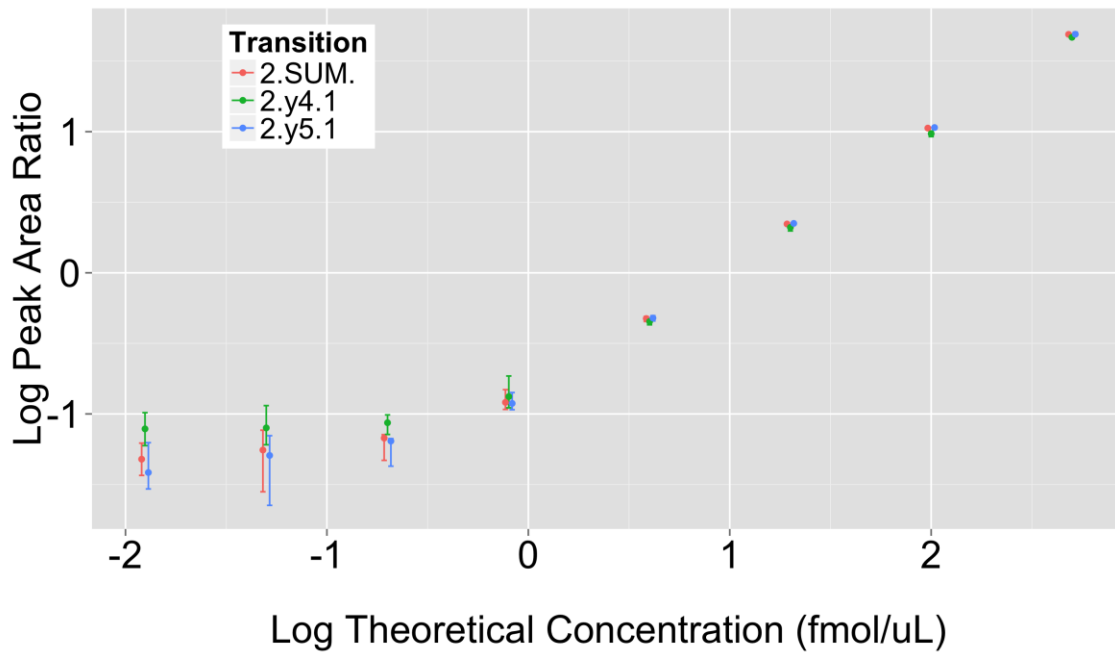
### Analyte: SAIC19D.FGNDVQHFK



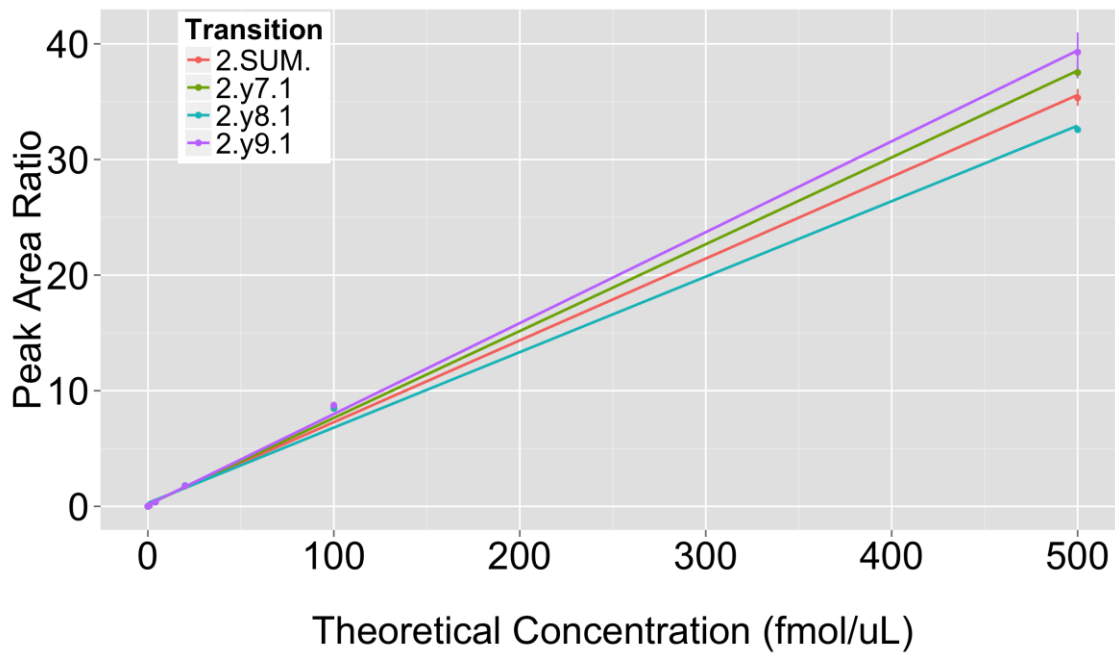
### Analyte: SAIC21C.SIEEIVR



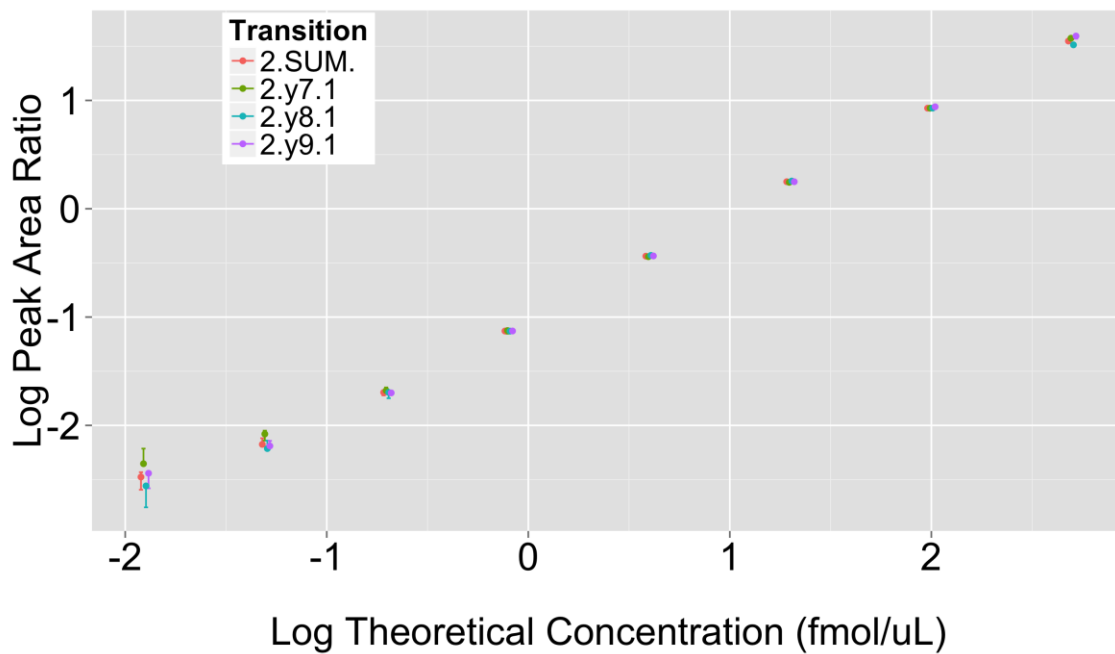
### Analyte: SAIC21C.SIEEIVR



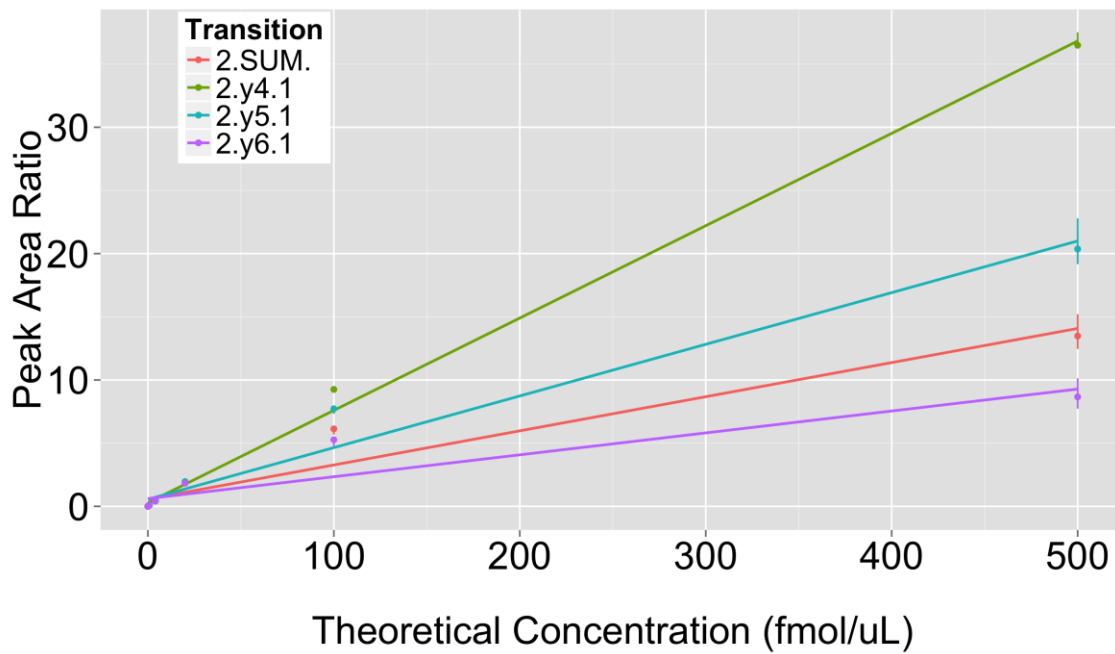
### Analyte: SAIC22D.YISLIYTNYEAGK



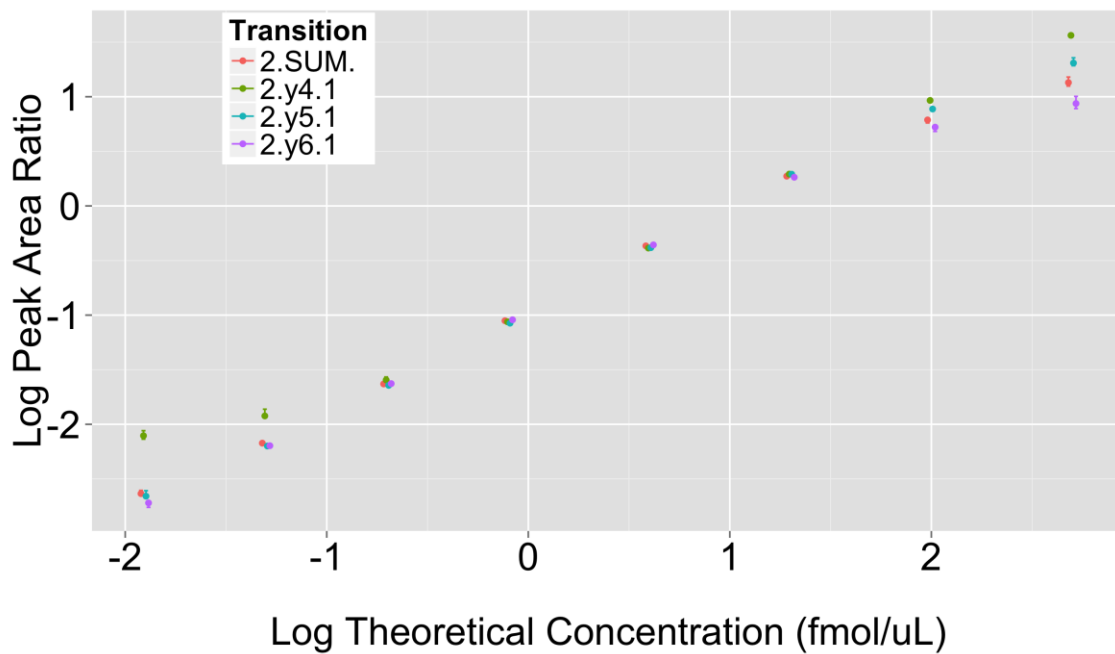
### Analyte: SAIC22D.YISLIYTNYEAGK



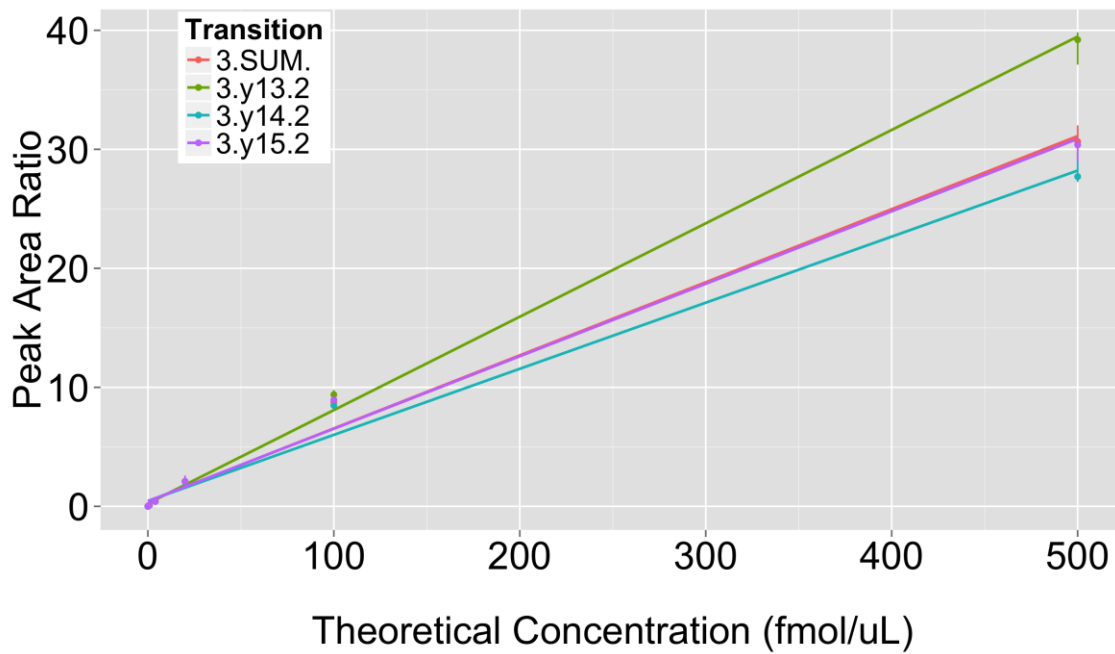
### Analyte: SAIC23B.DGVVEITGK



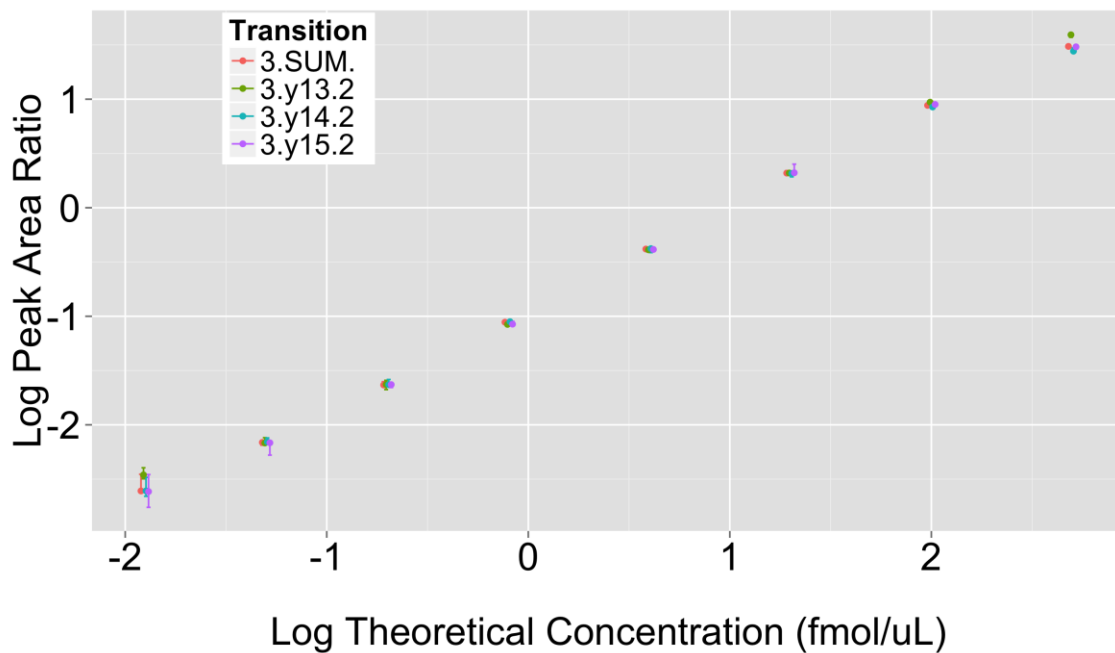
### Analyte: SAIC23B.DGVVEITGK



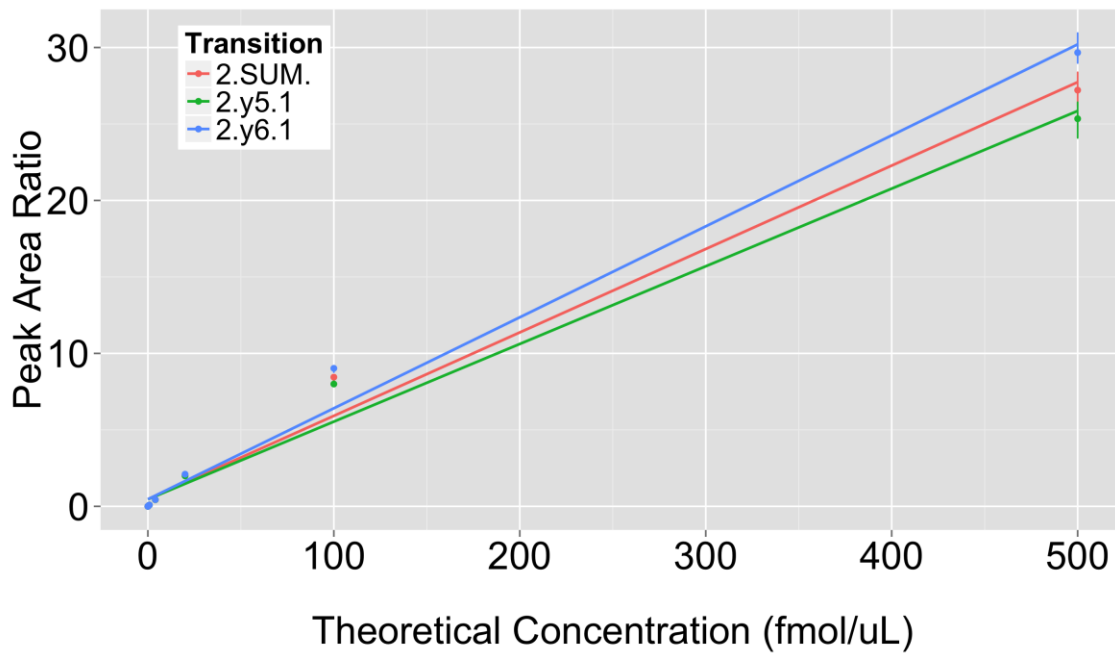
### Analyte: SAIC23C.VSLDVNHFAPDELTVK



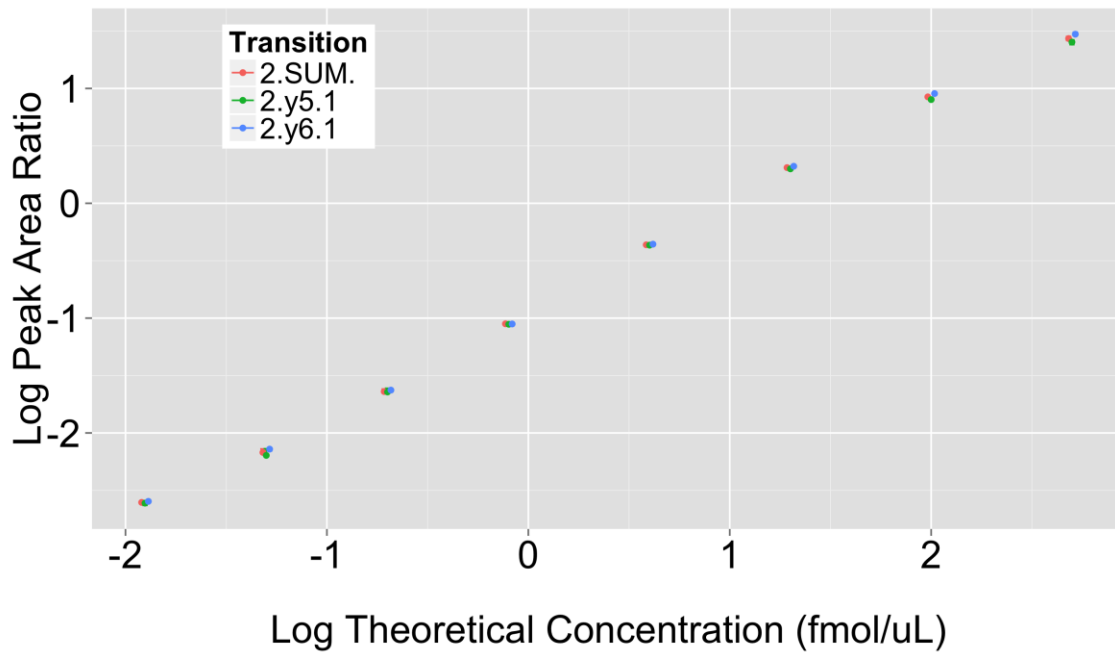
### Analyte: SAIC23C.VSLDVNHFAPDELTVK



### Analyte: SAIC23E.LFDQAFGLPR

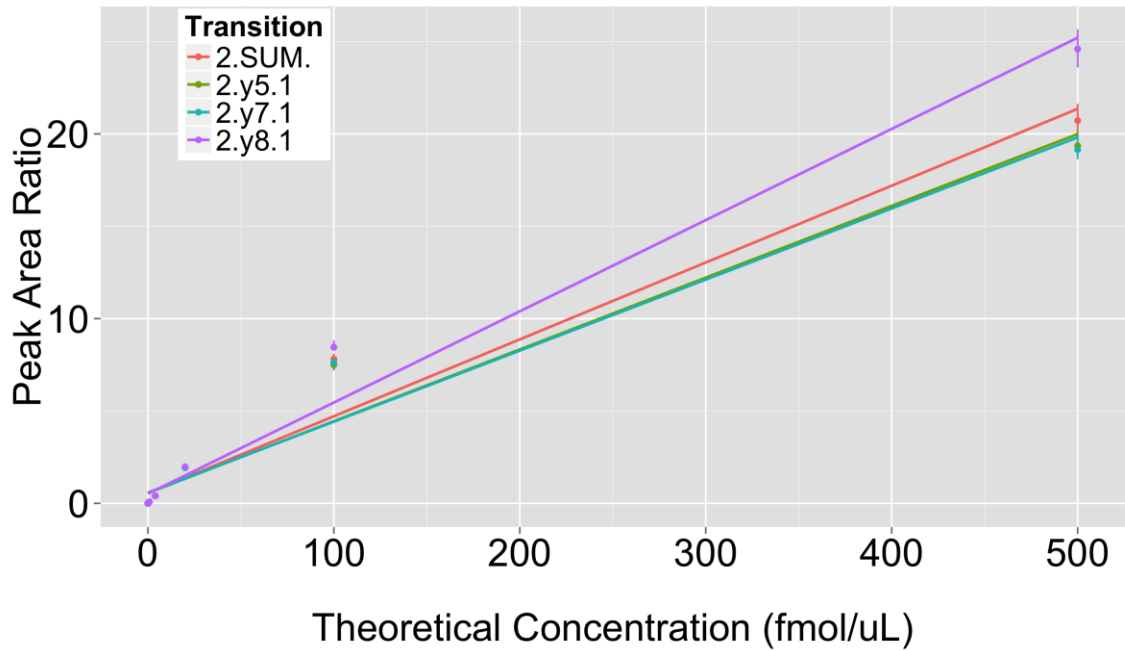


### Analyte: SAIC23E.LFDQAFGLPR

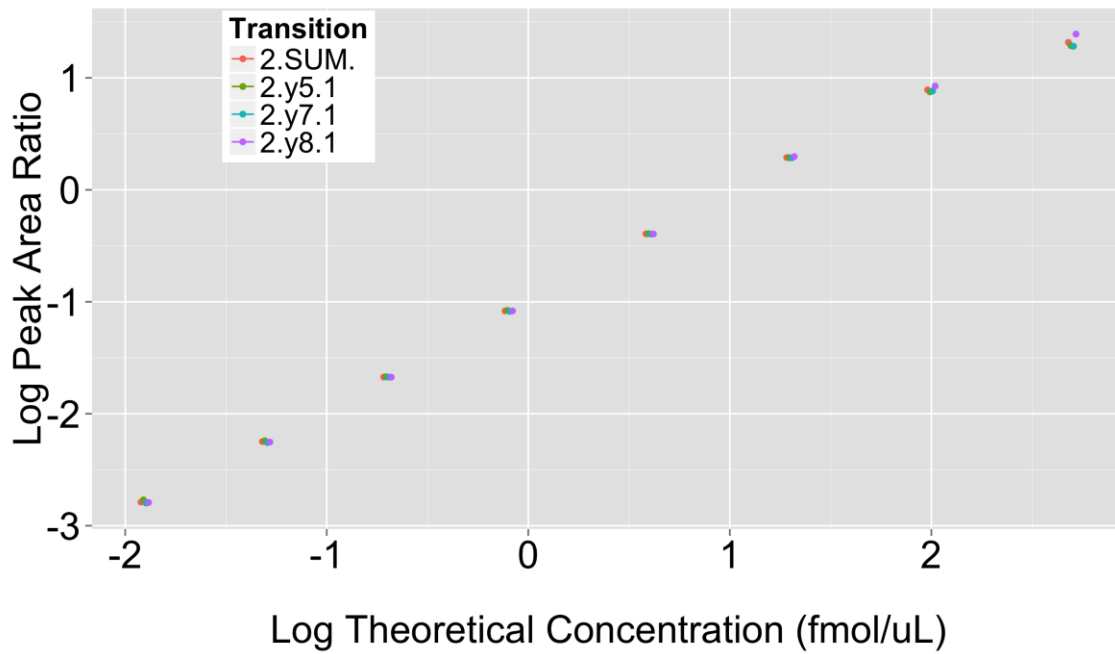




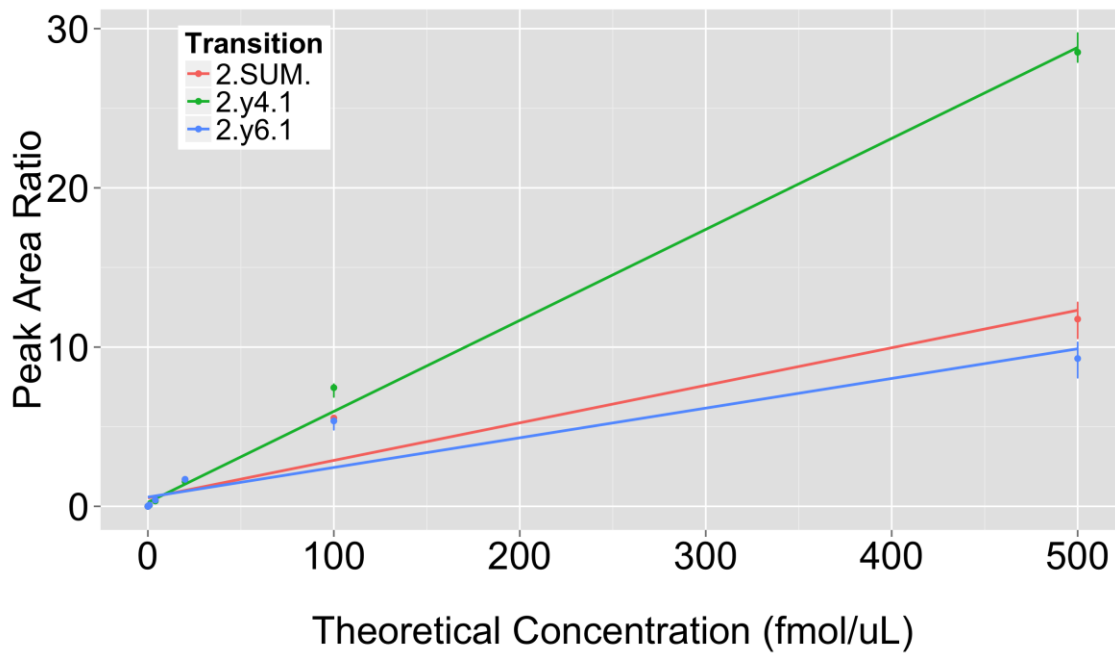
### Analyte: SAIC24B.ISTLSC[+57]ENK



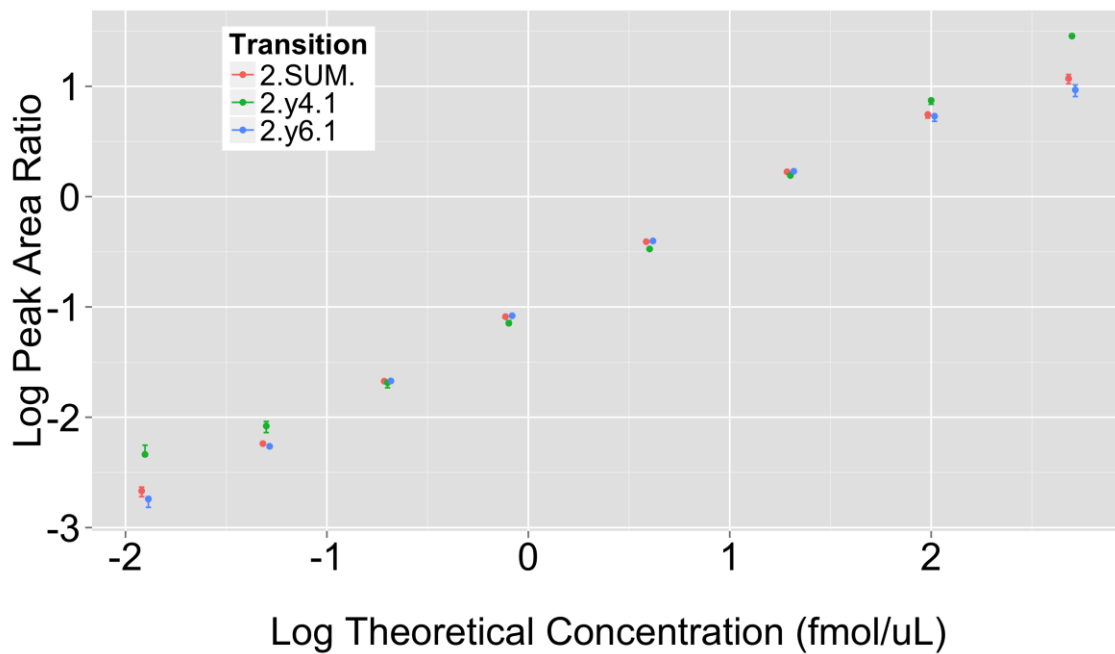
### Analyte: SAIC24B.ISTLSC[+57]ENK



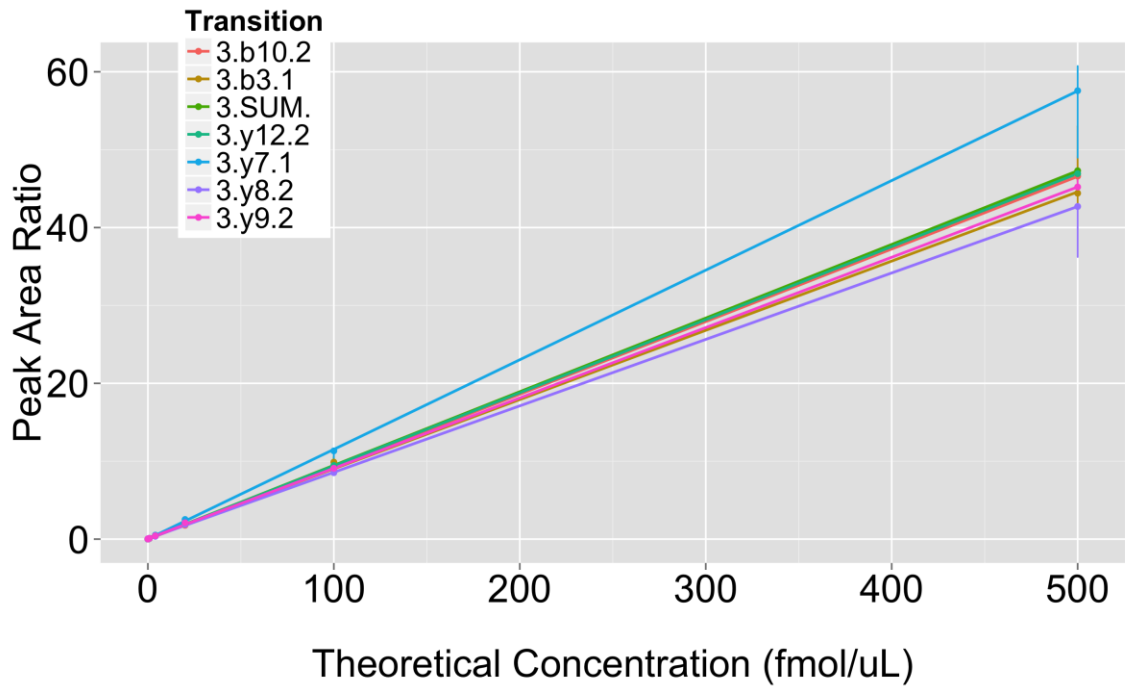
### Analyte: SAIC25B.SFVLNLGK



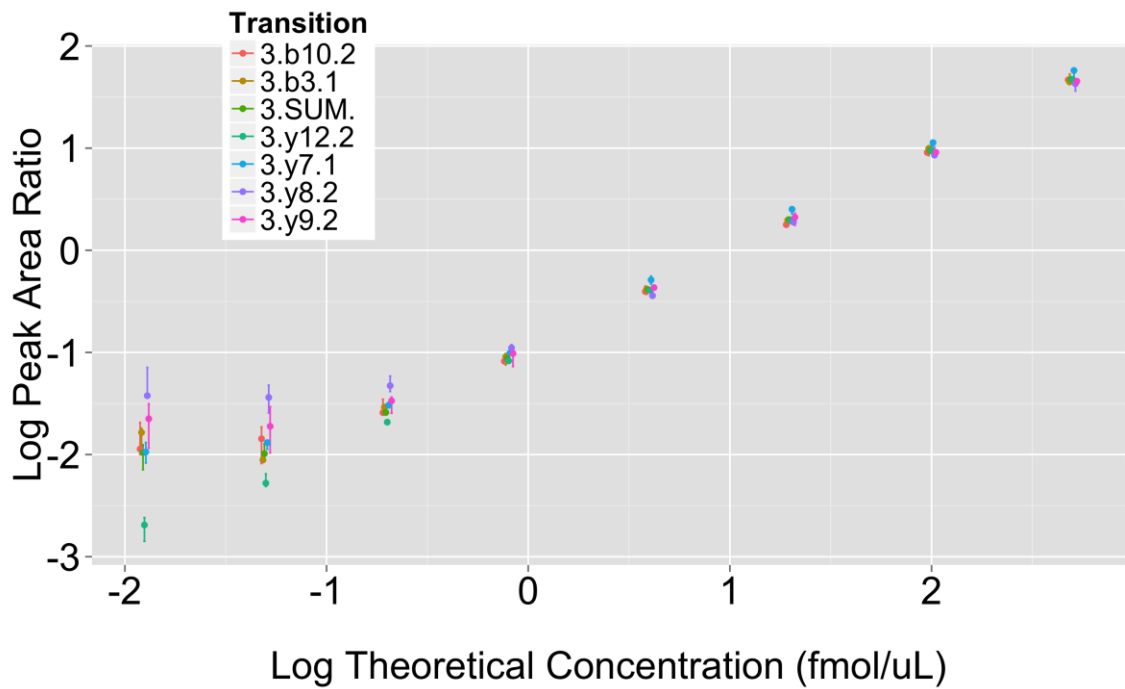
### Analyte: SAIC25B.SFVLNLGK



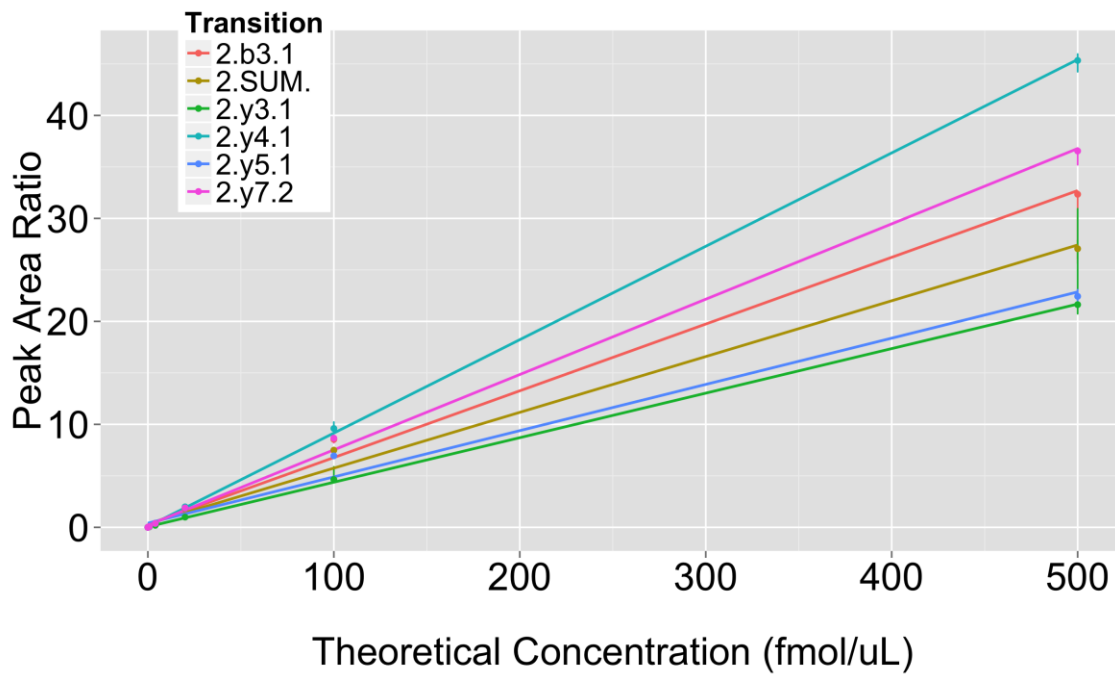
### Analyte: SAIC26C.IEVDLVTHSDPPR



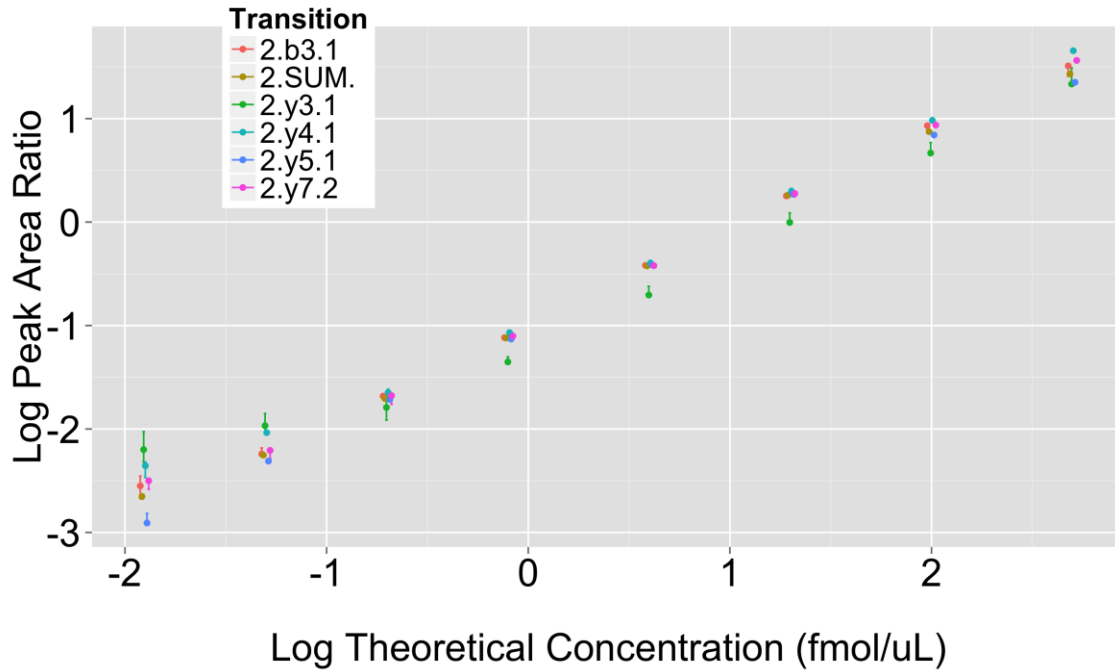
### Analyte: SAIC26C.IEVDLVTHSDPPR



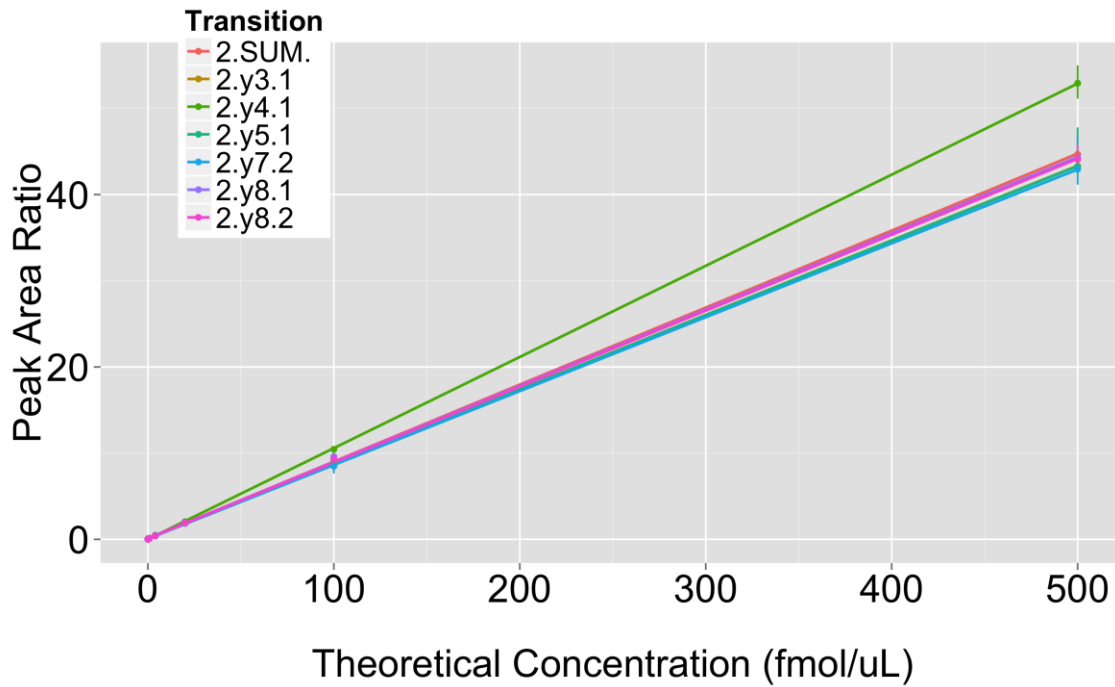
### Analyte: SAIC27C.LVQGSILK



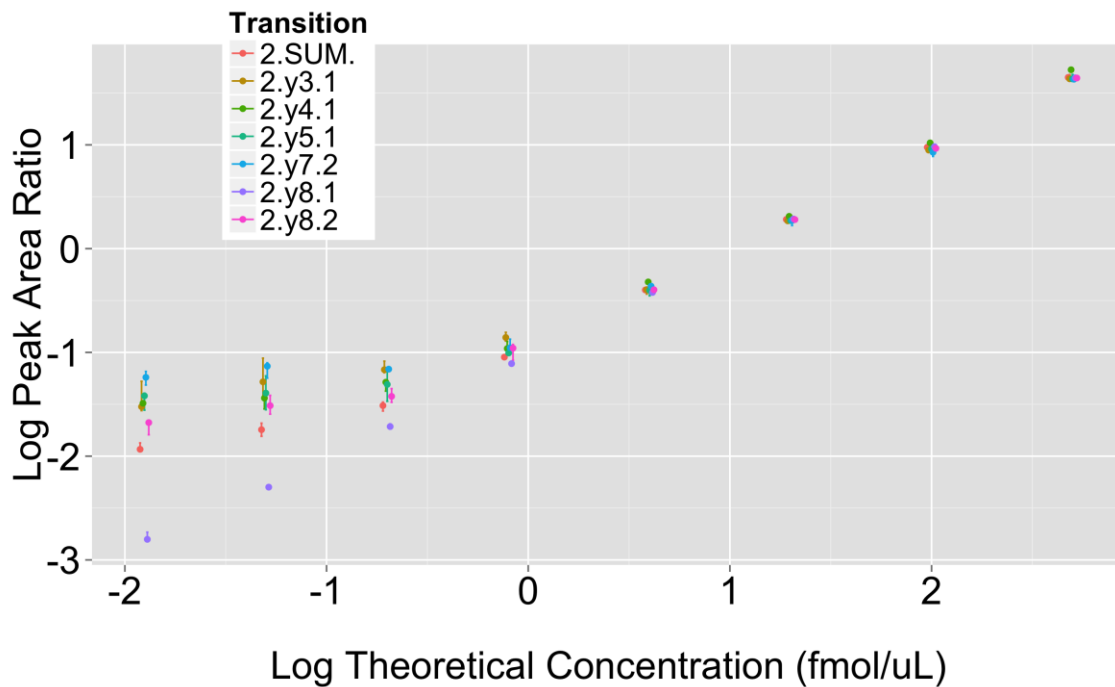
### Analyte: SAIC27C.LVQGSILK



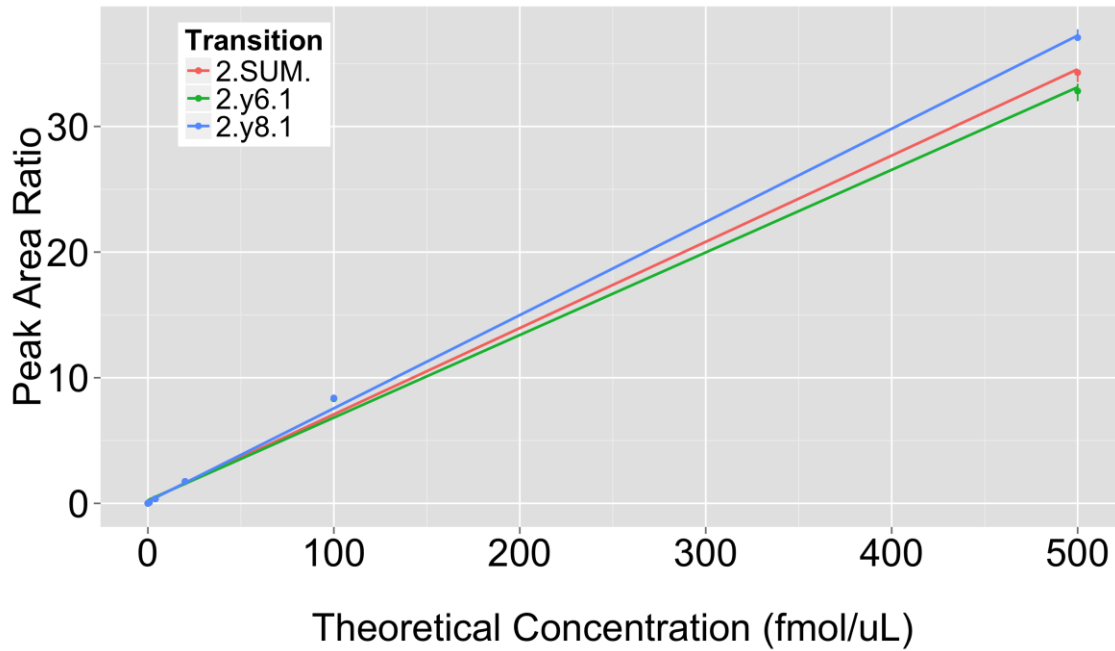
### Analyte: SAIC28A.ILNDDTALK



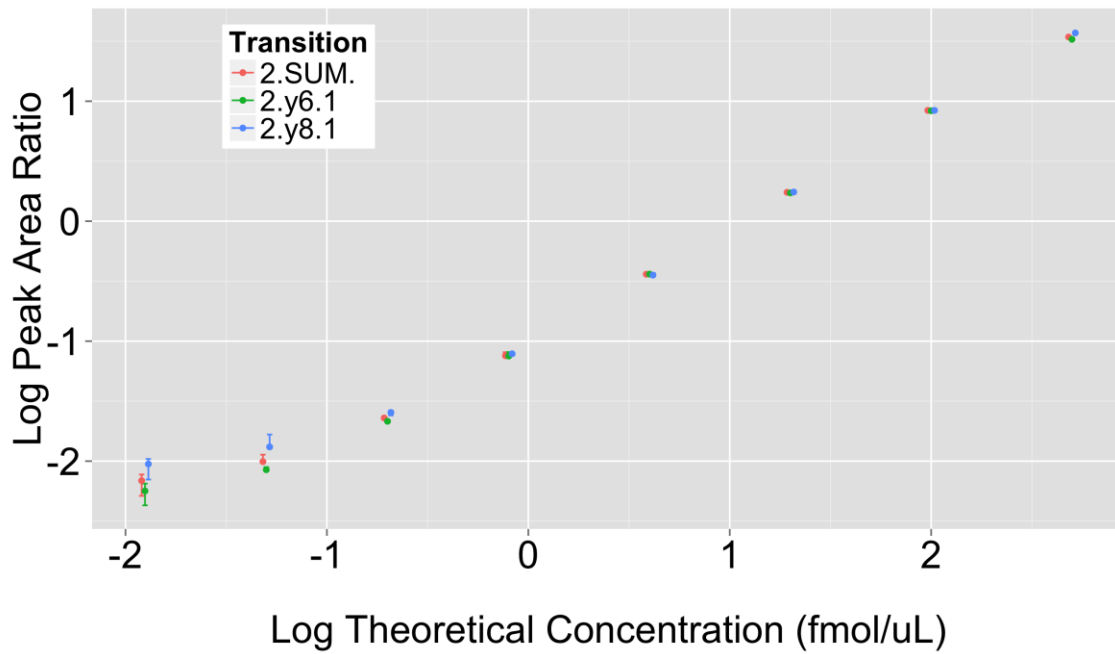
### Analyte: SAIC28A.ILNDDTALK



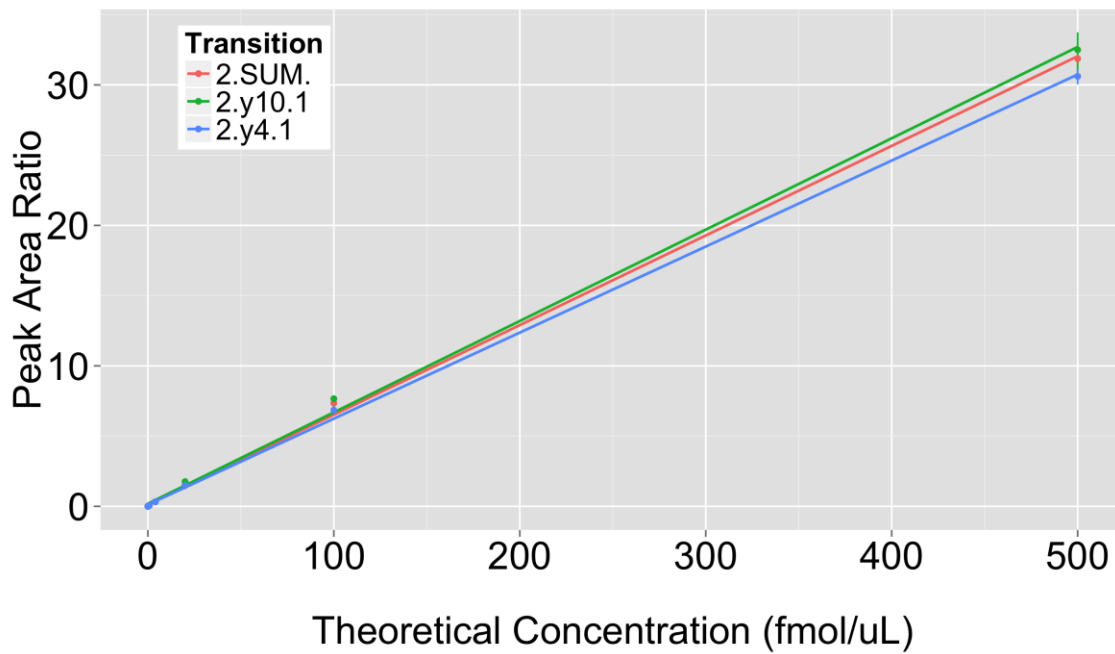
### Analyte: SAIC28B.IDIDPEETVK



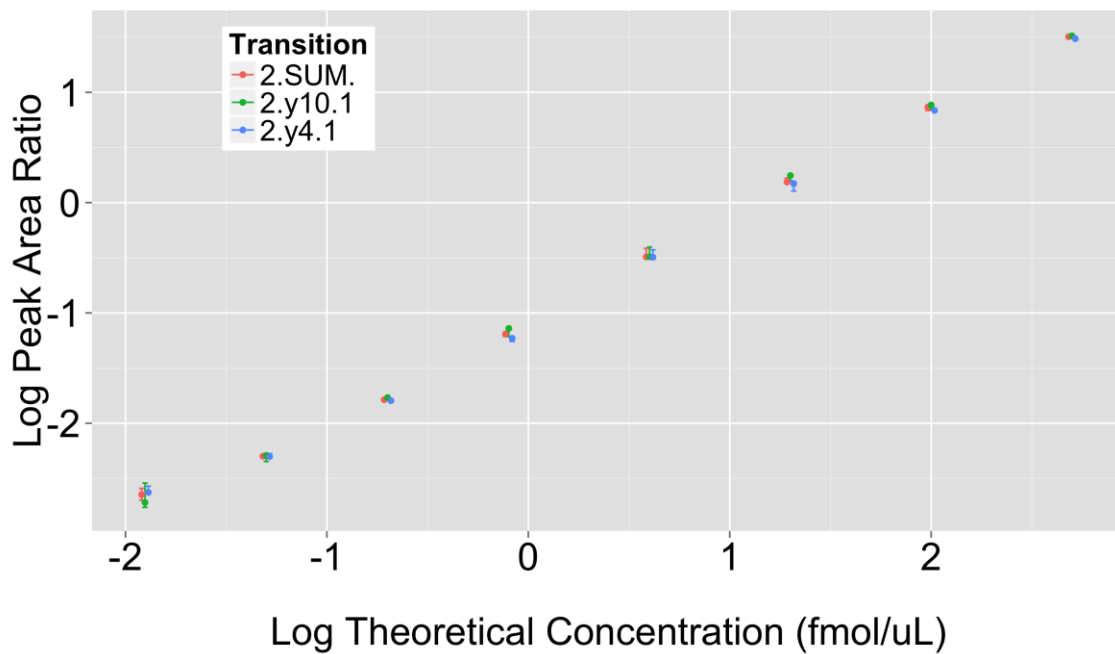
### Analyte: SAIC28B.IDIDPEETVK



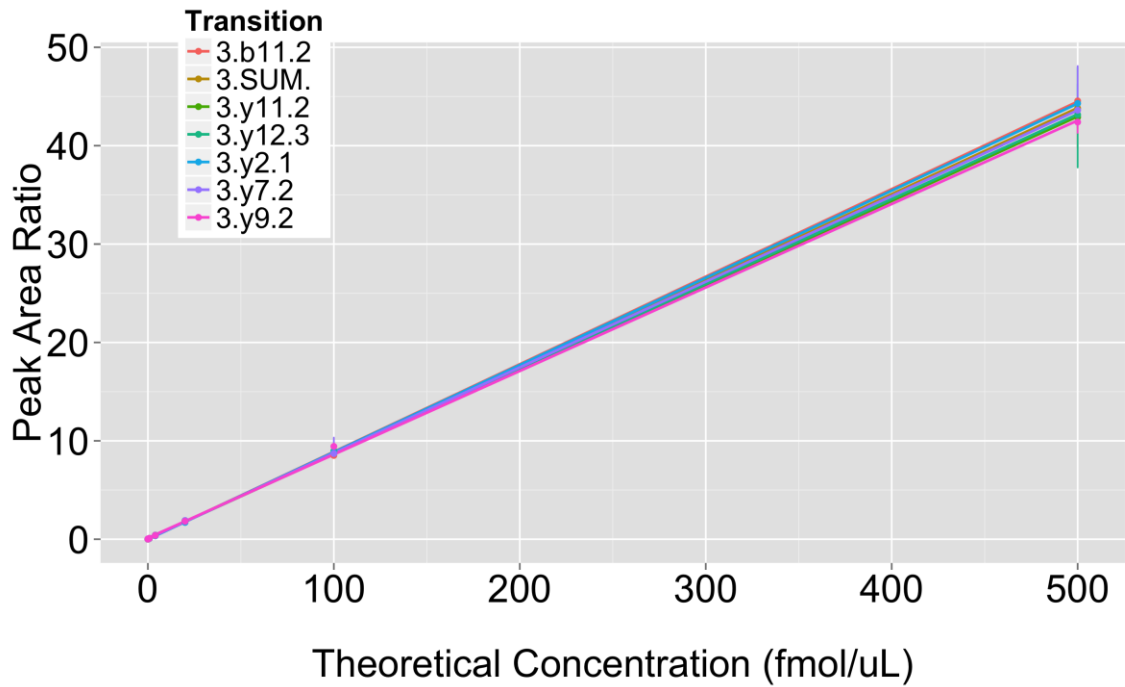
### Analyte: SAIC30C.IEQEFLTEALPVK



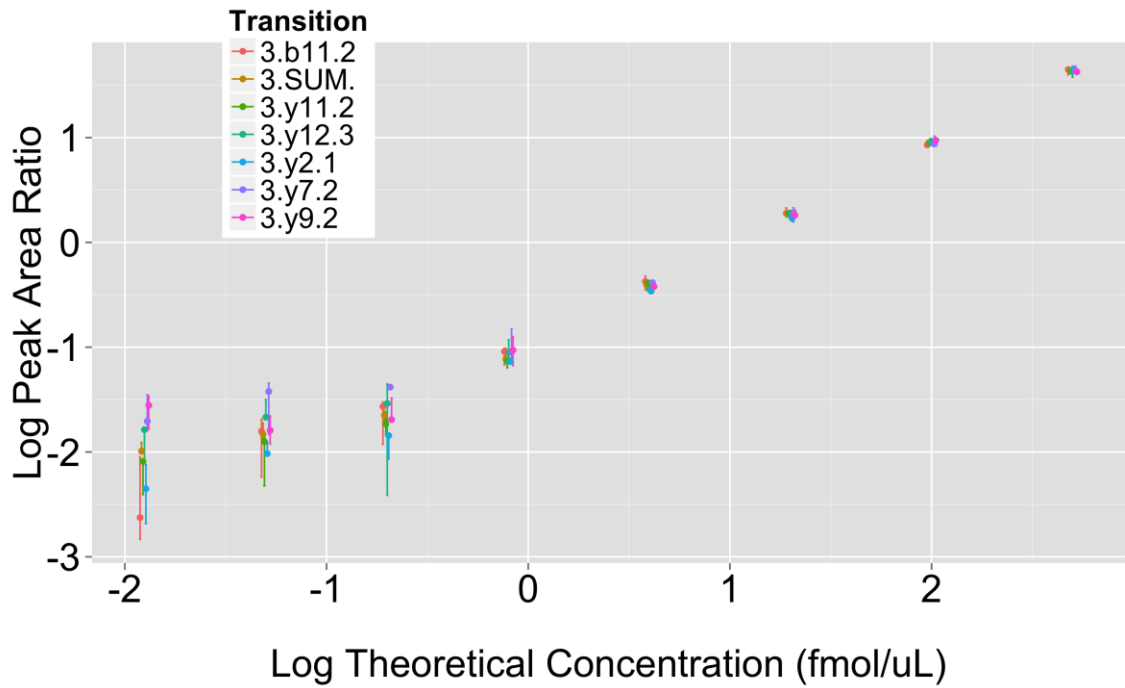
### Analyte: SAIC30C.IEQEFLTEALPVK



### Analyte: SAIC30E.DIQHWESLKPEER

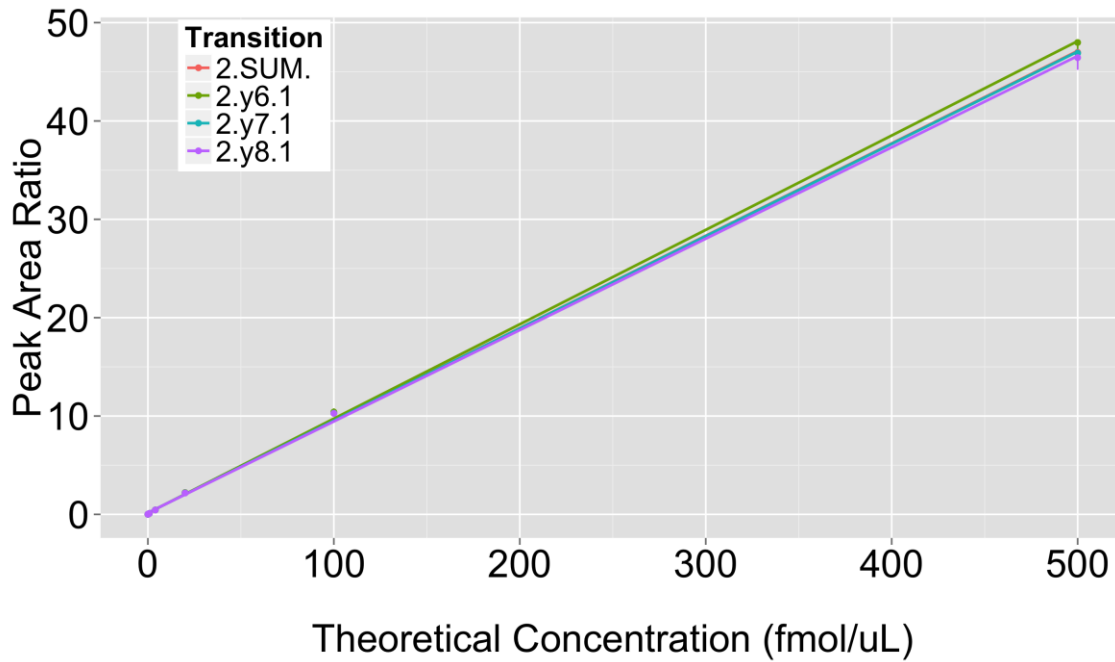


### Analyte: SAIC30E.DIQHWESLKPEER

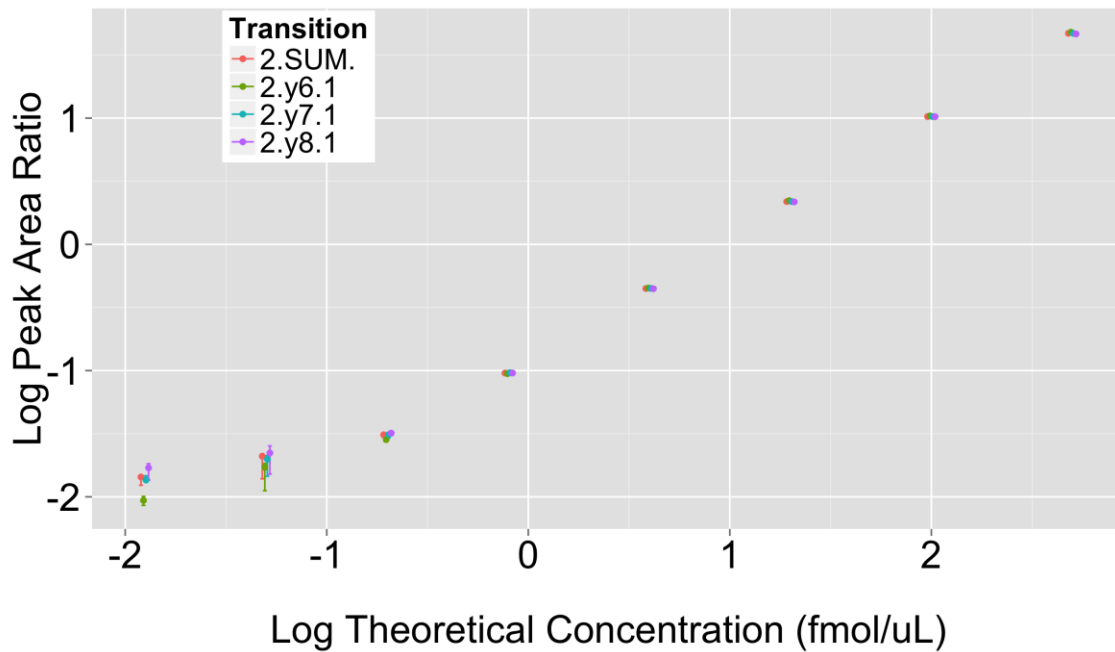




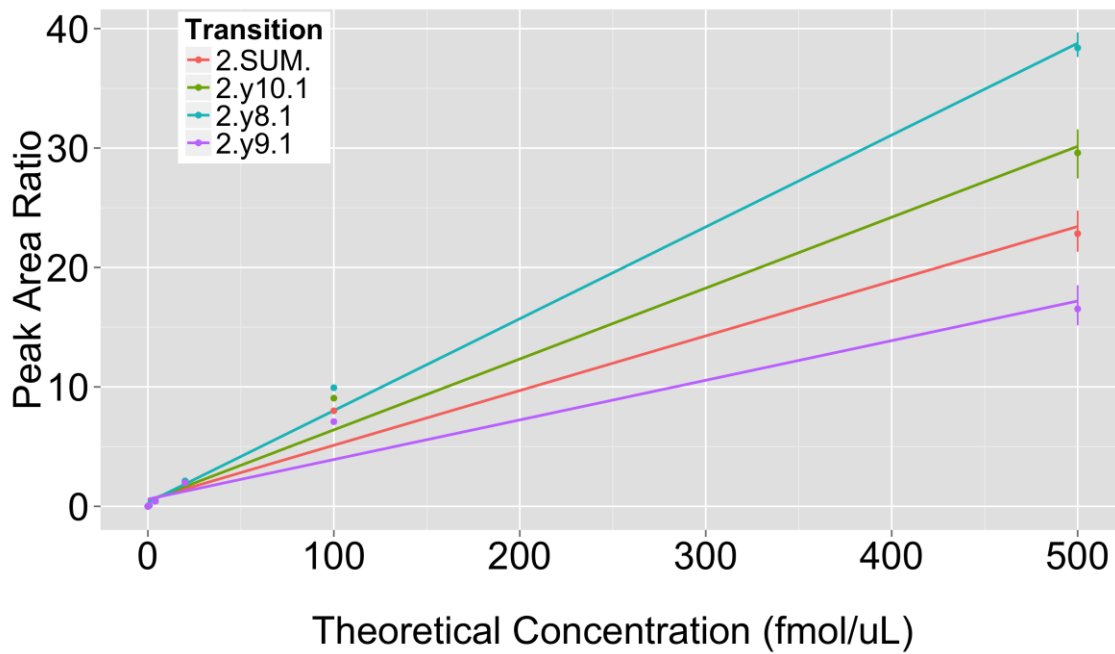
### Analyte: SAIC31A.TVEEAENIAVTSGVVR



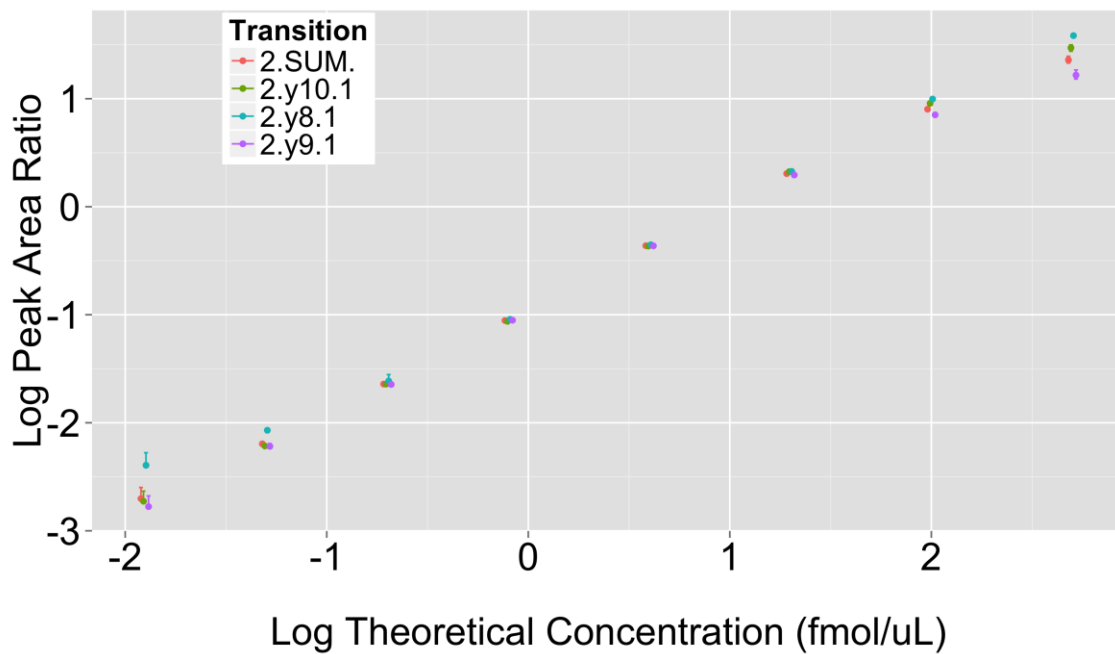
### Analyte: SAIC31A.TVEEAENIAVTSGVVR



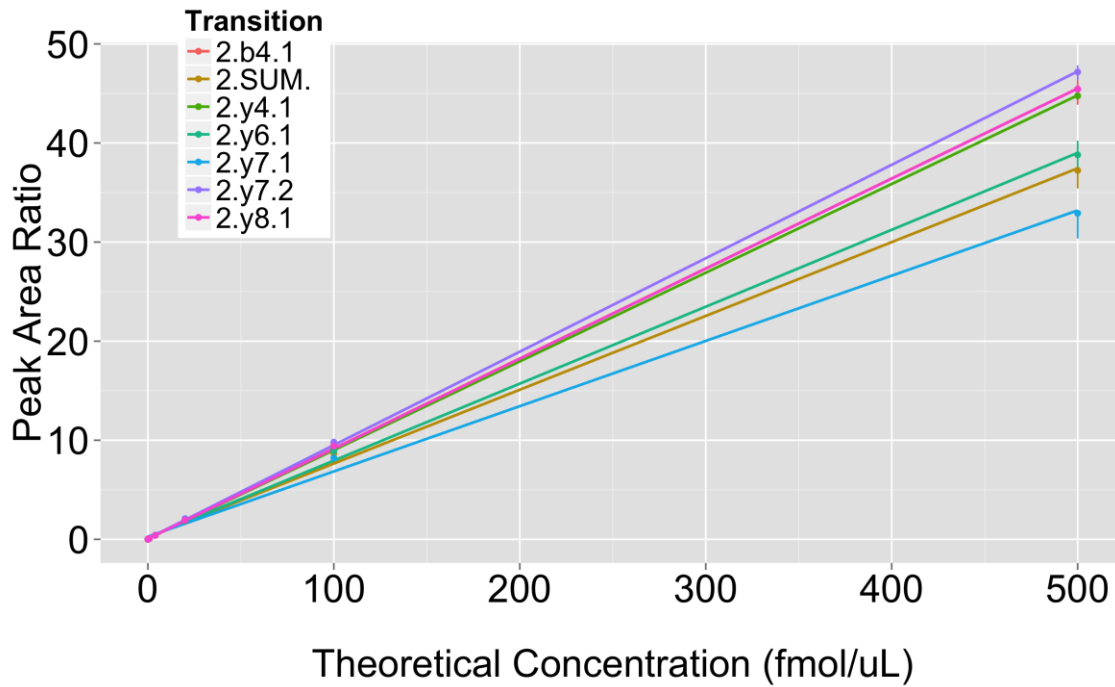
### Analyte: SAIC32C.YLAPSGPSGTLK



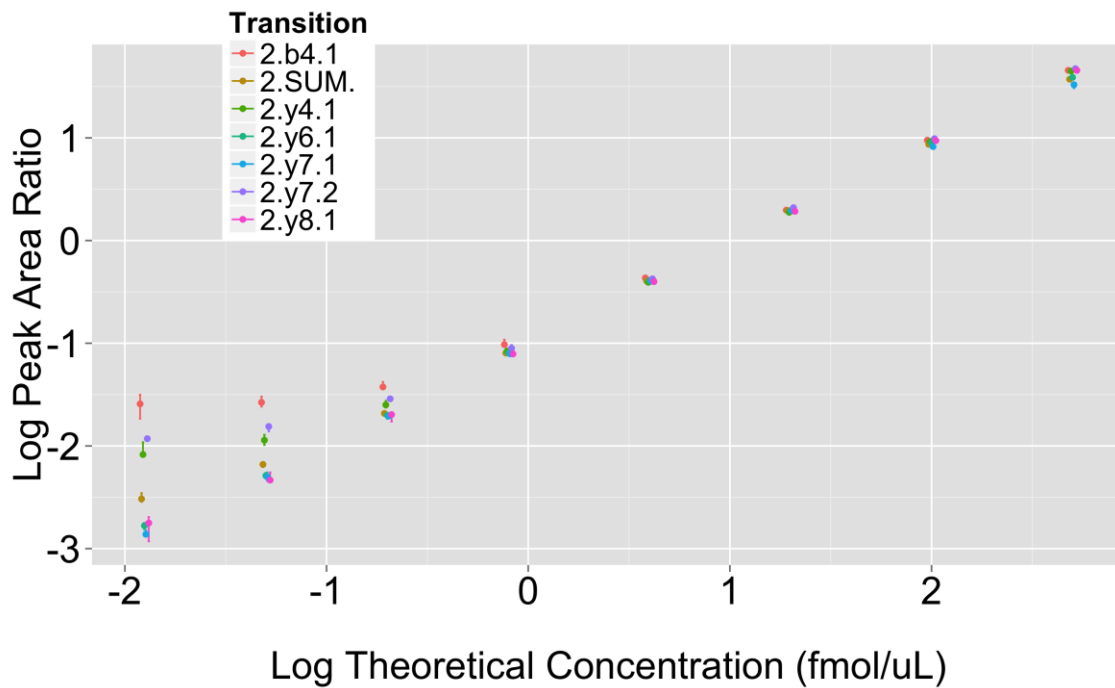
### Analyte: SAIC32C.YLAPSGPSGTLK



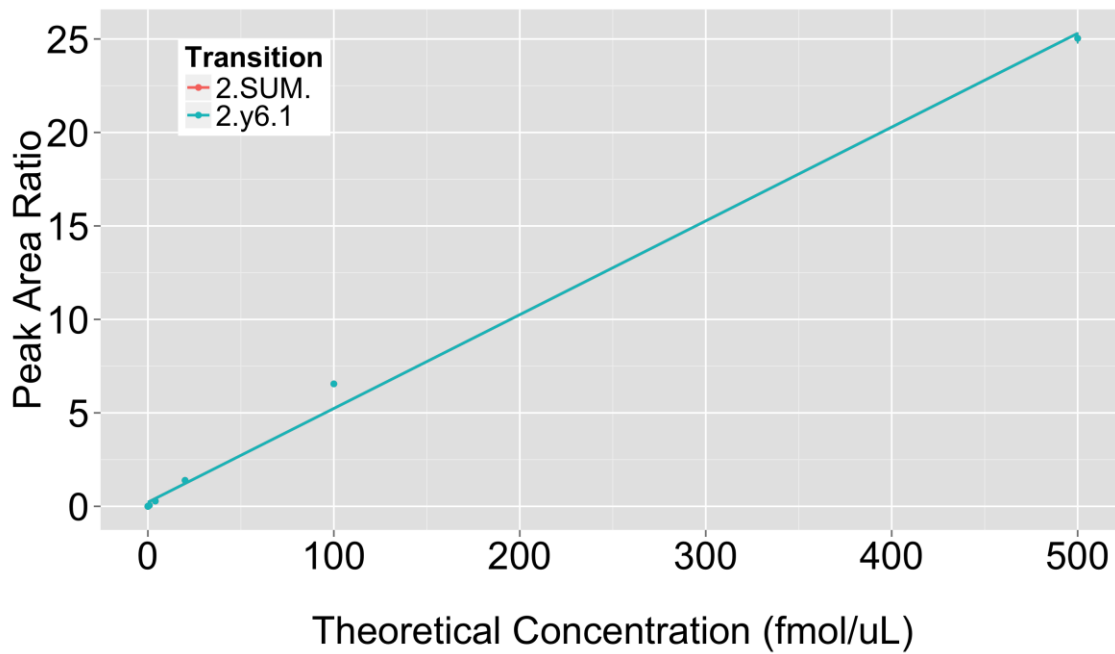
### Analyte: SAIC33B.AAEDYGVIK



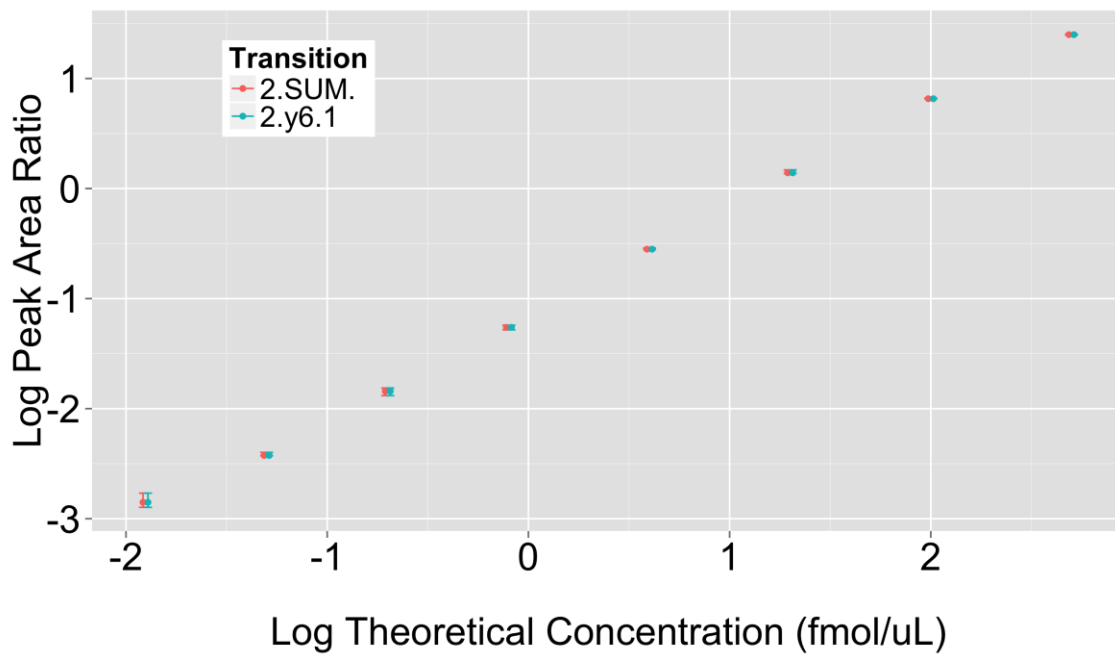
### Analyte: SAIC33B.AAEDYGVIK



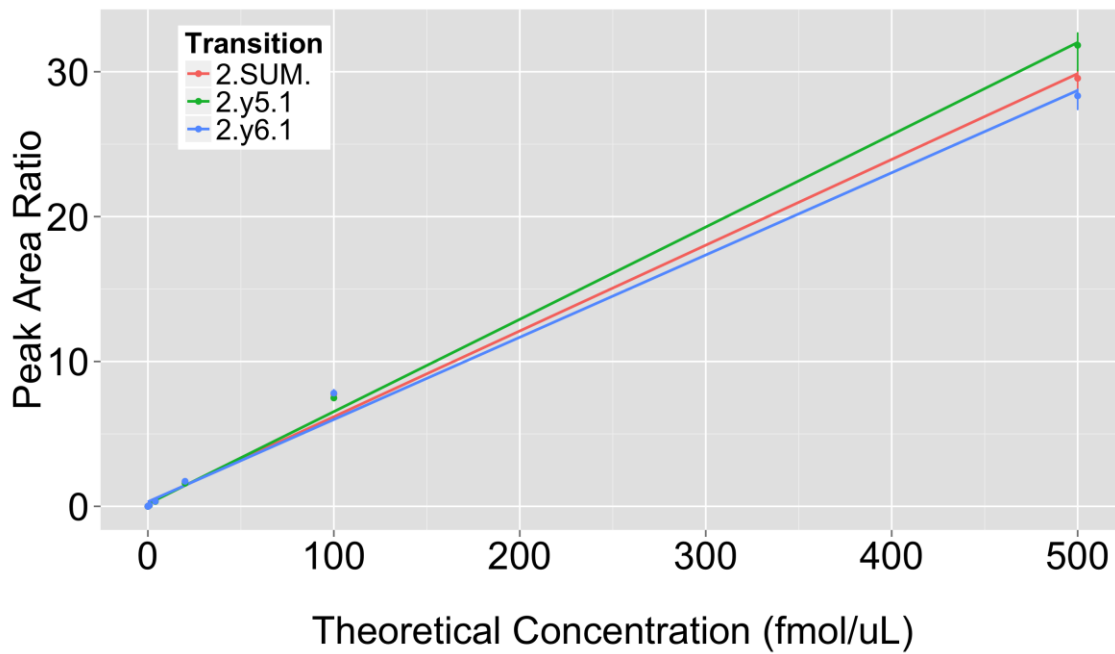
### Analyte: SAIC34B.LSEDYGVLK



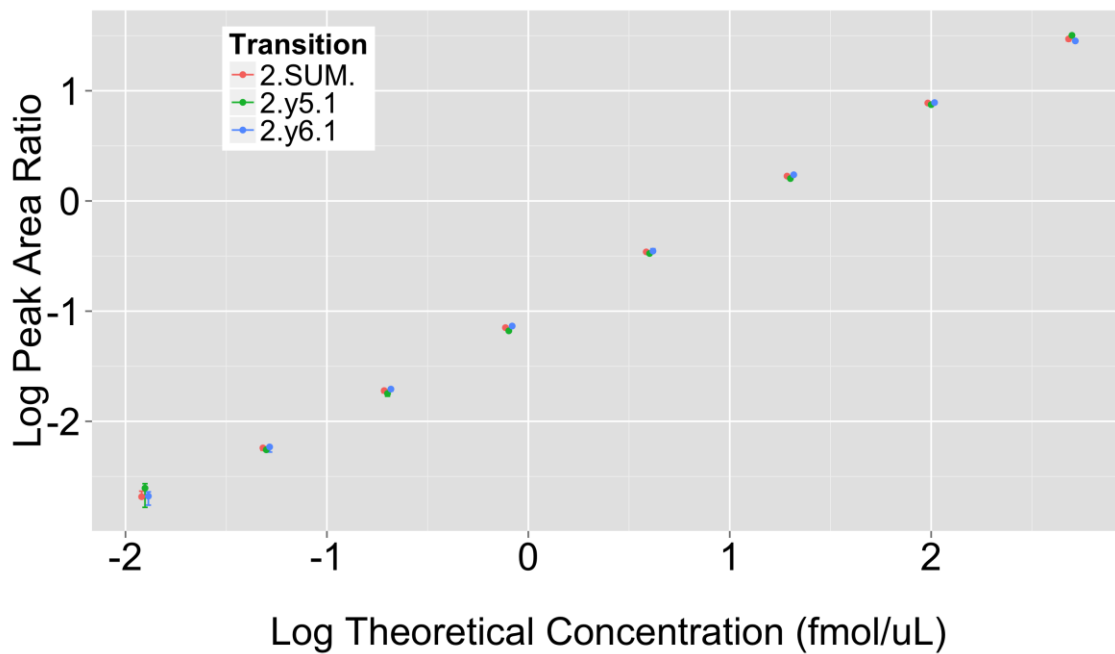
### Analyte: SAIC34B.LSEDYGVLK



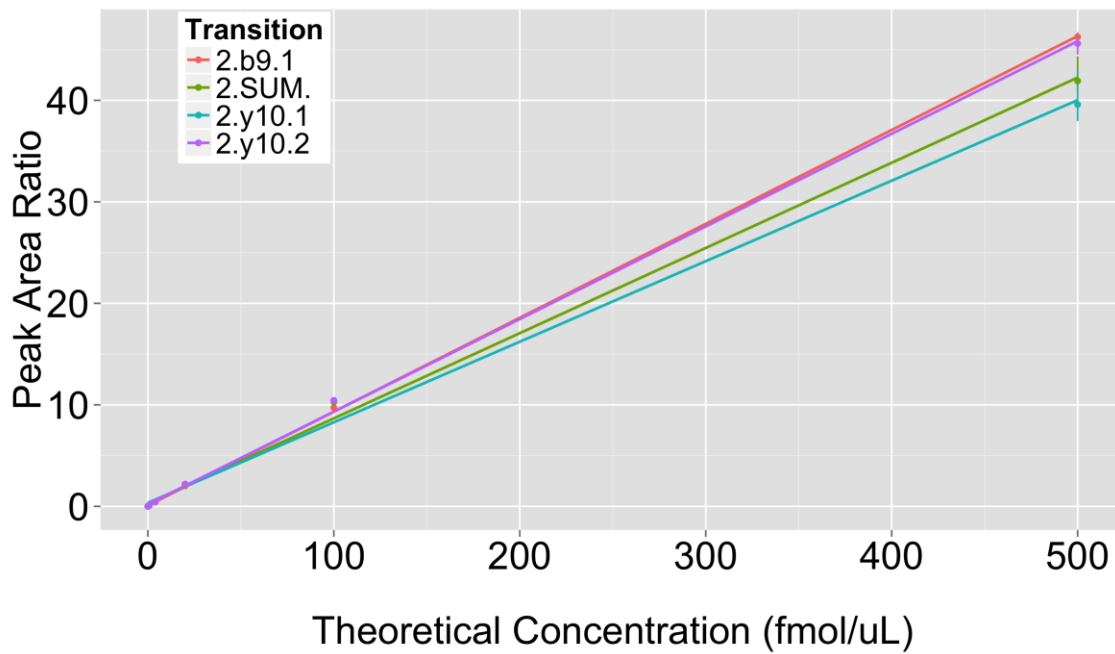
### Analyte: SAIC34D.GLFIIDGK



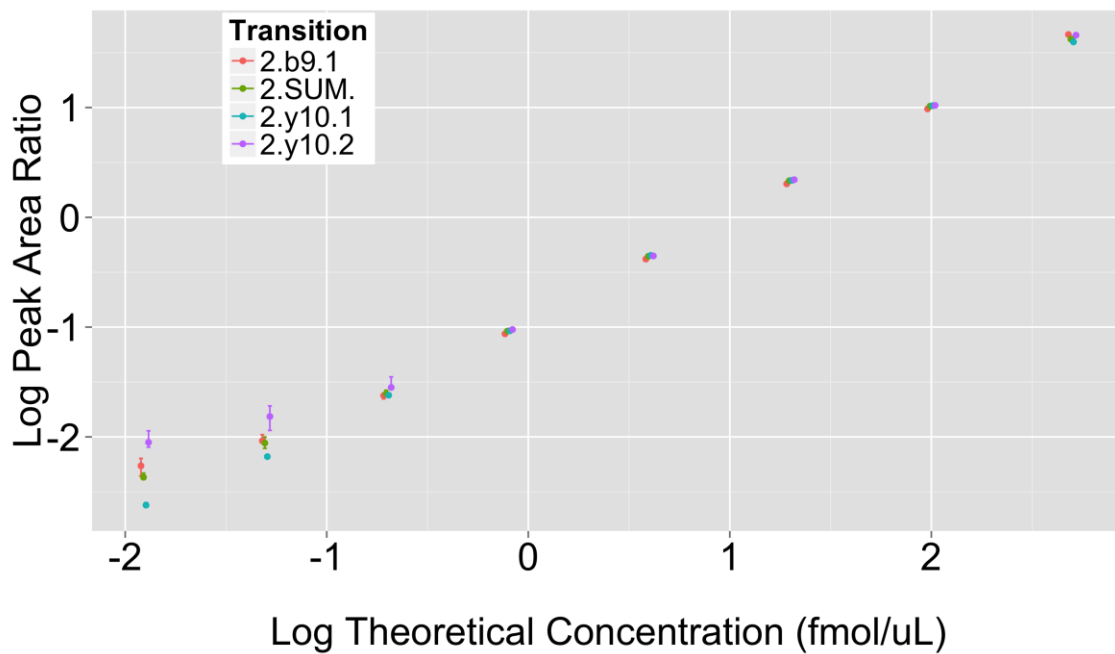
### Analyte: SAIC34D.GLFIIDGK



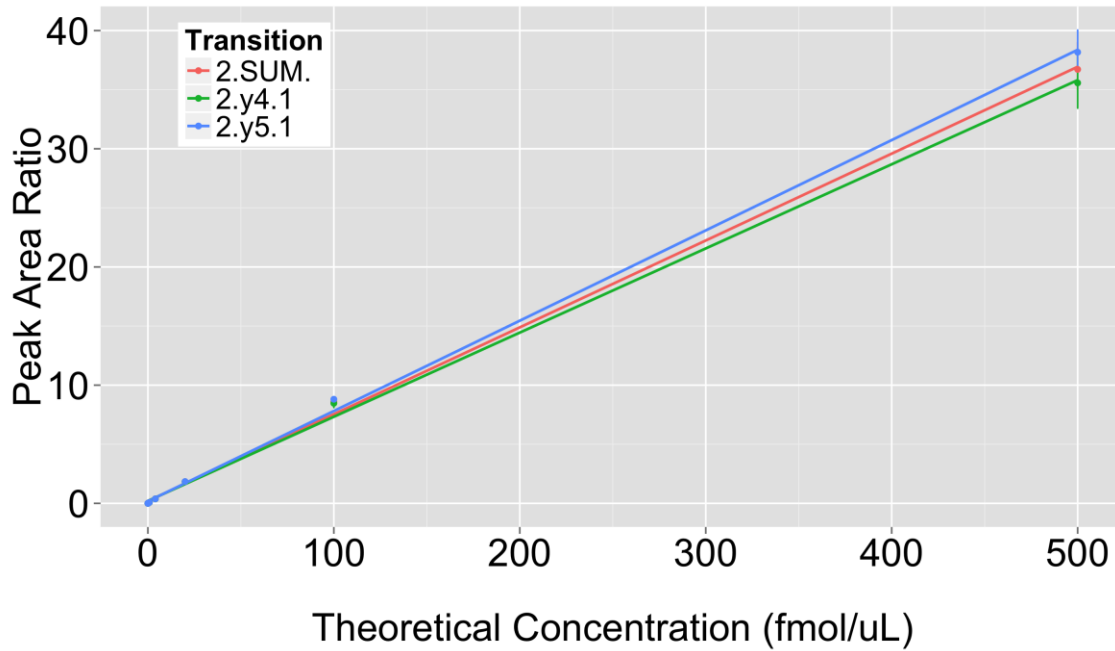
### Analyte: SAIC36A.DHPFGFVAVPTK



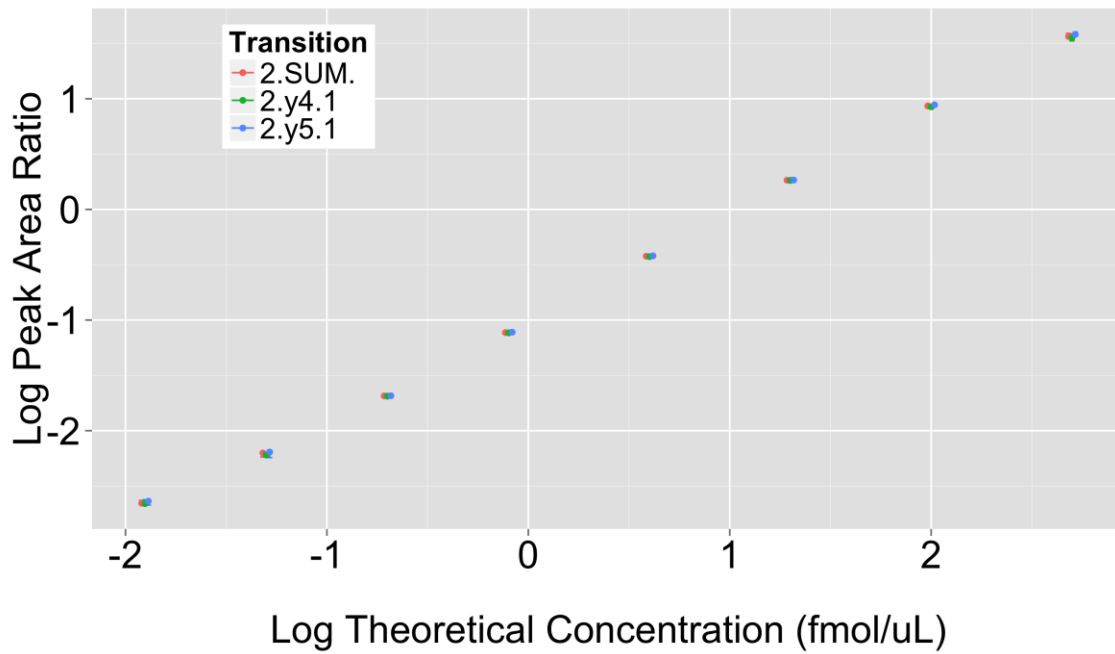
### Analyte: SAIC36A.DHPFGFVAVPTK



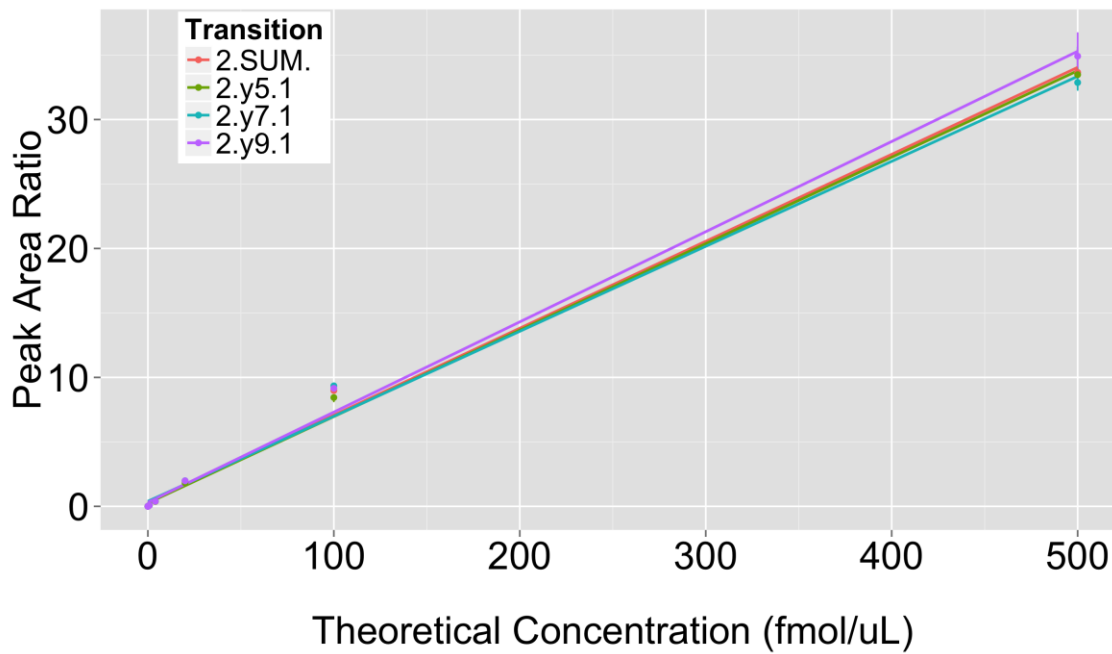
### Analyte: SAIC37C.SGYLSSER



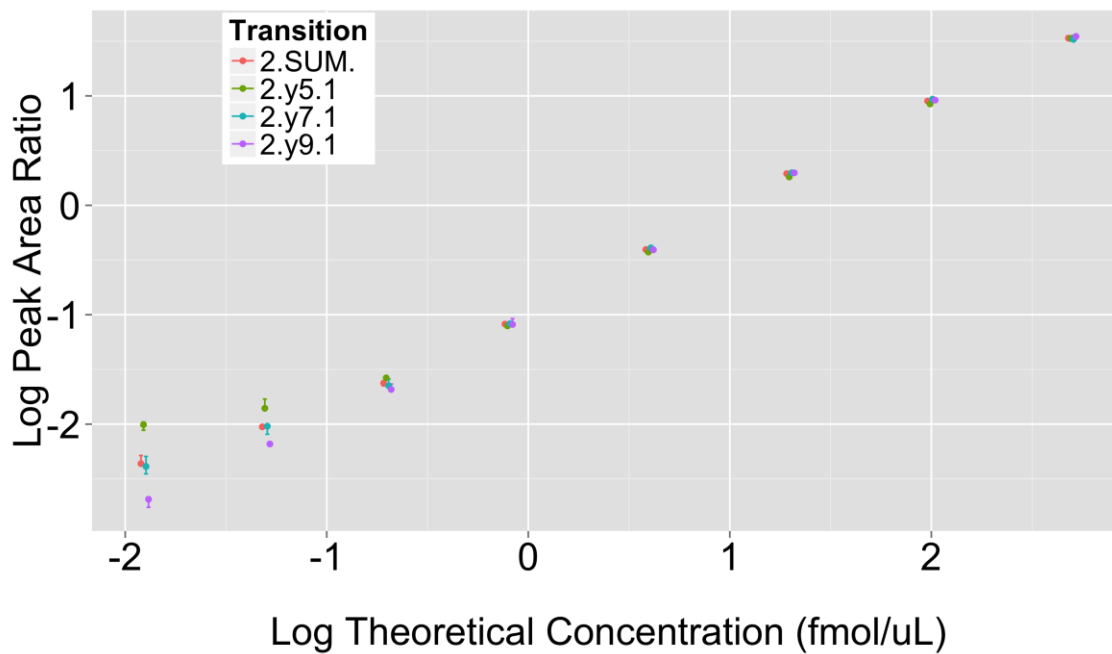
### Analyte: SAIC37C.SGYLSSER



### Analyte: SAIC40A.QITLNDLPVGR

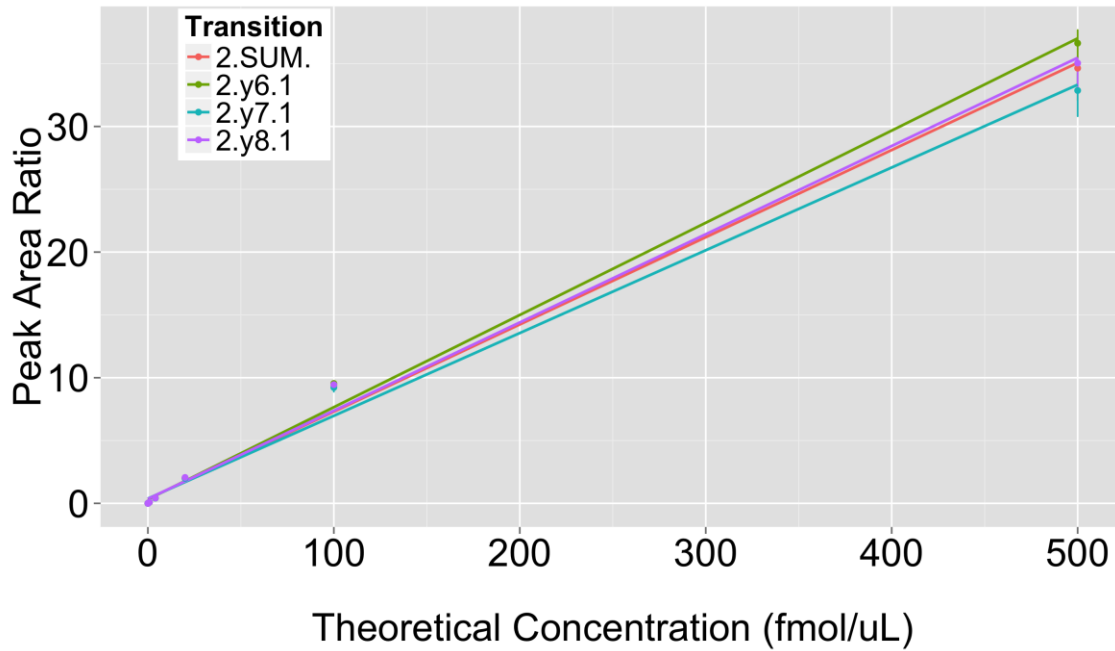


### Analyte: SAIC40A.QITLNDLPVGR

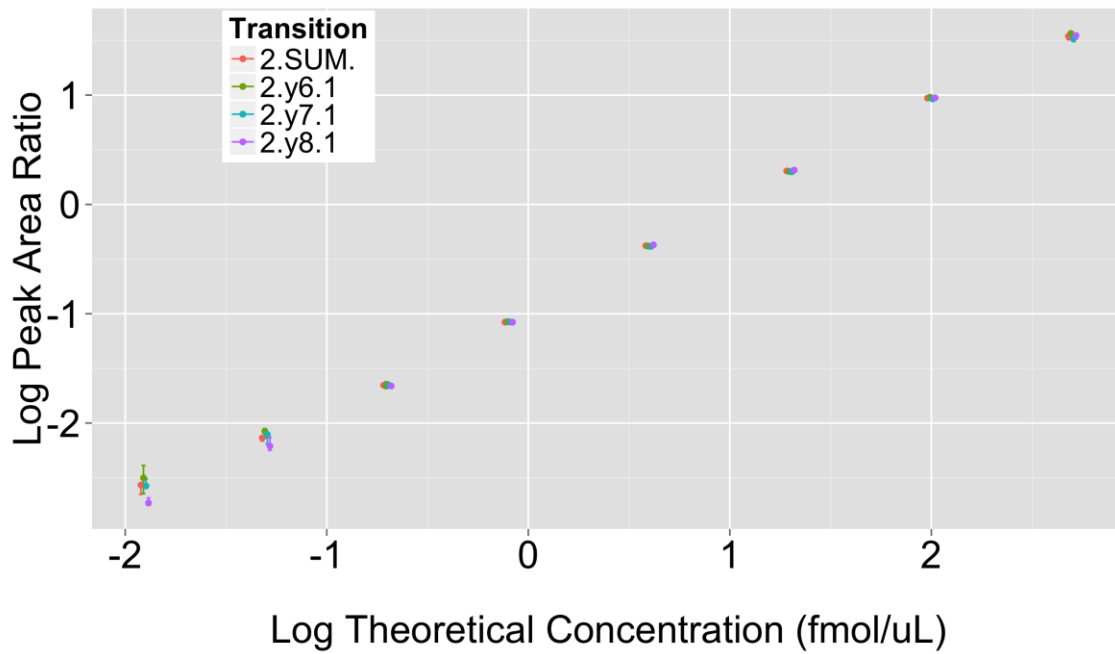




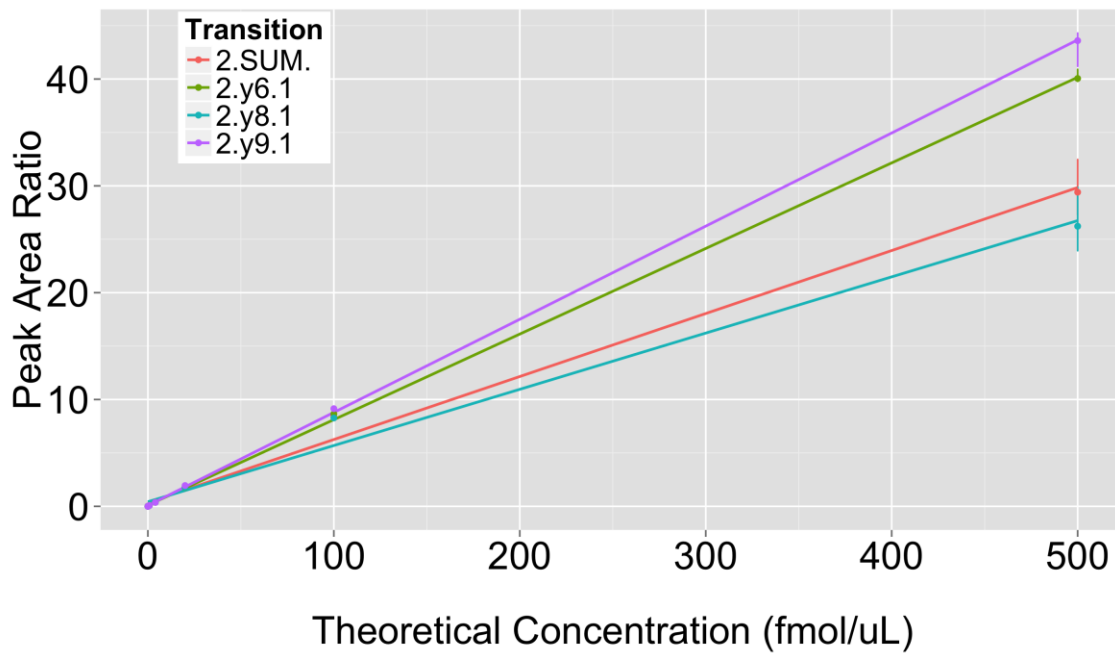
### Analyte: SAIC40C.LVQAFQYTDK



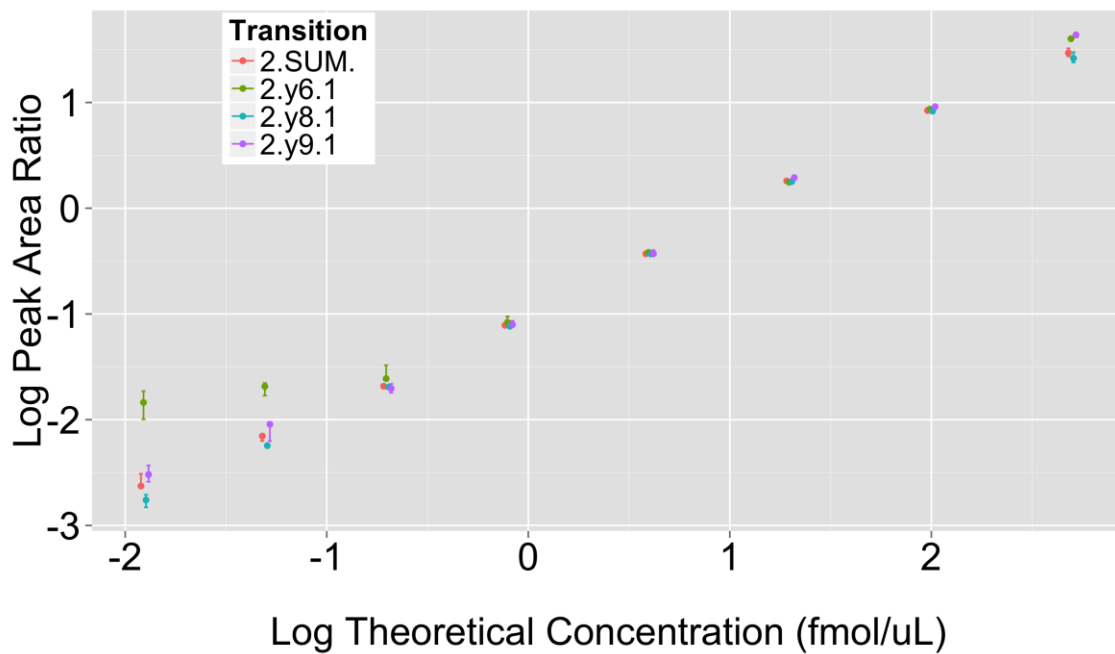
### Analyte: SAIC40C.LVQAFQYTDK



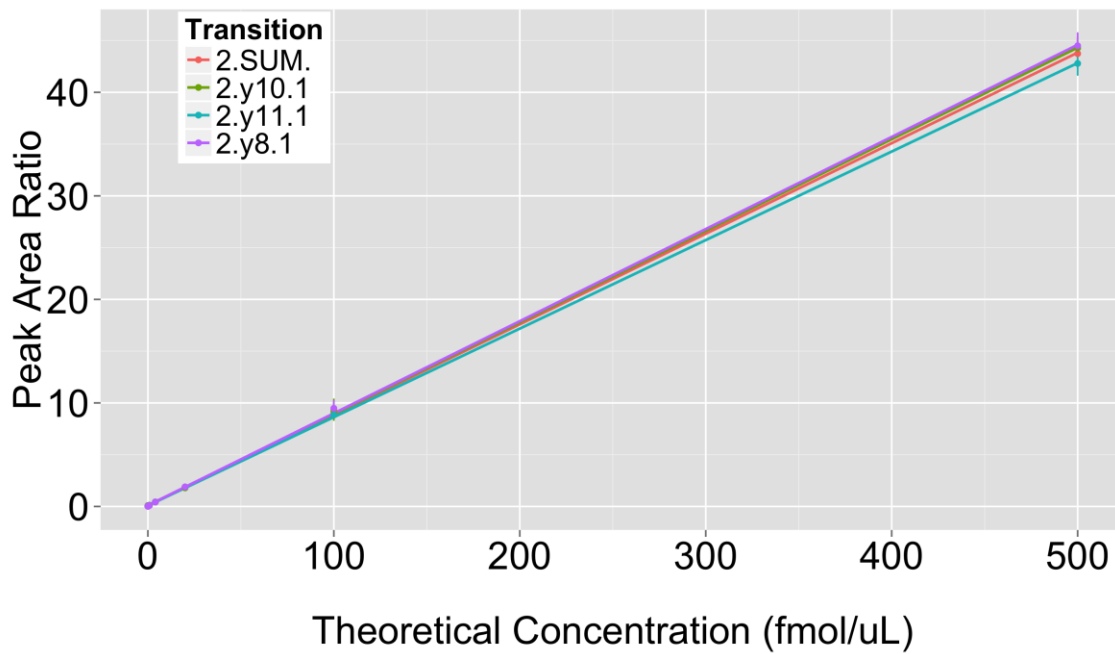
### Analyte: SAIC41A.GISAFPESDNLFK



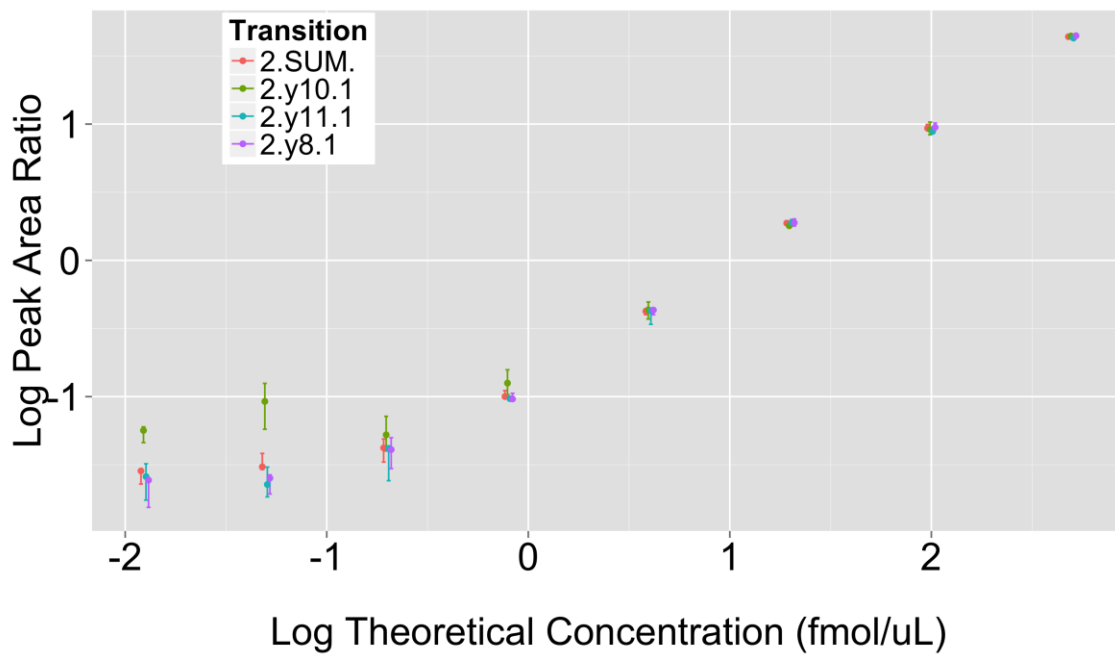
### Analyte: SAIC41A.GISAFPESDNLFK



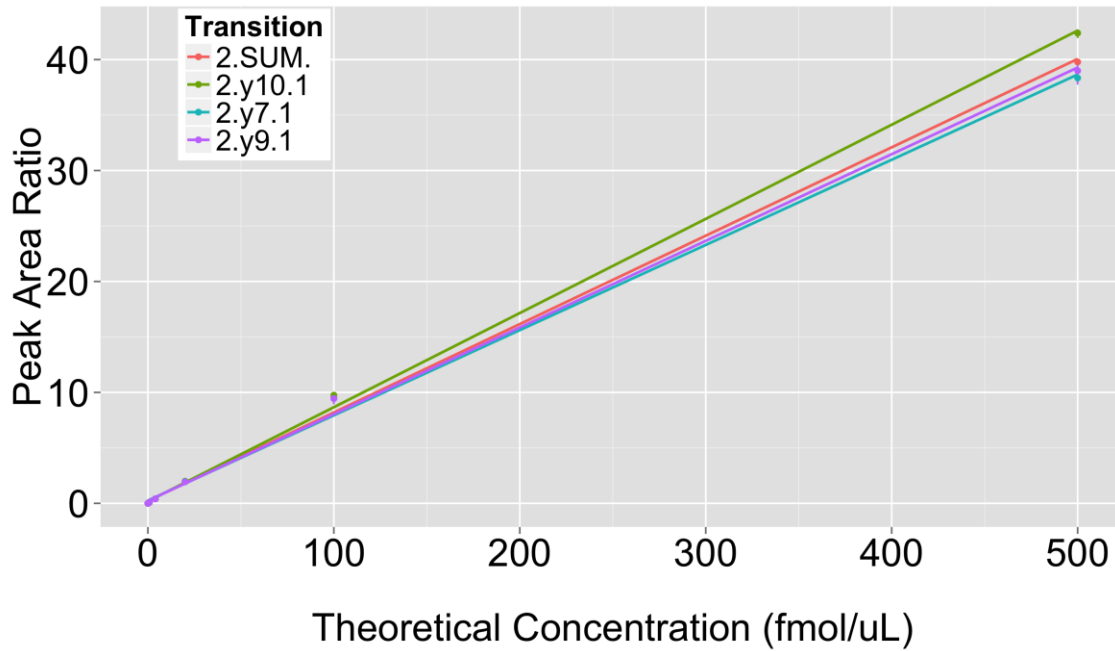
### Analyte: SAIC41C.LSLEFPSGYPNAPTVK



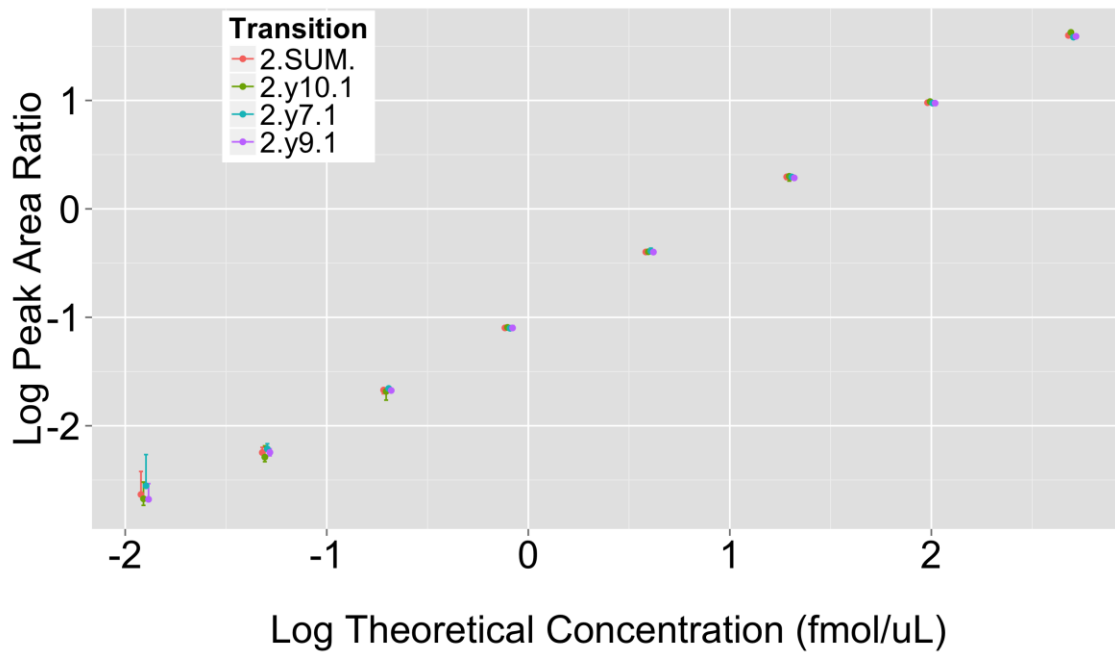
### Analyte: SAIC41C.LSLEFPSGYPNAPTVK



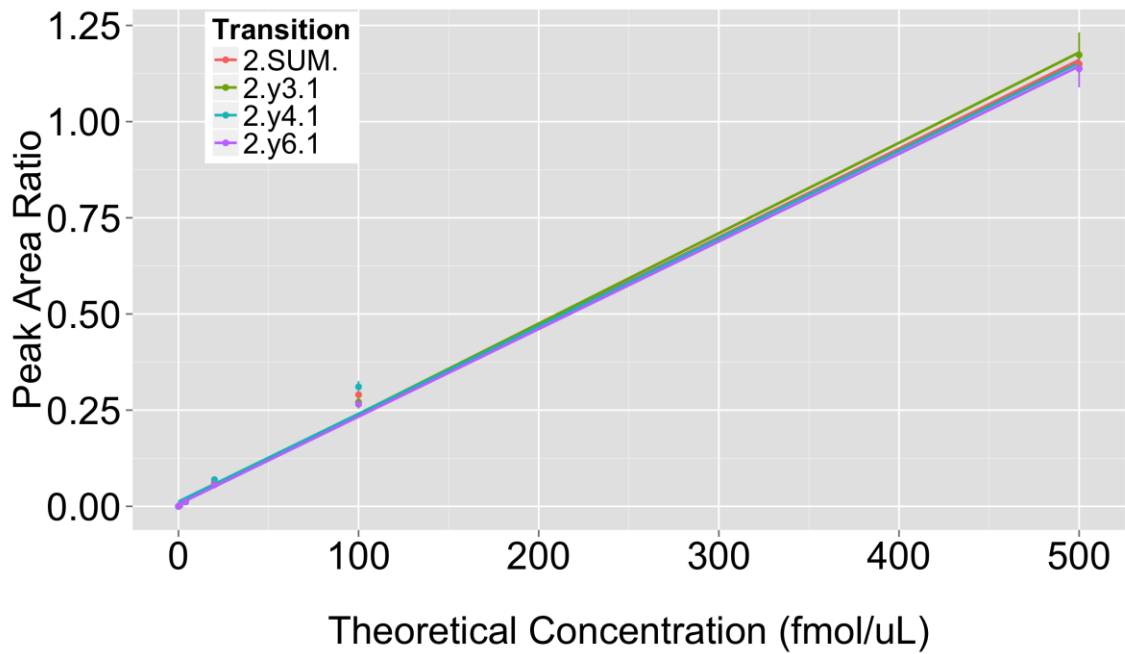
### Analyte: SAIC42B.AQLLQGLGFNLTER



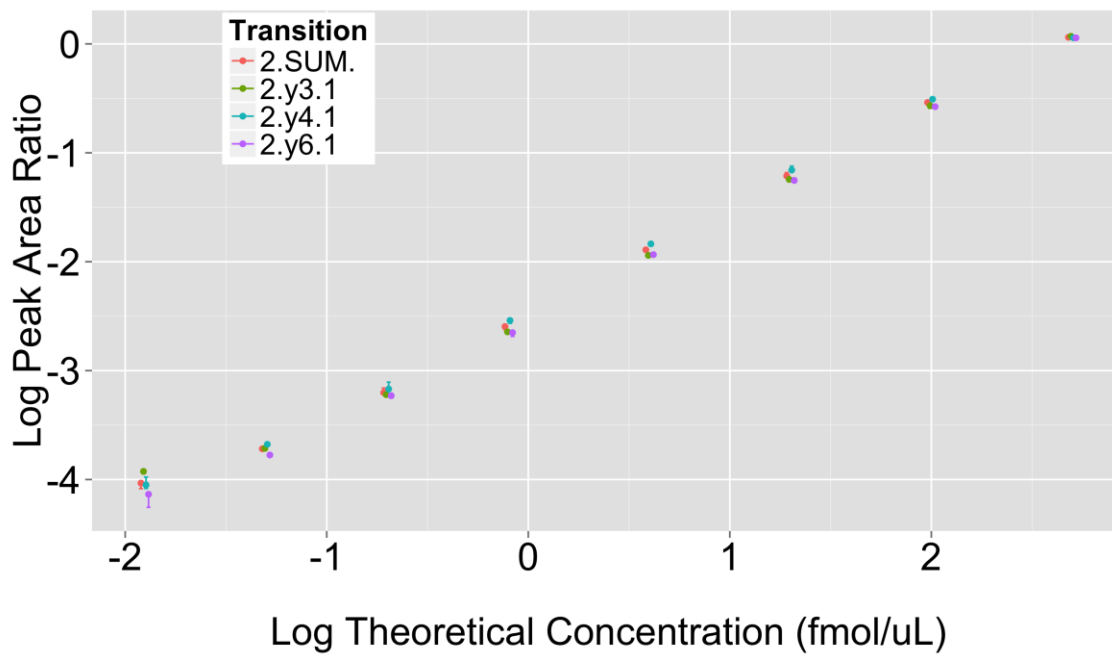
### Analyte: SAIC42B.AQLLQGLGFNLTER

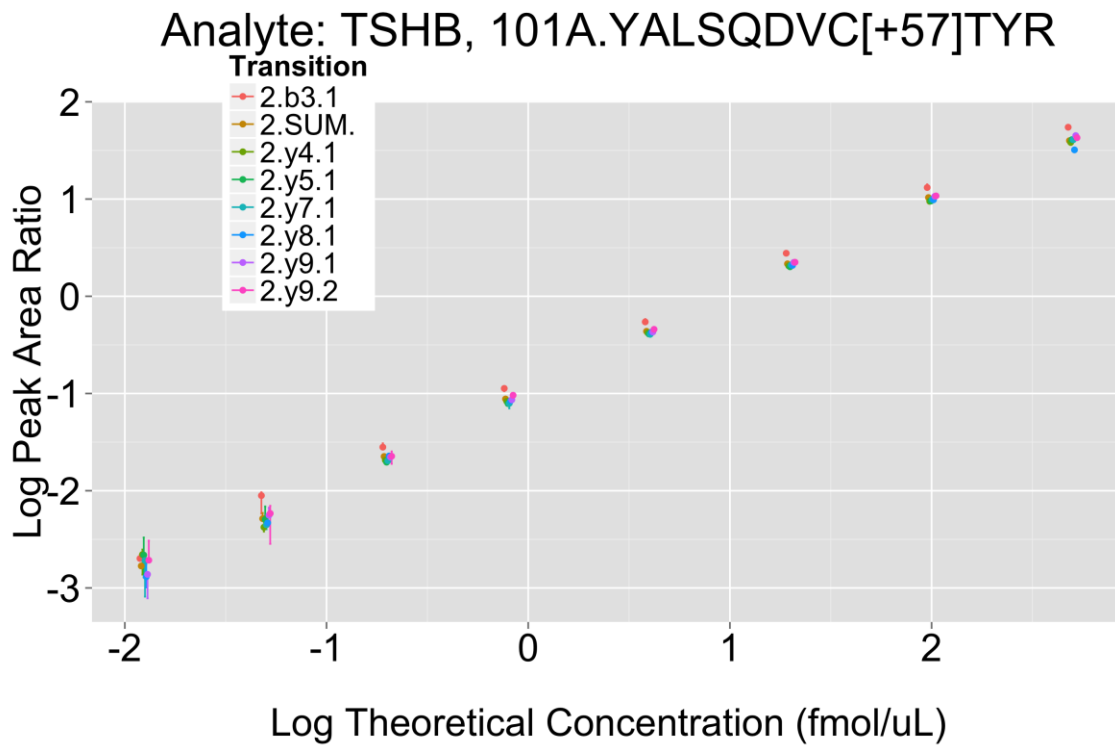
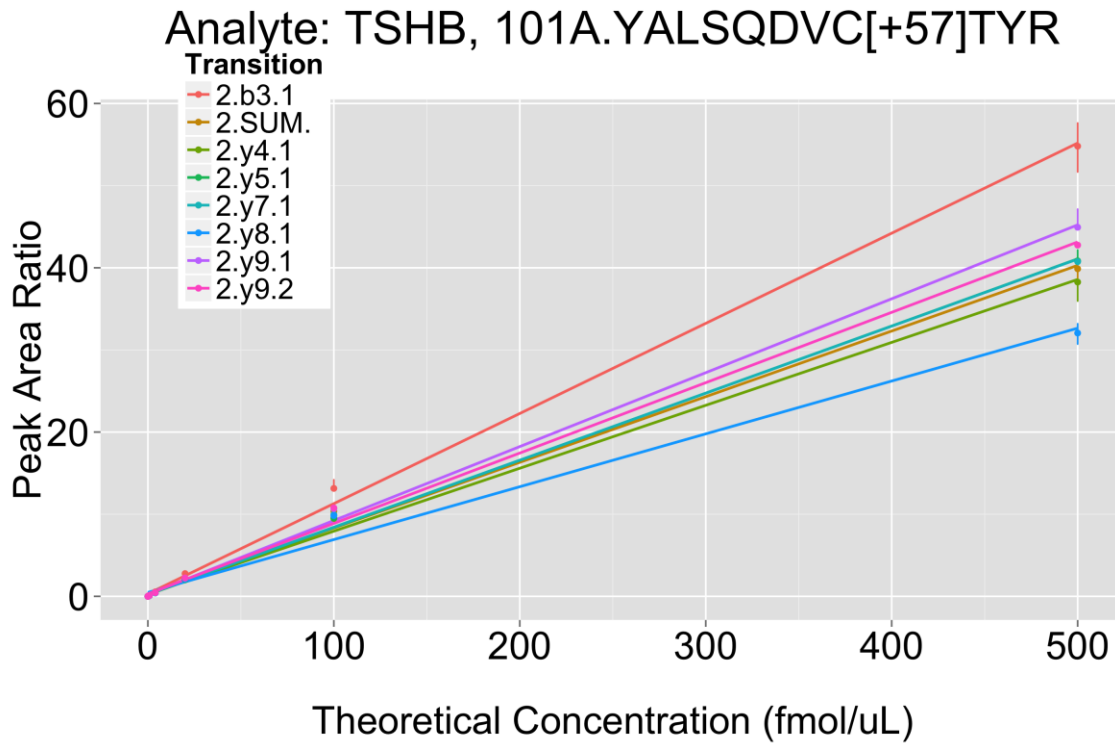


### Analyte: SAIC43B.ASSIIDELFQDR

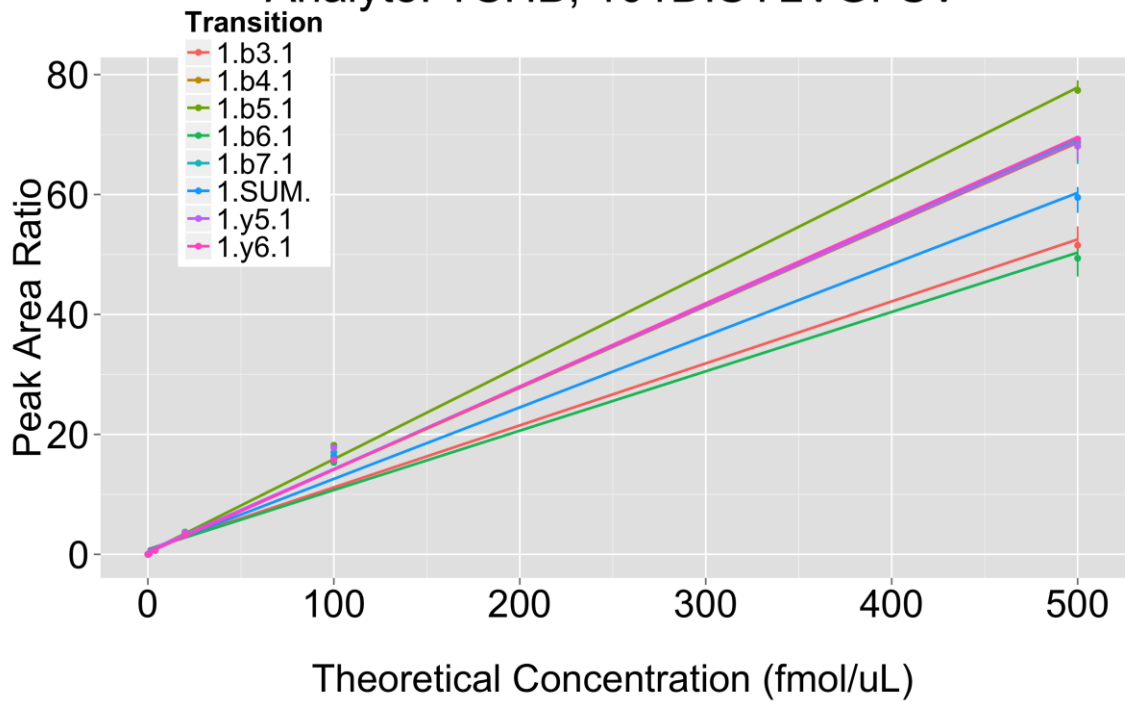


### Analyte: SAIC43B.ASSIIDELFQDR

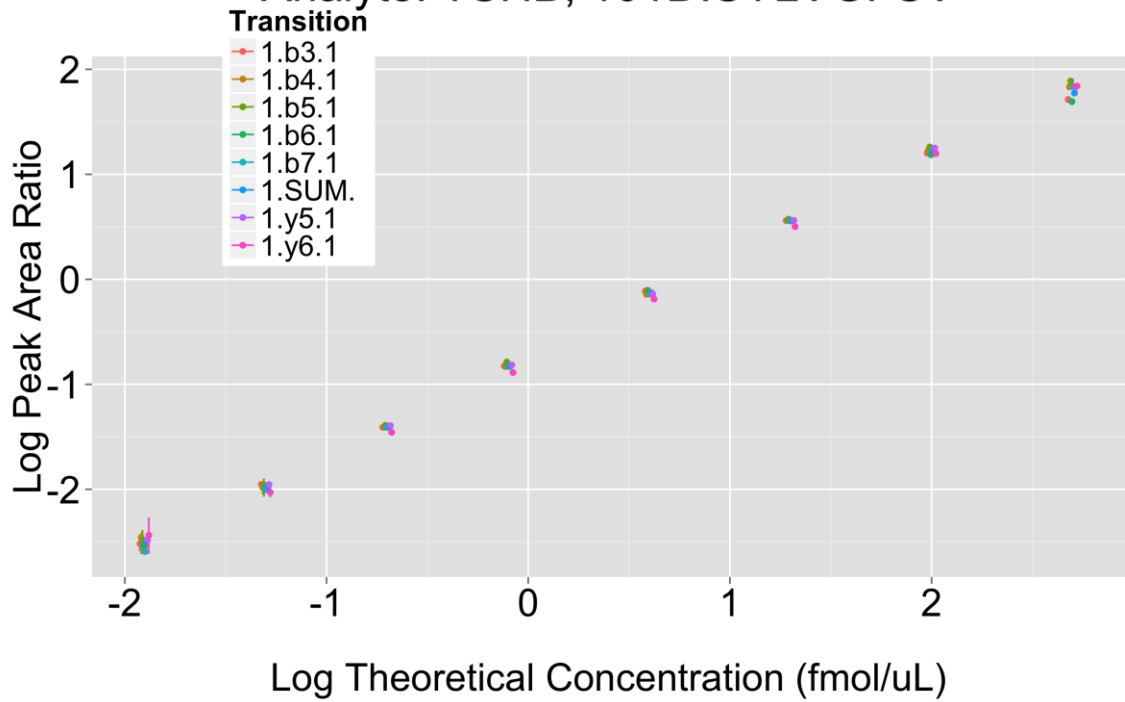




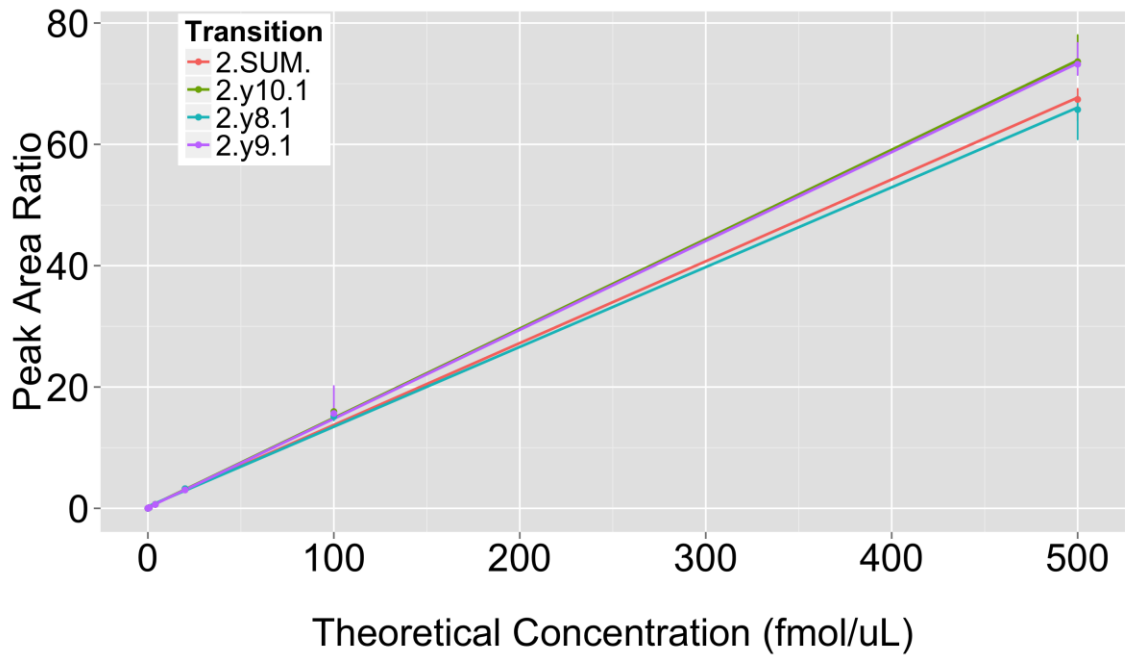
### Analyte: TSHB, 101D.SYLVGFSV



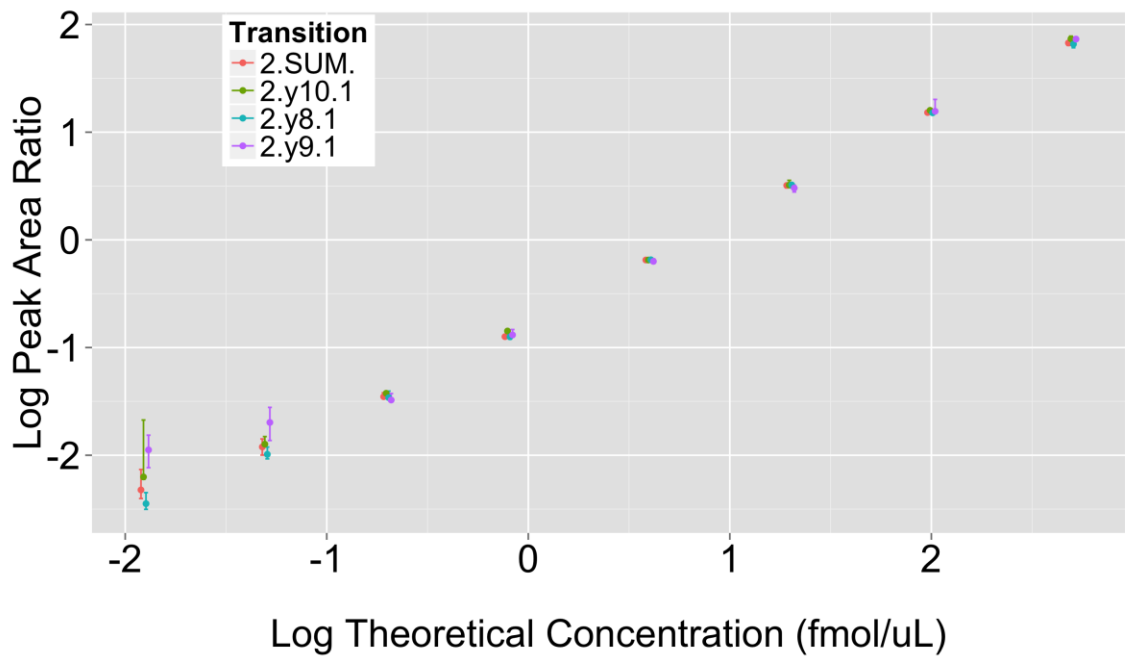
### Analyte: TSHB, 101D.SYLVGFSV



Analyte: CGB\*, 102A.VLQGVLPALPQVVC[+57]NYR

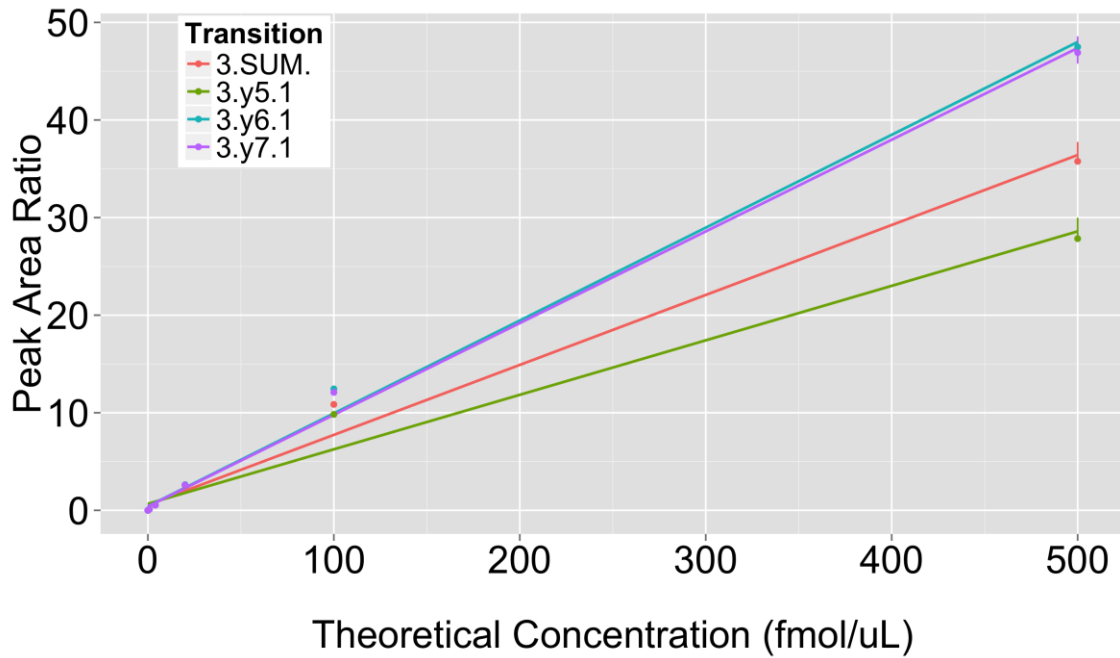


Analyte: CGB\*, 102A.VLQGVLPALPQVVC[+57]NYR

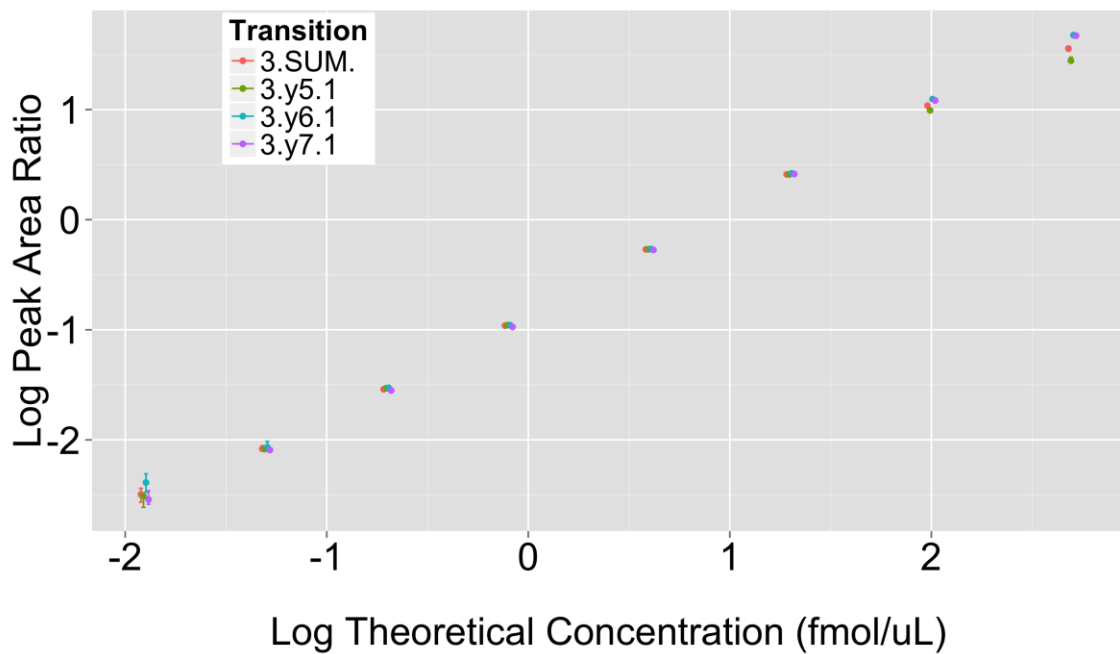




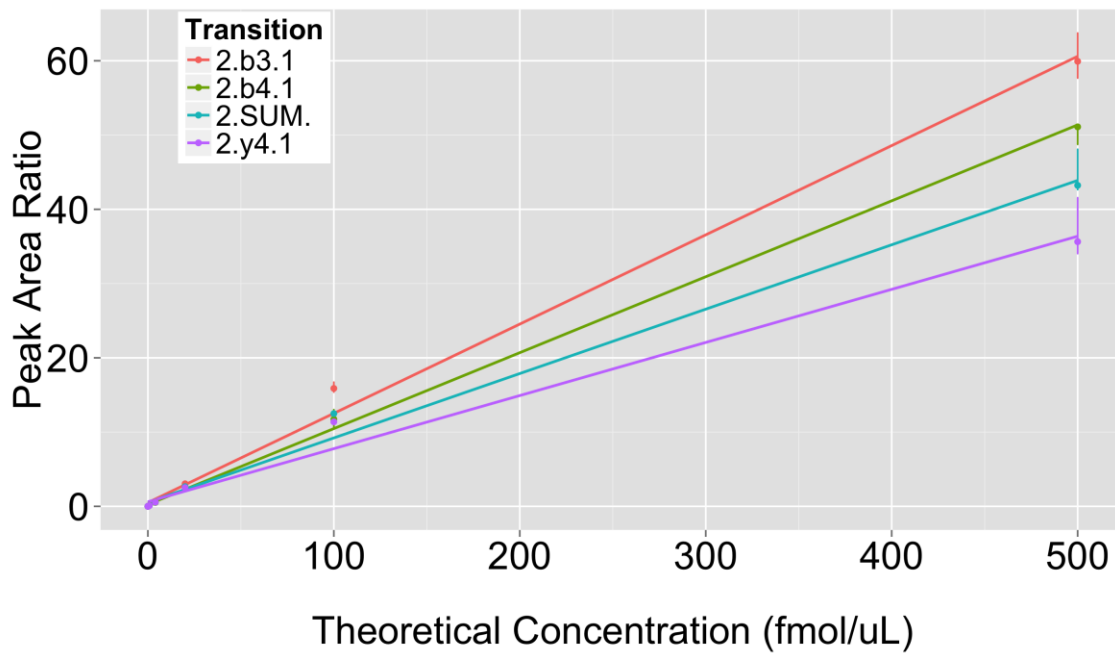
### Analyte: MUC1, 103A.EGTINVHDTVETQFNQYK



### Analyte: MUC1, 103A.EGTINVHDTVETQFNQYK



### Analyte: MUC1, 103b.NYGQLDIFPAR



### Analyte: MUC1, 103b.NYGQLDIFPAR

