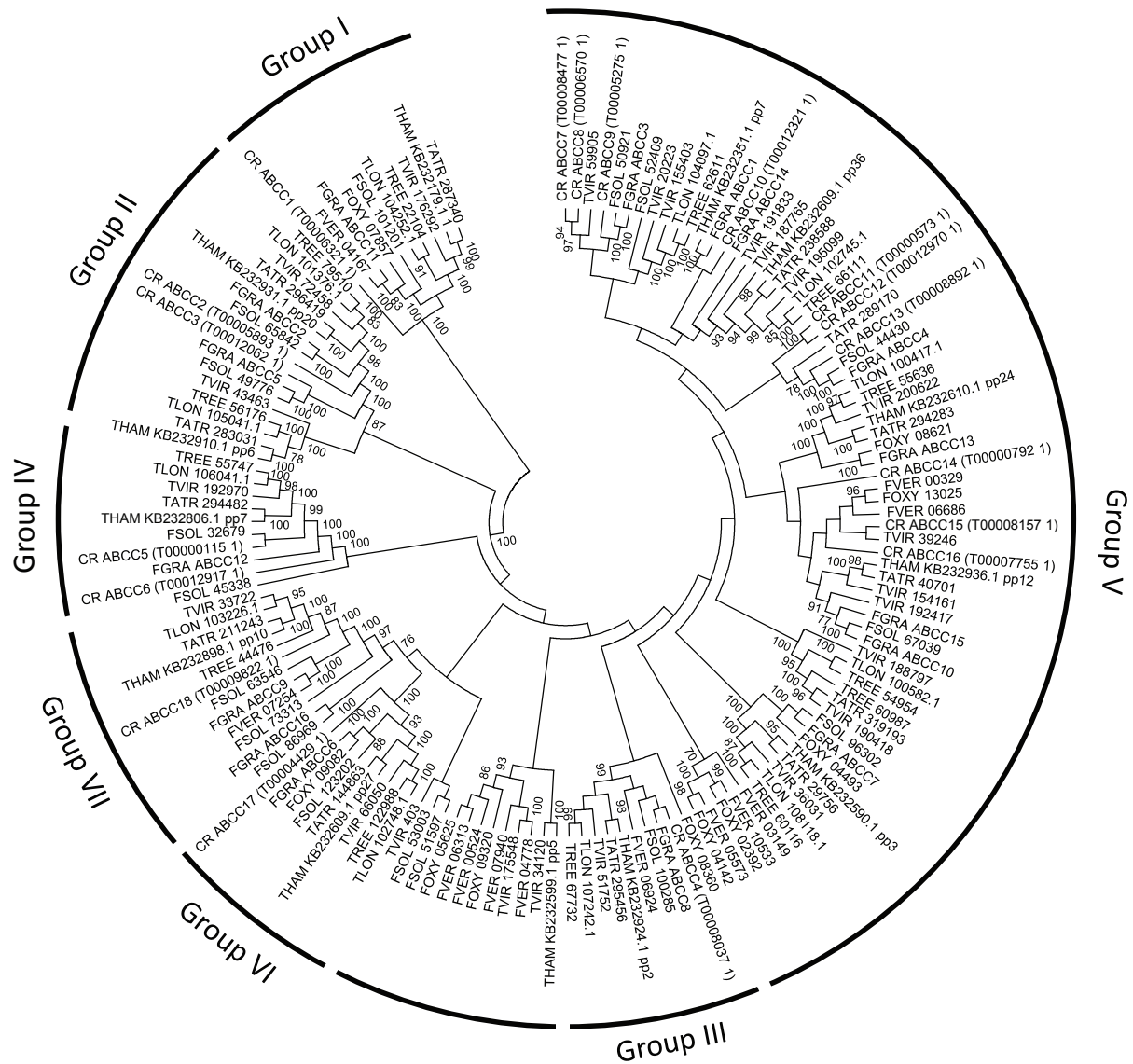


Supplementary file S8:
Phylogenetic relationships of ABC transporter subgroup C among Hypocreales



Supplementary file S8:
Phylogenetic relationships of ABC transporter subgroup C among Hypocreales. Predicted amino acid sequences of ABC transporters were aligned by Clustal W and used to construct a phylogenetic tree using the Neighbour-Joining method. ABC C subgroups were designated according to Kovalchuk and Driessen (Kovalchuk and Driessen 2010). Analysis was performed with the MEGA6 software package. Bootstrap support ($\geq 70\%$) values are associated with nodes. Abbreviations: *C. rosea* = CR, *F. graminearum* = FGRA, *F. oxysporum* f. sp. *lycopersici* = FOXY, *F. solani* = FSOL, *F. verticillioides* = FVER, *T. atroviride* = TATR, *T. hamatum* = THAM, *T. longibrachiatum* = TLON, *T. reesei* = TREE, *T. virens* = TVIR.

Reference

Kovalchuk A, Driessen AJM. 2010. Phylogenetic analysis of fungal ABC transporters. BMC Genomics. 11:177.