

Fig. S1. Correlation of peripheral LPS levels and plasma LBP with MT. (a) The levels of the LPS and LBP were correlated in infected monkeys ($n=20$). (b, c) Comparison of the level of (b) LPS and (c) LBP in naïve, MT^{low} and MT^{high} groups.

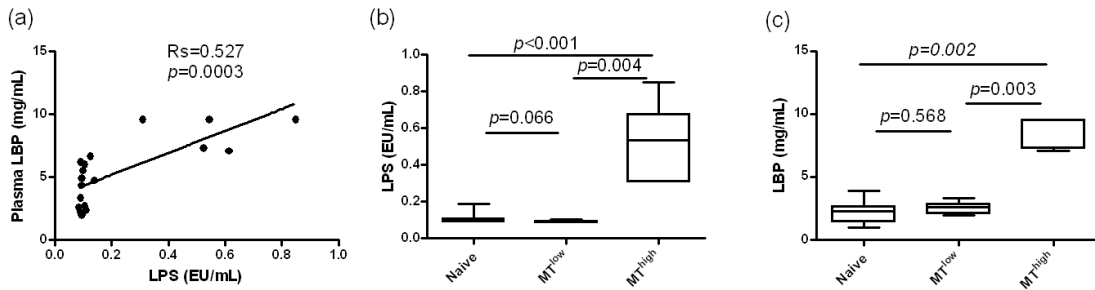


Fig. S2. Schematic representation of the gating strategy used to identify (a) lymphocytes, (b) NK cells, and (c) NKp44⁺ NK cells among mononuclear cells in PBMCs from experimental monkeys.

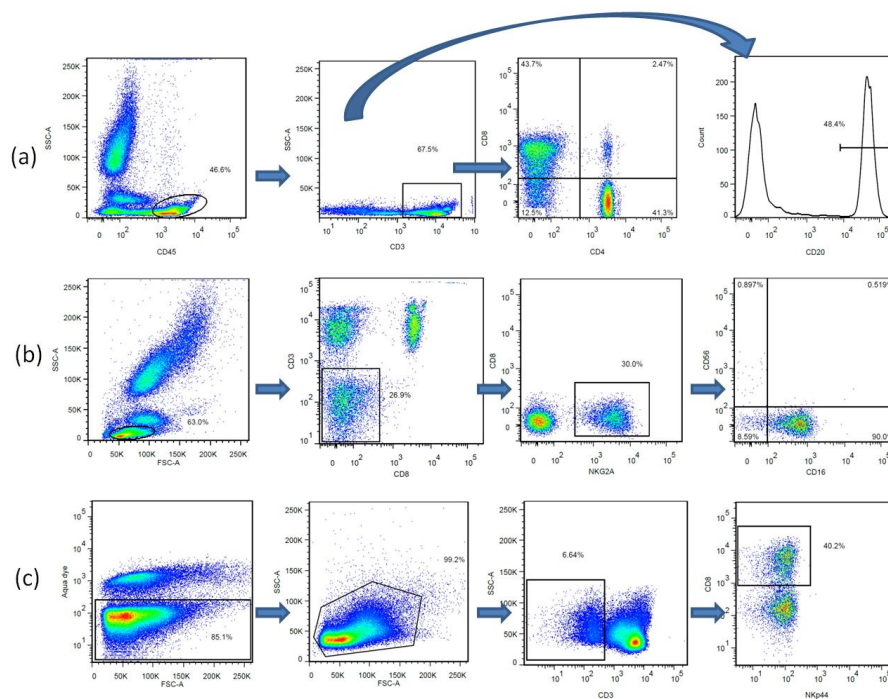


Fig. S3. Status of infection, plasma viral loads, and CD4⁺ T cell numbers in SIVmac239-infected monkeys during study phase II.

