

Additional File 1

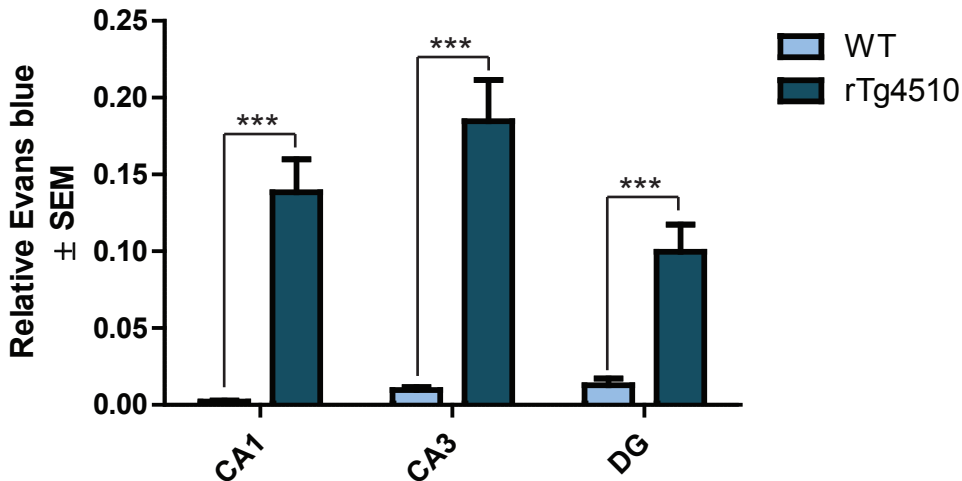


Figure S1 Evans blue fluorescence in subregions of the hippocampus. Quantification of EB fluorescence in the CA1, CA3, and dentate gyrus regions of the hippocampus from 12-month old rTg4510 and wild-type mice. *** $p < 0.001$.

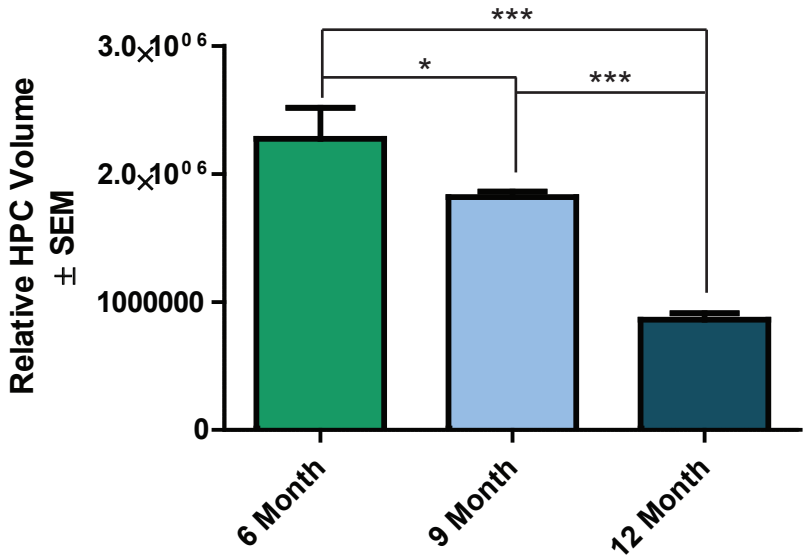


Figure S2 Hippocampal atrophy with aging in the rTg4510 mouse model. Quantification of relative hippocampal volume at 6-, 9- and 12-months. * $p < 0.05$, *** $p < 0.001$.

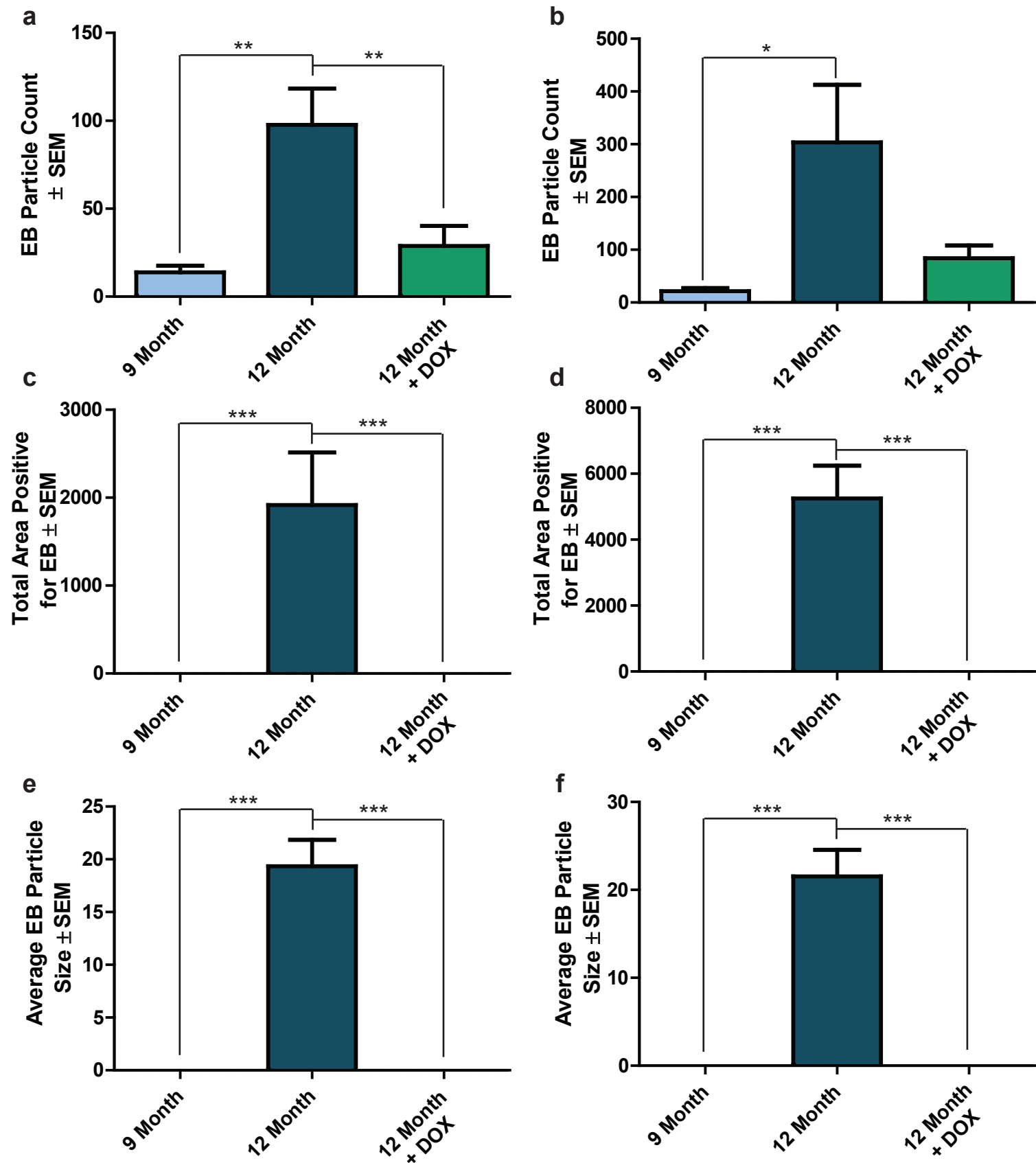


Figure S3 Additional Evans blue (EB) measurements. Average count of independent EB positive spots per **a** hippocampus and **b** frontal cortex. *p<0.05, **p<0.01. Total EB positivity (pixels) in each **c** hippocampus and **d** frontal cortex. ***p<0.001. Average size of independent EB positive areas per **e** hippocampus and **f** frontal cortex. ***p<0.001.

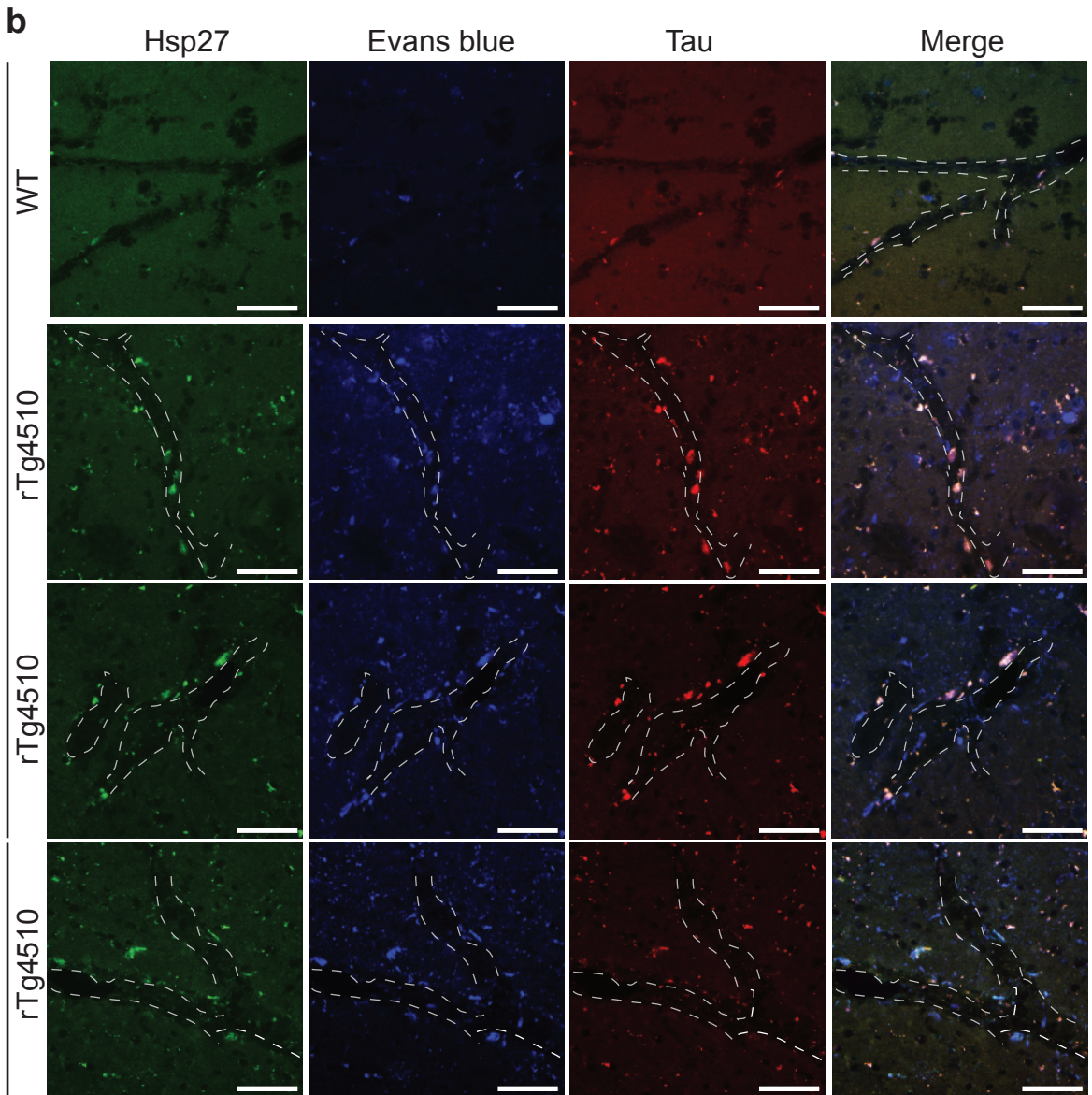
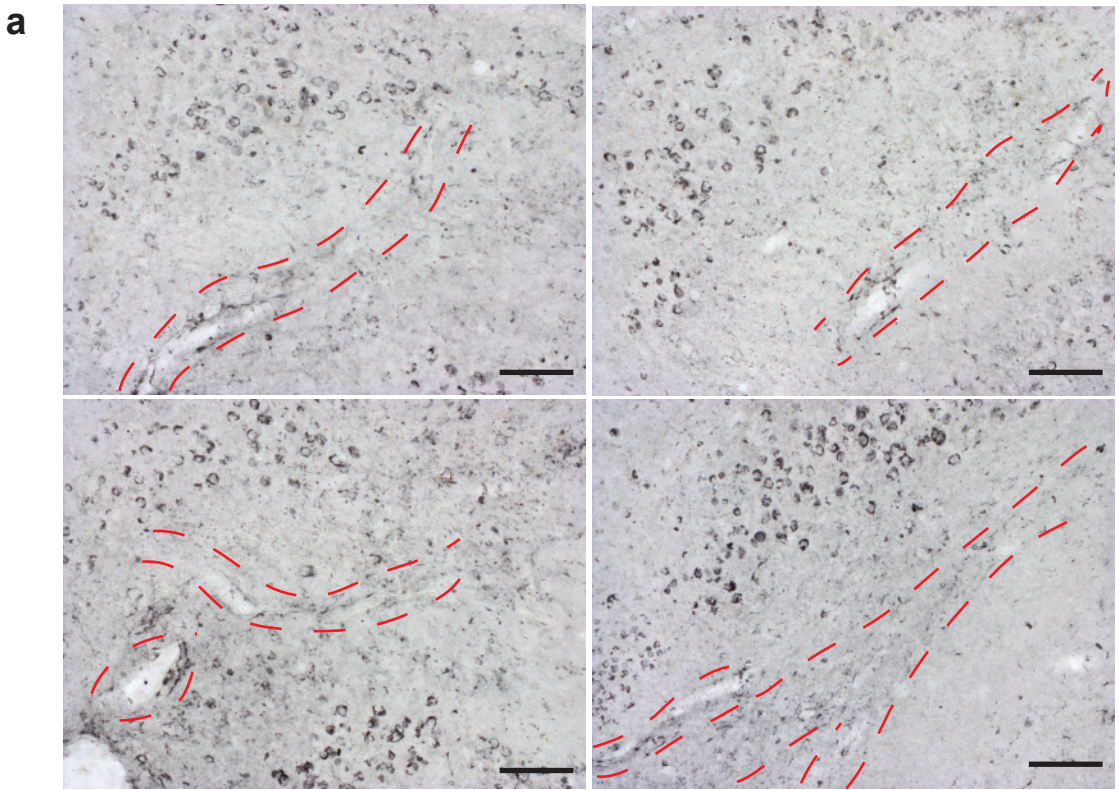


Figure S4 Perivascular tau is found along the hippocampal blood vessels.
a Total tau (H-150) reactivity in the hippocampus of 12-month old rTg4510 mice. Images taken at 20x magnification. Scale bar represents 100 μ m. **b** Representative images of hippocampal blood vessels from 12-month old wild-type, rTg4510 and rTg4510 + DOX stained for Hsp27, tau (v-20), and Evans blue. Images taken at 60x magnification. Scale bar represents 50 μ m.