

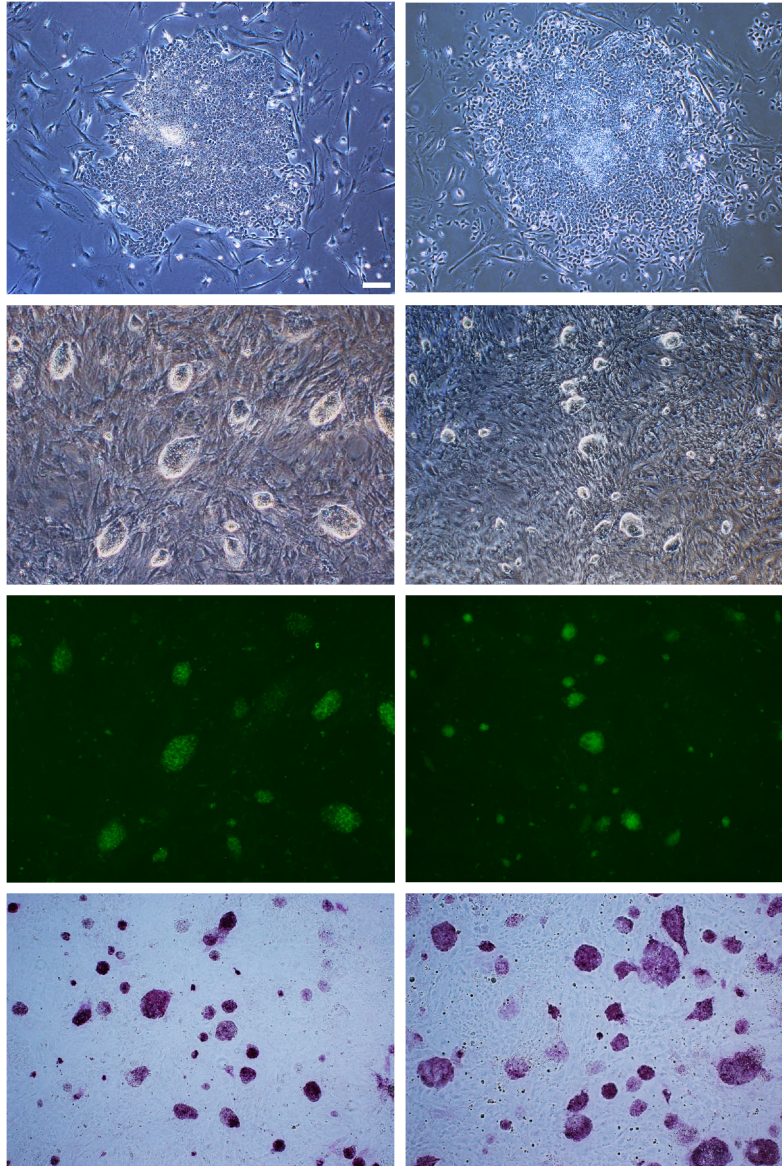
1 **Supplementary figure legends**

2 Supplementary Figure 1. Characterization of naïve-like rdES4 (left panels) and rdES6
3 (right panels) cells. The colony morphology is shown for primed-state rdESCs (top
4 panels), naïve-like converted ESCs (upper middle panels), expressing
5 hOCT3/4-IRES-GFP (lower middle panel) and alkaline phosphatase activity (bottom
6 panels). Scale bar = 200 μm .

7 Supplementary Figure 2. Immunohistochemical detection of oligodendrocytes using an
8 anti-O1 antibody (A) (red) and anti-O1 and anti-CNPase signals merged (B) (orange;
9 arrowheads) before (top panels) and after (bottom panels) naïve-like conversion of rdES4
10 (left panels) and rdES6 (right panels) cells. Mature oligodendrocytes with dendrites
11 (arrows) were derived from naïve-like rdES cells. Scale bar = 100 μm .

12 Supplementary Table 1. Primers used in this study.

13



Supplemental Fig. 1. Honsho *et. al.*

