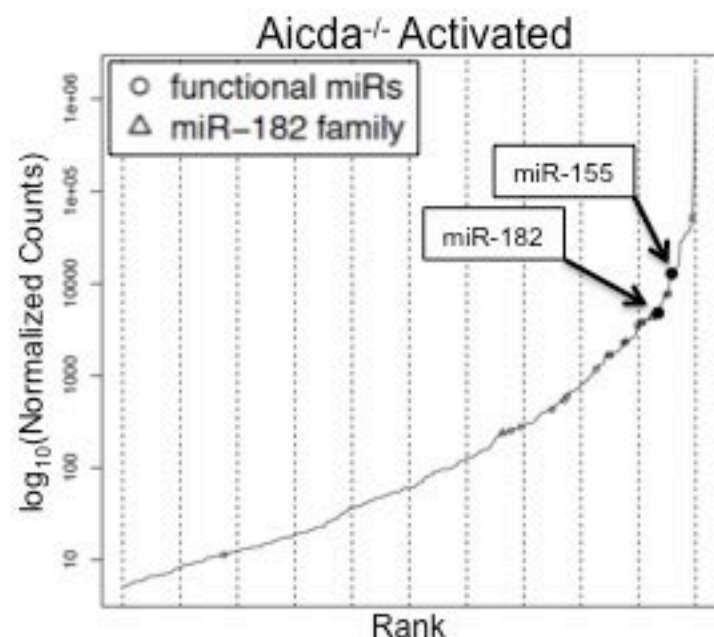


miRNA name	Avg FCR	log2(Avg FCR)	p-value	Avg WT FC	Avg <i>Aicda</i> ^{-/-} FC
mmu-miR-182	2.32	1.21	4.11E-05	90.97	39.28
mmu-miR-467a	2.22	1.15	1.65E-04	19.99	9.00
mmu-miR-98*	2.40	1.26	4.00E-02	12.96	5.41
mmu-miR-155	1.62	0.69	2.44E-02	12.42	7.68
mmu-miR-92b	1.50	0.59	4.11E-05	11.47	7.64
mmu-miR-219-5p	2.28	1.19	4.11E-05	10.35	4.55
mmu-miR-130b	1.64	0.71	4.11E-05	5.72	3.49
mmu-miR-374	3.93	1.97	7.77E-03	3.74	0.95
mmu-miR-148a	2.09	1.07	4.11E-05	3.71	1.77
mmu-miR-17*	1.81	0.85	1.23E-03	2.95	1.64
mmu-miR-15b	1.79	0.84	4.11E-05	2.23	1.24
mmu-miR-221	1.81	0.85	1.88E-02	2.20	1.21
mmu-miR-21	2.14	1.10	4.11E-05	2.01	0.94
mmu-miR-15a	1.57	0.65	4.11E-05	1.25	0.79
mmu-miR-152	1.82	0.86	1.42E-02	1.17	0.65
mmu-miR-195	2.89	1.53	4.11E-05	1.14	0.39
mmu-miR-16	1.66	0.73	4.11E-05	1.13	0.68
mmu-miR-7a	2.03	1.02	1.42E-02	1.05	0.52
mmu-miR-23a	1.84	0.88	8.23E-05	0.76	0.41
mmu-miR-328	0.66	-0.59	4.11E-05	0.67	1.01
mmu-miR-200c	1.61	0.69	7.82E-04	0.58	0.36
mmu-miR-340-3p	1.53	0.61	1.06E-02	0.43	0.28
mmu-miR-1981*	0.64	-0.63	7.77E-03	0.43	0.67
mmu-miR-146a*	0.63	-0.67	7.82E-04	0.41	0.65
mmu-miR-200b	2.38	1.25	1.65E-04	0.38	0.16
mmu-miR-330	0.52	-0.95	8.23E-05	0.37	0.72
mmu-miR-141	1.78	0.83	4.00E-02	0.27	0.15
mmu-miR-26b	1.56	0.64	7.82E-04	0.22	0.14
mmu-miR--3107;486	1.76	0.82	1.88E-02	0.11	0.06

FC = Activated/Resting
FCR = (WT FC)/(*Aicda*^{-/-} FC)

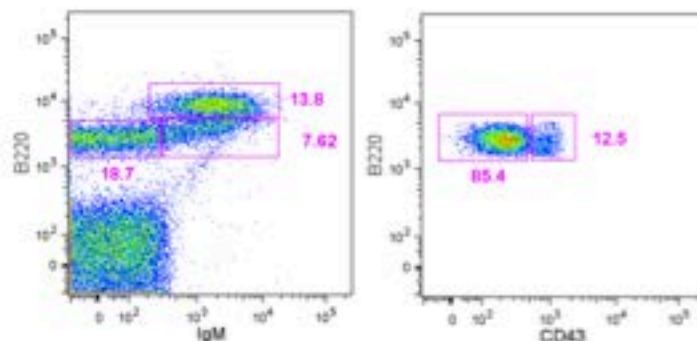


Functional miRs

mmu-miR-16	mmu-miR-17
mmu-miR-181a	mmu-miR-210
mmu-miR-92a	mmu-miR-19a
mmu-miR-93	mmu-miR-15a
mmu-miR-92b	mmu-miR-181b
mmu-miR-150	mmu-miR-18a
mmu-miR-19b	mmu-miR-29b
mmu-miR-29a	mmu-miR-125b-5p
mmu-miR-20a	

Figure S1. Small RNA sequencing top candidates, *Aicda*^{-/-} waterfall plot, and “functional miRs”.

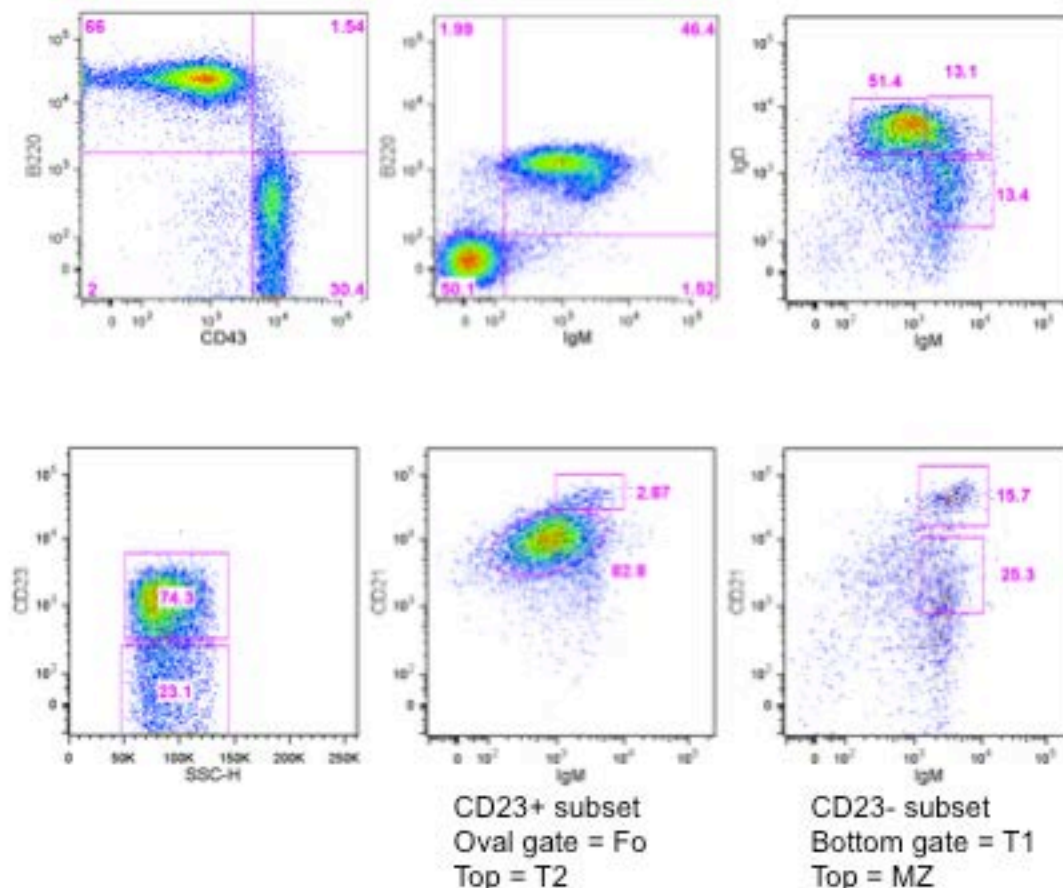
Bone Marrow



Left plot:
Left gate = Pro/Pre
Bottom right = Immature
Top right = Recirculating

Right plot:
Left gate = Pre
Right = Pro

Spleen



Top left gate = Mature
Top right = IgD^{hi} IgM^{hi}
Bottom right = Immature

CD23+ subset
Oval gate = Fo
Top = T2

CD23- subset
Bottom gate = T1
Top = MZ

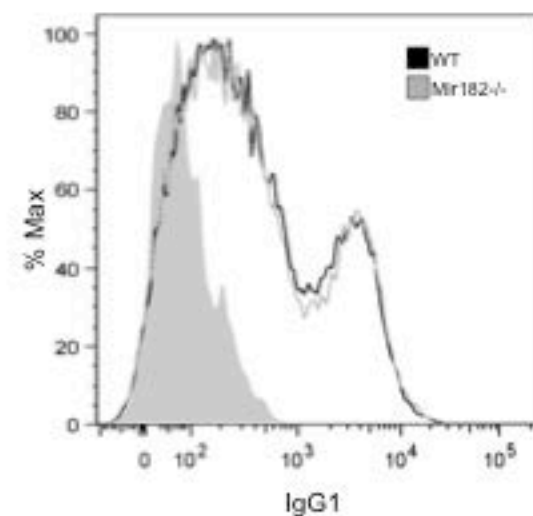
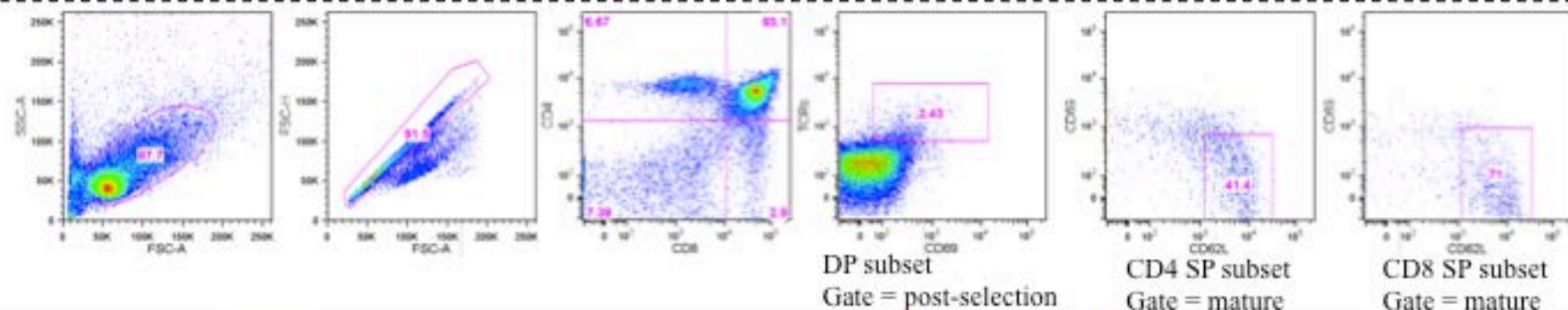
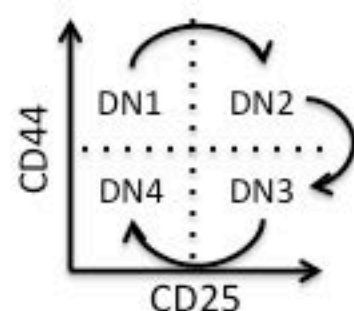
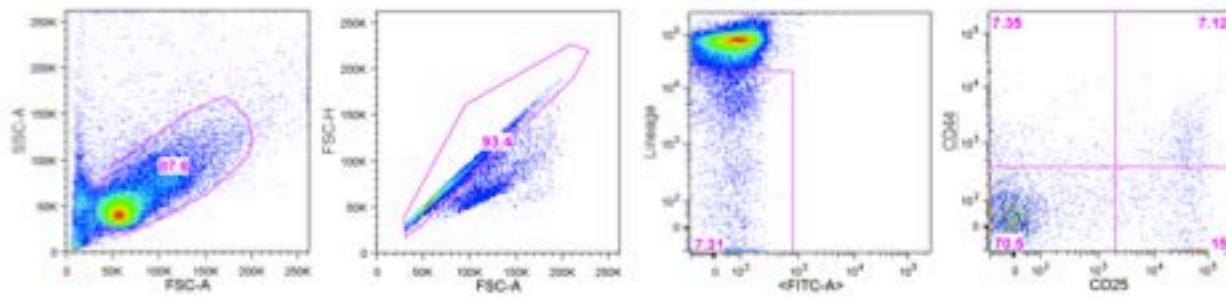
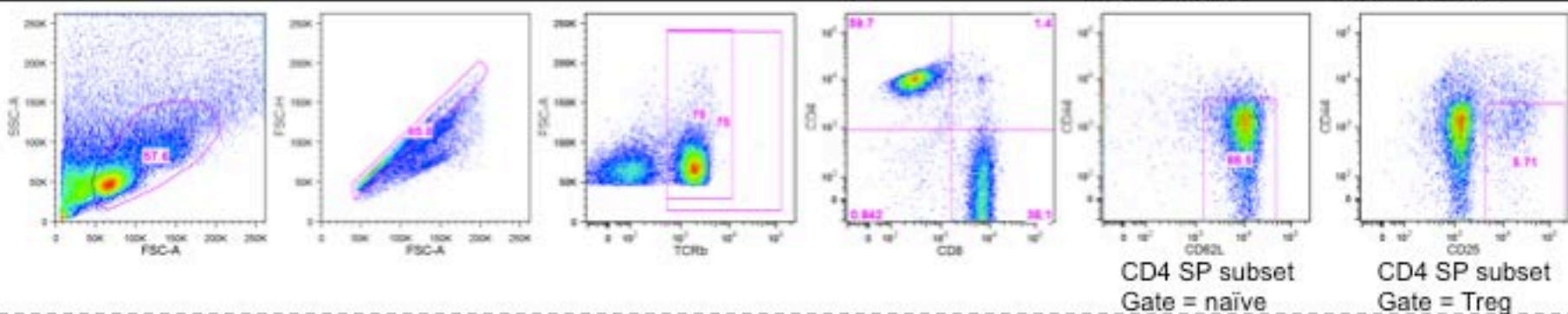


Figure S2. Representative flow cytometry plots of B cell development. *Mir182*^{-/-} sample 1 is shown. Histogram overlay shows CSR efficiency in *ex vivo* activated B cells at 72 hr. Filled grey histogram is unstained sample. (Corresponds to **Figure 2**).

Thymus



LN



Spleen

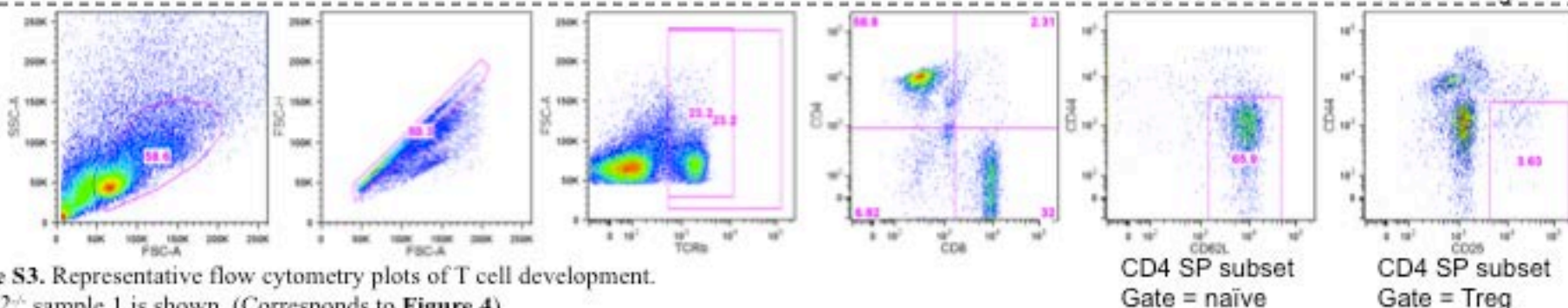


Figure S3. Representative flow cytometry plots of T cell development. *Mir182*^{-/-} sample 1 is shown. (Corresponds to **Figure 4**).

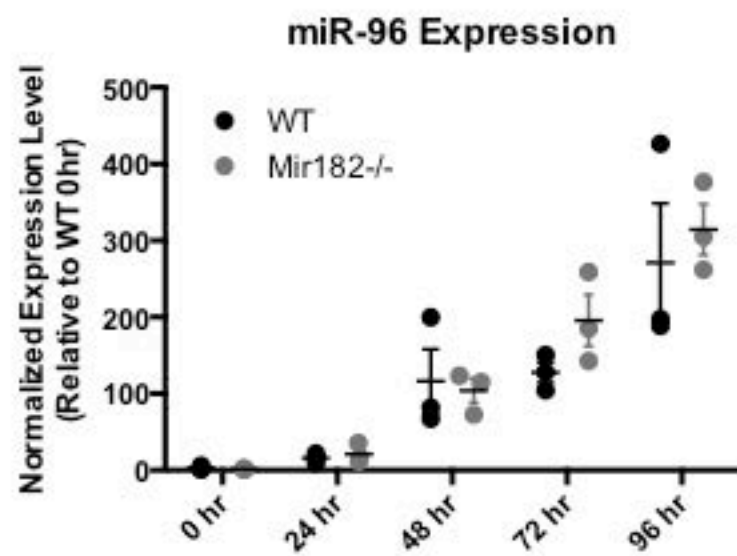
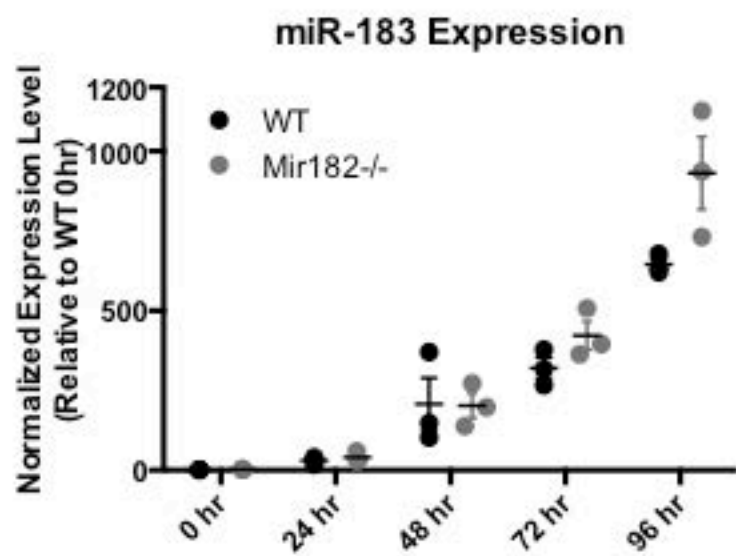


Figure S4. Expression of miR-182 family members miR-183 and miR-96.